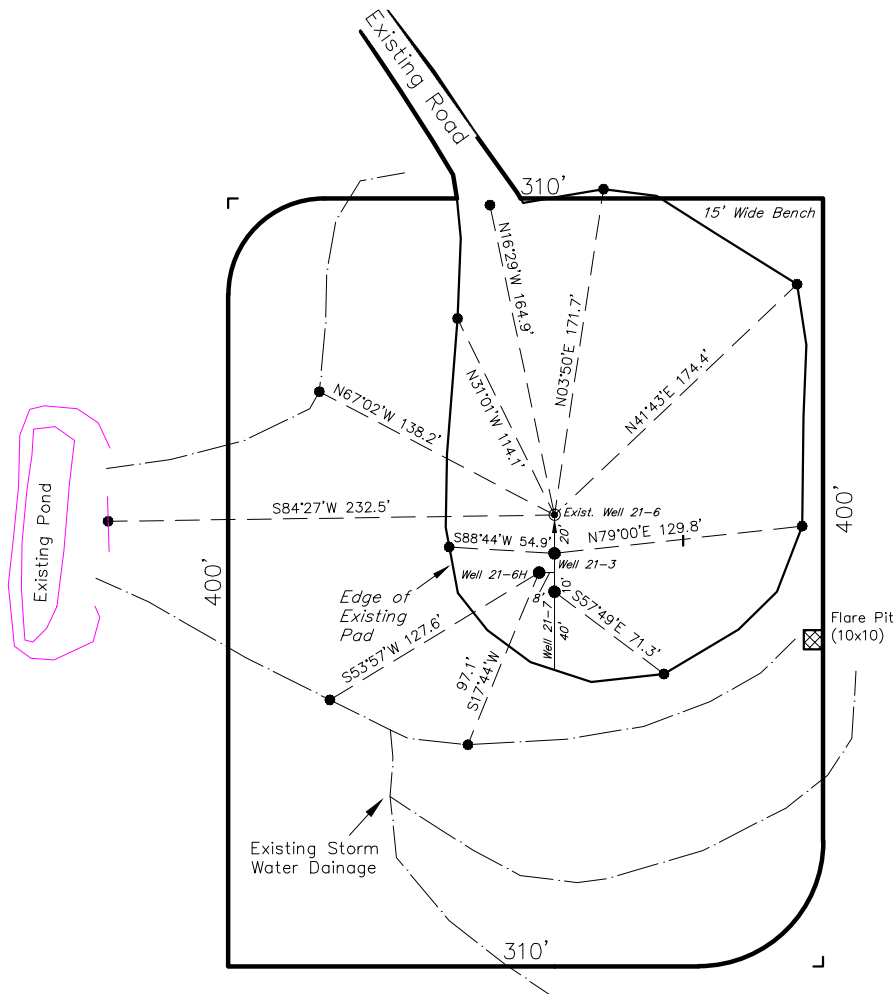


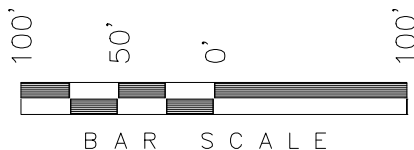
ENCANA OIL & GAS (USA) INC**ADDENDUM TO LEGAL PLATS FOR
WELL PAD (F210U)**

Section 21, T8S, R96W, 6th P.M.

The Nearest Building, Public Road,
Above Ground Utility or Railroad
is 2630' NWLY.



Note:
Flare pit is to be
located at least
100' from well head.



SURFACE USE NOTE:
Surface use of the well site is
grazing. Vegetation consists mainly
of Cedar Trees & Sagebrush.

SURVEYED BY: C.D.S.	DATE SURVEYED: 10-20-08
DRAWN BY: F.T.M.	DATE DRAWN: 10-24-08
SCALE: 1" = 60'	REVISED: J.A.S. 11-20-09

Tri State
Land Surveying, Inc.
180 NORTH VERNAL AVE. VERNAL, UTAH 84078

(435) 781-2501

SHEET
2d
OF 11

ENCANA OIL & GAS (USA) INC

WELL PAD INTERFERENCE PLAT

WELL PAD (F210U)

Section 21, T8S, R96W, 6th P.M.

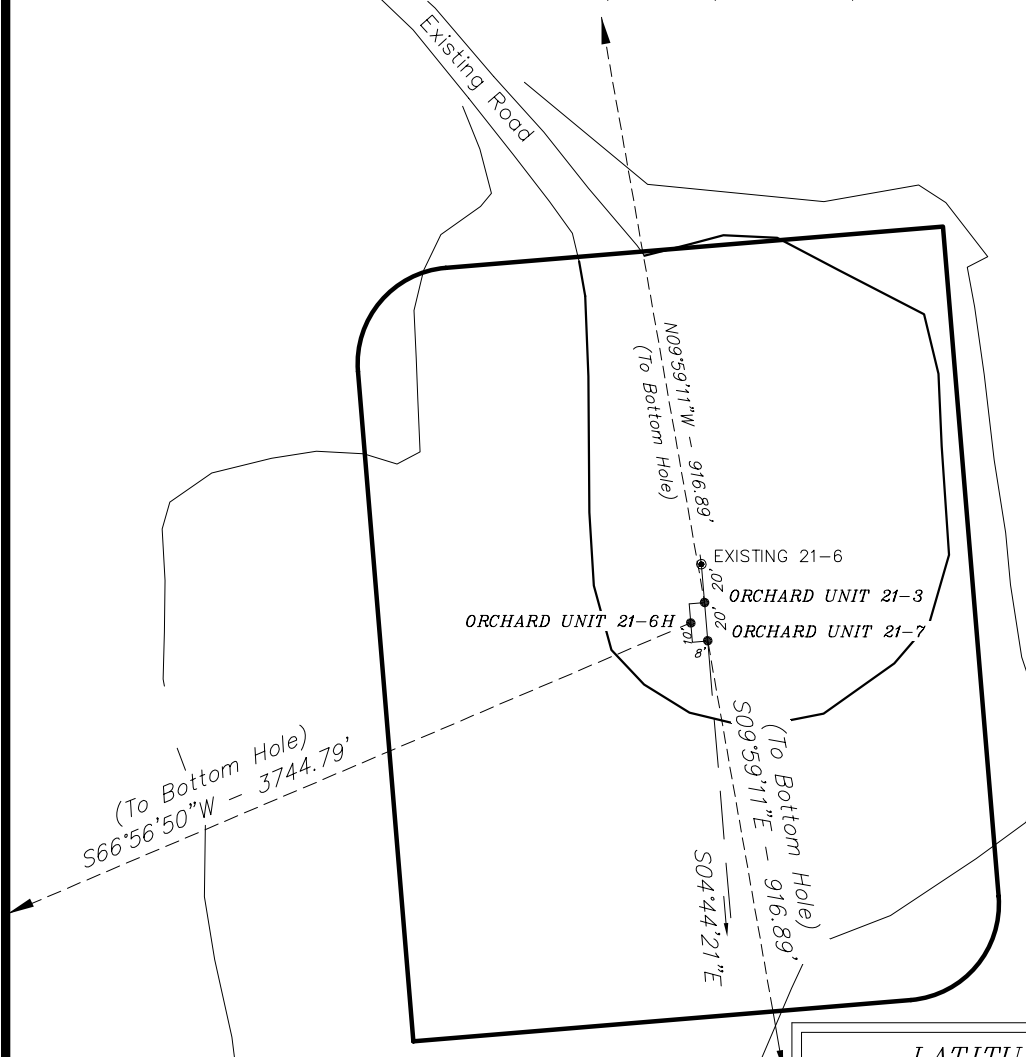


TOP HOLE FOOTAGES

ORCHARD UNIT 21-3 (F210U)
1687' FNL & 1729' FWL

ORCHARD UNIT 21-6H (F210U)
1697' FNL & 1722' FWL

ORCHARD UNIT 21-7 (F210U)
1706' FNL & 1730' FWL



BOTTOM HOLE FOOTAGES

ORCHARD UNIT 21-3 (F210U)
781' FNL & 1576' FWL

ORCHARD UNIT 21-6H (F210U)
2042' FSL & 1736' FEL

ORCHARD UNIT 21-7 (F210U)
2612' FNL & 1883' FWL

LATITUDE & LONGITUDE Top of Hole position (NAD 83)

WELL	LATITUDE	LONGITUDE
21-3	39° 20' 15.35"	108° 07' 01.01"
21-6H	39° 20' 15.25"	108° 07' 01.10"
21-7	39° 20' 15.16"	108° 07' 00.99"
EXIST 21-6	39° 20' 15.55"	108° 07' 01.03"

RELATIVE COORDINATES From top hole to bottom hole

WELL	NORTH	EAST
21-3	903'	-159'
21-6H	-1,466'	-3,446'
21-7	-903'	159'

Note:

Bearings are based on G.P.S. observations.

LATITUDE & LONGITUDE Bottom of Hole position (NAD 83)

WELL	LATITUDE	LONGITUDE
21-3	39° 20' 24.28"	108° 07' 03.03"
21-6H	39° 20' 00.76"	108° 07' 44.94"
21-7	39° 20' 06.23"	108° 06' 58.97"

SURVEYED BY: C.D.S.	DATE SURVEYED: 10-20-80
DRAWN BY: F.T.M.	DATE DRAWN: 10-24-08
SCALE: 1" = 60'	REVISED: M.W. 05-28-09

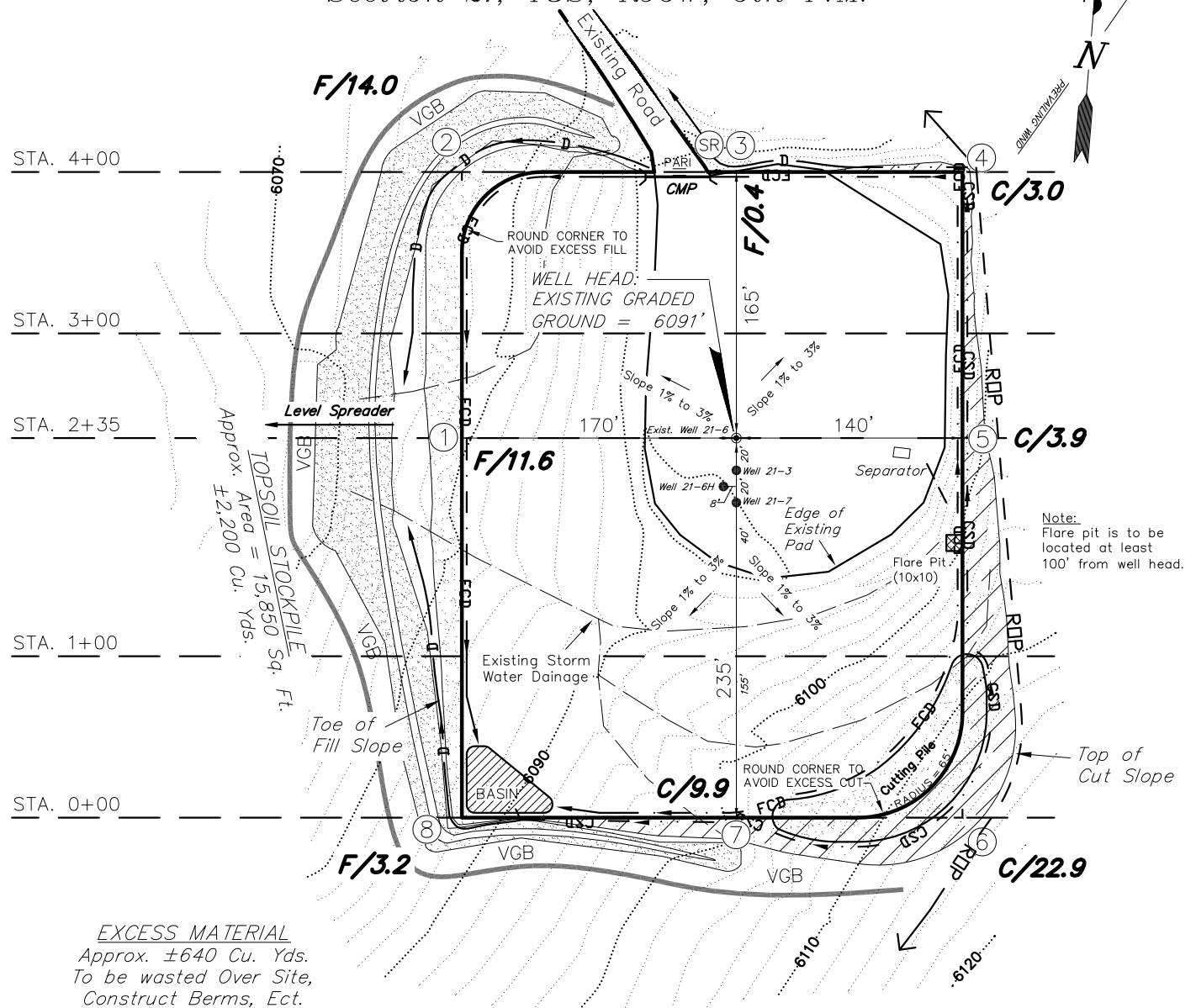
Tri State
Land Surveying, Inc.
180 NORTH VERNAL AVE. VERNAL, UTAH 84078
(435) 781-2501

SHEET
3
OF 11

ENCANA OIL & GAS (USA) INC

WELL PAD (F210U)

Section 21, T8S, R96W, 6th P.M.



NOTES:

- (1) Slope Track and/or Terrace All Slopes and Piles
- (2) Erosion Control & Seed Topsoil Stockpile
- (3) Erosion Control & Seed Outside Slopes of Stockpiles
- (4) Slope away from Substructure Areas 1% to 3% to Flow Control Ditch on Entire Pad
- (5) When Possible the Cut and Fill Slopes Directly Behind the Proposed Production Equipment Should be Reclaimed with 3:1 Slopes and Topsoil Spread During Pad Construction.
- (6) BMP Selection and Position may Change Depending on Actual Conditions Encountered During the Construction Process.
- (7) All CMP's Shall have Inlet and Outlet Protection.
- (8) All BMP's to be constructed to Encana Oil & Gas (USA) Inc. BMP Manual's Specifications

NOTE:

The topsoil & waste material area is calculated as being mounds containing 2,200 cubic yards of dirt (a 15% fluff factor is included). The mound areas are calculated with push slopes of 2.5:1 & fall slopes of 2.5:1.

LEGEND:

PARI = PAD/ACCESS ROAD INTERFACE
 SR = SEDIMENT RESERVOIR
 ST = SEDIMENT TRAP
 R.O.P. = RUN-ON PROTECTION
 CSD = CUT SLOPE DIVERSION (BERM TOE OF CUT SLOPE)
 FCD = FILL DIVERSION TO SEDIMENT TRAP
 VGB = VEGETATION BUFFER (UNDISTURBED LAND INSIDE PC)
 CDM = CHECK DAM

SURVEYED BY: C.D.S.	DATE SURVEYED: 10-20-08
DRAWN BY: F.T.M.	DATE DRAWN: 10-24-08
SCALE: 1" = 60'	REVISED: J.A.S. 11-20-09

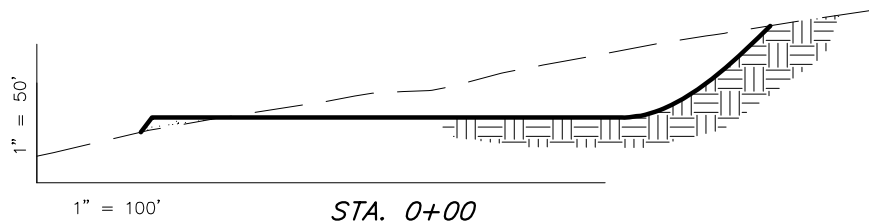
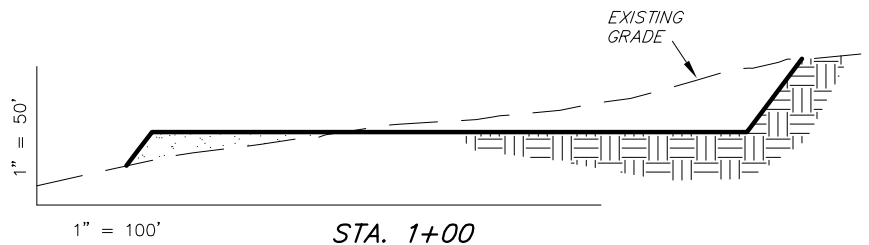
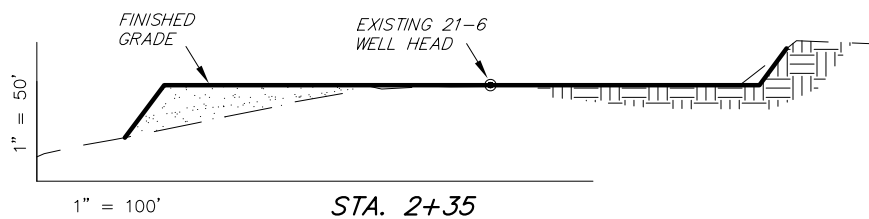
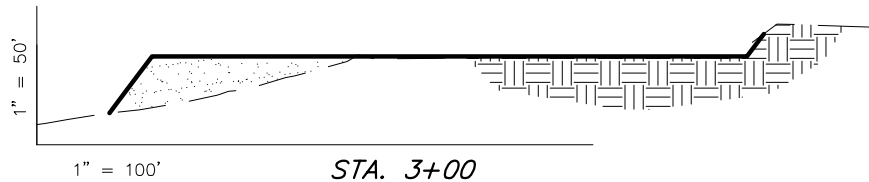
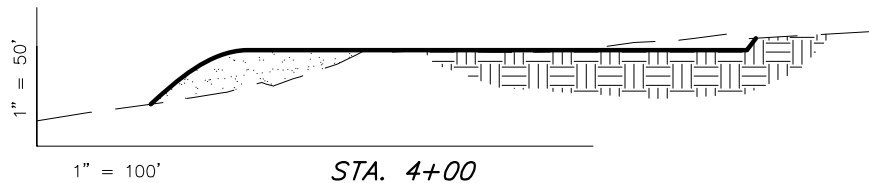
Tri State
 Land Surveying, Inc.
 180 NORTH VERNAL AVE. VERNAL, UTAH 84078
 (435) 781-2501

SHEET
 4
 OF 11

ENCANA OIL & GAS (USA) INC

WELL PAD (F210U)

Section 21, T8S, R96W, 6th P.M.



NOTE:
UNLESS OTHERWISE NOTED
CUT SLOPES ARE AT 1:1
FILL SLOPES ARE AT 1.5:1

ESTIMATED EARTHWORK QUANTITIES (No Shrink or swell adjustments have been used) (Expressed in Cubic Yards)

ITEM	CUT	FILL	EXCESS	FRAC PIT	6" TOPSOIL
PAD	11,230	10,670	560	Frac Pit is not included in Pad Cut	Topsoil is not included in Pad Cut
TOTALS	11,230	10,670	560	4,690	1,920

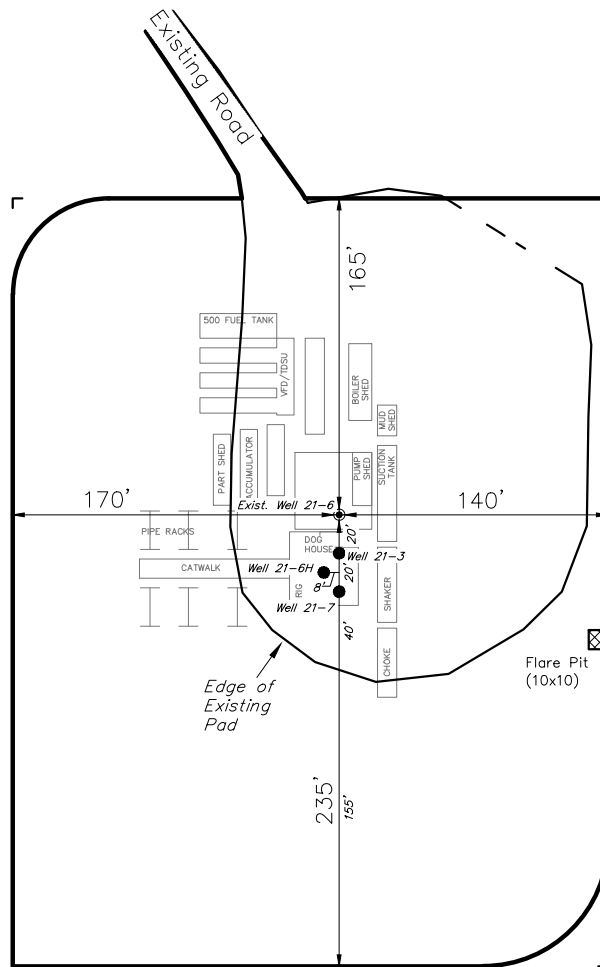
SURVEYED BY: C.D.S. DATE SURVEYED: 10-20-08
DRAWN BY: F.T.M. DATE DRAWN: 10-24-08
SCALE: 1" = 60' REVISED: M.W. 05-28-09

Tri State
Land Surveying, Inc.
180 NORTH VERNAL AVE. VERNAL, UTAH 84078
(435) 781-2501

SHEET
5
OF 11

ENCANA OIL & GAS (USA) INC

TYPICAL RIG LAYOUT WELL PAD (F210U)



Note:
Flare pit is to be
located at least
100' from well head.

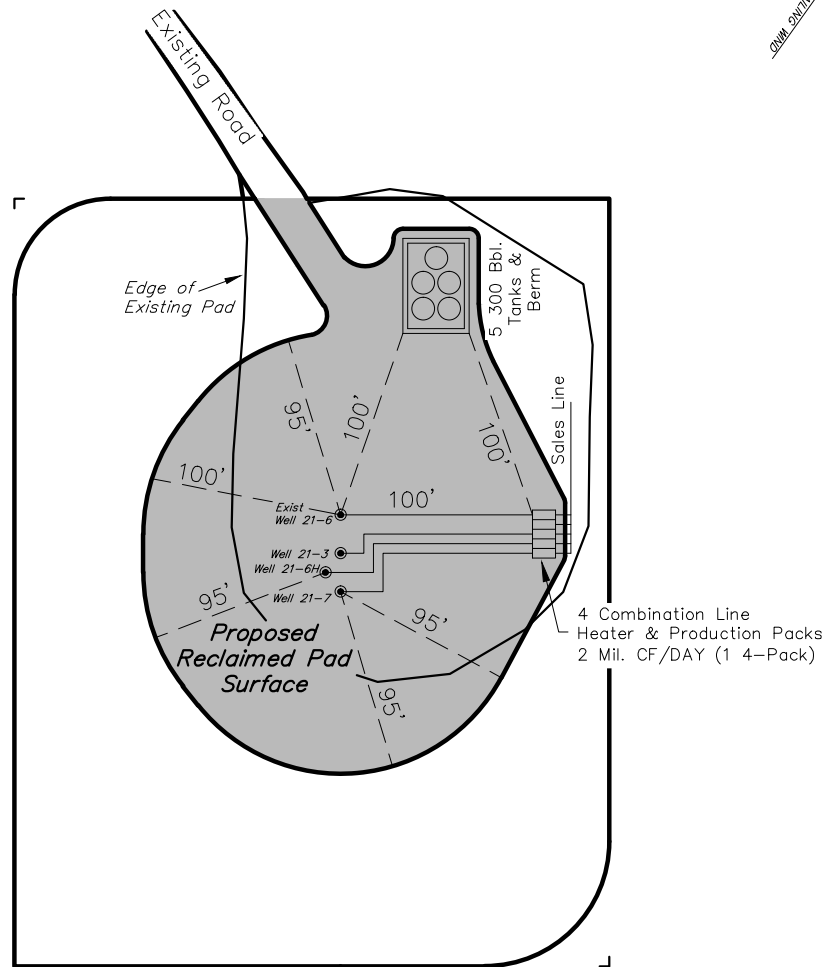
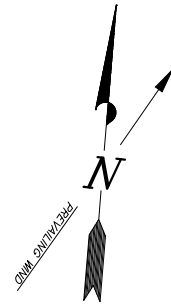
SURVEYED BY: C.D.S.	DATE SURVEYED: 10-20-08
DRAWN BY: F.T.M.	DATE DRAWN: 10-24-08
SCALE: 1" = 60'	REVISED: J.A.S. 11-20-09

Tri State
Land Surveying, Inc.
180 NORTH VERNAL AVE. VERNAL, UTAH 84078
(435) 781-2501

SHEET
6
OF 11

ENCANA OIL & GAS (USA) INC

PRODUCTION SCHEMATIC WELL PAD (F210U)



Area of Proposed
Reclaimed Pad
Surface = 1.02 Acres

Note:
Actual Equipment Layout and
Reclaimed Pad Surface Area
May Change do to Production
Requirements or Site Conditions.

Note:
Reclaimed Pad to have storm
water Management BMP's Per
Encana Oil & Gas (USA) Inc.
BMP Manual.

SURVEYED BY: C.D.S.	DATE SURVEYED: 10-20-08
DRAWN BY: F.T.M.	DATE DRAWN: 10-24-08
SCALE: 1" = 60'	REVISED: J.A.S. 11-20-09

Tri State
Land Surveying, Inc.
(435) 781-2501
180 NORTH VERNAL AVE. VERNAL, UTAH 84078

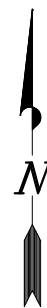
SHEET
7
OF 11

ENCANA OIL & GAS (USA) INC

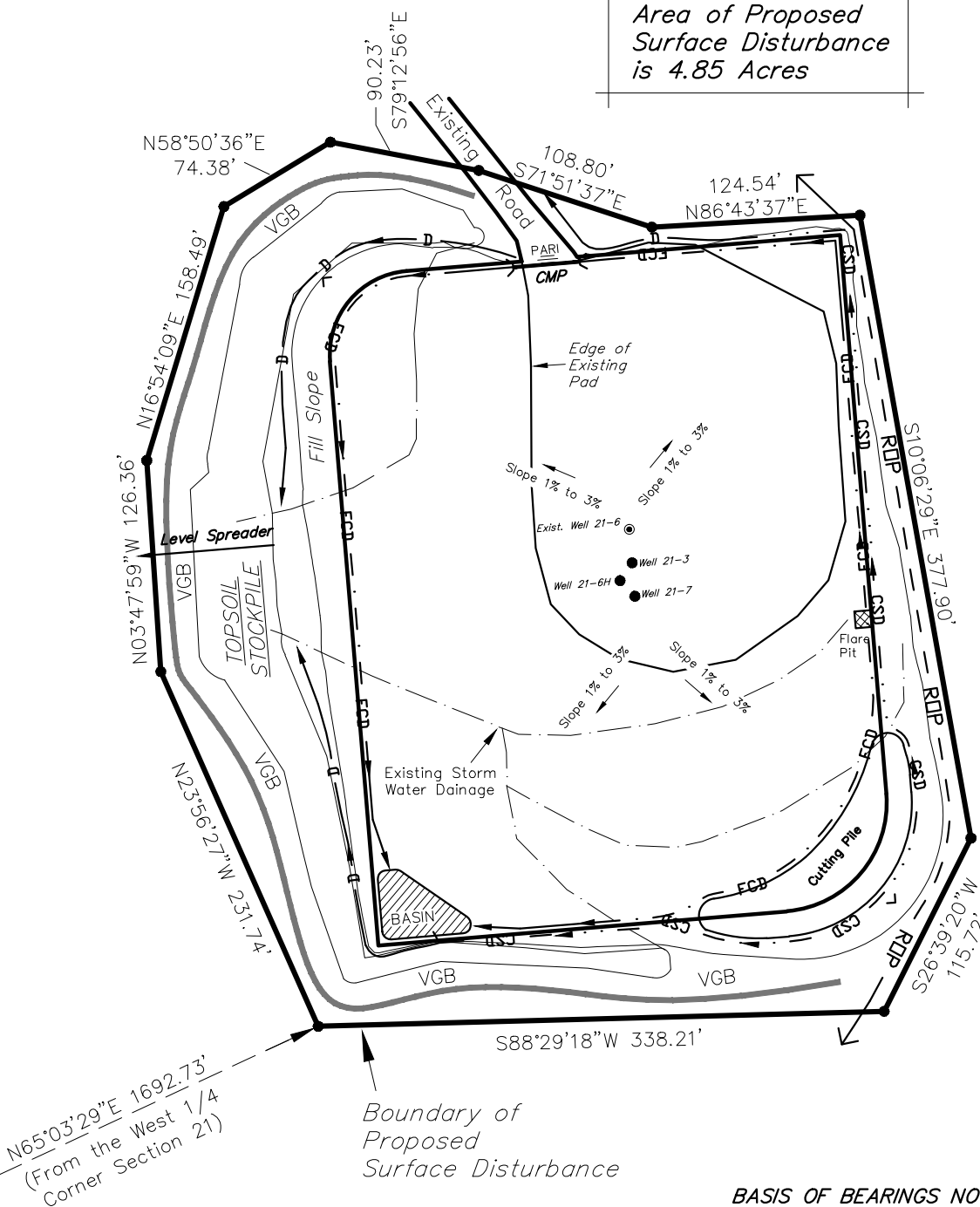
SURFACE DISTURBANCE AREA

WELL PAD (F210U)

Section 21, T8S, R96W, 6th P.M.



Area of Proposed
Surface Disturbance
is 4.85 Acres



BASIS OF BEARINGS NOTE:

Basis of Bearings is the which is taken from Global Positioning Satellite observations to bear N00°22'12"W a measured distance of 2653.21'.

SURVEYED BY: C.D.S.	DATE SURVEYED: 10-20-08
DRAWN BY: F.T.M.	DATE DRAWN: 10-24-08
SCALE: 1" = 100'	REVISED: J.A.S. 11-20-09

Tri State
Land Surveying, Inc.
(435) 781-2501
180 NORTH VERNAL AVE. VERNAL, UTAH 84078

SHEET
8
OF 11