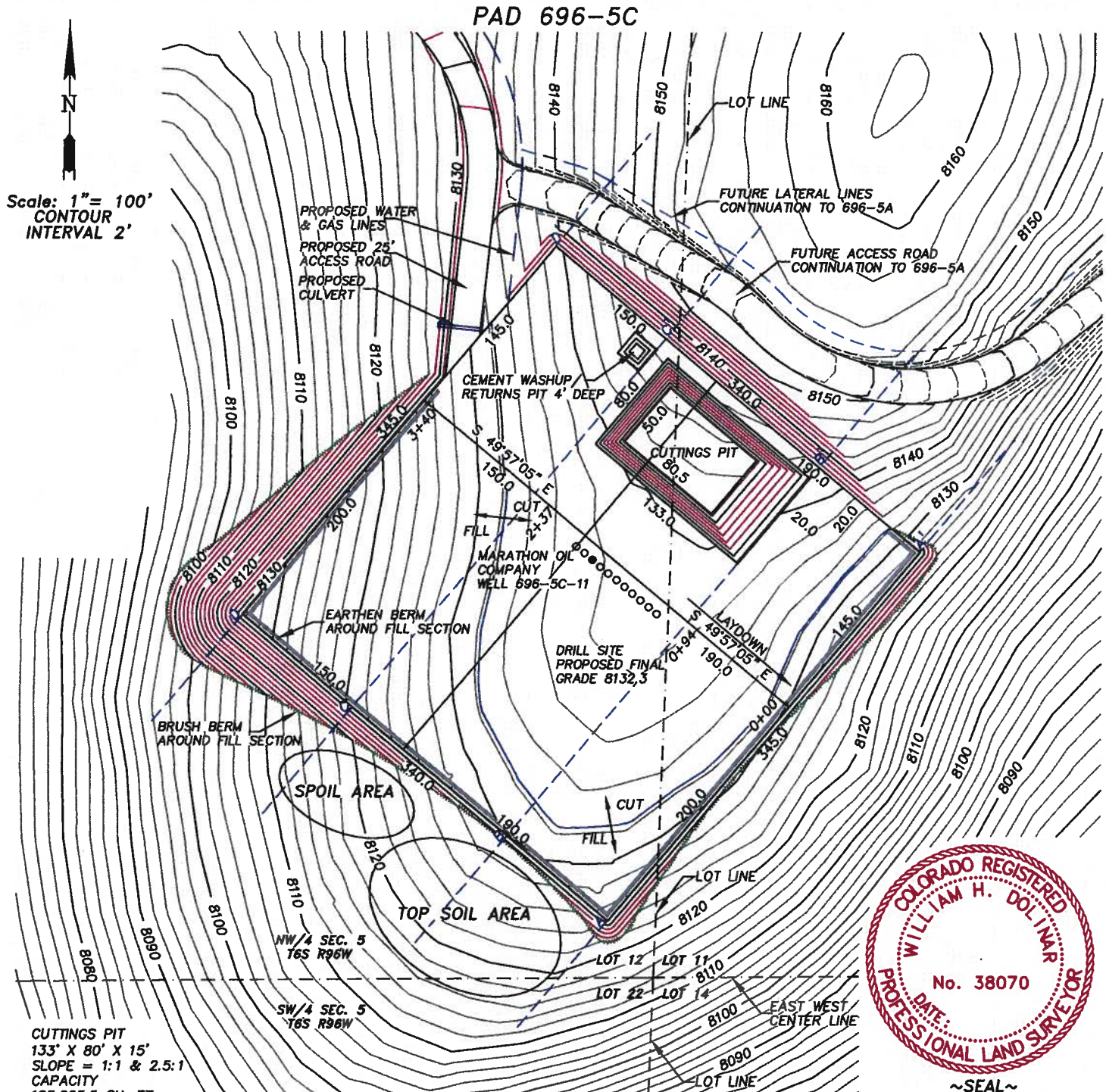


EXHIBIT "C1"

WILLIAM H. SMITH & ASSOCIATES P.C.
SURVEYING CONSULTANTS
MARATHON OIL COMPANY

P.O. BOX 820
GREEN RIVER, WYOMING 82935

550 EAST 2ND NORTH
PH. 307-875-3638
FAX. 307-875-3640



CUTTINGS PIT
133' X 80' X 15'
SLOPE = 1:1 & 2.5:1
CAPACITY
105,965.5 CU. FT.
3,924.7 CU. YDS.

CEMENT WASHUP/RETURNS PIT
20' X 20' X 4'
SLOPE = 1.5:1
CAPACITY
148 BBLs FULL
44 BBLs WORKING CAPACITY
WITH 2' FREE BOARD

JOB NO. 26099
07/31/2009 CED
PAD596-29C/PAD596-29C.DWG

CUT/FILL SLOPES: 1.5:1
QUANTITIES:
TOTAL CUT = 22,399 BANK CUBIC YARDS
TOTAL FILL = 16,973 BANK CUBIC YARDS
TOPSOIL AT 12 INCHES OF DEPTH = 5,280 BANK CUBIC YARDS
SPOIL = 145 BANK CUBIC YARDS
DISTURBED AREA = 142,564 SQ. FT. OR 3.27 ACRES

NOTE: ALL AVAILABLE TOPSOIL WITHIN DISTURBED AREA TO BE STOCKPILED FOR FUTURE RECLAMATION.



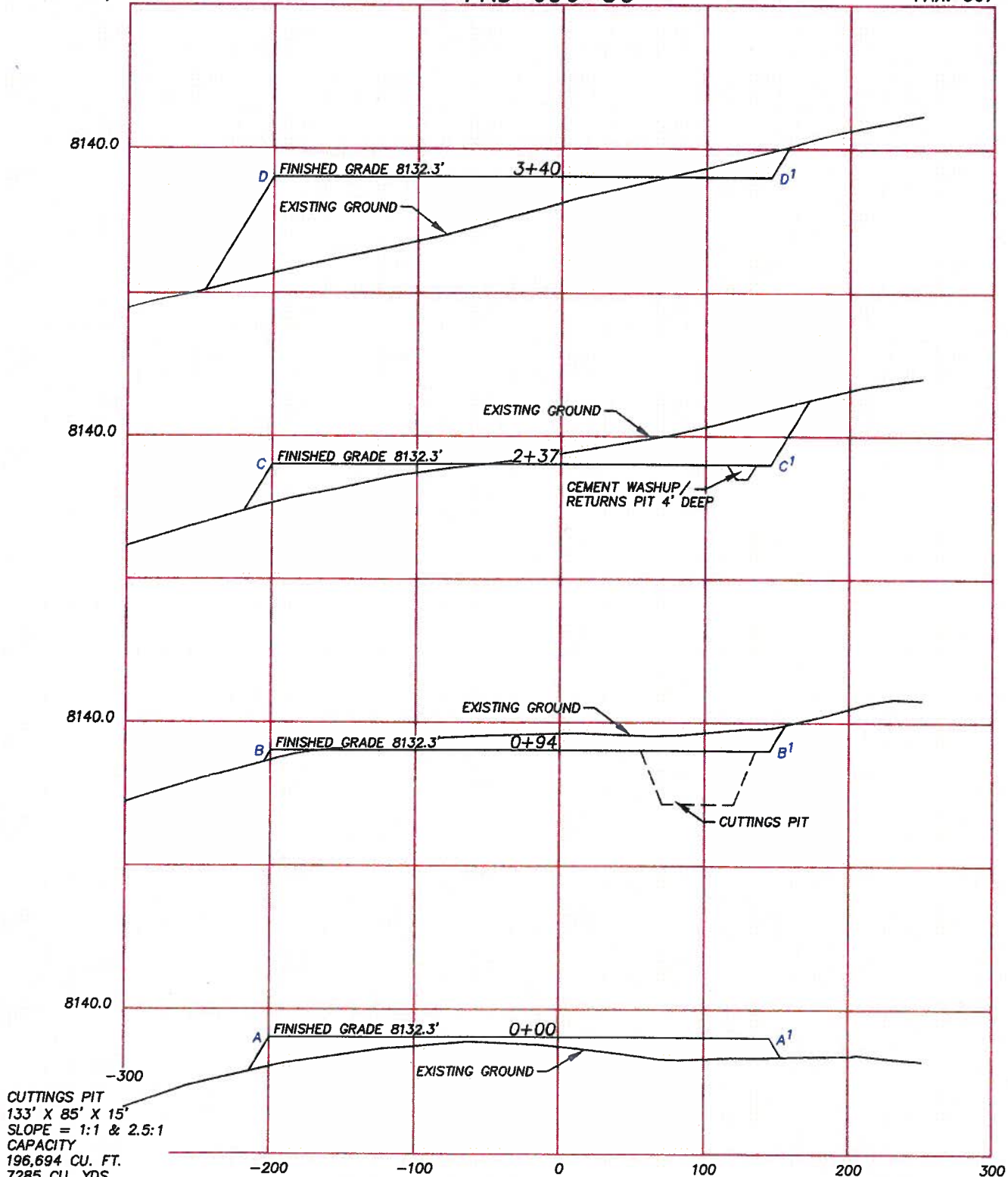
PREPARED FOR:
MARATHON OIL COMPANY
P.O. Box 3128
Houston, TX 77253
5555 San Felipe
Houston, TX 77056

LOCATION:
PAD 696-5C
WITHIN LOTS 11 & 12, SECTION 5,
T6S, R96W, 6TH PM.
GARFIELD COUNTY, COLORADO
SHEET 2 OF 12

WILLIAM H. SMITH & ASSOCIATES P.C.
SURVEYING CONSULTANTS
MARATHON OIL COMPANY
PAD 696-5C

P.O. BOX 820
GREEN RIVER, WYOMING 82935

550 EAST 2ND NORTH
PH. 307-875-3638
FAX. 307-875-3640



CUTTINGS PIT
133' X 85' X 15'
SLOPE = 1:1 & 2.5:1
CAPACITY
196,694 CU. FT.
7285 CU. YDS.

CEMENT WASHUP/RETURNS PIT
20' X 20' X 4'
SLOPE = 1.5:1
CAPACITY
148 BBLs FULL
44 BBLs WORKING CAPACITY
WITH 2' FREE BOARD

JOB NO. 26099
05/26/2009 CED
PAD596-29C/PAD596-29C.DWG

HORIZONTAL SCALE: 1"=100 FEET
VERTICAL SCALE: 1"=40.00 FEET

CUT/FILL SLOPES: 1.5:1
QUANTITIES:
TOTAL CUT = 22,399 BANK CUBIC YARDS
TOTAL FILL = 16,973 BANK CUBIC YARDS
TOPSOIL AT 12 INCHES OF DEPTH = 5,280 BANK CUBIC YARDS
SPOIL = 145 BANK CUBIC YARDS
DISTURBED AREA = 142,564 SQ. FT. OR 3.27 ACRES

NOTE: ALL AVAILABLE TOPSOIL WITHIN DISTURBED AREA TO BE STOCKPILED FOR FUTURE RECLAMATION.

PREPARED FOR:
MARATHON OIL COMPANY
P.O. Box 3128
Houston, TX 77253
5555 San Felipe
Houston, TX 77056

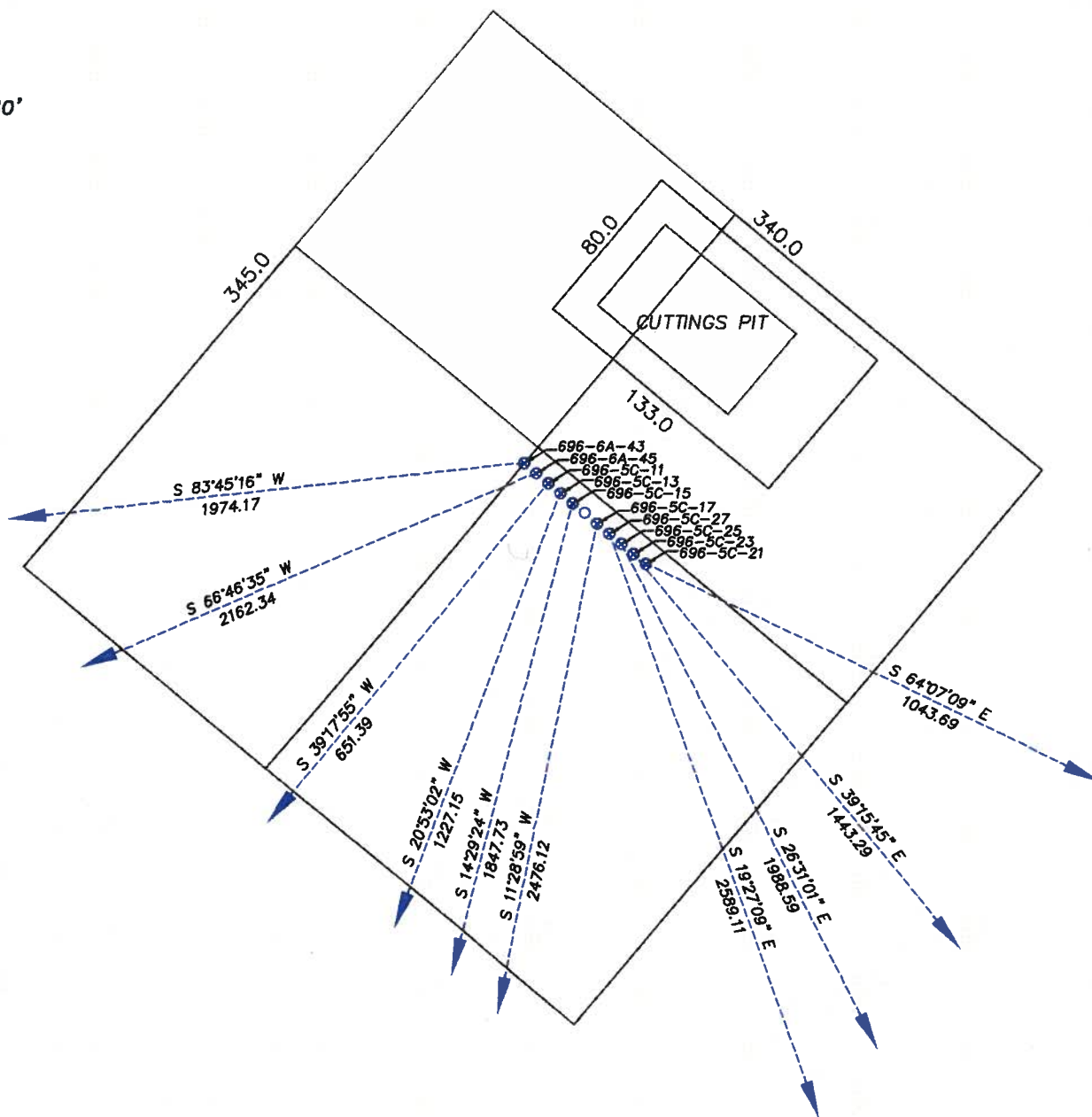
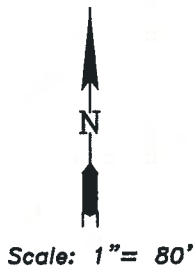
LOCATION:
PAD 696-5C
WITHIN LOTS 11 & 12, SECTION 5,
T6S, R96W, 6TH PM.
GARFIELD COUNTY, COLORADO
SHEET 3 OF 12

EXHIBIT "C3"
WILLIAM H. SMITH & ASSOCIATES P.C.
SURVEYING CONSULTANTS
MARATHON OIL COMPANY

P.O. BOX 820
 GREEN RIVER, WYOMING 82935

550 EAST 2ND NORTH
 PH. 307-875-3638
 FAX. 307-875-3640

PAD 696-5C DIRECTION LAYOUT



RESERVE PIT SIZE
 301' X 85' X 15'
 SLOPE = 2:1

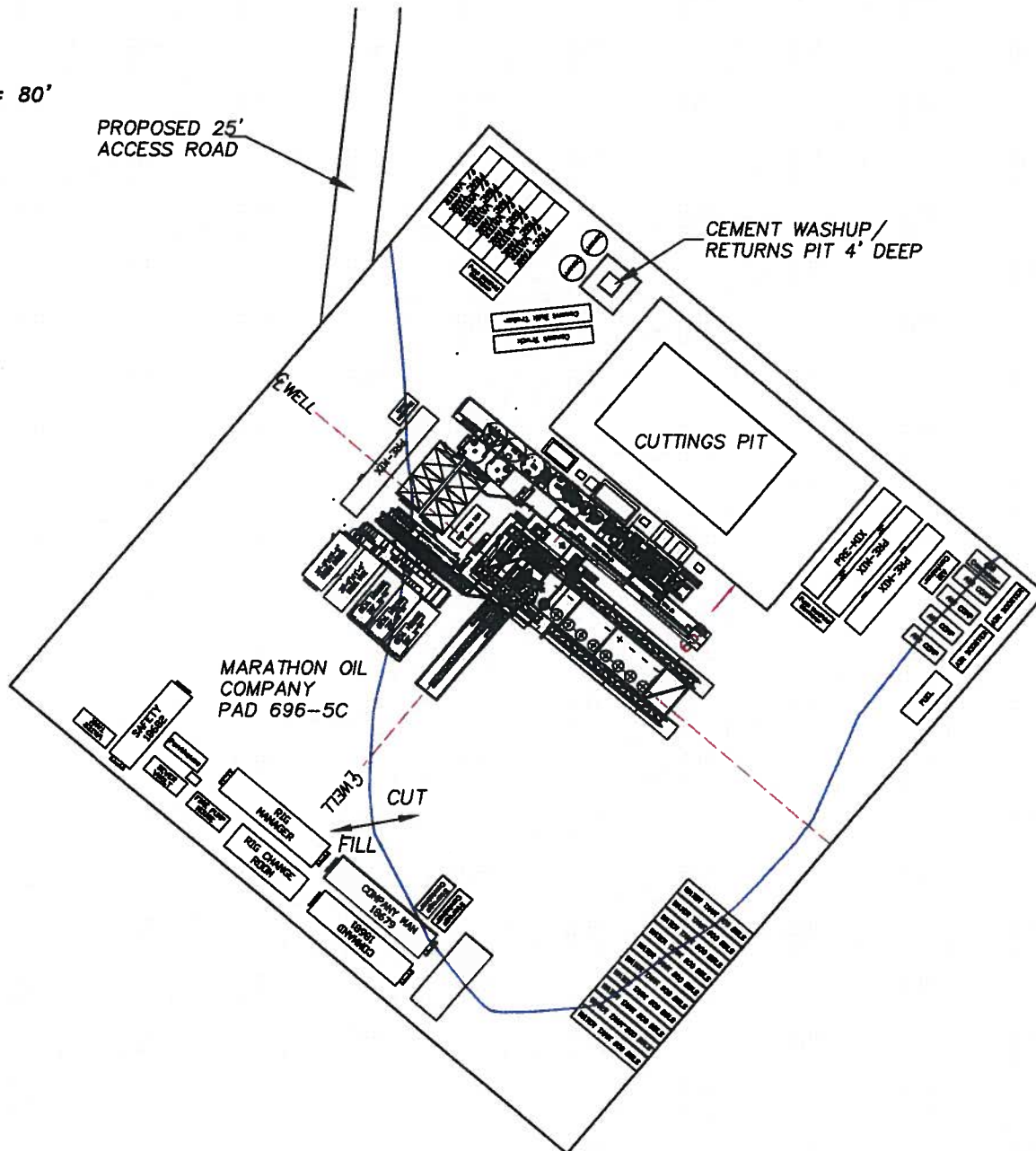
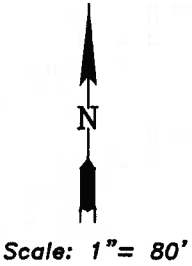
RESERVE PIT CAPACITY
 40,607 BBLs FULL
 32,039 BBLs WORKING
 CAPACITY WITH 2' FREE BOARD

JOB NO. 26099
 07/13/2009 CED
 PAD696-5C/PAD696-5C DRILL DIRECTION.DWG

PREPARED FOR:
 MARATHON OIL COMPANY
 P.O. Box 3128
 Houston, TX 77253
 5555 San Felipe
 Houston, TX 77056

LOCATION:
 PAD 696-5C
 WITHIN LOTS 11, 12, 14 & 21
 SECTION 5, T6S, R96W, 6TH PM.
 GARFIELD COUNTY, COLORADO
 SHEET 3 OF 4

**550 EAST 2ND NORTH
PH. 307-875-3638
FAX. 307-875-3640**



PREPARED FOR:
MARATHON OIL COMPANY
P.O. Box 3128
Houston, TX 77253
5555 San Felipe
Houston, TX 77056

LOCATION:
PAD 696-5C
WITHIN LOTS 11 & 12, SECTION 5,
T6S, R96W, 6TH PM.
GARFIELD COUNTY, COLORADO
SHEET 4 OF 12

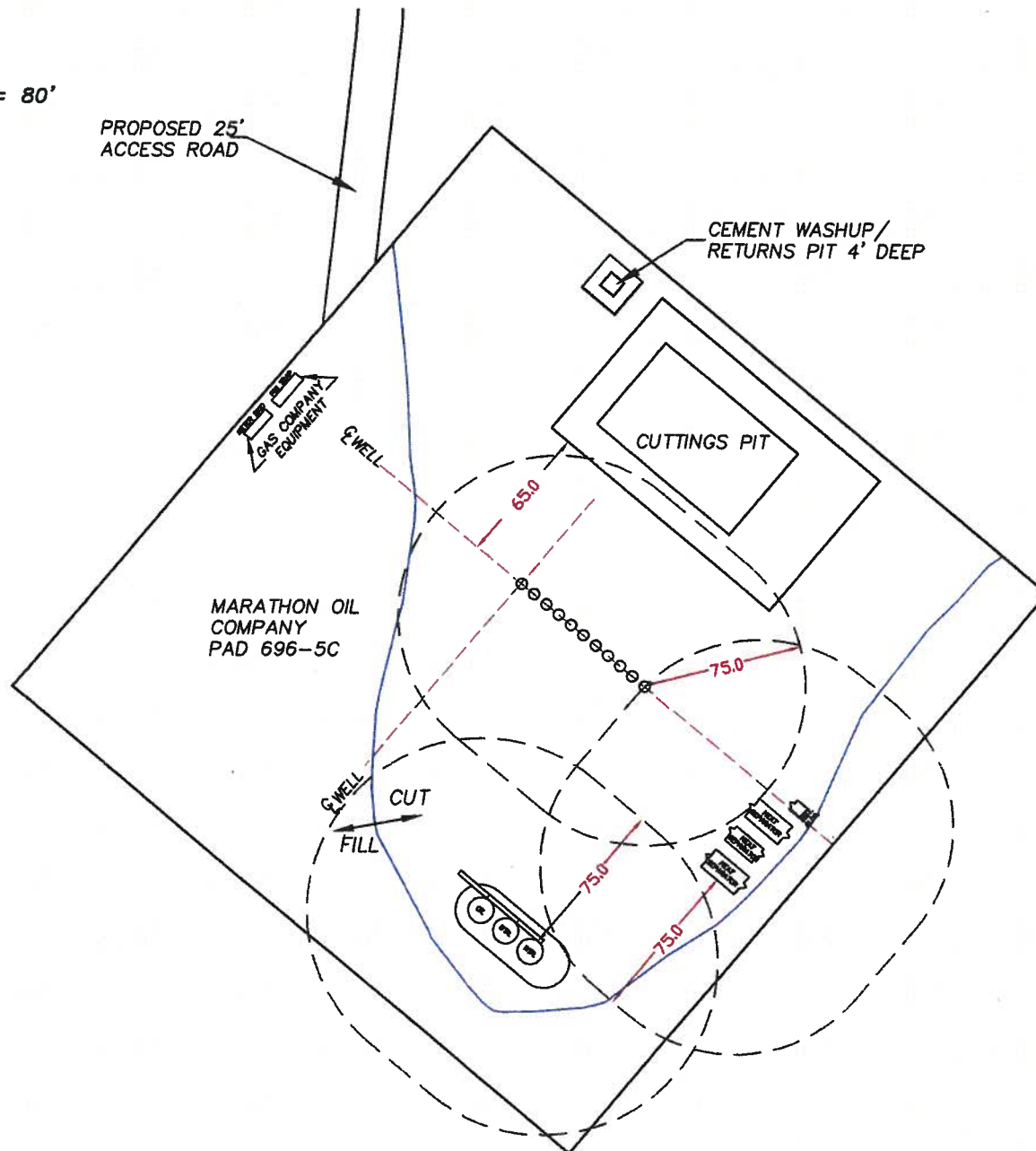
JOB NO. 26099
07/13/2009 CED
PAD 696-5C/04 696-5C FACILITIES.DWG

EXHIBIT "C5"
WILLIAM H. SMITH & ASSOCIATES P.C.
SURVEYING CONSULTANTS
MARATHON OIL COMPANY
PAD 696-5C PRODUCTION FACILITY LAYOUT

P.O. BOX 820
GREEN RIVER, WYOMING 82935

550 EAST 2ND NORTH
PH. 307-875-3638
FAX. 307-875-3640

Scale: 1" = 80'



PREPARED FOR:
MARATHON OIL COMPANY
P.O. Box 3128
Houston, TX 77253
5555 San Felipe
Houston, TX 77056

LOCATION:
PAD 696-5C
WITHIN LOTS 11 & 12, SECTION 5,
T6S, R96W, 6TH PM.
GARFIELD COUNTY, COLORADO
SHEET 5 OF 12

JOB NO. 26099
07/13/2009 CED
PAD 696-5C/04 696-5C FACILITIES.DWG