

DALEY LAND SURVEYING, INC.

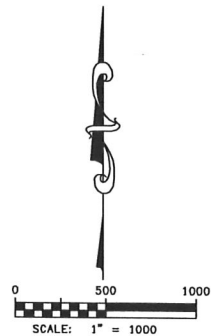
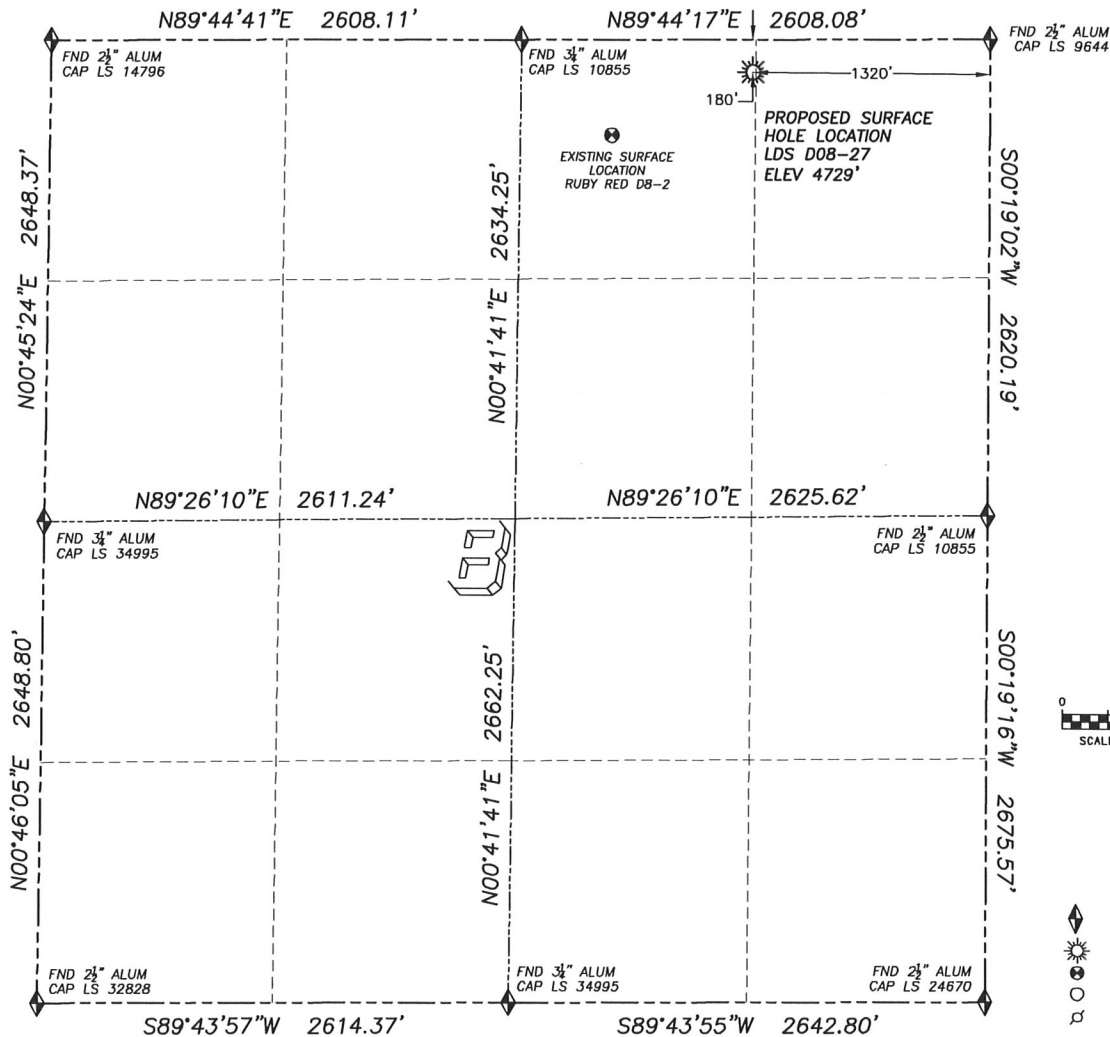
PARKER, CO. 80134

303 953 9841

# WELL LOCATION CERTIFICATE

## LDS D08-27

SECTION 8, TOWNSHIP 3 NORTH, RANGE 64 WEST OF THE 6TH PRINCIPAL MERIDIAN

**LEGEND**

- ◆ FOUND MONUMENT AS DESCRIBED
- ☀ PROPOSED WELL
- EXISTING WELL
- BOTTOM HOLE
- ABANDONED WELL

**NAD 83 LATITUDE AND LONGITUDE****LDS D08-27 SURFACE HOLE:**

LATITUDE: N40.24670°  
 LONGITUDE: W104.57018°  
 ELEVATION: 4729'  
 PDOP 1.7  
 180' FNL, 1320' FEL

**NEAREST EXISTING WELL:**

LDS RUBY RED D8-2 SURFACE HOLE  
 LATITUDE: N40.24575°  
 LONGITUDE: W104.57298°  
 ELEVATION: 4731'  
 856' SOUTHWEST

**QUARTER/QUARTER: NW4/NE4**

**NEAREST APPARENT PROPERTY LINE:**  
 180'± NORTH

IN ACCORDANCE WITH A REQUEST FROM MATT CAMPBELL OF NOBLE ENERGY INC., DALEY LAND SURVEYING, INC. HAS DETERMINED THE SURFACE LOCATION OF THE LDS D08-27 WELL TO BE 180' FNL, 1320' FEL, AS MEASURED AT NINETY (90) DEGREES FROM THE SECTION LINES OF SECTION 8, TOWNSHIP 3 NORTH, RANGE 64 WEST OF THE 6TH PRINCIPAL MERIDIAN, WELD COUNTY COLORADO.

I HEREBY CERTIFY THAT THIS WELL LOCATION CERTIFICATE WAS PREPARED BY ME OR UNDER MY DIRECT SUPERVISION, THAT THE WORK WAS COMPLETED ON 09/29/2009 FOR AND ON BEHALF OF NOBLE ENERGY, INC., AND THAT THIS MAP DOES NOT REPRESENT A BOUNDARY SURVEY, IT IS NOT A LAND SURVEY PLAT OR AN IMPROVEMENT SURVEY PLAT AND IT IS NOT TO BE RELIED UPON FOR THE ESTABLISHMENT OF FENCE, BUILDING OR OTHER FUTURE IMPROVEMENT LINES.

**NOTES:**

- 1) BASIS OF BEARINGS FOR THIS MAP ARE ASSUMED AND BASED UPON GPS OBSERVATIONS MADE BETWEEN MONUMENTS LOCATED AT THE NORTHEAST AND NORTH QUARTER CORNER OF SECTION 8, T.3N., R.64W., AND ALL BEARINGS SHOWN HEREON ARE RELATIVE THERETO.
- 2) HORIZONTAL DATUM IS NAD83.
- 3) VERTICAL DATUM IS NAVD83. ELEVATIONS ARE DERIVED FROM GPS-RTK OBSERVATIONS PROCESSED THROUGH OPUS, UTILIZING THE GEOD03 MODEL.
- 4) SEE VISIBLE IMPROVEMENTS EXHIBIT FOR VISIBLE IMPROVEMENTS WITHIN 400' OF PROPOSED SURFACE HOLE LOCATION
- 5) SURFACE USE: CULTIVATED FIELD

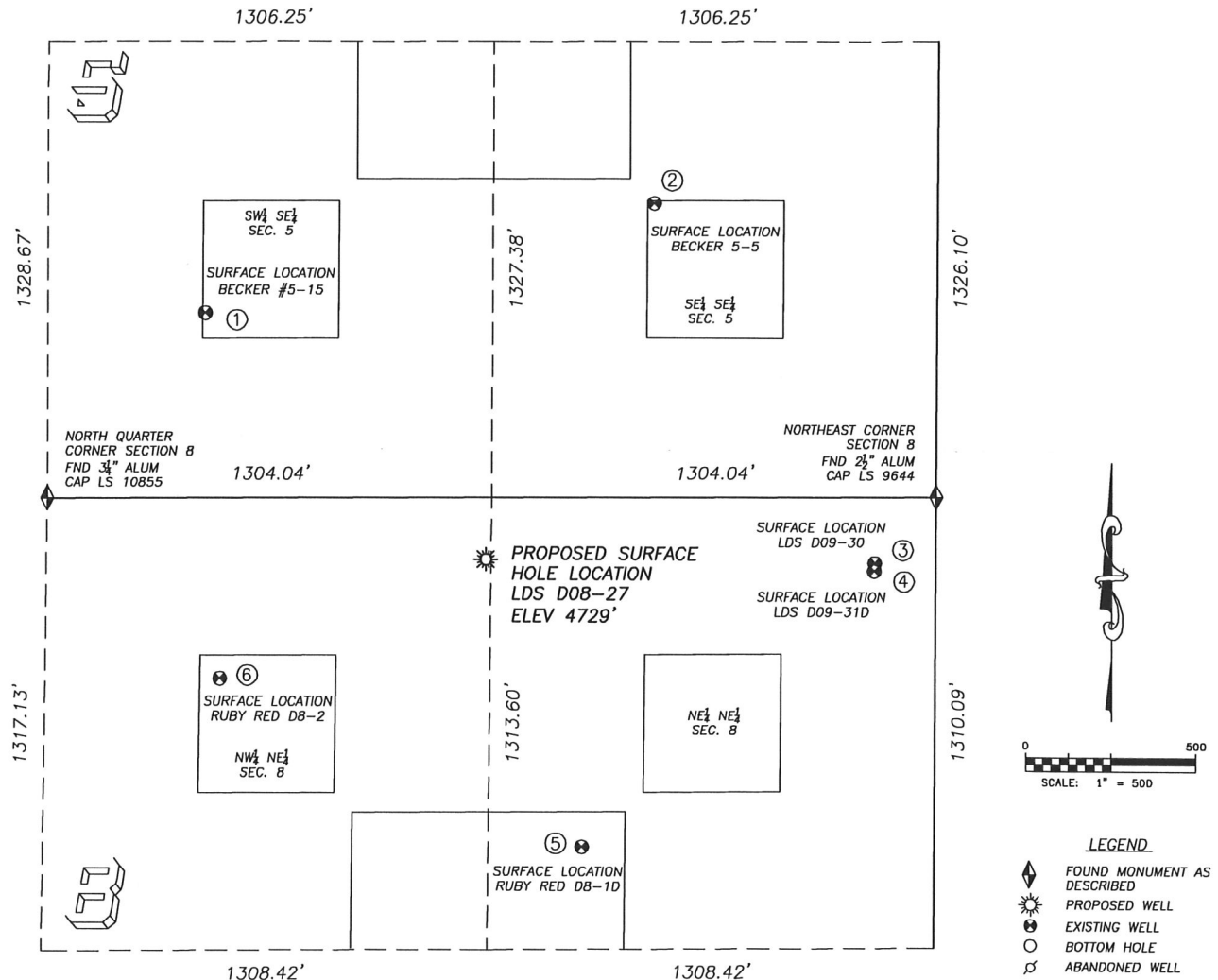
NOTICE: According to Colorado law you MUST commence any legal action based upon any defect in this W.L.C. within three years after you first discover such defect. In no event may any action based upon any such defect in this W.L.C. be commenced more than ten years from the date of the certification shown hereon.



FOR AND ON BEHALF OF  
 DALEY LAND SURVEYING INC.,  
 Robert Daley, PLS 35597

## SITE SKETCH LDS D08-27

SECTION 8, TOWNSHIP 3 NORTH, RANGE 64 WEST OF THE 6TH PRINCIPAL MERIDIAN



①  
**BECKER #5-15**  
SW/SE SEC. 5  
537' FSL, 2150' FEL  
1092' NW OF PROPOSED  
SURFACE HOLE LOCATION  
LAT. N40.24866°  
LONG. W104.57314°  
EL: 4734'  
PDOP 1.9

②  
**BECKER 5-5**  
SE/SE SEC. 5  
856' FSL, 833' FEL  
1148' NE OF PROPOSED  
SURFACE HOLE LOCATION  
LAT. N40.24955°  
LONG. W104.56842°  
EL: 4726'  
PDOP 1.2

③  
**LDS D09-30**  
NE/NE SEC. 8  
191' FNL, 179' FEL  
1141' E OF PROPOSED  
SURFACE HOLE LOCATION  
LAT. N40.24669°  
LONG. W104.56610°  
EL: 4727'  
PDOP 2.3

④  
**LDS D09-31D**  
NE/NE SEC. 8  
215' FNL, 181' FEL  
1140' E OF PROPOSED  
SURFACE HOLE LOCATION  
LAT. N40.24662°  
LONG. W104.56610°  
EL: 4727'  
PDOP 2.3

⑤  
**RUBY RED D 8-1D**  
NE/NE SEC. 8  
1015' FNL, 1033' FEL  
881' SE OF PROPOSED  
SURFACE HOLE LOCATION  
LAT. N40.24441°  
LONG. W104.56917°  
EL: 4730'  
PDOP 2.1

⑥  
**RUBY RED D 8-2**  
NW/NE SEC. 8  
526' FNL, 2100' FEL  
856' SW OF PROPOSED  
SURFACE HOLE LOCATION  
LAT. N40.24575°  
LONG. W104.57298°  
EL: 4731'  
PDOP 1.2

## NOTES:

- 1) THIS DOES NOT REPRESENT A BOUNDARY SURVEY
- 2) THE LATITUDES AND LONGITUDES SHOWN ARE REFERENCED TO NAD83
- 3) DATUM FOR ELEVATION IS NAVD88. ELEVATIONS ARE DERIVED FROM GPS-RTK OBSERVATIONS PROCESSED THROUGH OPUS, UTILIZING THE GEOID03 MODEL.