

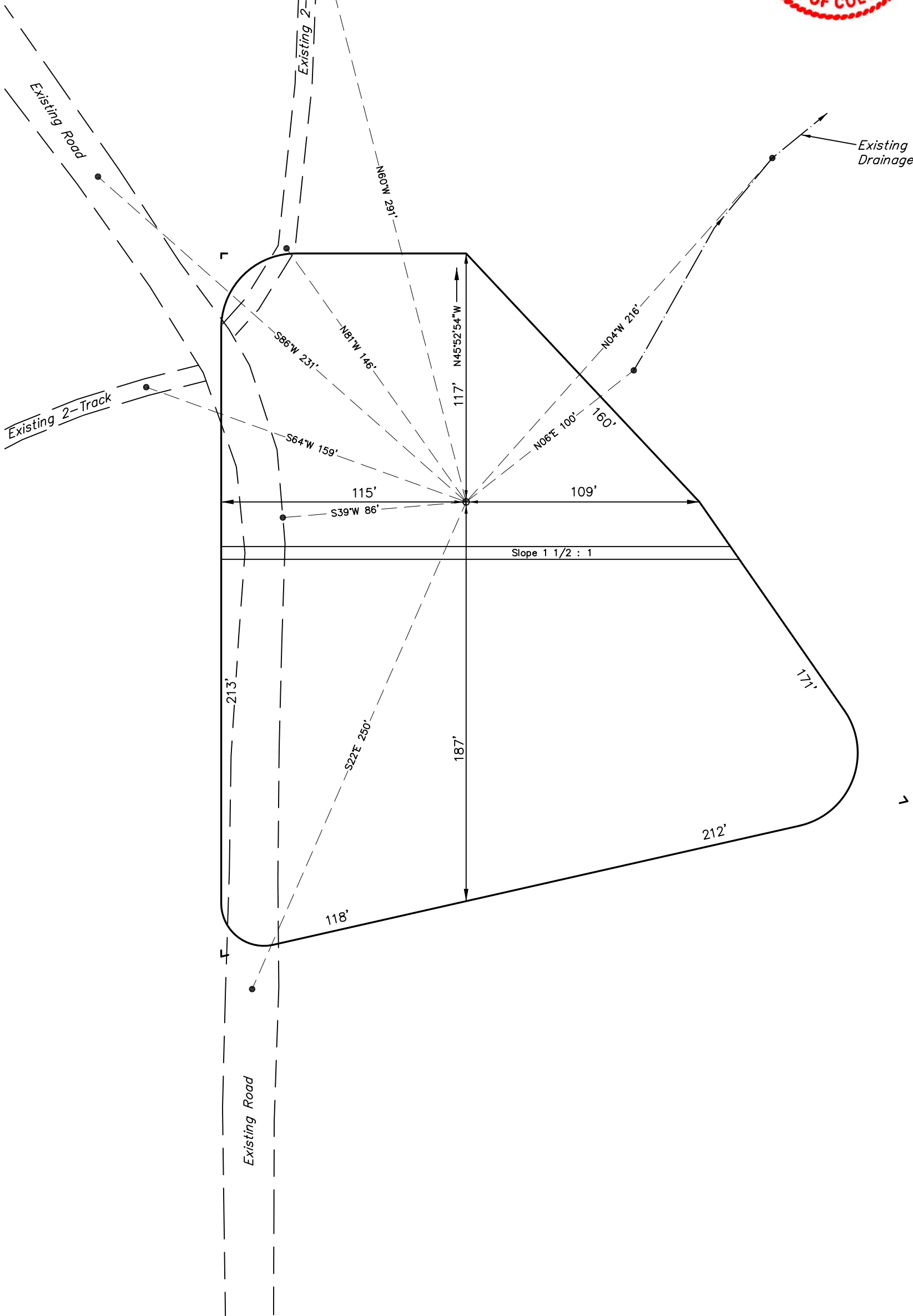
SCALE: 1" = 50'

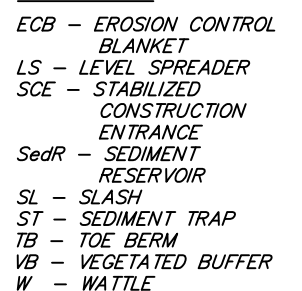
DATE: 11-05-09

Drawn By: D.R.B.

Revised: 11-25-09 D.R.B.

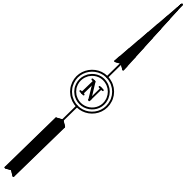
Revised: 12-14-09 D.R.B.



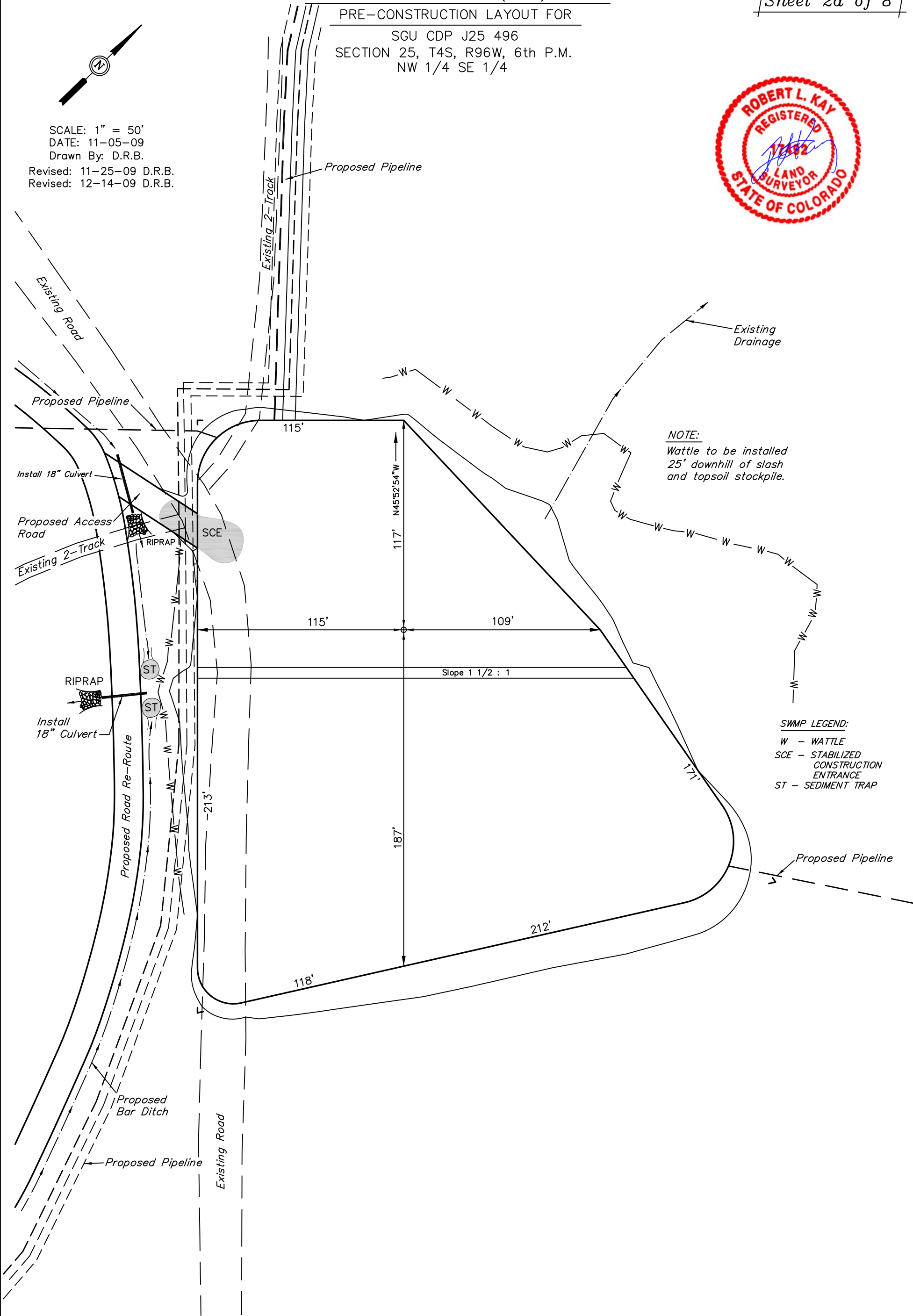


PRE-CONSTRUCTION LAYOUT FOR

SGU CDP J25 496
SECTION 25, T4S, R96W, 6th P.M.
NW 1/4 SE 1/4



SCALE: 1" = 50'
DATE: 11-05-09
Drawn By: D.R.B.
Revised: 11-25-09 D.R.B.
Revised: 12-14-09 D.R.B.

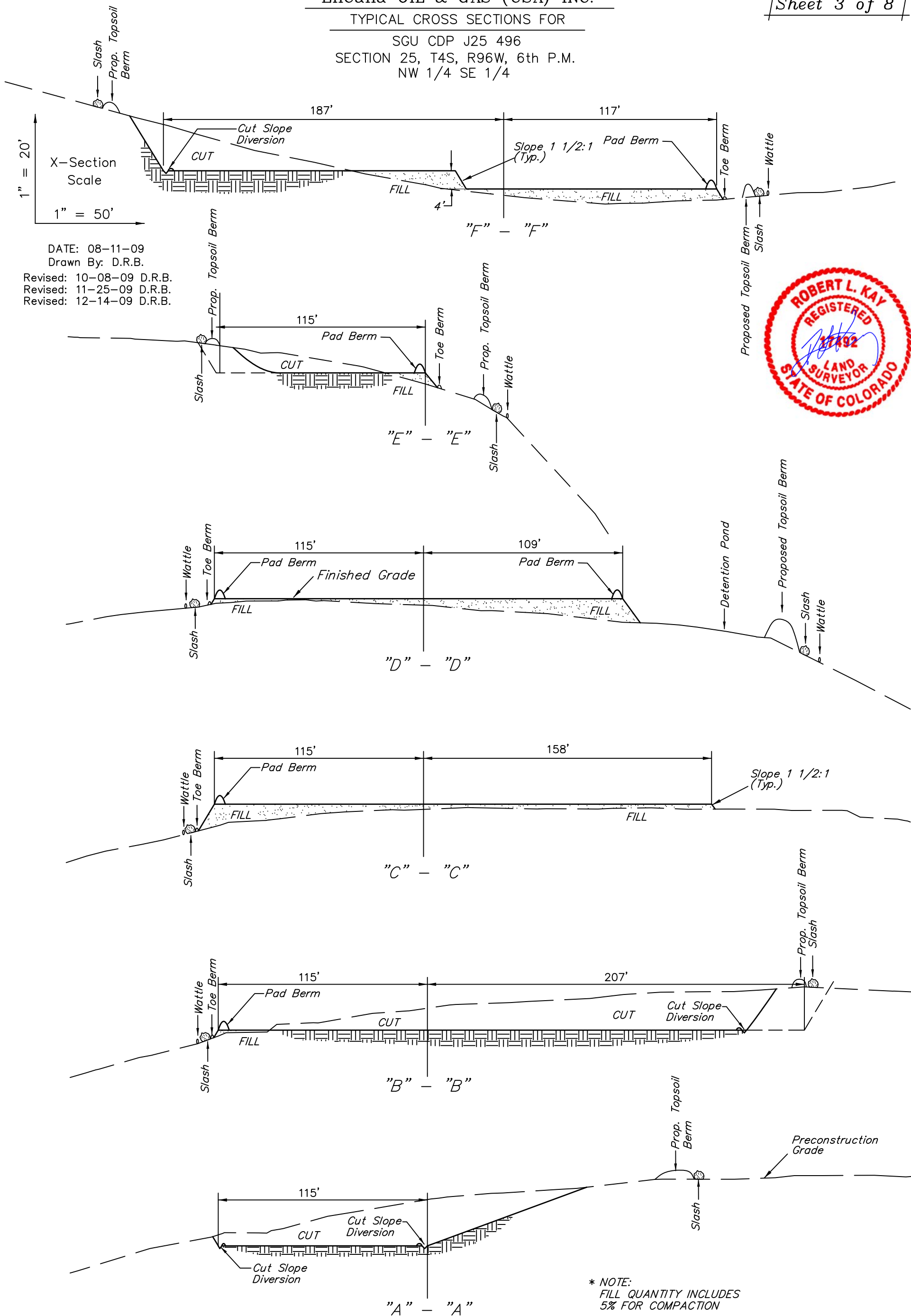


NOTE:
Wattle to be installed
25' downhill of slash
and topsoil stockpile.

SWMP LEGEND:
W - WATTLE
SCE - STABILIZED
CONSTRUCTION
ENTRANCE
ST - SEDIMENT TRAP

TYPICAL CROSS SECTIONS FOR

SGU CDP J25 496
SECTION 25, T4S, R96W, 6th P.M.
NW 1/4 SE 1/4



APPROXIMATE YARDAGES

CUT	
(6") Topsoil Stripping	= 1,520 Cu. Yds.
Remaining Location	= 4,920 Cu. Yds.
TOTAL CUT	= 6,440 CU.YDS.
FILL	= 4,920 CU.YDS.

EXCESS MATERIAL	= 1,520 Cu. Yds.
Topsoil	= 1,520 Cu. Yds.
EXCESS UNBALANCE	= 0 Cu. Yds.
(After Interim Rehabilitation)	

* NOTE:
FILL QUANTITY INCLUDES
5% FOR COMPACTION

TYPICAL RIG LAYOUT FOR

SGU CDP J25 496

SECTION 25, T4S, R96W, 6th P.M.
NW 1/4 SE 1/4

SCALE: 1" = 50'

DATE: 11-05-09

Drawn By: D.R.B.

Revised: 11-25-09 D.R.B.

Revised: 12-14-09 D.R.B.

NOTE:

12" Water Line
16" Dry Gas
6" Liquids Line
5.5" Frac Line
8" 3-phase from well F25 496
6" Gas Lift
(From Left to Right)

Proposed Pipelines

1 - 5 BARREL METHANOL
TANK w/ INJECTION PUMP1 - 5 BARREL CORROSION
INHIBITOR TANK w/
INJECTION PUMPS

EACH SKID HAS 4 PUMPS WITH
MOTORS AND FILTERS, AS WELL
AS MOTOR CONTROL CENTER
FOR STARTERS, BREAKERS,
COMPUTER, CONTROLS & OTHER
ELECTRICAL.

SWAMP LEGEND:

SCE - STABILIZED
CONSTRUCTION
ENTRANCE
ST - SEDIMENT TRAP

NOTE:

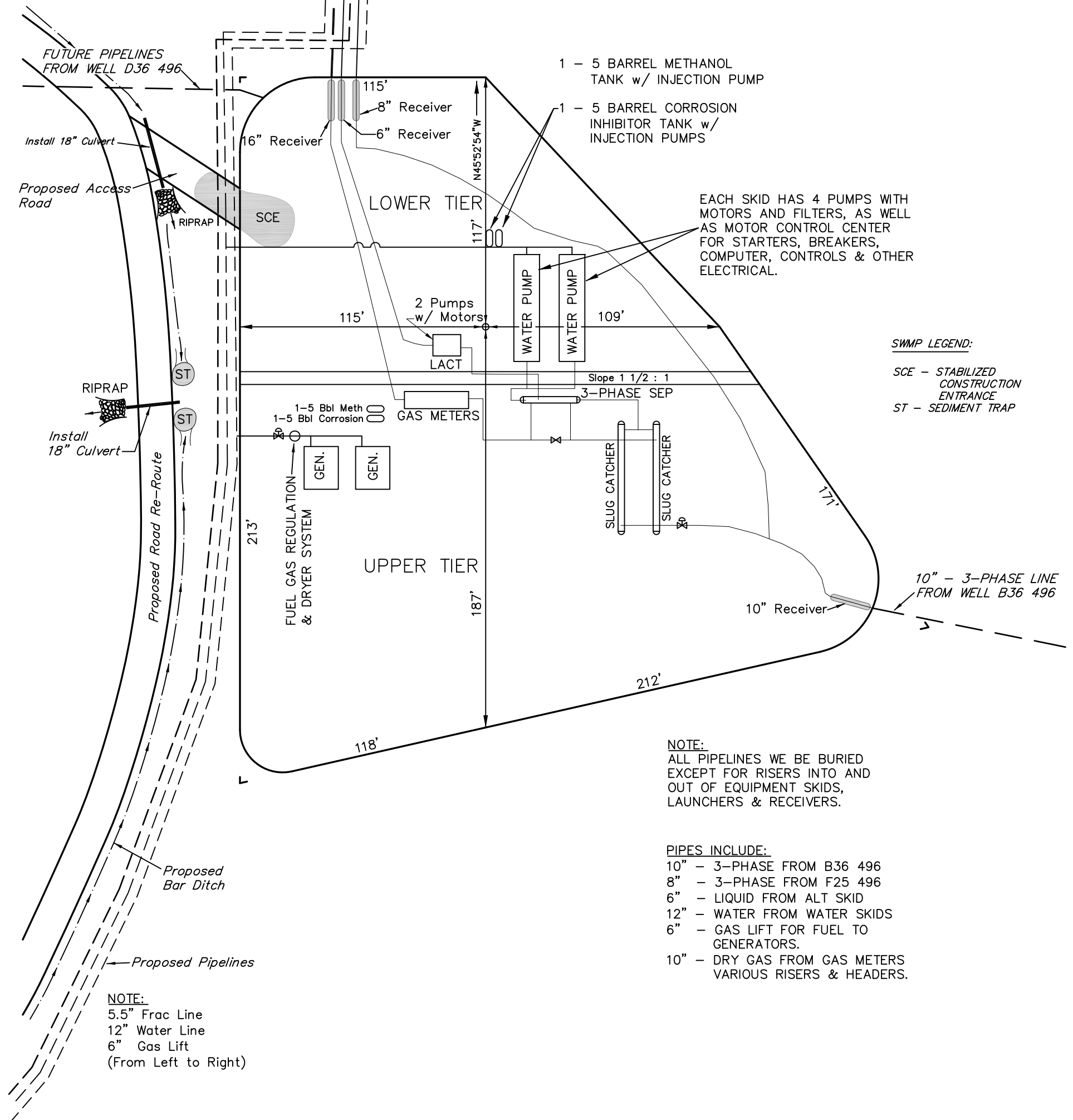
ALL PIPELINES WE BE BURIED
EXCEPT FOR RISERS INTO AND
OUT OF EQUIPMENT SKIDS,
LAUNCHERS & RECEIVERS.

PIPES INCLUDE:

10" - 3-PHASE FROM B36 496
8" - 3-PHASE FROM F25 496
6" - LIQUID FROM ALT SKID
12" - WATER FROM WATER SKIDS
6" - GAS LIFT FOR FUEL TO
GENERATORS.
10" - DRY GAS FROM GAS METERS
VARIOUS RISERS & HEADERS.

NOTE:

5.5" Frac Line
12" Water Line
6" Gas Lift
(From Left to Right)





SCALE: 1" = 50'

DATE: 08-11-09

Drawn By: D.R.B.

Revised: 10-08-09 D.R.B.

Revised: 11-25-09 D.R.B.

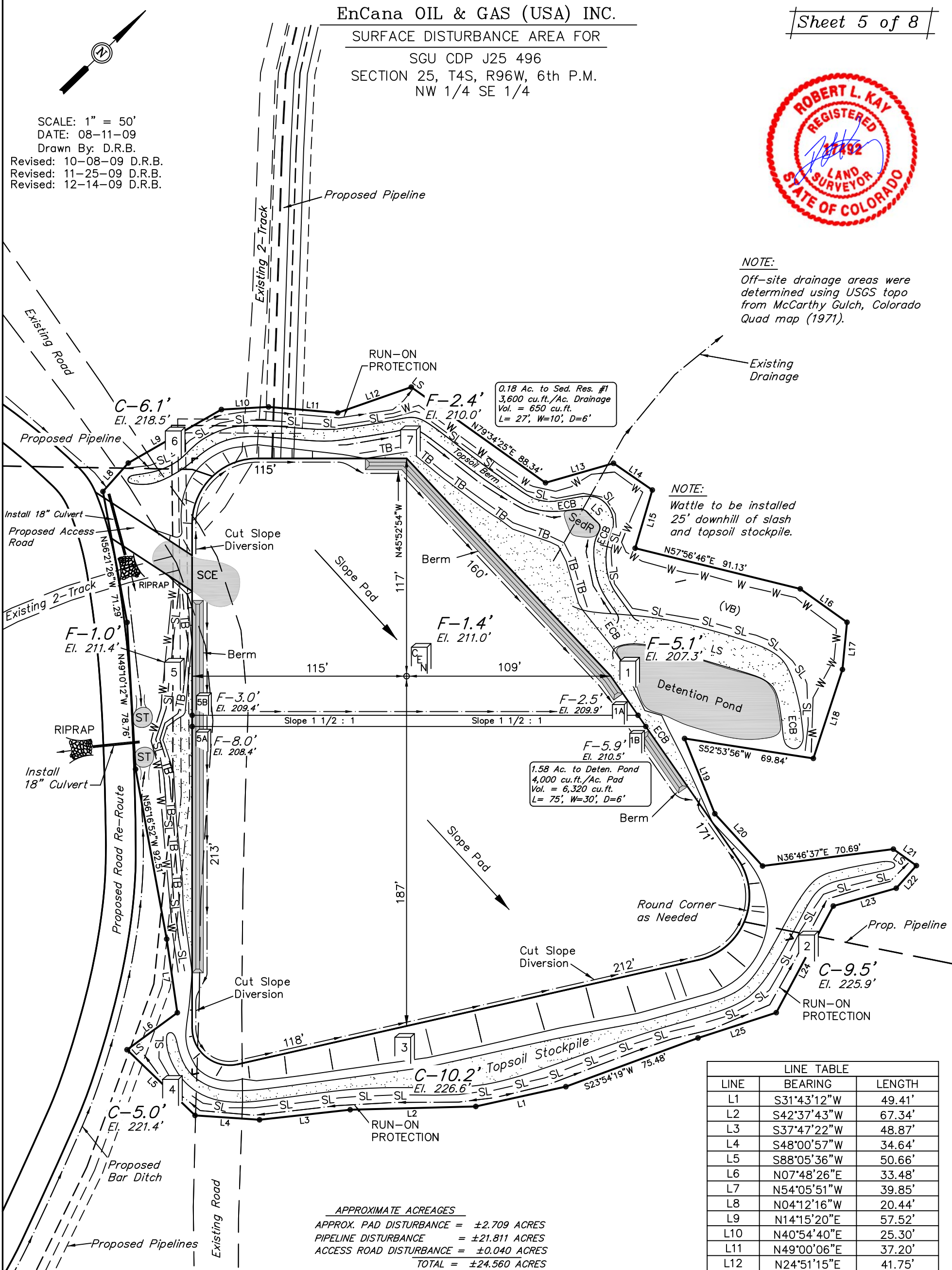
Revised: 12-14-09 D.R.B.

NOTE:

Off-site drainage areas were determined using USGS topo from McCarthy Gulch, Colorado Quad map (1971).

NOTE:

Wattle to be installed 25' downhill of slash and topsoil stockpile.



APPROXIMATE ACREAGES

APPROX. PAD DISTURBANCE	= ±2.709 ACRES
PIPELINE DISTURBANCE	= ±21.811 ACRES
ACCESS ROAD DISTURBANCE	= ±0.040 ACRES
TOTAL	= ±24.560 ACRES

SWMP LEGEND:

- ECB - EROSION CONTROL BLANKET
- LS - LEVEL SPREADER
- SCE - STABILIZED CONSTRUCTION ENTRANCE
- SedR - SEDIMENT RESERVOIR
- SL - SLASH
- ST - SEDIMENT TRAP
- TB - TOE BERM
- VB - VEGETATED BUFFER
- W - WATTLE

LINE TABLE		
LINE	BEARING	LENGTH
L1	S31°43'12"W	49.41'
L2	S42°37'43"W	67.34'
L3	S37°47'22"W	48.87'
L4	S48°00'57"W	34.64'
L5	S88°05'36"W	50.66'
L6	N07°48'26"E	33.48'
L7	N54°05'51"W	39.85'
L8	N04°12'16"W	20.44'
L9	N14°15'20"E	57.52'
L10	N40°54'40"E	25.30'
L11	N49°00'06"E	37.20'
L12	N24°51'15"E	41.75'
L13	N28°08'27"E	37.89'
L14	N78°39'19"E	25.26'
L15	S29°23'51"E	32.50'
L16	N79°38'10"E	30.81'
L17	S40°17'08"E	25.40'
L18	S27°46'58"E	50.12'
L19	S67°48'11"E	43.44'
L20	S88°18'39"E	37.90'
L21	N79°38'10"E	15.17'
L22	S04°09'45"E	16.23'
L23	S28°20'12"W	35.08'
L24	S17°43'46"E	64.75'
L25	S26°10'20"W	44.06'