

LEGEND:

● EXISTING LOCATION

EnCana OIL & GAS (USA) INC.

SGU CDP J25 496

SECTION 25, T4S, R96W, 6th P.M.

NW 1/4 SE 1/4

SHEET 6 of 8



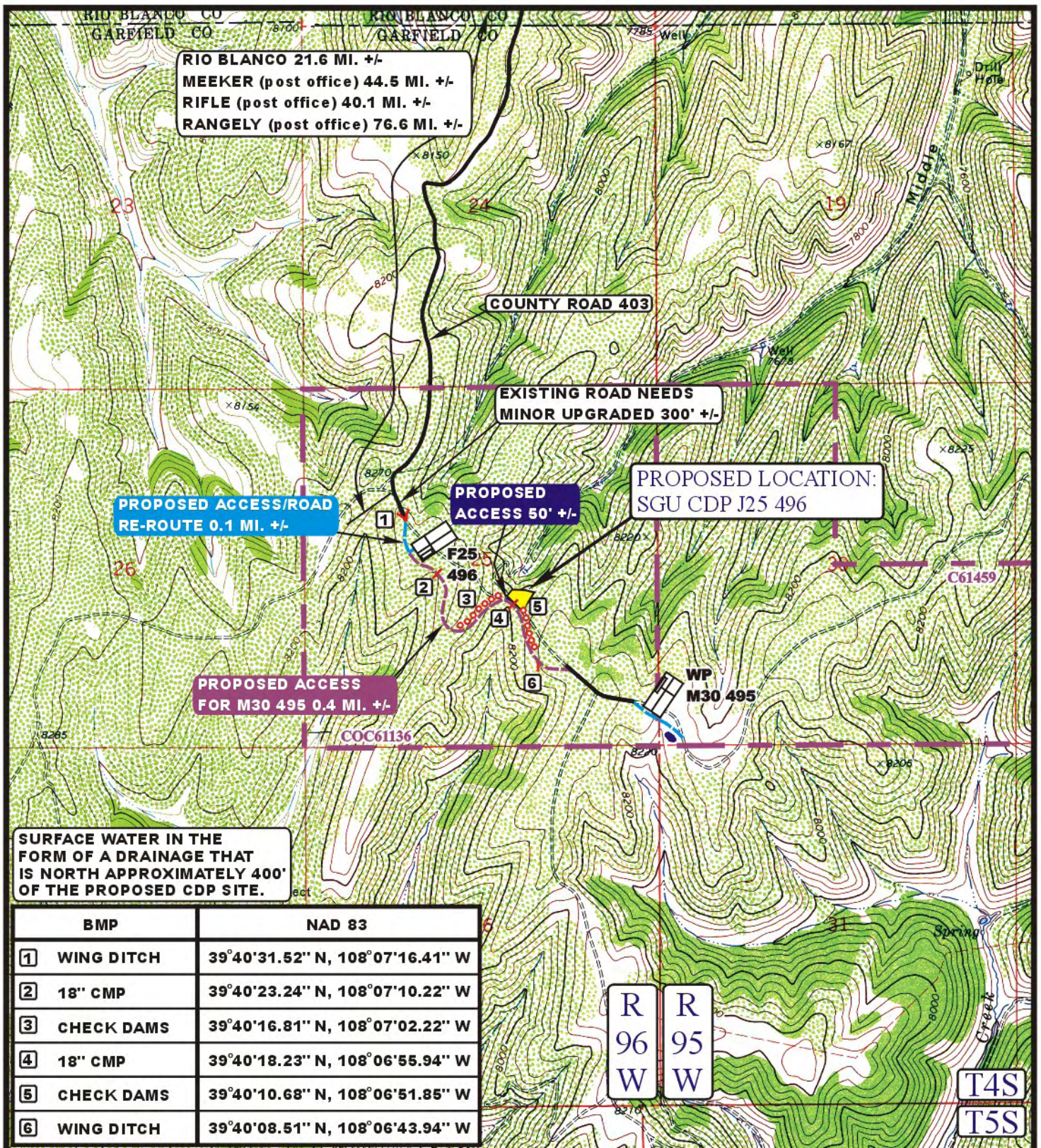
Uintah Engineering & Land Surveying
85 South 200 East Vernal, Utah 84078
(435) 789-1017 * FAX (435) 789-1813

**TOPOGRAPHIC
MAP**

8 12 09
MONTH DAY YEAR

SCALE: 1:100,000 DRAWN BY: J.L.G. REVISED: 12-15-09





LEGEND:

----- PROPOSED ACCESS ROAD
 _____ EXISTING ROAD

EnCana OIL & GAS (USA) INC.

SGU CDP J25 496

SECTION 25, T4S, R96W, 6th P.M.

NW 1/4 SE 1/4

SHEET 7 of 8



Uintah Engineering & Land Surveying
 85 South 200 East Vernal, Utah 84078
 (435) 789-1017 * FAX (435) 789-1813



TOPOGRAPHIC
MAP

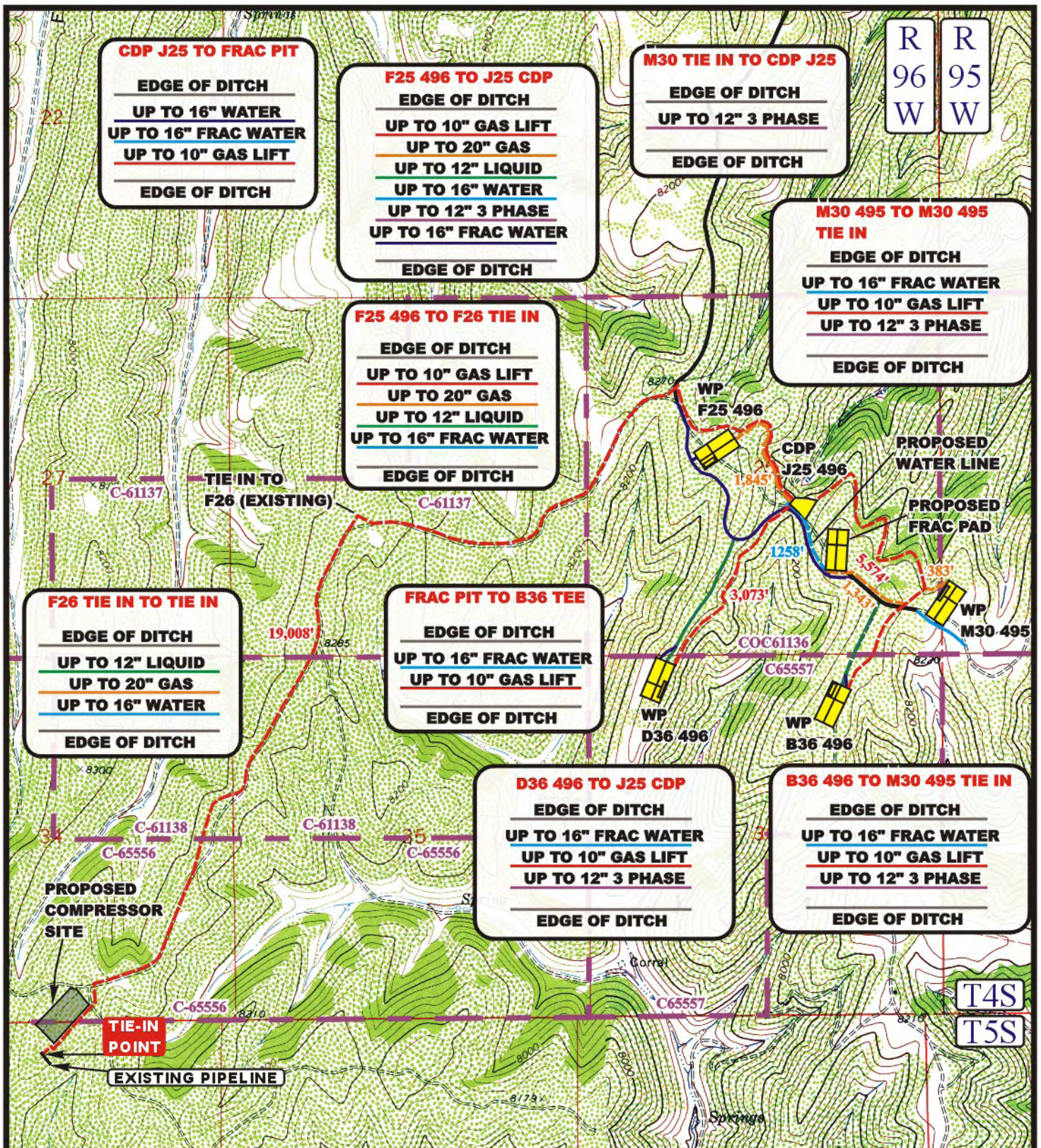
8 12 09
 MONTH DAY YEAR

SCALE: 1" = 2000'

DRAWN BY: J.L.G.

REVISED: 12-15-09

B
 TOPO



LEGEND:

- EXISTING PIPELINE
- PROPOSED PIPELINE
- PROPOSED ACCESS



Uintah Engineering & Land Surveying
 85 South 200 East Vernal, Utah 84078
 (435) 789-1017 * FAX (435) 789-1813



EnCana OIL & GAS (USA) INC.

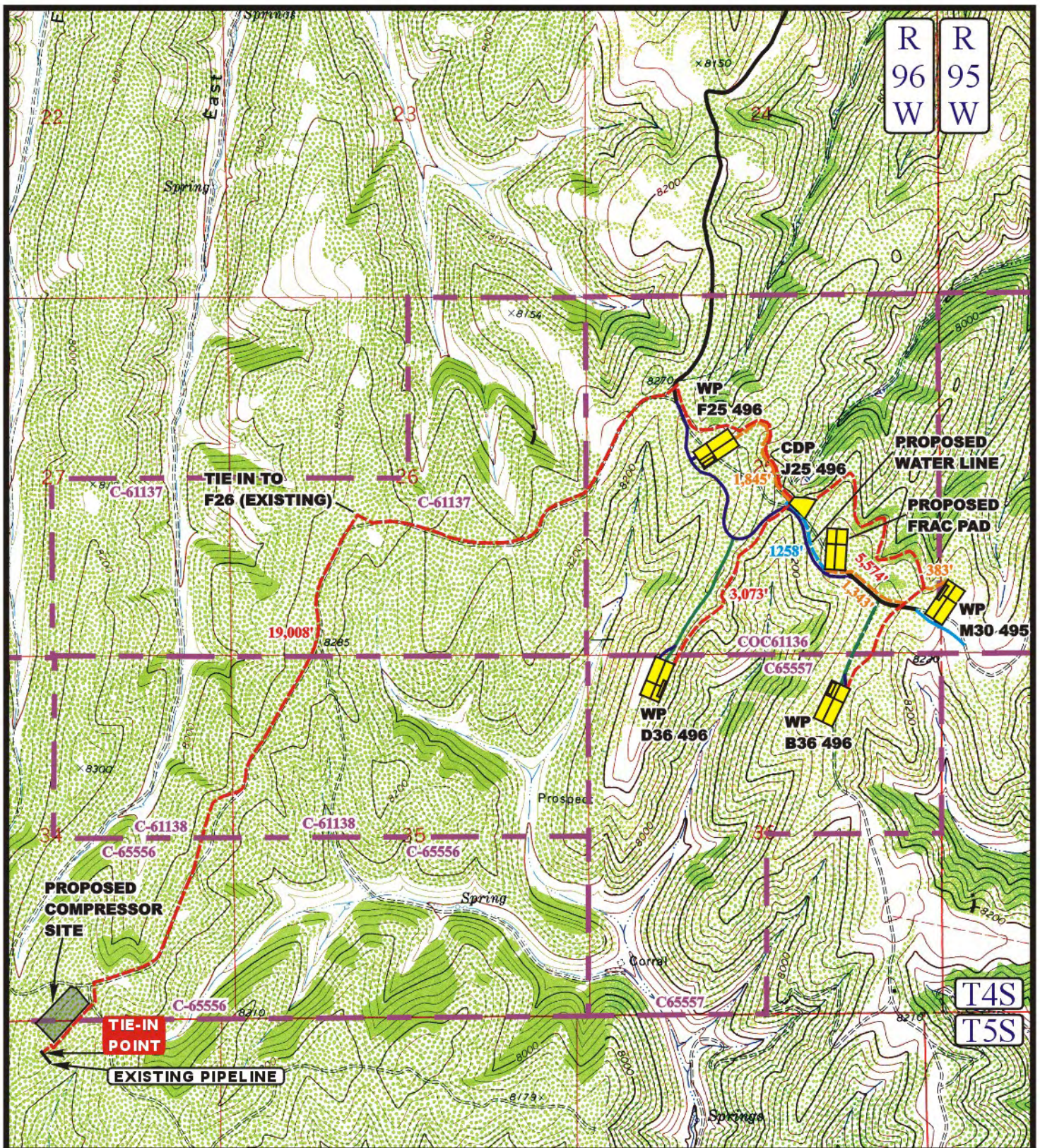
SGU CDP GATHERING SYSTEM
 SECTION 30, T4S, R95W, 6th P.M.,
 SECTIONS 25, 26, 34, 35 & 36, T4S, R96W, 6th P.M.,
 SECTION 3, T5S, R96W, 6th P.M. SHEET 8 of 8

TOPOGRAPHIC
 MAP

8 12 09
 MONTH DAY YEAR

SCALE: 1" = 2000' DRAWN BY: J.L.G. REVISED: 12-15-09

D1
 TOPO



LEGEND:

- EXISTING PIPELINE
- PROPOSED PIPELINE
- PROPOSED ACCESS

EnCana OIL & GAS (USA) INC.

SGU CDP GATHERING SYSTEM
SECTION 30, T4S, R95W, 6th P.M.,
SECTIONS 25, 26, 34, 35 & 36, T4S, R96W, 6th P.M.,
SECTION 3, T5S, R96W, 6th P.M. SHEET 8 of 8



Uintah Engineering & Land Surveying
85 South 200 East Vernal, Utah 84078
(435) 789-1017 * FAX (435) 789-1813



TOPOGRAPHIC
MAP

8 12 09
MONTH DAY YEAR

D1
TOPO

SCALE: 1" = 2000' DRAWN BY: J.L.G. REVISED: 12-15-09