



Project: MONTEZUMA COUNTY, COLORADO
 Site: MCAFEE 3H-19-38-16
 Well: MCAFEE 3H-19-38-16
 Wellbore: MCAFEE 3H-19-38-16
 Design: Design #2
 Lat: 37° 32' 36.610 N
 Long: 108° 39' 28.060 W
 GL: 7079.00
 KB: WELL @ 7095.00ft (Original Well Elev)

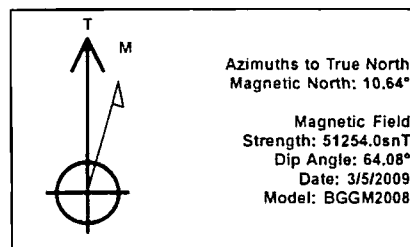


Weatherford®

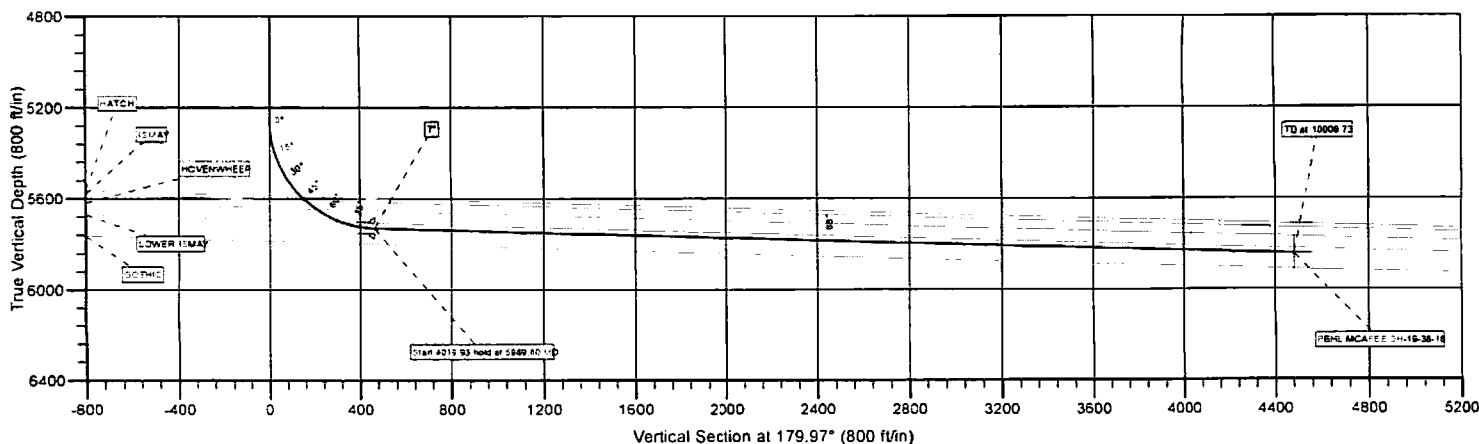
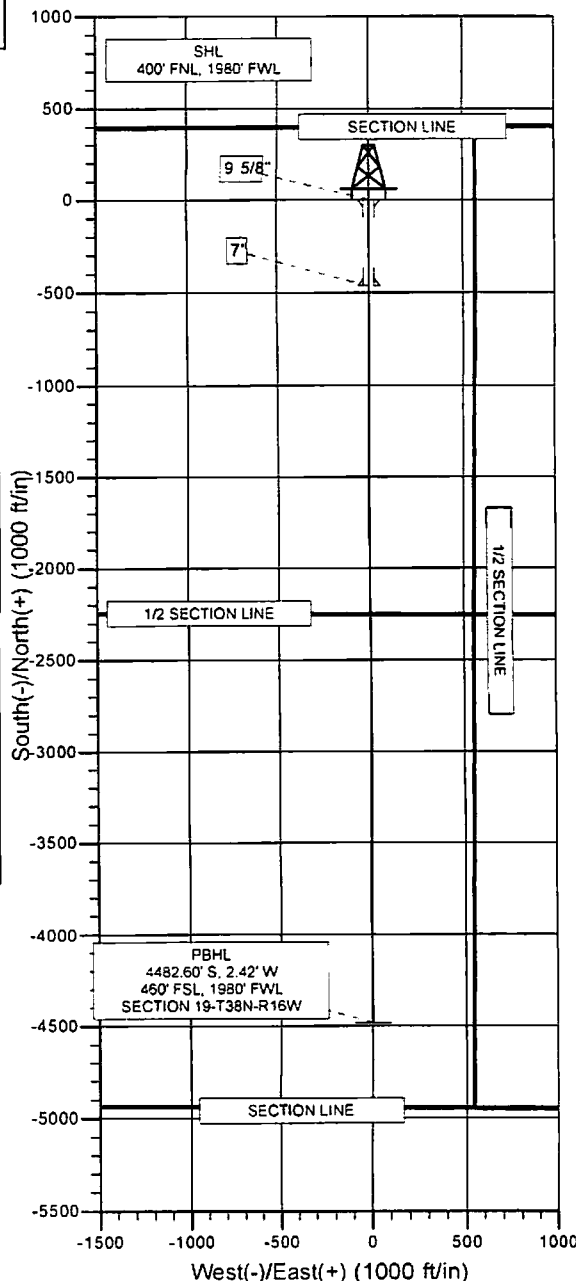
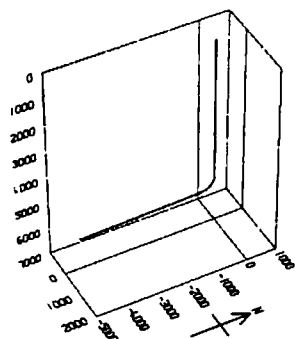
SECTION DETAILS								
MD	Inc	Azi	TVD	+N/-S	+E/-W	DLeg	TFace	VSec
0.00	0.00	0.00	0.00	0.00	0.00	0.00	0.00	0.00
5253.05	0.00	0.00	5253.05	0.00	0.00	0.00	0.00	0.00
5989.80	88.41	179.97	5730.33	-464.22	0.25	12.00	179.97	464.22
10009.73	88.41	179.97	5841.87	-4482.60	2.42	0.00	0.00	4482.60
Annotation								
Start Build 12.00								
Start 4019.93 hold at 5989.80 MD								
TD at 10009.73								

WELL DETAILS: MCAFEE 3H-19-38-16						
+N/-S	+E/-W	Northing	Ground Level: 7079.00	Easting	Latitude	Longitude
0.00	0.00	334738.88		1084616.72	37° 32' 36.610 N	108° 39' 28.060 W

WELLBORE TARGET DETAILS (LAT/LONG)						
Name	TVD	+N/-S	+E/-W	Latitude	Longitude	Shape
PBHL MCAFEE 3H-19-38-16	5841.87	-4482.60	2.42	37° 31' 52.290 N	108° 39' 28.030 W	Point



FORMATION TOP DETAILS		
TVDPath	MDPath	Formation
1311.00	1311.00	GOthic
2051.00	2051.00	ENTRADA
4217.00	4217.00	CHINLE
5591.92	5629.82	HERMOSA
5609.43	5655.38	HATCH
5648.84	5719.63	ISMAY
5703.89	5842.84	HOVENWHEEP
		LOWER ISMAY



Plan: Design #2 (MCAFEE 3H-19-38-16/MCAFEE 3H-19-38-16)

Created By: TRACY WILLIAMS Date: 14:55 March 05 2009



Bill Barrett Corporation

BILL BARRETT CORP

MONTEZUMA COUNTY, COLORADO

MCAFEE 3H-19-38-16

MCAFEE 3H-19-38-16

MCAFEE 3H-19-38-16

Plan: Design #2

Standard Planning Report

05 March, 2009



Weatherford®

Database: EDM 2003.21 Single User Db
Company: BILL BARRETT CORP
Project: MONTEZUMA COUNTY, COLORADO
Site: MCAFEE 3H-19-38-16
Well: MCAFEE 3H-19-38-16
Wellbore: MCAFEE 3H-19-38-16
Design: Design #2

Local Co-ordinate Reference: Well MCAFEE 3H-19-38-16
TVD Reference: WELL @ 7095.00ft (Original Well Elev)
MD Reference: WELL @ 7095.00ft (Original Well Elev)
North Reference: True
Survey Calculation Method: Minimum Curvature

Project	MONTEZUMA COUNTY, COLORADO		
Map System:	US State Plane 1927 (Exact solution)	System Datum:	Ground Level
Geo Datum:	NAD 1927 (NADCON CONUS)		
Map Zone:	Colorado South 503		

Site MCAFEE 3H-19-38-16
Site Position:
From: Lat/Long **Northing:** 334,738.88 ft **Latitude:** 37° 32' 36.610 N
Position Uncertainty: 0.00 ft **Easting:** 1,084,616.72 ft **Longitude:** 108° 39' 28.060 W
Slot Radius: " **Grid Convergence:** -1.94 °

Well MCAFEE 3H-19-38-16
Well Position +N/-S 0.00 ft **Northing:** 334,738.88 ft **Latitude:** 37° 32' 36.610 N
 +E/-W 0.00 ft **Easting:** 1,084,616.72 ft **Longitude:** 108° 39' 28.060 W
Position Uncertainty 0.00 ft **Wellhead Elevation:** ft **Ground Level:** 7,079.00 ft

Wellbore MCAFEE 3H-19-38-16
Magnetics

Model Name	Sample Date	Declination (°)	Dip Angle (°)	Field Strength (nT)
BGGM2008	3/5/2009	10.64	64.08	51,254

Design Design #2
Audit Notes:
Version: **Phase:** PLAN **Tie On Depth:** 0.00
Vertical Section:

Depth From (TVD) (ft)	+N/-S (ft)	+E/-W (ft)	Direction (°)
0.00	0.00	0.00	179.97

Plan Sections

Measured Depth (ft)	Inclination (°)	Azimuth (°)	Vertical Depth (ft)	+N/-S (ft)	+E/-W (ft)	Dogleg Rate (°/100ft)	Build Rate (°/100ft)	Turn Rate (°/100ft)	TFO (°)	Target
0.00	0.00	0.00	0.00	0.00	0.00	0.00	0.00	0.00	0.00	
5,253.05	0.00	0.00	5,253.05	0.00	0.00	0.00	0.00	0.00	0.00	
5,989.80	88.41	179.97	5,730.33	-464.22	0.25	12.00	12.00	0.00	179.97	PBHL MCAFEE 3H
10,009.73	88.41	179.97	5,841.87	-4,482.60	2.42	0.00	0.00	0.00	0.00	PBHL MCAFEE 3H



Database: EDM 2003.21 Single User Db
Company: BILL BARRETT CORP
Project: MONTEZUMA COUNTY, COLORADO
Site: MCAFEE 3H-19-38-16
Well: MCAFEE 3H-19-38-16
Wellbore: MCAFEE 3H-19-38-16
Design: Design #2

Local Co-ordinate Reference: Well MCAFEE 3H-19-38-16
TVD Reference: WELL @ 7095.00ft (Original Well Elev)
MD Reference: WELL @ 7095.00ft (Original Well Elev)
North Reference: True
Survey Calculation Method: Minimum Curvature

Planned Survey

Measured Depth (ft)	Inclination (°)	Azimuth (°)	Vertical Depth (ft)	+N/-S (ft)	+E/-W (ft)	Vertical Section (ft)	Dogleg Rate (°/100ft)	Build Rate (°/100ft)	Turn Rate (°/100ft)
0.00	0.00	0.00	0.00	0.00	0.00	0.00	0.00	0.00	0.00
100.00	0.00	0.00	100.00	0.00	0.00	0.00	0.00	0.00	0.00
200.00	0.00	0.00	200.00	0.00	0.00	0.00	0.00	0.00	0.00
300.00	0.00	0.00	300.00	0.00	0.00	0.00	0.00	0.00	0.00
400.00	0.00	0.00	400.00	0.00	0.00	0.00	0.00	0.00	0.00
500.00	0.00	0.00	500.00	0.00	0.00	0.00	0.00	0.00	0.00
600.00	0.00	0.00	600.00	0.00	0.00	0.00	0.00	0.00	0.00
700.00	0.00	0.00	700.00	0.00	0.00	0.00	0.00	0.00	0.00
800.00	0.00	0.00	800.00	0.00	0.00	0.00	0.00	0.00	0.00
900.00	0.00	0.00	900.00	0.00	0.00	0.00	0.00	0.00	0.00
1,000.00	0.00	0.00	1,000.00	0.00	0.00	0.00	0.00	0.00	0.00
1,100.00	0.00	0.00	1,100.00	0.00	0.00	0.00	0.00	0.00	0.00
1,200.00	0.00	0.00	1,200.00	0.00	0.00	0.00	0.00	0.00	0.00
1,300.00	0.00	0.00	1,300.00	0.00	0.00	0.00	0.00	0.00	0.00
ENTRADA									
1,311.00	0.00	0.00	1,311.00	0.00	0.00	0.00	0.00	0.00	0.00
1,400.00	0.00	0.00	1,400.00	0.00	0.00	0.00	0.00	0.00	0.00
1,500.00	0.00	0.00	1,500.00	0.00	0.00	0.00	0.00	0.00	0.00
1,600.00	0.00	0.00	1,600.00	0.00	0.00	0.00	0.00	0.00	0.00
1,700.00	0.00	0.00	1,700.00	0.00	0.00	0.00	0.00	0.00	0.00
1,800.00	0.00	0.00	1,800.00	0.00	0.00	0.00	0.00	0.00	0.00
1,900.00	0.00	0.00	1,900.00	0.00	0.00	0.00	0.00	0.00	0.00
9 5/8"									
2,000.00	0.00	0.00	2,000.00	0.00	0.00	0.00	0.00	0.00	0.00
CHINLE									
2,051.00	0.00	0.00	2,051.00	0.00	0.00	0.00	0.00	0.00	0.00
2,100.00	0.00	0.00	2,100.00	0.00	0.00	0.00	0.00	0.00	0.00
2,200.00	0.00	0.00	2,200.00	0.00	0.00	0.00	0.00	0.00	0.00
2,300.00	0.00	0.00	2,300.00	0.00	0.00	0.00	0.00	0.00	0.00
2,400.00	0.00	0.00	2,400.00	0.00	0.00	0.00	0.00	0.00	0.00
2,500.00	0.00	0.00	2,500.00	0.00	0.00	0.00	0.00	0.00	0.00
2,600.00	0.00	0.00	2,600.00	0.00	0.00	0.00	0.00	0.00	0.00
2,700.00	0.00	0.00	2,700.00	0.00	0.00	0.00	0.00	0.00	0.00
2,800.00	0.00	0.00	2,800.00	0.00	0.00	0.00	0.00	0.00	0.00
2,900.00	0.00	0.00	2,900.00	0.00	0.00	0.00	0.00	0.00	0.00
3,000.00	0.00	0.00	3,000.00	0.00	0.00	0.00	0.00	0.00	0.00
3,100.00	0.00	0.00	3,100.00	0.00	0.00	0.00	0.00	0.00	0.00
3,200.00	0.00	0.00	3,200.00	0.00	0.00	0.00	0.00	0.00	0.00
3,300.00	0.00	0.00	3,300.00	0.00	0.00	0.00	0.00	0.00	0.00
3,400.00	0.00	0.00	3,400.00	0.00	0.00	0.00	0.00	0.00	0.00
3,500.00	0.00	0.00	3,500.00	0.00	0.00	0.00	0.00	0.00	0.00
3,600.00	0.00	0.00	3,600.00	0.00	0.00	0.00	0.00	0.00	0.00
3,700.00	0.00	0.00	3,700.00	0.00	0.00	0.00	0.00	0.00	0.00
3,800.00	0.00	0.00	3,800.00	0.00	0.00	0.00	0.00	0.00	0.00
3,900.00	0.00	0.00	3,900.00	0.00	0.00	0.00	0.00	0.00	0.00
4,000.00	0.00	0.00	4,000.00	0.00	0.00	0.00	0.00	0.00	0.00
4,100.00	0.00	0.00	4,100.00	0.00	0.00	0.00	0.00	0.00	0.00
4,200.00	0.00	0.00	4,200.00	0.00	0.00	0.00	0.00	0.00	0.00
HERMOSA									
4,217.00	0.00	0.00	4,217.00	0.00	0.00	0.00	0.00	0.00	0.00
4,300.00	0.00	0.00	4,300.00	0.00	0.00	0.00	0.00	0.00	0.00
4,400.00	0.00	0.00	4,400.00	0.00	0.00	0.00	0.00	0.00	0.00
4,500.00	0.00	0.00	4,500.00	0.00	0.00	0.00	0.00	0.00	0.00
4,600.00	0.00	0.00	4,600.00	0.00	0.00	0.00	0.00	0.00	0.00



Database: EDM 2003.21 Single User Db
Company: BILL BARRETT CORP
Project: MONTEZUMA COUNTY, COLORADO
Site: MCAFFEE 3H-19-38-16
Well: MCAFFEE 3H-19-38-16
Wellbore: MCAFFEE 3H-19-38-16
Design: Design #2

Local Co-ordinate Reference: Well MCAFFEE 3H-19-38-16
TVD Reference: WELL @ 7095.00ft (Original Well Elev)
MD Reference: WELL @ 7095.00ft (Original Well Elev)
North Reference: True
Survey Calculation Method: Minimum Curvature

Planned Survey

Measured Depth (ft)	Inclination (°)	Azimuth (°)	Vertical Depth (ft)	+N/-S (ft)	+E/-W (ft)	Vertical Section (ft)	Dogleg Rate (°/100ft)	Build Rate (°/100ft)	Turn Rate (°/100ft)
4,700.00	0.00	0.00	4,700.00	0.00	0.00	0.00	0.00	0.00	0.00
4,800.00	0.00	0.00	4,800.00	0.00	0.00	0.00	0.00	0.00	0.00
4,900.00	0.00	0.00	4,900.00	0.00	0.00	0.00	0.00	0.00	0.00
5,000.00	0.00	0.00	5,000.00	0.00	0.00	0.00	0.00	0.00	0.00
5,100.00	0.00	0.00	5,100.00	0.00	0.00	0.00	0.00	0.00	0.00
5,200.00	0.00	0.00	5,200.00	0.00	0.00	0.00	0.00	0.00	0.00
Start Build 12.00									
5,253.05	0.00	0.00	5,253.05	0.00	0.00	0.00	0.00	0.00	0.00
5,275.00	2.63	179.97	5,274.99	-0.50	0.00	0.50	12.00	12.00	0.00
5,300.00	5.63	179.97	5,299.92	-2.31	0.00	2.31	12.00	12.00	0.00
5,325.00	8.63	179.97	5,324.73	-5.41	0.00	5.41	12.00	12.00	0.00
5,350.00	11.63	179.97	5,349.34	-9.81	0.01	9.81	12.00	12.00	0.00
5,375.00	14.63	179.97	5,373.68	-15.49	0.01	15.49	12.00	12.00	0.00
5,400.00	17.63	179.97	5,397.69	-22.44	0.01	22.44	12.00	12.00	0.00
5,425.00	20.63	179.97	5,421.31	-30.63	0.02	30.63	12.00	12.00	0.00
5,450.00	23.63	179.97	5,444.46	-40.05	0.02	40.05	12.00	12.00	0.00
5,475.00	26.63	179.97	5,467.09	-50.66	0.03	50.66	12.00	12.00	0.00
5,500.00	29.63	179.97	5,489.14	-62.45	0.03	62.45	12.00	12.00	0.00
5,525.00	32.63	179.97	5,510.53	-75.38	0.04	75.38	12.00	12.00	0.00
5,550.00	35.63	179.97	5,531.22	-89.40	0.05	89.40	12.00	12.00	0.00
5,575.00	38.63	179.97	5,551.15	-104.49	0.06	104.49	12.00	12.00	0.00
5,600.00	41.63	179.97	5,570.26	-120.61	0.07	120.61	12.00	12.00	0.00
5,625.00	44.63	179.97	5,588.51	-137.70	0.07	137.70	12.00	12.00	0.00
HATCH									
5,629.82	45.21	179.97	5,591.92	-141.10	0.08	141.10	12.00	12.00	0.00
5,650.00	47.63	179.97	5,605.83	-155.72	0.08	155.72	12.00	12.00	0.00
ISMAY									
5,655.38	48.28	179.97	5,609.43	-159.72	0.09	159.72	12.00	12.00	0.00
5,675.00	50.63	179.97	5,622.18	-174.62	0.09	174.62	12.00	12.00	0.00
5,700.00	53.63	179.97	5,637.53	-194.36	0.10	194.36	12.00	12.00	0.00
HOVENWHEEP									
5,719.63	55.99	179.97	5,648.84	-210.40	0.11	210.40	12.00	12.00	0.00
5,725.00	56.63	179.97	5,651.82	-214.87	0.12	214.87	12.00	12.00	0.00
5,750.00	59.63	179.97	5,665.01	-236.10	0.13	236.10	12.00	12.00	0.00
5,775.00	62.63	179.97	5,677.08	-257.99	0.14	257.99	12.00	12.00	0.00
5,800.00	65.63	179.97	5,687.99	-280.48	0.15	280.48	12.00	12.00	0.00
5,825.00	68.63	179.97	5,697.70	-303.51	0.16	303.51	12.00	12.00	0.00
LOWER ISMAY									
5,842.84	70.78	179.97	5,703.89	-320.25	0.17	320.25	12.00	12.00	0.00
5,850.00	71.63	179.97	5,706.19	-327.02	0.18	327.02	12.00	12.00	0.00
5,875.00	74.63	179.97	5,713.45	-350.94	0.19	350.94	12.00	12.00	0.00
5,900.00	77.63	179.97	5,719.44	-375.21	0.20	375.21	12.00	12.00	0.00
5,925.00	80.63	179.97	5,724.15	-399.76	0.22	399.76	12.00	12.00	0.00
5,950.00	83.63	179.97	5,727.57	-424.52	0.23	424.52	12.00	12.00	0.00
5,975.00	86.63	179.97	5,729.69	-449.43	0.24	449.43	12.00	12.00	0.00
Start 4019.93 hold at 5989.80 MD - 7"									
5,989.80	88.41	179.97	5,730.33	-464.22	0.25	464.22	12.00	12.00	0.00
6,000.00	88.41	179.97	5,730.61	-474.41	0.26	474.41	0.00	0.00	0.00
6,100.00	88.41	179.97	5,733.39	-574.37	0.31	574.37	0.00	0.00	0.00
6,200.00	88.41	179.97	5,736.16	-674.33	0.36	674.34	0.00	0.00	0.00
6,300.00	88.41	179.97	5,738.94	-774.30	0.42	774.30	0.00	0.00	0.00
6,400.00	88.41	179.97	5,741.71	-874.26	0.47	874.26	0.00	0.00	0.00
6,500.00	88.41	179.97	5,744.49	-974.22	0.53	974.22	0.00	0.00	0.00



Database: EDM 2003.21 Single User Db
Company: BILL BARRETT CORP
Project: MONTEZUMA COUNTY, COLORADO
Site: MCAFEE 3H-19-38-16
Well: MCAFEE 3H-19-38-16
Wellbore: MCAFEE 3H-19-38-16
Design: Design #2

Local Co-ordinate Reference: Well MCAFEE 3H-19-38-16
TVD Reference: WELL @ 7095.00ft (Original Well Elev)
MD Reference: WELL @ 7095.00ft (Original Well Elev)
North Reference: True
Survey Calculation Method: Minimum Curvature

Planned Survey

Measured Depth (ft)	Inclination (°)	Azimuth (°)	Vertical Depth (ft)	+N/-S (ft)	+E/-W (ft)	Vertical Section (ft)	Dogleg Rate (°/100ft)	Build Rate (°/100ft)	Turn Rate (°/100ft)
6,600.00	88.41	179.97	5,747.26	-1,074.18	0.58	1,074.18	0.00	0.00	0.00
6,700.00	88.41	179.97	5,750.04	-1,174.14	0.63	1,174.14	0.00	0.00	0.00
6,800.00	88.41	179.97	5,752.81	-1,274.10	0.69	1,274.10	0.00	0.00	0.00
6,900.00	88.41	179.97	5,755.59	-1,374.07	0.74	1,374.07	0.00	0.00	0.00
7,000.00	88.41	179.97	5,758.36	-1,474.03	0.79	1,474.03	0.00	0.00	0.00
7,100.00	88.41	179.97	5,761.14	-1,573.99	0.85	1,573.99	0.00	0.00	0.00
7,200.00	88.41	179.97	5,763.91	-1,673.95	0.90	1,673.95	0.00	0.00	0.00
7,300.00	88.41	179.97	5,766.69	-1,773.91	0.96	1,773.91	0.00	0.00	0.00
7,400.00	88.41	179.97	5,769.46	-1,873.87	1.01	1,873.87	0.00	0.00	0.00
7,500.00	88.41	179.97	5,772.24	-1,973.83	1.06	1,973.83	0.00	0.00	0.00
7,600.00	88.41	179.97	5,775.01	-2,073.80	1.12	2,073.80	0.00	0.00	0.00
7,700.00	88.41	179.97	5,777.79	-2,173.76	1.17	2,173.76	0.00	0.00	0.00
7,800.00	88.41	179.97	5,780.56	-2,273.72	1.23	2,273.72	0.00	0.00	0.00
7,900.00	88.41	179.97	5,783.33	-2,373.68	1.28	2,373.68	0.00	0.00	0.00
8,000.00	88.41	179.97	5,786.11	-2,473.64	1.33	2,473.64	0.00	0.00	0.00
8,100.00	88.41	179.97	5,788.88	-2,573.60	1.39	2,573.60	0.00	0.00	0.00
8,200.00	88.41	179.97	5,791.66	-2,673.56	1.44	2,673.57	0.00	0.00	0.00
8,300.00	88.41	179.97	5,794.43	-2,773.53	1.50	2,773.53	0.00	0.00	0.00
8,400.00	88.41	179.97	5,797.21	-2,873.49	1.55	2,873.49	0.00	0.00	0.00
8,500.00	88.41	179.97	5,799.98	-2,973.45	1.60	2,973.45	0.00	0.00	0.00
8,600.00	88.41	179.97	5,802.76	-3,073.41	1.66	3,073.41	0.00	0.00	0.00
8,700.00	88.41	179.97	5,805.53	-3,173.37	1.71	3,173.37	0.00	0.00	0.00
8,800.00	88.41	179.97	5,808.31	-3,273.33	1.76	3,273.33	0.00	0.00	0.00
8,900.00	88.41	179.97	5,811.08	-3,373.29	1.82	3,373.30	0.00	0.00	0.00
9,000.00	88.41	179.97	5,813.86	-3,473.26	1.87	3,473.26	0.00	0.00	0.00
9,100.00	88.41	179.97	5,816.63	-3,573.22	1.93	3,573.22	0.00	0.00	0.00
9,200.00	88.41	179.97	5,819.41	-3,673.18	1.98	3,673.18	0.00	0.00	0.00
9,300.00	88.41	179.97	5,822.18	-3,773.14	2.03	3,773.14	0.00	0.00	0.00
9,400.00	88.41	179.97	5,824.96	-3,873.10	2.09	3,873.10	0.00	0.00	0.00
9,500.00	88.41	179.97	5,827.73	-3,973.06	2.14	3,973.06	0.00	0.00	0.00
9,600.00	88.41	179.97	5,830.50	-4,073.03	2.20	4,073.03	0.00	0.00	0.00
9,700.00	88.41	179.97	5,833.28	-4,172.99	2.25	4,172.99	0.00	0.00	0.00
9,800.00	88.41	179.97	5,836.05	-4,272.95	2.30	4,272.95	0.00	0.00	0.00
9,900.00	88.41	179.97	5,838.83	-4,372.91	2.36	4,372.91	0.00	0.00	0.00
TD at 10009.73 - PBHL MCAFEE 3H-19-38-16									
10,009.73	88.41	179.97	5,841.87	-4,482.60	2.42	4,482.60	0.00	0.00	0.00

Wellbore Targets

Target Name	Dip Angle (°)	Dip Dir. (°)	TVD (ft)	+N/-S (ft)	+E/-W (ft)	Northing (ft)	Easting (ft)	Latitude	Longitude
- hit/miss target									
- Shape									
PBHL MCAFEE 3H-1:	0.00	0.00	5,841.87	-4,482.60	2.42	330,258.77	1,084,467.63	37° 31' 52.290 N	108° 39' 28.030 W
- plan hits target center									
- Point									
	2,000.00	2,000.00	9 5/8"					9-5/8	12-1/4
	5,989.80	5,730.33	7"					7	8-3/4



Database: EDM 2003.21 Single User Db
 Company: BILL BARRETT CORP
 Project: MONTEZUMA COUNTY, COLORADO
 Site: MCAFEE 3H-19-38-16
 Well: MCAFEE 3H-19-38-16
 Wellbore: MCAFEE 3H-19-38-16
 Design: Design #2

Local Co-ordinate Reference: Well MCAFEE 3H-19-38-16
 TVD Reference: WELL @ 7095.00ft (Original Well Elev)
 MD Reference: WELL @ 7095.00ft (Original Well Elev)
 North Reference: True
 Survey Calculation Method: Minimum Curvature

Formations

Measured Depth (ft)	Vertical Depth (ft)	Name	Lithology	Dip (°)	Dip Direction (°)
1,311.00	1,311.00	ENTRADA		1.59	179.97
2,051.00	2,051.00	CHINLE		1.59	179.97
4,217.00	4,217.00	HERMOSA		1.59	179.97
5,629.82	5,588.00	HATCH		1.59	179.97
5,655.38	5,605.00	ISMAY		1.59	179.97
5,719.63	5,643.00	HOVENWHEEP		1.59	179.97
5,842.84	5,695.00	LOWER ISMAY		1.59	179.97
	5,787.00	GOTHIC		1.59	179.97

Plan Annotations

Measured Depth (ft)	Vertical Depth (ft)	Local Coordinates		Comment
		+N/-S (ft)	+E/-W (ft)	
5,253.05	5,253.05	0.00	0.00	Start Build 12.00
5,989.80	5,730.33	-464.22	0.25	Start 4019.93 hold at 5989.80 MD
10,009.73	5,841.87	-4,482.60	2.42	TD at 10009.73