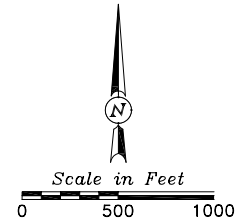
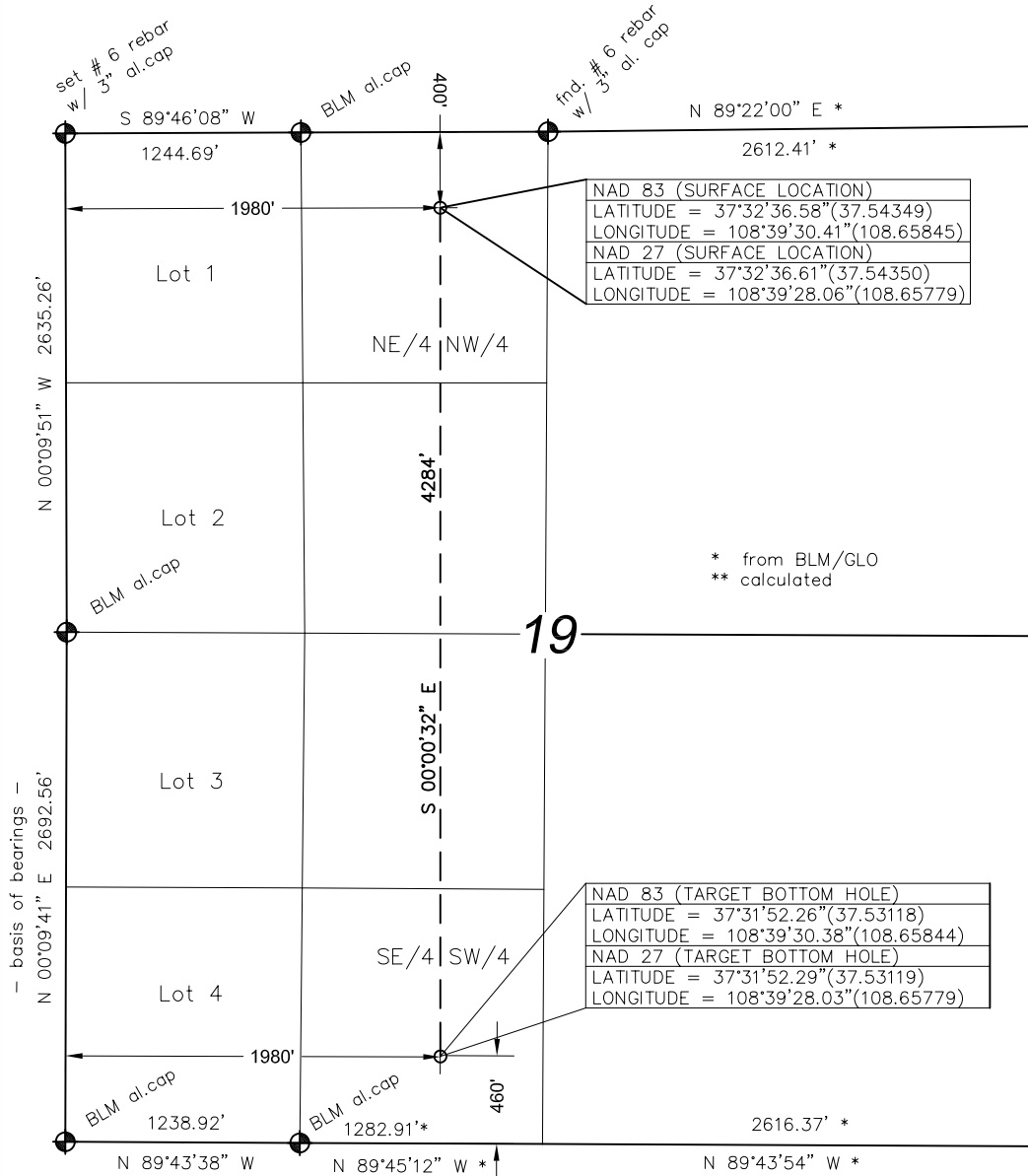


Well Location Plat



Standard monument

Bearings from GPS
true north

Lat/Lon from GPS observations
PDOP: 3.3

No improvements within 200'
nearest public road: 380'

Land use: dry land farming

Distances/dimensions are
perpendicular to section lines

Bill Barrett Corporation McAfee #3H-19-38-16

400'FNL & 1980 FWL (surface location)

Section 19, T38N, R16W, NMPM

Montezuma County, Colorado

7079' grd. el. (NAVD88)

660'FSL & 1980'FWL (bottom hole)

Section 19, T38N, R16W, NMPM

Montezuma County, Colorado

Date of Survey: 11/04/08

Date of Plat: 2/20/09



KNOW ALL MEN BY THESE PRESENTS that I, GERALD G. HUDDLESTON, do hereby certify that this plat was prepared from field notes of an actual survey made by me or under my supervision and that the same is true and accurate to the best of my knowledge and belief.