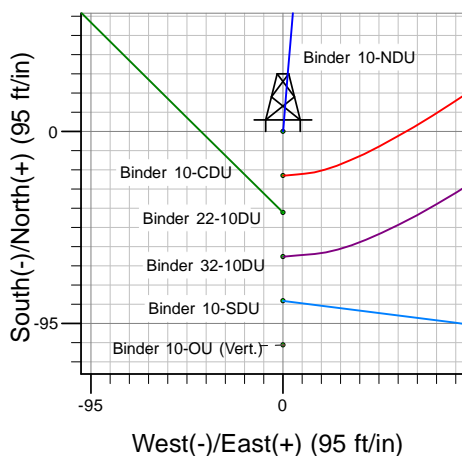
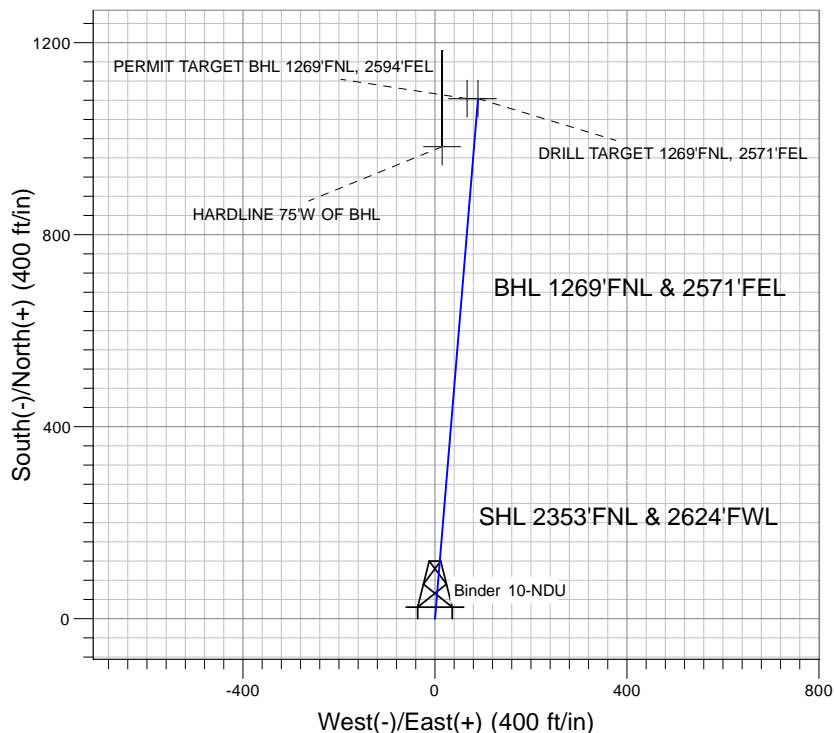
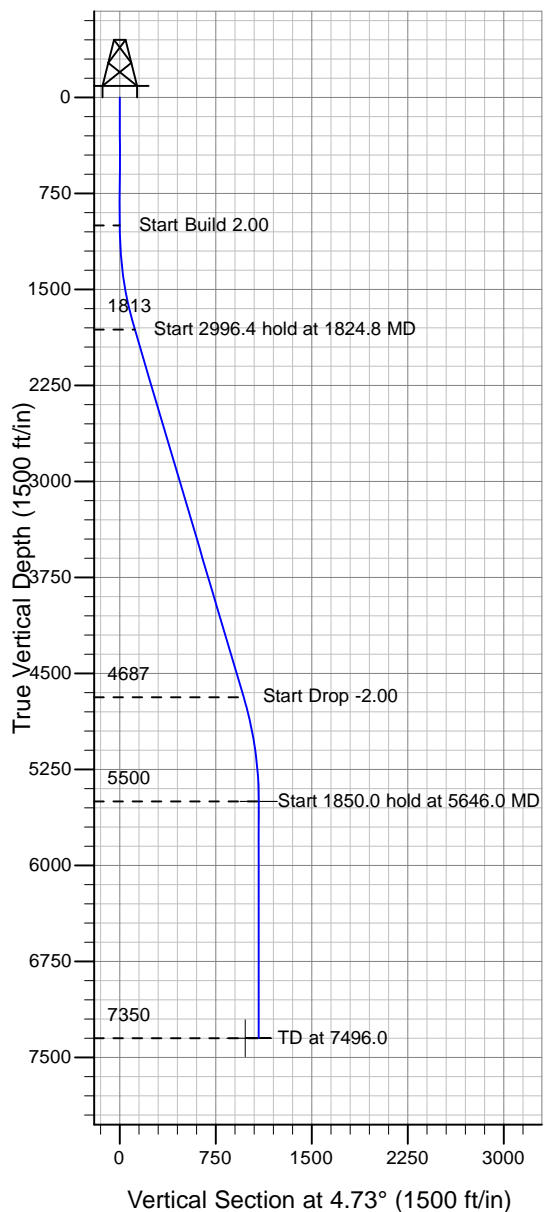


Well Name: Binder 10-NDU

Surface Location: Binder 10-NDU Pad Sec.10-T4N-R67W
 North American Datum 1983 , US State Plane 1983 , Colorado Northern Zone
 Ground Elevation: 4780.0

+N/-S+E/-W Northing Easting Latitude Longitude Slot
 0.0 0.0 1362813.50 3173642.72 40° 19' 39.540 N 104° 52' 37.884 W
 Original Well Elev WELL @ 4793.0ft (Original Well Elev)

PETROLEUM DEVELOPMENT CORP Weld County CO



Binder 10-NDU Pad Sec.10-T4N-R67W
 Binder 10-NDU
 Plan #1 (10-21-09)
 10:59, October 22 2009



Azimuths to True North
 Magnetic North: 9.10°

Magnetic Field
 Strength: 53274.5snT
 Dip Angle: 67.04°
 Date: 10/21/2009
 Model: IGRF200510

WELLBORE TARGET DETAILS (LAT/LONG)

Name	TVD	+N/-S	+E/-W	Latitude	Longitude	Shape
DRILL TARGET 1269'FNL, 2571'FEL	5500.0	1083.0	89.6	40° 19' 50.242 N	104° 52' 36.727 W	Point
PERMIT TARGET BHL 1269'FNL, 2594'FEL	5500.0	1083.0	66.6	40° 19' 50.241 N	104° 52' 37.025 W	Point
HARDLINE 75'W OF BHL	7350.0	983.0	14.6	40° 19' 49.254 N	104° 52' 37.695 W	Polygon

SECTION DETAILS

Sec	MD	Inc	Azi	TVD	+N/-S	+E/-W	DLeg	TFace	VSec	Target
1	0.0	0.00	0.00	0.0	0.0	0.0	0.00	0.00	0.0	
2	1000.0	0.00	0.00	1000.0	0.0	0.0	0.00	0.00	0.0	
3	1824.8	16.50	4.73	1813.5	117.5	9.7	2.00	4.73	117.9	
4	4821.2	16.50	4.73	4686.5	965.5	79.9	0.00	0.00	968.8	
5	5646.0	0.00	0.00	5500.0	1083.0	89.6	2.00	180.00	1086.7	DRILL TARGET 1269'FNL, 2571'FEL
6	7496.0	0.00	0.00	7350.0	1083.0	89.6	0.00	0.00	1086.7	