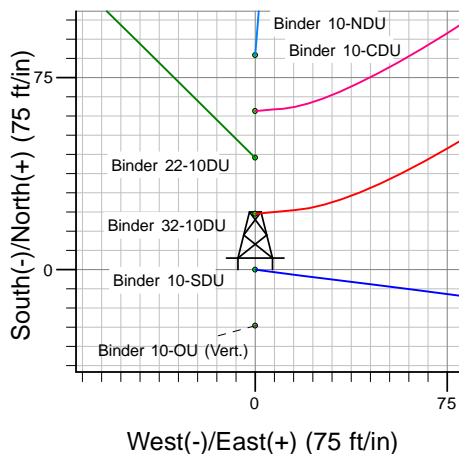
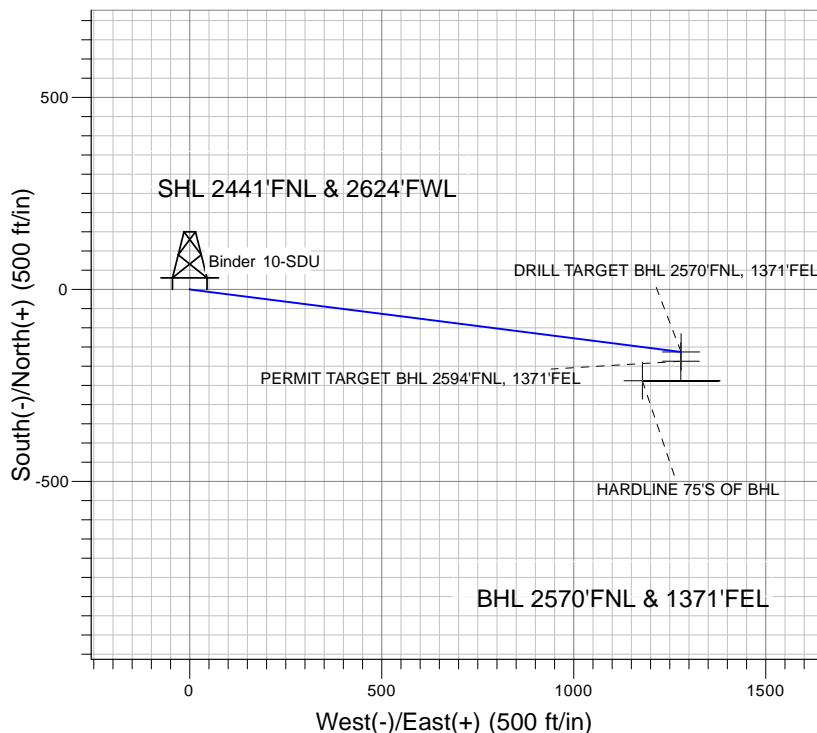
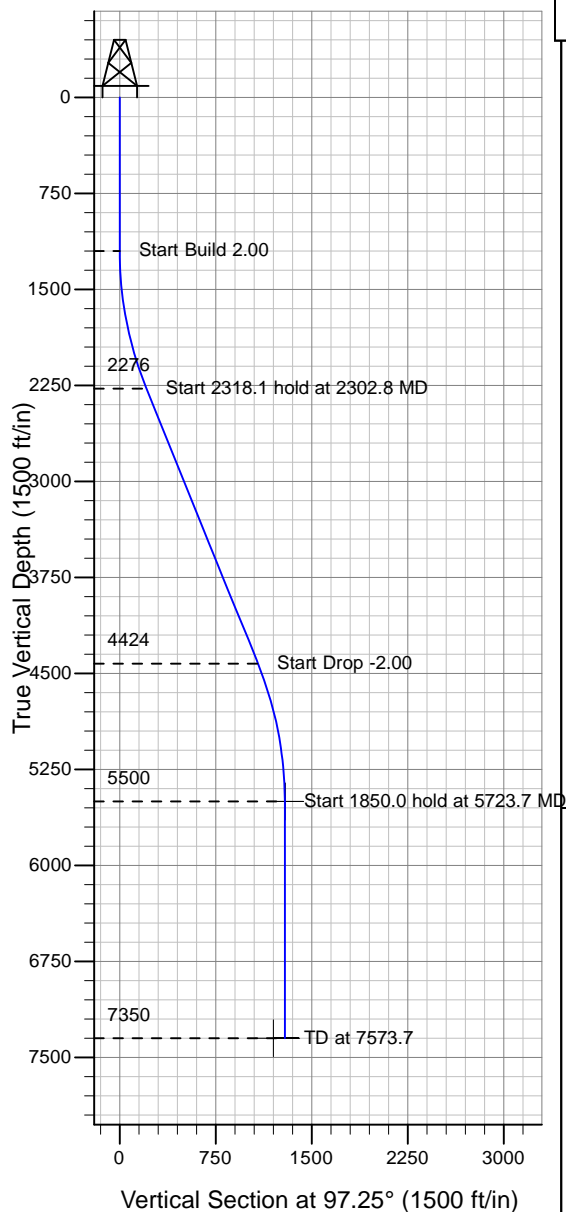


### Well Name: Binder 10-SDU

Surface Location: Binder 10-NDU Pad Sec.10-T4N-R67W  
 North American Datum 1983 , US State Plane 1983 , Colorado Northern Zone  
 Ground Elevation: 4780.0

+N/-S+E/-W Northing Easting Latitude Longitude Slot  
 0.0 0.01362729.71 3173643.31 40° 19' 38.712 N 104° 52' 37.884 W  
 Original Well Elev WELL @ 4793.0ft (Original Well Elev)

### PETROLEUM DEVELOPMENT CORP Weld County CO



Binder 10-NDU Pad Sec.10-T4N-R67W  
 Binder 10-SDU  
 Plan #1 (10-21-09)  
 10:09, October 26 2009



Azimuths to True North  
 Magnetic North: 9.10°  
 Magnetic Field  
 Strength: 53274.4snT  
 Dip Angle: 67.04°  
 Date: 10/21/2009  
 Model: IGRF200510

#### WELLBORE TARGET DETAILS (LAT/LONG)

Name	TVD	+N/-S	+E/-W	Latitude	Longitude	Shape
DRILL TARGET BHL 2570'FNL, 1371'FEL	5500.0	-162.7	1279.5	40° 19' 37.104 N	104° 52' 21.364 W	Point
PERMIT TARGET BHL 2594'FNL, 1371'FEL	5500.0	-186.7	1279.5	40° 19' 36.867 N	104° 52' 21.364 W	Point
HARDLINE 75'S OF BHL	7350.0	-237.7	1179.5	40° 19' 36.363 N	104° 52' 22.655 W	Polygon

#### SECTION DETAILS

Sec	MD	Inc	Azi	TVD	+N/-S	+E/-W	DLeg	TFace	VSec	Target
1	0.0	0.00	0.00	0.0	0.0	0.0	0.00	0.00	0.0	
2	1200.0	0.00	0.00	1200.0	0.0	0.0	0.00	0.00	0.0	
3	2302.8	22.06	97.25	2275.8	-26.4	208.0	2.00	97.25	209.7	
4	4620.9	22.06	97.25	4424.2	-136.3	1071.5	0.00	0.00	1080.1	
5	5723.7	0.00	0.00	5500.0	-162.7	1279.5	2.00	180.00	1289.8	DRILL TARGET BHL 2570'FNL, 1371'FEL
6	7573.7	0.00	0.00	7350.0	-162.7	1279.5	0.00	0.00	1289.8	