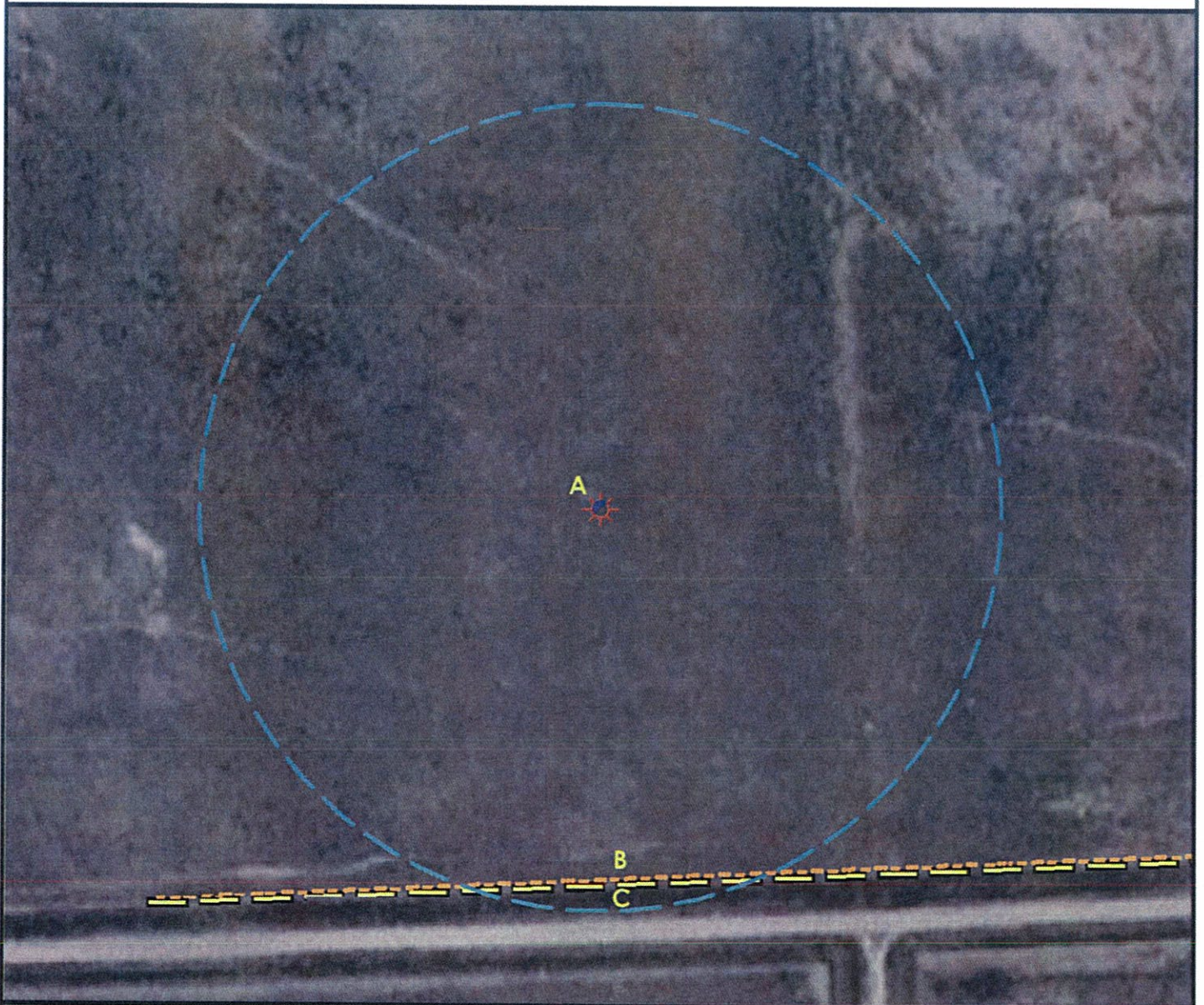


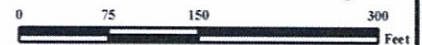
# Location Drawing



A. Proposed well BOWMAN 12-15.

B. Fence is 368' S.

C. Power Line is 375' S.



## Legend

- |                      |                       |
|----------------------|-----------------------|
| Proposed Well        | Building/Residence    |
| Existing Well        | Oil & Gas Equipment   |
| Water Well           | Water Body            |
| Pedestal             | Utility Box           |
| CattleGuard/Gate     | Railroad              |
| Bridge               | Fence                 |
| ECD                  | Overhead Power Line   |
| 400' Radius          | Pipeline              |
| Facilities Enclosure | Access Road           |
|                      | Ditch/Canal           |
|                      | Concrete Walled Ditch |

## 400ft Radius Map

## BOWMAN 12-15

Surface Location: T2S R45W S12

Description of surface uses : Improved Pasture

Field Date: 11/02/2009  
 Drawing Date: 11/08/2009  
 Drafter: DMM  
 Checked By: MPS

Aerial Photo supplied by NAIP - 2005

Prepared for:  
 ROSETTA RESOURCES  
 OPERATING LP  
 717 Texas Avenue, Ste. 2800  
 Houston, TX 77002



Use our resources to find yours!  
[www.petro-fs.com](http://www.petro-fs.com)

1801 W. 13th Ave Denver, CO 80204 (303) 928-7128	111 E. Third Street Suite 207 Rifle, CO 81650 (970) 625-4740
--	---