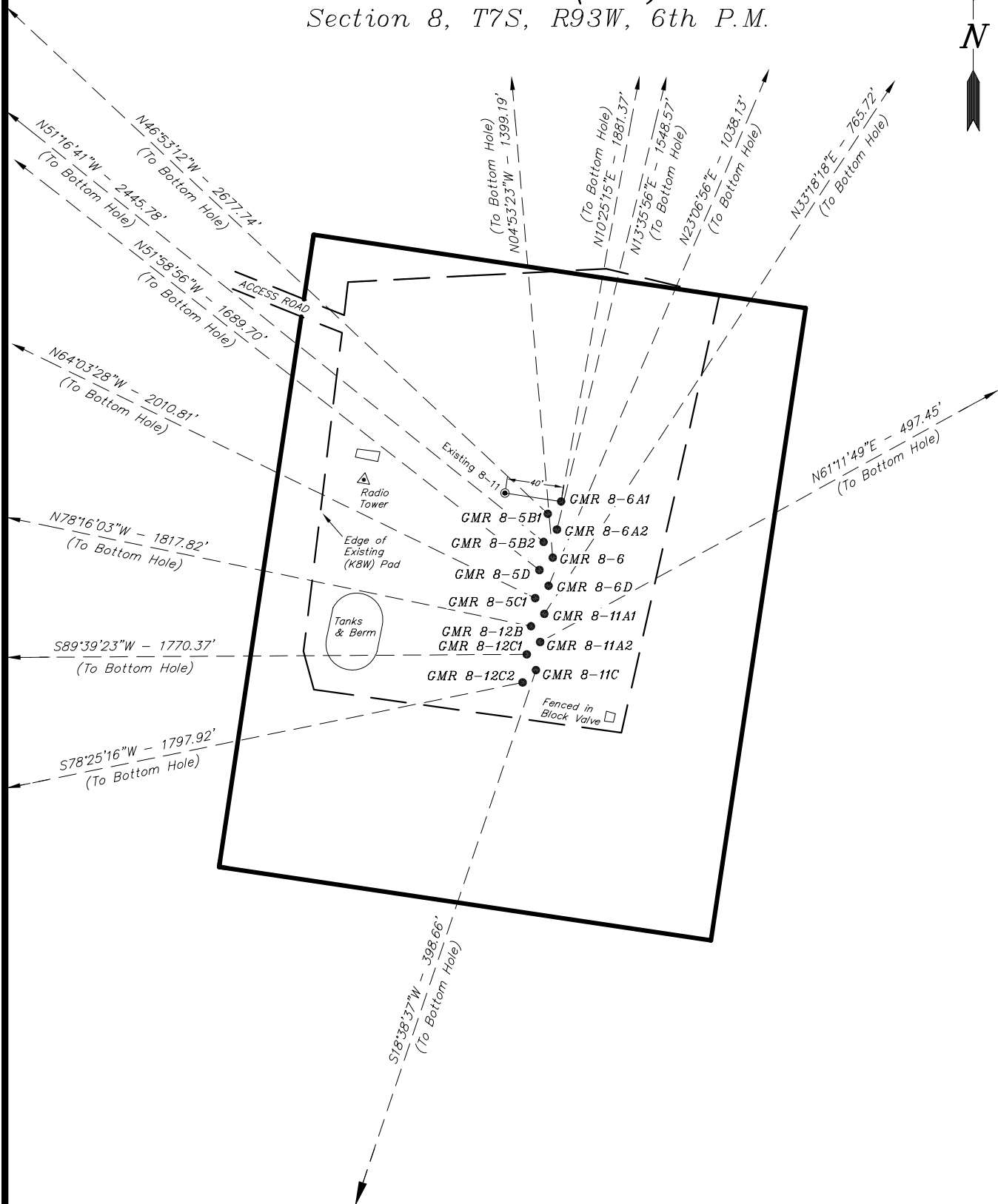


ENCANA OIL & GAS (USA) INC

DETAILED MULTI WELL PLAN WELL PAD INTERFERENCE PLAT WELL PAD (K8W) Section 8, T7S, R93W, 6th P.M.



SURVEYED BY: D.S.	DATE SURVEYED: 09-28-09
DRAWN BY: M.W.	DATE DRAWN: 09-28-09
SCALE: 1" = 100'	REVISED: F.T.M. 10-27-09

Tri State
Land Surveying, Inc.
180 NORTH VERNAL AVE. VERNAL, UTAH 84078
(435) 781-2501

SHEET
3a
OF 11

ENCANA OIL & GAS (USA) INC

DETAILED MULTI WELL PLAN WELL PAD INTERFERENCE PLAT

WELL PAD (K8W)

Section 8, T7S, R93W, 6th P.M.

TOP HOLE FOOTAGES

GMR 8-5B1
1958' FSL & 1927' FWL
GMR 8-5B2
1939' FSL & 1923' FWL
GMR 8-5D
1919' FSL & 1920' FWL
GMR 8-5C1
1899' FSL & 1971' FWL
GMR 8-12B
1879' FSL & 1914' FWL
GMR 8-12C1
1859' FSL & 1910' FWL
GMR 8-12C2
1840' FSL & 1907' FWL
GMR 8-6A1
1967' FSL & 1936' FWL
GMR 8-6A2
1947' FSL & 1933' FWL
GMR 8-6
1928' FSL & 1930' FWL

TOP HOLE FOOTAGES

GMR 8-6D
1908' FSL & 1926' FWL
GMR 8-11A1
1888' FSL & 1923' FWL
GMR 8-11A2
1868' FSL & 1920' FWL
GMR 8-11C
1848' FSL & 1917' FWL

BOTTOM HOLE FOOTAGES

GMR 8-5B1
1460' FNL & 140' FWL
GMR 8-5B2
1780' FNL & 140' FWL
GMR 8-5D
2290' FNL & 640' FWL
GMR 8-5C1
2470' FNL & 140' FWL

BOTTOM HOLE FOOTAGES

GMR 8-12B
2240' FSL & 140' FWL
GMR 8-12C1
1840' FSL & 140' FWL
GMR 8-12C2
1470' FSL & 140' FWL
GMR 8-6A1
1435' FNL & 2830' FEL
GMR 8-6A2
1800' FNL & 2820' FEL
GMR 8-6
1930' FNL & 3310' FEL
GMR 8-6D
2390' FNL & 2800' FEL
GMR 8-11A1
2530' FSL & 2800' FEL
GMR 8-11A2
2110' FSL & 2800' FEL
GMR 8-11C
1470' FSL & 3385' FEL

EXISTING LATITUDE & LONGITUDE Surface position of Wells (NAD 27)

WELL	LATITUDE	LONGITUDE
8-11	39° 27' 29.66"	107° 47' 59.99"

RELATIVE COORDINATES From top hole to bottom hole

WELL	NORTH	EAST	WELL	NORTH	EAST
8-5B1	1830'	-1955'	8-6A1	1850'	340'
8-5B2	1530'	-1908'	8-6A2	1505'	364'
8-5D	1041'	-1331'	8-6	1394'	-119'
8-5C1	880'	-1808'	8-6D	955'	408'
8-12B	370'	-1780'	8-11A1	640'	420'
8-12C1	-11'	-1770'	8-11A2	240'	436'
8-12C2	-361'	-1761'	8-11C	-378'	-127'

LATITUDE & LONGITUDE Surface position of Wells (NAD 83)

WELL	LATITUDE	LONGITUDE
8-5B1	39° 27' 29.51"	107° 47' 59.61"
8-5B2	39° 27' 29.32"	107° 47' 59.65"
8-5D	39° 27' 29.12"	107° 47' 59.69"
8-5C1	39° 27' 28.93"	107° 47' 59.72"
8-12B	39° 27' 28.73"	107° 47' 59.76"
8-12C1	39° 27' 28.54"	107° 47' 59.80"
8-12C2	39° 27' 28.34"	107° 47' 59.84"
8-6A1	39° 27' 29.60"	107° 47' 59.49"
8-6A2	39° 27' 29.40"	107° 47' 59.53"
8-6	39° 27' 29.21"	107° 47' 59.57"
8-6D	39° 27' 29.01"	107° 47' 59.60"
8-11A1	39° 27' 28.82"	107° 47' 59.64"
8-11A2	39° 27' 28.62"	107° 47' 59.68"
8-11C	39° 27' 28.43"	107° 47' 59.72"

LATITUDE & LONGITUDE Bottom hole position of Wells (NAD 83)

WELL	LATITUDE	LONGITUDE
8-5B1	39° 27' 47.59"	107° 48' 24.53"
8-5B2	39° 27' 44.43"	107° 48' 23.97"
8-5D	39° 27' 39.40"	107° 48' 16.66"
8-5C1	39° 27' 37.61"	107° 48' 22.77"
8-12B	39° 27' 32.38"	107° 48' 22.45"
8-12C1	39° 27' 28.43"	107° 48' 22.36"
8-12C2	39° 27' 24.77"	107° 48' 22.28"
8-6A1	39° 27' 47.88"	107° 47' 55.16"
8-6A2	39° 27' 44.28"	107° 47' 54.89"
8-6	39° 27' 42.98"	107° 48' 01.09"
8-6D	39° 27' 38.45"	107° 47' 54.41"
8-11A1	39° 27' 35.14"	107° 47' 54.28"
8-11A2	39° 27' 30.99"	107° 47' 54.12"
8-11C	39° 27' 24.69"	107° 48' 01.34"

SURVEYED BY: D.S. DATE SURVEYED: 09-28-09
DRAWN BY: M.W. DATE DRAWN: 09-28-09
SCALE: 1" = 100' REVISED: F.T.M. 10-27-09

Tri State
Land Surveying, Inc.
180 NORTH VERNAL AVE. VERNAL, UTAH 84078
(435) 781-2501

SHEET
3b
OF 11