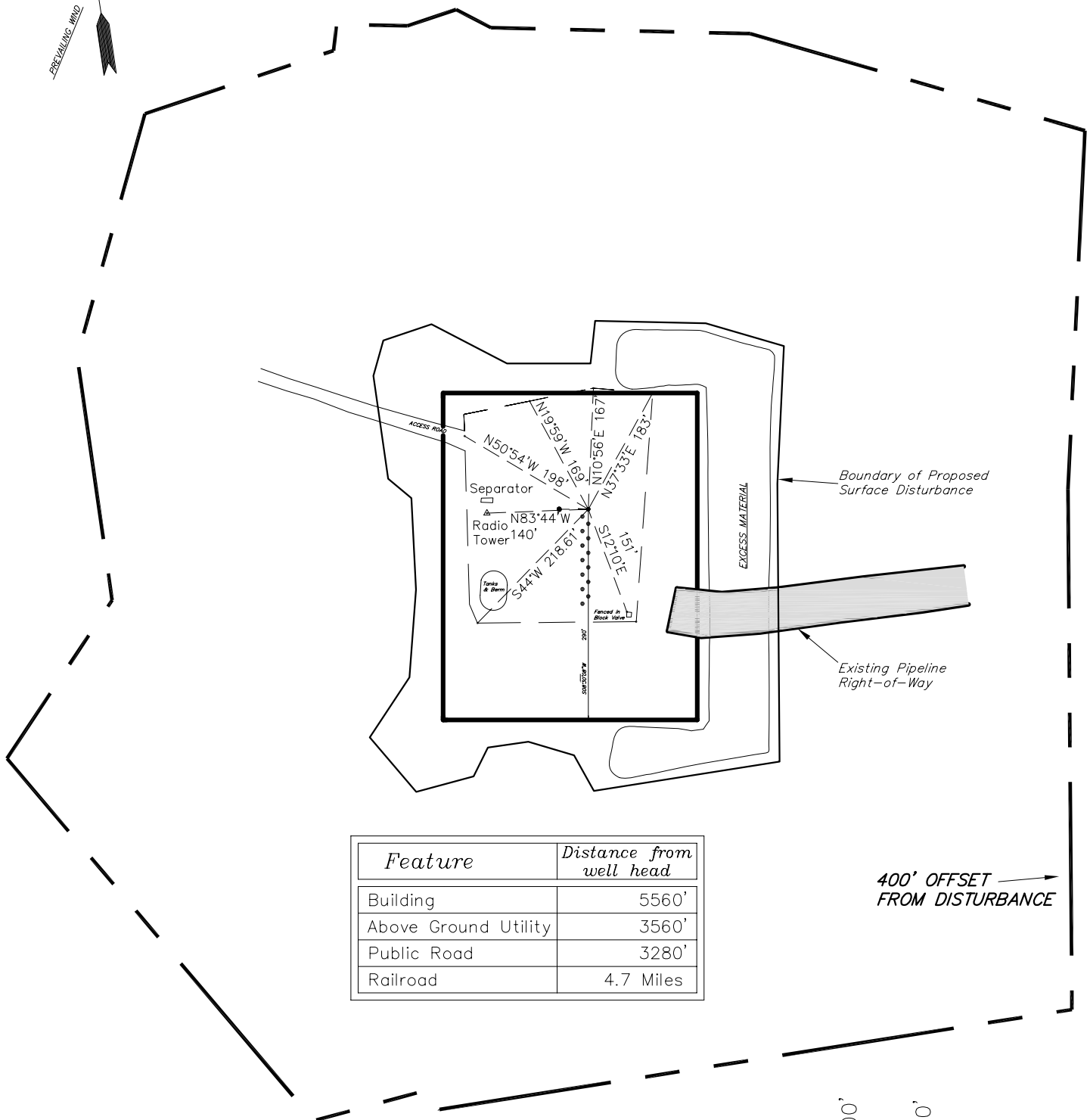


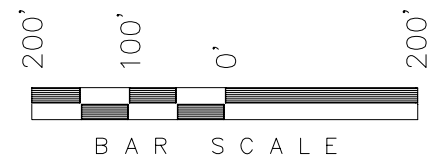
ENCANA OIL & GAS (USA) INC

LOCATION DRAWING ADDENDUM TO LEGAL PLATS FOR WELL PAD (K8W) Section 8, T7S, R93W, 6th P.M.



Feature	Distance from well head
Building	5560'
Above Ground Utility	3560'
Public Road	3280'
Railroad	4.7 Miles

SURFACE USE NOTE:
Surface use of the well site is
grazing. Vegetation consists mainly
of sage brush and native grasses.



SURVEYED BY: D.S. DATE SURVEYED: 09-28-09
DRAWN BY: M.W. DATE DRAWN: 10-08-09
SCALE: 1" = 200' REVISED:

Tri State
Land Surveying, Inc.
180 NORTH VERNAL AVE. VERNAL, UTAH 84078

(435) 781-2501

SHEET
20
OF 11