

Liberty Pipeline System

EnCana's proposed Liberty gathering system will be constructed entirely on surface lands owned by EnCana and will consist of a three-phase gathering process. The 3-Phase gathering process will involve collecting the unprocessed natural gas at the well heads and transporting the unprocessed natural gas to a CDP facility. The CDP will be located at a site lower in elevation from the proposed well pads to allow gravity to efficiently transport the unprocessed natural gas from the well pads to the CDP facility. The system will gather unprocessed natural gas from the well pad sites and transport the natural gas and produced water through one common pipeline (3-Phase) to the proposed CDP facilities. Separation of the natural gas and produced water will occur at the CDP facilities. The CDP facility will be constructed on a 2.8 acre graded pad. The 3-Phase line will enter into a vessel at the CDP site where the Natural Gas, Condensate and Water will be separated. From this vessel the Natural Gas will flow through a meter run and down our Dry Gas pipeline. The condensate will flow through a LACT system and will be pumped into our Liquids line. The water will enter our water skid and either be pumped to the J25 Frac Pad or into our Liquids line. The proposed natural gas and produced water/condensate trunk pipelines leaving the CDP's will connect into existing EnCana pipeline systems for delivery of the natural gas and produced water to the existing Middle Fork Compressor Station and the Middle Fork Water Storage Recycling Facility located in Section 30, Township 5 South, Range 96 West.

The additional water line and frac line will be used to move water to and from the Middle Fork Water Storage Recycling Facility for drilling and completion activities. The gas lift lines will be used to aid in the production of natural gas from the well bore.

In order to minimize environmental impacts, EnCana is planning on installing multiple pipelines within the same right-of-ways and trenches. Figure D1 shows the proposed pipeline routes as well as the number, size and types of pipelines that will be installed.

The proposed gathering system and trunk line will contain 30,796 feet of pipeline right-of-way. The maximum right-of-way width will be 120 feet but will be minimized when possible. The right-of-way will be minimized by utilizing existing roads and existing pipeline right-of-ways when possible and when fewer pipelines will be installed in the same trench and when surrounding topography is flatter and does not require significant side cuts.

The Liberty Trunk pipeline route will run from the J25 496 CDP to a single tie-in point with existing pipelines located in the NW ¼ of the NE ¼ of Section 3, Township 5 South, Range 96 West. Within this route there will be an up to 12-inch liquid (water/condensate), an up to 16-inch water line and an up to 20-inch gas pipeline. An additional up to 10-inch gas lift pipeline will be placed within the same trench between the F26 496 tie-in and the J25 496 CDP. The F25 496 well connect will enter the trunk line right-of-way at the F25 496 pad and will consist of an up to 12-inch 3-Phase line and an up to 16-inch frac water line.

From the J25 496 CDP to the proposed J25 496 frac pit there will be an up to 16-inch water and up to 16-inch frac line and an up to 10-inch gas lift line. The gas lift and frac water line will continue from the J25 496 frac pit to the intersection with the B36 496 tee following the existing road with just a couple of minor road reroutes. From the B36 tee these lines will continue to the B36 496 and M30 496 pads.

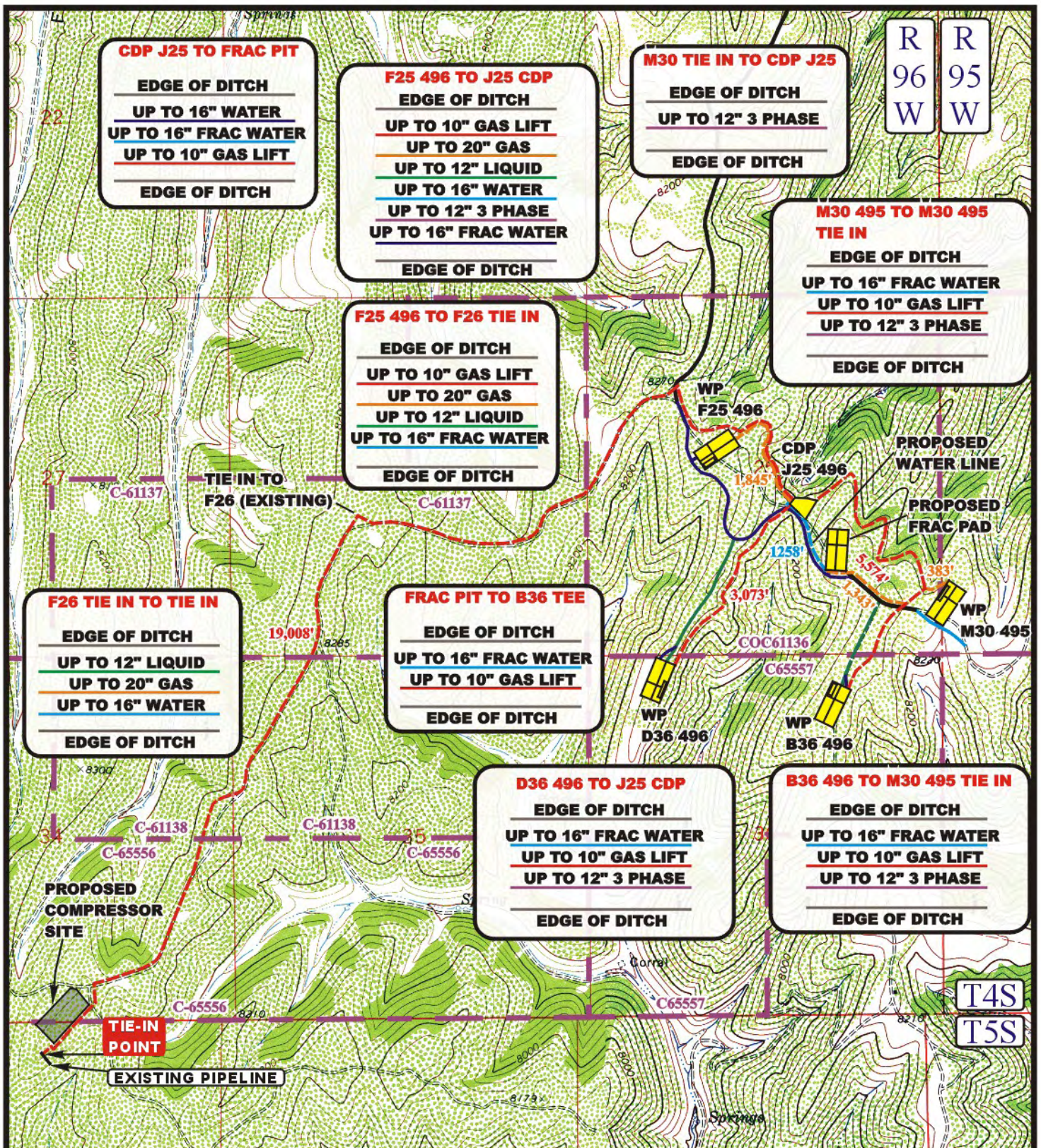
The B36 496 well connect will tie into the J25 496 CDP. This will consist of an up to 12-inch 3-Phase line along with the up to 16-inch frac water and up to 10-inch gas lift from the B36 496 well pad to the M30 495 Tie-in. From the M30 Tie-in to the J25 496 CDP there will just be an up to 12-inch 3-Phase line (combined 3-phase well connect for the M30 and B36).

From the M30 495, an up to 12-inch 3-Phase line will connect with the B36 496 well connect. The up to 16-inch frac water and up to 10-inch gas lift pipelines will follow the M30 495 3-Phase line to the pad.

The D36 496 to the J25 496 CDP pipeline route will contain an up to 16-inch frac water line, an up to 10-inch gas lift line and an up to 12-inch 3-Phase line.

Liberty Pipelines-Story Gulch

Pipeline Route	Surface Owner
F25 496 to J25 496 CDP	
SE,NW and SW,NE and NW,SE of Section 25, T4S, R96W	EnCana
M30 495 to B36 496 tie-in	
SW,SW Section 30 T4S, R 95W	EnCana
SE,SE of Section 25 T4S, R96W	EnCana
B36 496 to J25 496 CDP	
N1/2, NE of Section 36	EnCana
SE,SE and N1/2,SE of Section 25, T4S, R96W	
D36 496 to J25 496 CDP	
NE,NW of Section 36 T4S, R96W	EnCana
E1/2,SW and NW,SE of Section 25 T4S, R96W	EnCana
J25 CDP to Tie in point (Liberty Trunk Line)	
NW,SE and SW,NE and S1/2,NW and NW,SW of Section 25, T4S, R96W	EnCana
N1/2,SE and NE,SW and S1/2,SW of Section 26, T4S, R96W	EnCana
W1/2,NW of Section 35, T4S, R96W	EnCana
SE,NE and W1/2,SE and SW,SE of Section 34, T4S, R96W	EnCana
NW,NE of Section 3, T5S, R 96W	EnCana
J25 CDP to the J25 Frac Pit	
NW,SE of Section 25, T4S, R96W	EnCana
J25 Frac Pit to B36 496 tee	
NW,SE and S1/2,SE of Section 25, T4S, R96W	EnCana
J25 496CDP Pad	
NW,SE of Section 25, T4S, R96W	EnCana
J25 496 Frac Pad	
NW,SE of Section 25, T4S, R96W	EnCana



LEGEND:

- EXISTING PIPELINE
- PROPOSED PIPELINE
- PROPOSED ACCESS



Uintah Engineering & Land Surveying
 85 South 200 East Vernal, Utah 84078
 (435) 789-1017 * FAX (435) 789-1813



EnCana OIL & GAS (USA) INC.

CDP GATHERING SYSTEM
 SECTION 30, T4S, R95W, 6th P.M.,
 SECTIONS 25, 26, 34, 35 & 36, T4S, R96W, 6th P.M.,
 SECTION 3, T5S, R96W, 6th P.M. SHEET 8 of 8

TOPOGRAPHIC
 MAP

8 12 09
 MONTH DAY YEAR

SCALE: 1" = 2000' DRAWN BY: J.L.G. REVISED: 11-5-09

D1
 TOPO