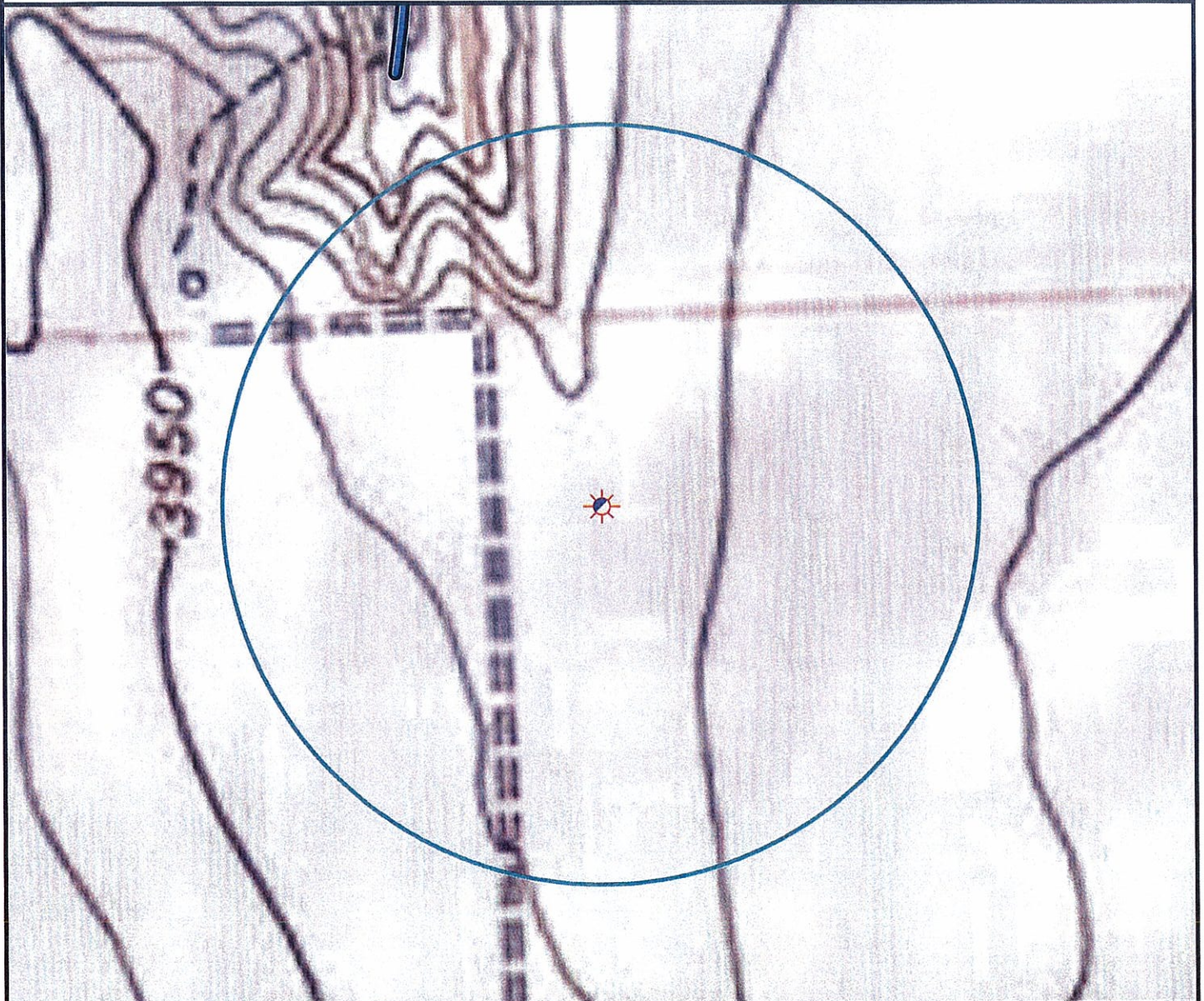
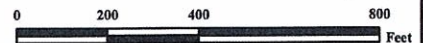


Hydrology Map



There are no surface waters within a 1000' radius of the Oil & Gas location.



Legend

- | | | | |
|--|----------------------|--|-----------------------|
| | Proposed Well | | Building/Residence |
| | Existing Well | | Oil & Gas Equipment |
| | Water Well | | Water Body |
| | Pedestal | | Utility Box |
| | CattleGuard/Gate | | Railroad |
| | Bridge | | Fence |
| | ECD | | Overhead Power Line |
| | 1000' Radius | | Pipeline |
| | Facilities Enclosure | | Access Road |
| | | | Ditch/Canal |
| | | | Concrete Walled Ditch |

1000ft Radius Map of Surface Water and Riparian Areas

FIX 32-12

Surface Location: T1N R44W S32

Field Date: 11/02/2009
 Drawing Date: 11/16/2009
 Drafter: CGR
 Checked By: MPS

Prepared for:
**ROSETTA RESOURCES
 OPERATING LP**



Use our resources to find yours!
www.petro-fs.com

1801 W. 13th Ave Suite 207
 Denver, CO 80204
 (303) 928-7128
 Rifle, CO 81650
 (970) 625-4740