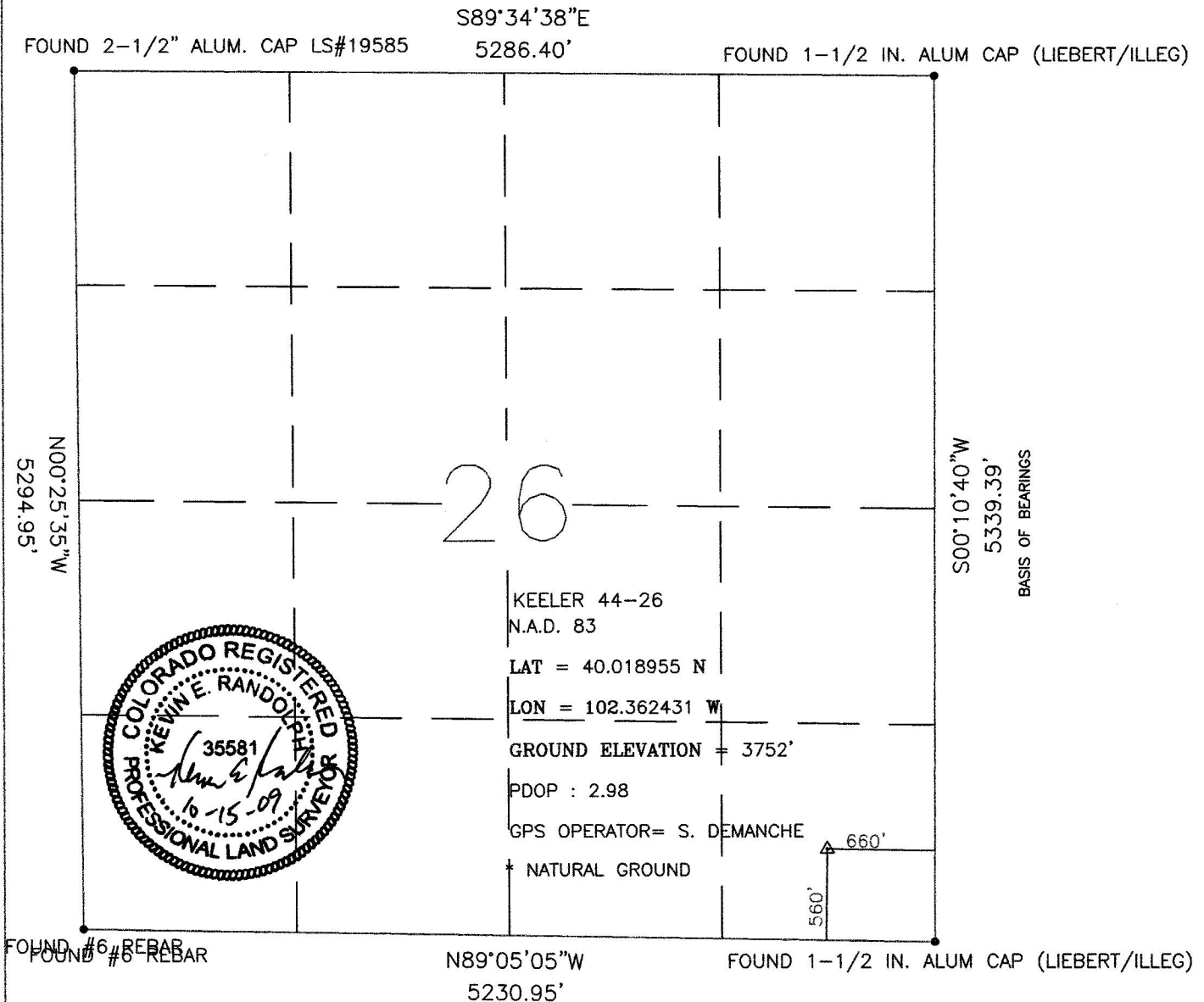


WELL LOCATION CERTIFICATE: KEELER 44-26
SECTION 26, TOWNSHIP 1 NORTH, RANGE 45 WEST, 6TH P.M.
YUMA COUNTY, COLORADO



I HEREBY STATETO PETROLEUM DEVELOPMENT CORP THAT THIS WELL LOCATION CERTIFICATE INDICATES THE WELL
KEELER 44-26 TO BE LOCATED 560' FSL AND 660' FEL, SEC 26, T1N, R45W, 6TH P.M. YUMA COUNTY, STATE
OF COLORADO

BASIS OF BEARINGS AS SHOWN ABOVE

GROUND ELEVATION SHOWN IS APPROXIMATE AND IS BASED ON AN OBSERVED GPS ELEVATION (NAVD 1988 DATUM)

LAT AND LON SHOWN ARE BASED ON AN OBSERVED GPS OBSERVATION (NAD 1983/92) WITH A PDOP VALUE LESS
THAN SIX

ALL DISTANCES ARE FIELD MEASURED UNLESS OTHERWISE NOTIFIED

DISTANCES TO WELL ARE PERPENDICULAR TO SECTION LINES

FIELD DATE: 10/14/09

DRAWN DATE: 10/15/09

DRAWN BY: KER

THIS IS NOT A MONUMENTED BOUNDARY SURVEY, IT IS A DRAWING INTENDED
TO DEPICT WELL LOCATION IN REFERENCE TO SECTION LINES

