

DALEY LAND SURVEYING, INC.

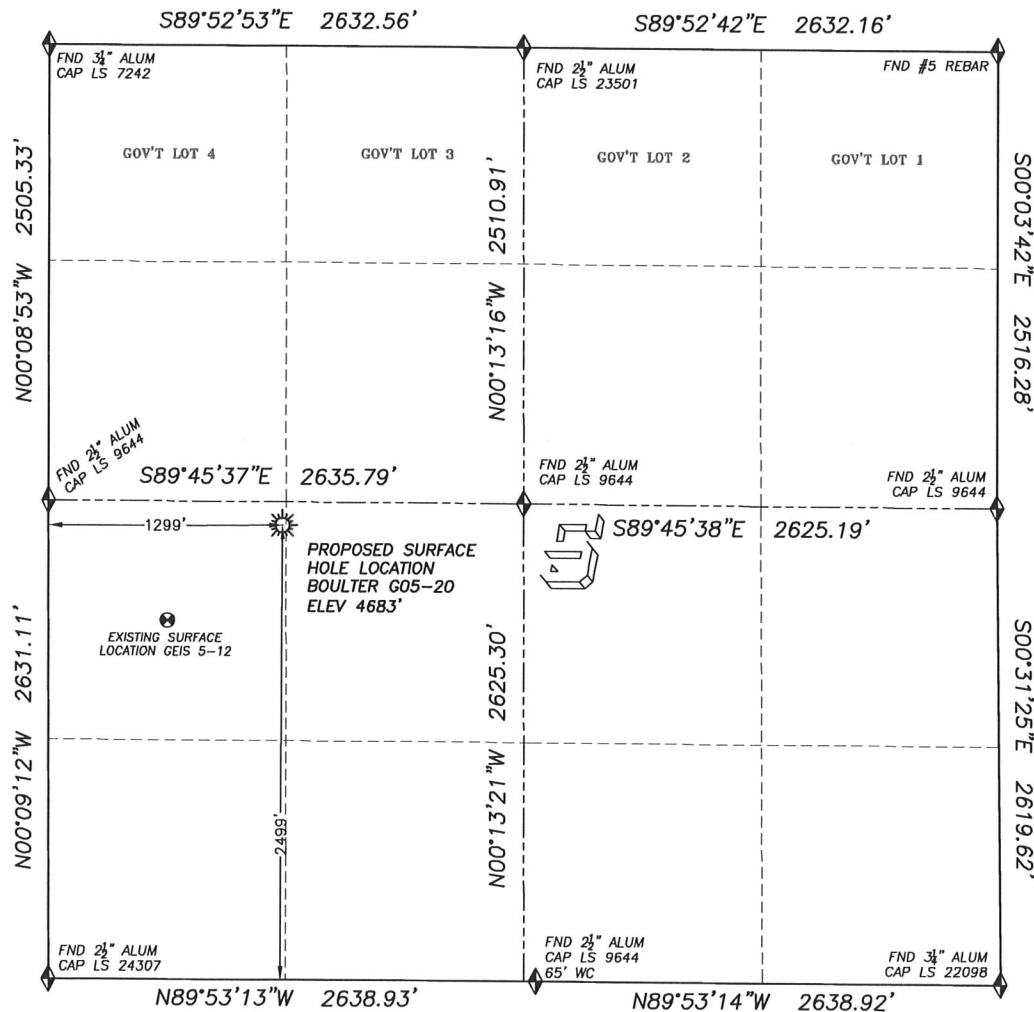
PARKER, CO. 80134

303 953 9841

WELL LOCATION CERTIFICATE

BOULTER G05-20

SECTION 5, TOWNSHIP 4 NORTH, RANGE 65 WEST OF THE 6TH PRINCIPLE MERIDIAN

**LEGEND**

- FOUND MONUMENT AS DESCRIBED
- PROPOSED WELL
- EXISTING WELL
- BOTTOM HOLE
- ABANDONED WELL

NAD 83 LATITUDE AND LONGITUDE**BOULTER G05-20 SURFACE HOLE:**

LATITUDE: N40.34125°
 LONGITUDE: W104.69192°
 ELEVATION: 4683'
 PDOP: 2.7
 2499' FSL, 1299' FWL

NEAREST EXISTING WELL:

GEIS 5-12 SURFACE HOLE
 LATITUDE: N40.33981°
 LONGITUDE: W104.69421°
 ELEVATION: 4686'
 825' SOUTHWEST

QUARTER/QUARTER: NW4/SW4

NEAREST APPARENT PROPERTY LINE:
 129± NORTH

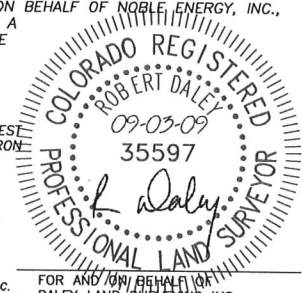
IN ACCORDANCE WITH A REQUEST FROM BILL BETSON OF NOBLE ENERGY INC., DALEY LAND SURVEYING, INC. HAS DETERMINED THE SURFACE LOCATION OF THE BOULTER G05-20 WELL TO BE 2499' FSL, 1299' FWL, AS MEASURED AT NINETY (90) DEGREES FROM THE SECTION LINES OF SECTION 5, TOWNSHIP 4 NORTH, RANGE 65 WEST OF THE 6TH PRINCIPLE MERIDIAN, WELD COUNTY COLORADO.

I HEREBY CERTIFY THAT THIS WELL LOCATION CERTIFICATE WAS PREPARED BY ME OR UNDER MY DIRECT SUPERVISION, THAT THE WORK WAS COMPLETED ON 08/31/2009 FOR AND ON BEHALF OF NOBLE ENERGY, INC., AND THAT THIS MAP DOES NOT REPRESENT A BOUNDARY SURVEY, IT IS NOT A LAND SURVEY PLAT OR AN IMPROVEMENT SURVEY PLAT AND IT IS NOT TO BE RELIED UPON FOR THE ESTABLISHMENT OF FENCE, BUILDING OR OTHER FUTURE IMPROVEMENT LINES.

NOTES:

- 1) BASIS OF BEARINGS FOR THIS MAP ARE ASSUMED AND BASED UPON GPS OBSERVATIONS MADE BETWEEN MONUMENTS LOCATED AT THE SOUTHWEST AND WEST QUARTER CORNER OF SECTION 5, T.4N., R.65W., AND ALL BEARINGS SHOWN HEREON ARE RELATIVE THERETO.
- 2) HORIZONTAL DATUM IS NAD83.
- 3) VERTICAL DATUM IS NAVD83. ELEVATIONS ARE DERIVED FROM GPS-RTK OBSERVATIONS PROCESSED THROUGH OPUS, UTILIZING THE GEOID03 MODEL.
- 4) SEE VISIBLE IMPROVEMENTS EXHIBIT FOR VISIBLE IMPROVEMENTS WITHIN 400' OF PROPOSED SURFACE HOLE LOCATION
- 5) SURFACE USE: IRRIGATED CROPLAND

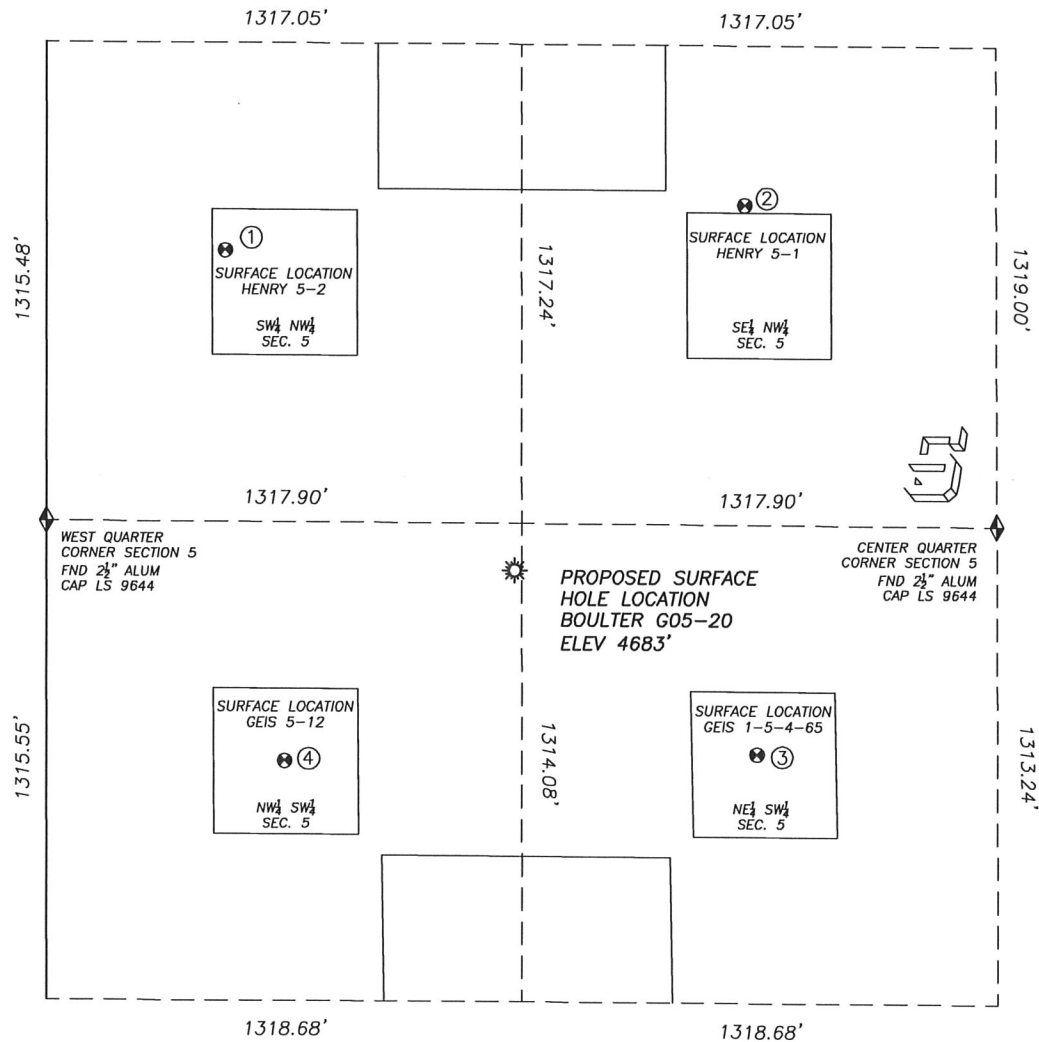
NOTICE: According to Colorado law you MUST commence any legal action based upon any defect in this W.L.C. within three years after you first discover such defect. In no event may any action based upon any such defect in this W.L.C. be commenced more than ten years from the date of the certification shown hereon.



FOR AND ON BEHALF OF
 DALEY LAND SURVEYING INC.,
 Robert Daley, PLS 35597

SITE SKETCH BOULTER G05-20

SECTION 5, TOWNSHIP 4 NORTH, RANGE 65 WEST OF THE 6TH PRINCIPLE MERIDIAN



0 500
SCALE: 1" = 500

LEGEND

- FOUND MONUMENT AS DESCRIBED
- PROPOSED WELL
- EXISTING WELL
- BOTTOM HOLE
- ABANDONED WELL

①

HENRY 5-2

SW/NW SEC. 5
1761' FNL, 495' FWL
1191' NW OF PROPOSED
SURFACE HOLE LOCATION
LAT. N40.34366°
LONG. W104.69481°
EL: 4680'
PDOP 1.8

②

HENRY 5-1

SE/NW SEC. 5
1631' FNL, 1936' FWL
1189' NE OF PROPOSED
SURFACE HOLE LOCATION
LAT. N40.34401°
LONG. W104.68965°
EL: 4678'
PDOP 1.3

③

GEIS 1-5-4-65

NE/SW SEC. 5
1997' FSL, 1969' FWL
840' SE OF PROPOSED
SURFACE HOLE LOCATION
LAT. N40.33987°
LONG. W104.68951°
EL: 4684'
PDOP 1.2

④

GEIS 5-12

NW/SW SEC. 5
1973' FSL, 661' FWL
825' SW OF PROPOSED
SURFACE HOLE LOCATION
LAT. N40.33981°
LONG. W104.69421°
EL: 4686'
PDOP 1.6

NOTES:

- 1) THIS DOES NOT REPRESENT A BOUNDARY SURVEY
- 2) THE LATITUDES AND LONGITUDES SHOWN ARE REFERENCED TO NAD83
- 3) DATUM FOR ELEVATION IS NAVD88. ELEVATIONS ARE DERIVED FROM GPS-RTK OBSERVATIONS PROCESSED THROUGH OPUS, UTILIZING THE GEOID03 MODEL.