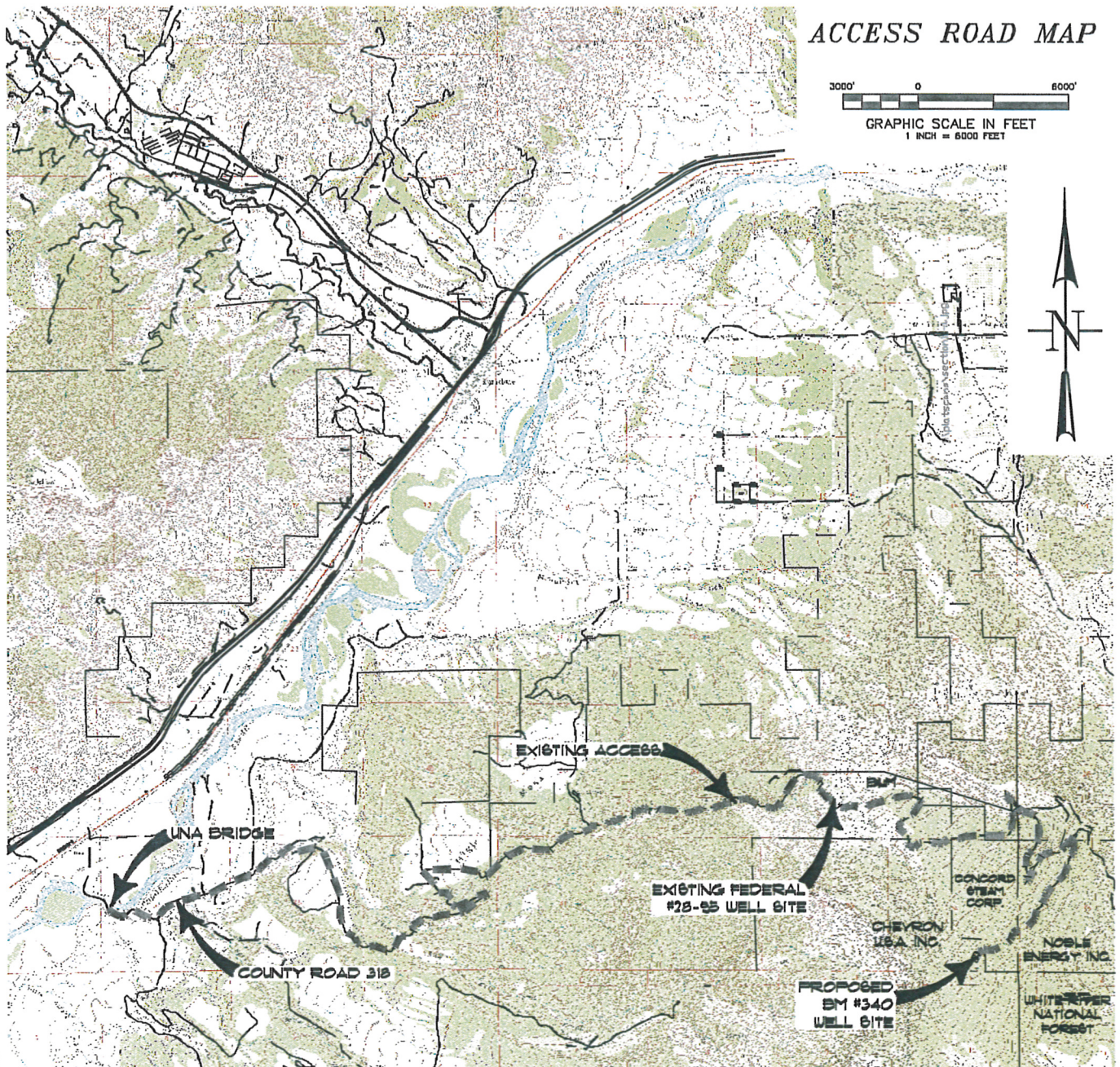


ACCESS ROAD MAP

3000' 0 6000'
GRAPHIC SCALE IN FEET
1 INCH = 6000 FEET



ACCESS:

FROM THE UNA BRIDGE, PROCEED ALONG COUNTY ROAD 318 IN A GENERAL EAST/NORTHEAST DIRECTION ± 1.2 MILES TO THE KLEBOLD/THROM GATE, PROCEED IN A GENERAL EASTERLY/SOUTHEASTERLY DIRECTION ON A PRIVATE DIRT/GRAVEL ROAD ± 1.8 MILES TO THE APPROXIMATE BLM BOUNDARY, CONTINUE ON THE DIRT/GRAVEL ROAD THRU BLM IN A GENERAL NORTHERLY DIRECTION ± 0.1 MILES TO THE APPROXIMATE TOM BROWN, INC BOUNDARY, CONTINUE ON THE DIRT/GRAVEL ROAD THRU TOM BROWN, INC PROPERTY IN A GENERAL NORTHEASTERLY/NORTHWESTERLY DIRECTION ± 1.6 MILES TO AN INTERSECTION WITH A DIRT/GRAVEL ROAD ON THE RIGHT, PROCEED RIGHT IN A GENERAL EASTERLY DIRECTION THRU TOM BROWN, INC PROPERTY ± 0.6 MILES TO THE APPROXIMATE BLM BOUNDARY, CONTINUE ON THE DIRT/GRAVEL ROAD IN A GENERAL EASTERLY DIRECTION THRU BLM PROPERTY ± 3.1 MILES TO THE TOM BROWN, INC FEDERAL #28-95 WELL SITE, CONTINUE ALONG THE DIRT/GRAVEL ROAD IN A GENERAL EASTERLY DIRECTION ± 3.6 MILES TO AN INTERSECTION WITH A DIRT/GRAVEL ROAD ON THE RIGHT, PROCEED RIGHT IN A GENERAL SOUTHWESTERLY DIRECTION ± 1.1 MILES TO AN INTERSECTION WITH A PROPOSED FLAGGED ACCESS CENTERLINE ON THE RIGHT, PROCEED RIGHT ALONG THE PROPOSED FLAGGED ACCESS CENTERLINE IN A GENERAL SOUTHWESTERLY DIRECTION ± 0.1 MILES TO THE PROPOSED BM #340 WELL SITE, BEING THE LOCATION.



CONSTRUCTION SURVEYS, INC.
0012 SUNRISE BLVD.
SILT, CO 81652
(970)876-5753

BM #340

SW1/4 SE1/4 OF SECTION 34, T. 7 S., R. 95 W.
NOBLE ENERGY INC.

SCALE: 1" = 6000'

SHEET 4 of 10