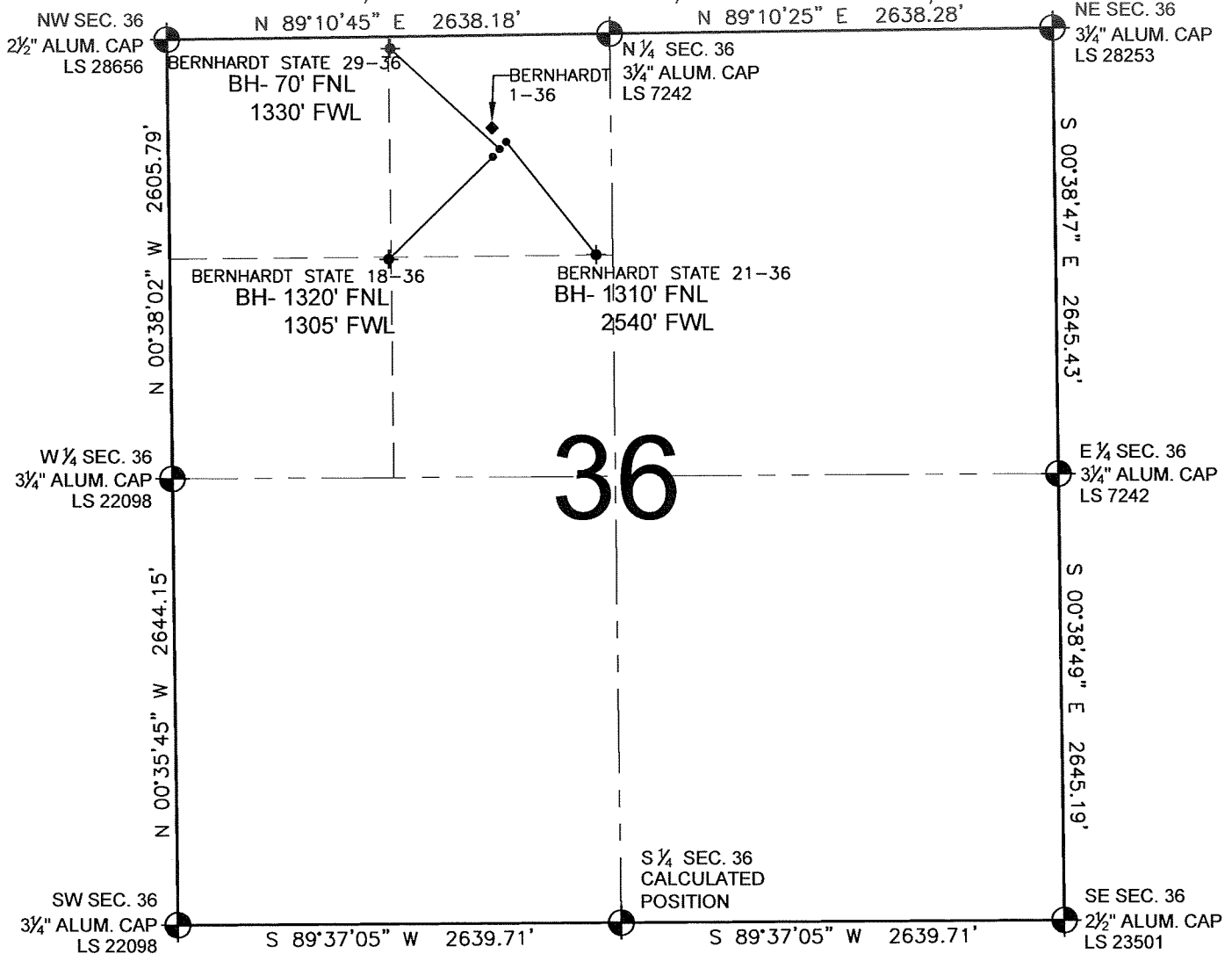


# PAD DRAWING - BERNHARDT STATE 3 PAD

SECTION 36, TOWNSHIP 5 NORTH, RANGE 67 WEST, 6TH P.M.



## LEGEND

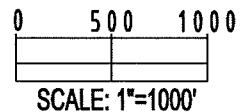
- ⊕ = EXISTING MONUMENT    ⊕ = BOTTOM HOLE    BH= BOTTOM HOLE
- = PROPOSED WELL    ◆ = EXISTING WELL


## NOTES:

- THIS SURVEY WAS DONE BY GPS METHODS AND CONFORMS TO THE MINIMUM STANDARDS SET BY THE C.O.G.C., RULE NO. 215
- ELEVATIONS SHOWN AT THE WELL HEAD, AS WELL AS HORIZONTAL CONTROL, ARE BASED ON GPS-RTK VALUES DERIVED FROM DOING 2-HOUR STATIC GPS SESSIONS AND REDUCTIONS USING O.P.U.S. SOLUTIONS.  
VERTICAL = NAVD88; HORIZONTAL = NAD83/92
- THE BEARINGS SHOWN HEREON ARE BASED ON GPS OBSERVATIONS BETWEEN THE MONUMENTS SHOWN HEREON AS FOUND ON THE FIELD DATE BELOW.
- DISTANCES SHOWN ARE AT GROUND LEVEL, AS MEASURED IN THE FIELD, WITH TIES TO WELLS MEASURED AT A PERPENDICULAR TO SECTION LINES.

## NOTES:

- BERNHARDT STATE 18-36 TO BE AT 683' FNL, 1981' FWL.  
 BOTTOM HOLE AT 1320' FNL & 1305' FWL.  
 BERNHARDT STATE 29-36 TO BE AT 658' FNL, 1998' FWL.  
 BOTTOM HOLE AT 70' FNL & 1330' FWL.  
 BERNHARDT STATE 21-36 TO BE AT 633' FNL, 2015' FWL.  
 BOTTOM HOLE AT 1310' FNL & 2540' FWL.  
 BERNHARDT 1-36 IS 605' FNL, 1973' FWL.



REVISIONS		PREPARED BY:	 <b>PFS</b> Petroleum Field Services, LLC 1801 W. 13th Ave. Denver, CO 80204
INITIAL	DATE		
SMF	09-22-09		

KERR-MCGEE OIL & GAS ONSHORE LP

FIELD DATE: 08-26-09	WELL NAME: BERNHARDT STATE 3 PAD
DRAWING DATE: 08-31-09	SURFACE LOCATION:
BY: SMF	WELD COUNTY, COLORADO NE 1/4 NW 1/4, SEC. 36, T5N, R67W