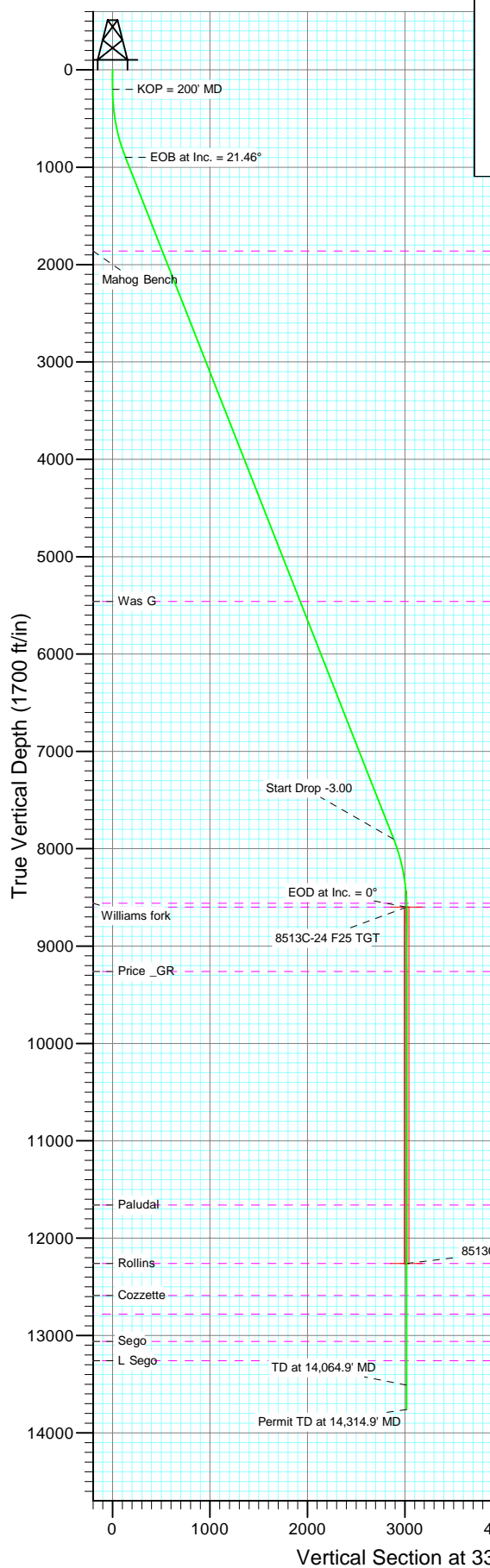
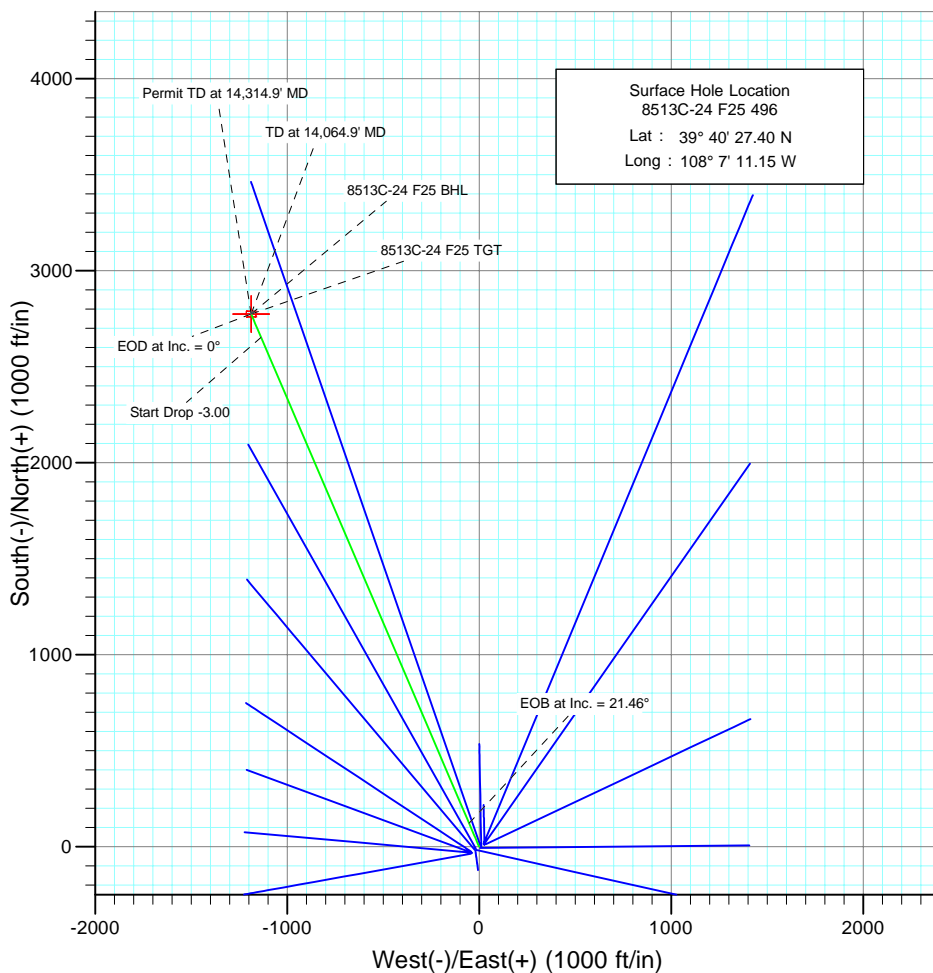




Project: Story Gulch
Site: F25 496
Well: 8513C-24 F25 496
Wellbore: DD
Design: Plan #1



SECTION DETAILS											
Sec	MD	Inc	Azi	TVD	+N/-S	+E/-W	DLeg	TFace	VSec	Target	
1	0.0	0.00	0.00	0.0	0.0	0.0	0.00	0.00	0.0		
2	200.0	0.00	0.00	200.0	0.0	0.0	0.00	0.00	0.0		
3	915.4	21.46	336.83	898.8	121.7	-52.1	3.00	336.83	132.4		
4	8439.5	21.46	336.83	7901.2	2652.6	-1135.3	0.00	0.00	2885.3		
5	9154.9	0.00	0.00	8600.0	2774.3	-1187.4	3.00	180.00	3017.7	8513C-24 F25 TGT	
6	12814.9	0.00	0.00	12260.0	2774.3	-1187.4	0.00	0.00	3017.7	8513C-24 F25 BHL	
7	14064.9	0.00	0.00	13510.0	2774.3	-1187.4	0.00	0.00	3017.7		
8	14314.9	0.00	0.00	13760.0	2774.3	-1187.4	0.00	0.00	3017.7		



Azimuths to True North
Magnetic North: 10.64°

Magnetic Field
Strength: 52519.1nT
Dip Angle: 65.92°
Date: 9/2/2009
Model: IGRF200510

FORMATION TOP DETAILS

TVDPath	MDPath	Formation
1860.0	1948.2	Mahog Bench
5460.0	5816.4	Was G
8560.0	9114.9	Williams fork
8600.0	9154.9	Top of Gas
9260.0	9814.9	Price _GR
11660.0	12214.9	Paludal
12260.0	12814.9	Rollins
12590.0	13144.9	Cozzette
12780.0	13334.9	Corcoran
13060.0	13614.9	Sego
13260.0	13814.9	L Sego

DESIGN DETAILS: Plan #1

Job #95xxx: KR

KBE @ 8320.0ft (Original Well Elev)

Target	Azimuth	Origin	N/S	E/W	From TVD
8513C-24 F25 BHL	336.83	Slot	0.0	0.0	0.0

Planning Report

Database:	US EDM 2003.21 Multi User Db	Local Co-ordinate Reference:	Well 8513C-24 F25 496
Company:	EnCana Oil & Gas (USA) Inc	TVD Reference:	KBE @ 8320.0ft (Original Well Elev)
Project:	Story Gulch	MD Reference:	KBE @ 8320.0ft (Original Well Elev)
Site:	F25 496	North Reference:	True
Well:	8513C-24 F25 496	Survey Calculation Method:	Minimum Curvature
Wellbore:	DD		
Design:	Plan #1		

Project	Story Gulch		
Map System:	US State Plane 1983	System Datum:	Mean Sea Level
Geo Datum:	North American Datum 1983		
Map Zone:	Colorado Central Zone		

Site	F25 496			
Site Position:		Northing:	1,681,091.06 ft	Latitude: 39° 40' 27.10 N
From:	Lat/Long	Easting:	2,262,632.54 ft	Longitude: 108° 7' 11.76 W
Position Uncertainty:	0.0 ft	Slot Radius:	in	Grid Convergence: -1.65 °

Well	8513C-24 F25 496			
Well Position	+N/-S	0.0 ft	Northing:	1,681,119.96 ft
	+E/-W	0.0 ft	Easting:	2,262,680.55 ft
Position Uncertainty		0.0 ft	Wellhead Elevation:	ft
			Ground Level:	8,298.0 ft

Wellbore	DD				
Magnetics	Model Name	Sample Date	Declination (°)	Dip Angle (°)	Field Strength (nT)
	IGRF200510	9/2/2009	10.64	65.92	52,519

Design	Plan #1			
Audit Notes:				
Version:	Phase:	PLAN	Tie On Depth:	0.0
Vertical Section:	Depth From (TVD) (ft)	+N/-S (ft)	+E/-W (ft)	Direction (°)
	0.0	0.0	0.0	336.83

Plan Sections										
Measured Depth (ft)	Inclination (°)	Azimuth (°)	Vertical Depth (ft)	+N/-S (ft)	+E/-W (ft)	Dogleg Rate (°/100ft)	Build Rate (°/100ft)	Turn Rate (°/100ft)	TFO (°)	Target
0.0	0.00	0.00	0.0	0.0	0.0	0.00	0.00	0.00	0.00	
200.0	0.00	0.00	200.0	0.0	0.0	0.00	0.00	0.00	0.00	
915.4	21.46	336.83	898.8	121.7	-52.1	3.00	3.00	0.00	336.83	
8,439.5	21.46	336.83	7,901.2	2,652.6	-1,135.3	0.00	0.00	0.00	0.00	
9,154.9	0.00	0.00	8,600.0	2,774.3	-1,187.4	3.00	-3.00	0.00	180.00	8513C-24 F25 TGT
12,814.9	0.00	0.00	12,260.0	2,774.3	-1,187.4	0.00	0.00	0.00	0.00	8513C-24 F25 BHL
14,064.9	0.00	0.00	13,510.0	2,774.3	-1,187.4	0.00	0.00	0.00	0.00	
14,314.9	0.00	0.00	13,760.0	2,774.3	-1,187.4	0.00	0.00	0.00	0.00	

Planning Report

Database:	US EDM 2003.21 Multi User Db	Local Co-ordinate Reference:	Well 8513C-24 F25 496
Company:	EnCana Oil & Gas (USA) Inc	TVD Reference:	KBE @ 8320.0ft (Original Well Elev)
Project:	Story Gulch	MD Reference:	KBE @ 8320.0ft (Original Well Elev)
Site:	F25 496	North Reference:	True
Well:	8513C-24 F25 496	Survey Calculation Method:	Minimum Curvature
Wellbore:	DD		
Design:	Plan #1		

Planned Survey

Measured Depth (ft)	Inclination (°)	Azimuth (°)	Vertical Depth (ft)	+N/-S (ft)	+E/-W (ft)	Vertical Section (ft)	Dogleg Rate (°/100ft)	Build Rate (°/100ft)	Comments / Formations
0.0	0.00	0.00	0.0	0.0	0.0	0.0	0.00	0.00	
100.0	0.00	0.00	100.0	0.0	0.0	0.0	0.00	0.00	
200.0	0.00	0.00	200.0	0.0	0.0	0.0	0.00	0.00	KOP = 200' MD
300.0	3.00	336.83	300.0	2.4	-1.0	2.6	3.00	3.00	
400.0	6.00	336.83	399.6	9.6	-4.1	10.5	3.00	3.00	
500.0	9.00	336.83	498.8	21.6	-9.3	23.5	3.00	3.00	
600.0	12.00	336.83	597.1	38.4	-16.4	41.7	3.00	3.00	
700.0	15.00	336.83	694.3	59.8	-25.6	65.1	3.00	3.00	
800.0	18.00	336.83	790.2	85.9	-36.8	93.5	3.00	3.00	
900.0	21.00	336.83	884.4	116.6	-49.9	126.9	3.00	3.00	
915.4	21.46	336.83	898.8	121.7	-52.1	132.4	3.00	3.00	EOB at Inc. = 21.46°
1,000.0	21.46	336.83	977.5	150.2	-64.3	163.4	0.00	0.00	
1,100.0	21.46	336.83	1,070.6	183.8	-78.7	200.0	0.00	0.00	
1,200.0	21.46	336.83	1,163.7	217.5	-93.1	236.6	0.00	0.00	
1,300.0	21.46	336.83	1,256.7	251.1	-107.5	273.1	0.00	0.00	
1,400.0	21.46	336.83	1,349.8	284.7	-121.9	309.7	0.00	0.00	
1,500.0	21.46	336.83	1,442.9	318.4	-136.3	346.3	0.00	0.00	
1,600.0	21.46	336.83	1,535.9	352.0	-150.7	382.9	0.00	0.00	
1,700.0	21.46	336.83	1,629.0	385.7	-165.1	419.5	0.00	0.00	
1,800.0	21.46	336.83	1,722.1	419.3	-179.5	456.1	0.00	0.00	
1,900.0	21.46	336.83	1,815.1	452.9	-193.8	492.7	0.00	0.00	
1,948.2	21.46	336.83	1,860.0	469.2	-200.8	510.3	0.00	0.00	Mahog Bench
2,000.0	21.46	336.83	1,908.2	486.6	-208.2	529.3	0.00	0.00	
2,100.0	21.46	336.83	2,001.3	520.2	-222.6	565.8	0.00	0.00	
2,200.0	21.46	336.83	2,094.3	553.8	-237.0	602.4	0.00	0.00	
2,300.0	21.46	336.83	2,187.4	587.5	-251.4	639.0	0.00	0.00	
2,400.0	21.46	336.83	2,280.5	621.1	-265.8	675.6	0.00	0.00	
2,500.0	21.46	336.83	2,373.5	654.7	-280.2	712.2	0.00	0.00	
2,600.0	21.46	336.83	2,466.6	688.4	-294.6	748.8	0.00	0.00	
2,700.0	21.46	336.83	2,559.6	722.0	-309.0	785.4	0.00	0.00	
2,800.0	21.46	336.83	2,652.7	755.7	-323.4	822.0	0.00	0.00	
2,900.0	21.46	336.83	2,745.8	789.3	-337.8	858.5	0.00	0.00	
3,000.0	21.46	336.83	2,838.8	822.9	-352.2	895.1	0.00	0.00	
3,100.0	21.46	336.83	2,931.9	856.6	-366.6	931.7	0.00	0.00	
3,200.0	21.46	336.83	3,025.0	890.2	-381.0	968.3	0.00	0.00	
3,300.0	21.46	336.83	3,118.0	923.8	-395.4	1,004.9	0.00	0.00	
3,400.0	21.46	336.83	3,211.1	957.5	-409.8	1,041.5	0.00	0.00	
3,500.0	21.46	336.83	3,304.2	991.1	-424.2	1,078.1	0.00	0.00	
3,600.0	21.46	336.83	3,397.2	1,024.8	-438.6	1,114.7	0.00	0.00	
3,700.0	21.46	336.83	3,490.3	1,058.4	-453.0	1,151.2	0.00	0.00	
3,800.0	21.46	336.83	3,583.4	1,092.0	-467.4	1,187.8	0.00	0.00	
3,900.0	21.46	336.83	3,676.4	1,125.7	-481.8	1,224.4	0.00	0.00	
4,000.0	21.46	336.83	3,769.5	1,159.3	-496.2	1,261.0	0.00	0.00	
4,100.0	21.46	336.83	3,862.6	1,192.9	-510.6	1,297.6	0.00	0.00	
4,200.0	21.46	336.83	3,955.6	1,226.6	-525.0	1,334.2	0.00	0.00	
4,300.0	21.46	336.83	4,048.7	1,260.2	-539.3	1,370.8	0.00	0.00	
4,400.0	21.46	336.83	4,141.8	1,293.8	-553.7	1,407.4	0.00	0.00	
4,500.0	21.46	336.83	4,234.8	1,327.5	-568.1	1,443.9	0.00	0.00	
4,600.0	21.46	336.83	4,327.9	1,361.1	-582.5	1,480.5	0.00	0.00	
4,700.0	21.46	336.83	4,421.0	1,394.8	-596.9	1,517.1	0.00	0.00	
4,800.0	21.46	336.83	4,514.0	1,428.4	-611.3	1,553.7	0.00	0.00	
4,900.0	21.46	336.83	4,607.1	1,462.0	-625.7	1,590.3	0.00	0.00	

Planning Report

Database:	US EDM 2003.21 Multi User Db	Local Co-ordinate Reference:	Well 8513C-24 F25 496
Company:	EnCana Oil & Gas (USA) Inc	TVD Reference:	KBE @ 8320.0ft (Original Well Elev)
Project:	Story Gulch	MD Reference:	KBE @ 8320.0ft (Original Well Elev)
Site:	F25 496	North Reference:	True
Well:	8513C-24 F25 496	Survey Calculation Method:	Minimum Curvature
Wellbore:	DD		
Design:	Plan #1		

Planned Survey

Measured Depth (ft)	Inclination (°)	Azimuth (°)	Vertical Depth (ft)	+N/-S (ft)	+E/-W (ft)	Vertical Section (ft)	Dogleg Rate (°/100ft)	Build Rate (°/100ft)	Comments / Formations
5,000.0	21.46	336.83	4,700.2	1,495.7	-640.1	1,626.9	0.00	0.00	
5,100.0	21.46	336.83	4,793.2	1,529.3	-654.5	1,663.5	0.00	0.00	
5,200.0	21.46	336.83	4,886.3	1,562.9	-668.9	1,700.1	0.00	0.00	
5,300.0	21.46	336.83	4,979.4	1,596.6	-683.3	1,736.6	0.00	0.00	
5,400.0	21.46	336.83	5,072.4	1,630.2	-697.7	1,773.2	0.00	0.00	
5,500.0	21.46	336.83	5,165.5	1,663.8	-712.1	1,809.8	0.00	0.00	
5,600.0	21.46	336.83	5,258.6	1,697.5	-726.5	1,846.4	0.00	0.00	
5,700.0	21.46	336.83	5,351.6	1,731.1	-740.9	1,883.0	0.00	0.00	
5,800.0	21.46	336.83	5,444.7	1,764.8	-755.3	1,919.6	0.00	0.00	
5,816.4	21.46	336.83	5,460.0	1,770.3	-757.7	1,925.6	0.00	0.00	Was G
5,900.0	21.46	336.83	5,537.8	1,798.4	-769.7	1,956.2	0.00	0.00	
6,000.0	21.46	336.83	5,630.8	1,832.0	-784.1	1,992.8	0.00	0.00	
6,100.0	21.46	336.83	5,723.9	1,865.7	-798.5	2,029.3	0.00	0.00	
6,200.0	21.46	336.83	5,817.0	1,899.3	-812.9	2,065.9	0.00	0.00	
6,300.0	21.46	336.83	5,910.0	1,932.9	-827.3	2,102.5	0.00	0.00	
6,400.0	21.46	336.83	6,003.1	1,966.6	-841.7	2,139.1	0.00	0.00	
6,500.0	21.46	336.83	6,096.2	2,000.2	-856.1	2,175.7	0.00	0.00	
6,600.0	21.46	336.83	6,189.2	2,033.8	-870.5	2,212.3	0.00	0.00	
6,700.0	21.46	336.83	6,282.3	2,067.5	-884.9	2,248.9	0.00	0.00	
6,800.0	21.46	336.83	6,375.4	2,101.1	-899.2	2,285.5	0.00	0.00	
6,900.0	21.46	336.83	6,468.4	2,134.8	-913.6	2,322.0	0.00	0.00	
7,000.0	21.46	336.83	6,561.5	2,168.4	-928.0	2,358.6	0.00	0.00	
7,100.0	21.46	336.83	6,654.6	2,202.0	-942.4	2,395.2	0.00	0.00	
7,200.0	21.46	336.83	6,747.6	2,235.7	-956.8	2,431.8	0.00	0.00	
7,300.0	21.46	336.83	6,840.7	2,269.3	-971.2	2,468.4	0.00	0.00	
7,400.0	21.46	336.83	6,933.8	2,302.9	-985.6	2,505.0	0.00	0.00	
7,500.0	21.46	336.83	7,026.8	2,336.6	-1,000.0	2,541.6	0.00	0.00	
7,600.0	21.46	336.83	7,119.9	2,370.2	-1,014.4	2,578.2	0.00	0.00	
7,700.0	21.46	336.83	7,213.0	2,403.8	-1,028.8	2,614.7	0.00	0.00	
7,800.0	21.46	336.83	7,306.0	2,437.5	-1,043.2	2,651.3	0.00	0.00	
7,900.0	21.46	336.83	7,399.1	2,471.1	-1,057.6	2,687.9	0.00	0.00	
8,000.0	21.46	336.83	7,492.2	2,504.8	-1,072.0	2,724.5	0.00	0.00	
8,100.0	21.46	336.83	7,585.2	2,538.4	-1,086.4	2,761.1	0.00	0.00	
8,200.0	21.46	336.83	7,678.3	2,572.0	-1,100.8	2,797.7	0.00	0.00	
8,300.0	21.46	336.83	7,771.4	2,605.7	-1,115.2	2,834.3	0.00	0.00	
8,400.0	21.46	336.83	7,864.4	2,639.3	-1,129.6	2,870.9	0.00	0.00	
8,439.5	21.46	336.83	7,901.2	2,652.6	-1,135.3	2,885.3	0.00	0.00	Start Drop -3.00
8,500.0	19.65	336.83	7,957.8	2,672.1	-1,143.6	2,906.6	3.00	-3.00	
8,600.0	16.65	336.83	8,052.9	2,700.7	-1,155.9	2,937.7	3.00	-3.00	
8,700.0	13.65	336.83	8,149.4	2,724.8	-1,166.2	2,963.8	3.00	-3.00	
8,800.0	10.65	336.83	8,247.1	2,744.1	-1,174.4	2,984.9	3.00	-3.00	
8,900.0	7.65	336.83	8,345.8	2,758.7	-1,180.7	3,000.8	3.00	-3.00	
9,000.0	4.65	336.83	8,445.2	2,768.6	-1,184.9	3,011.5	3.00	-3.00	
9,100.0	1.65	336.83	8,545.1	2,773.6	-1,187.1	3,017.0	3.00	-3.00	
9,114.9	1.20	336.83	8,560.0	2,774.0	-1,187.2	3,017.3	3.00	-3.00	Williams fork
9,154.9	0.00	0.00	8,600.0	2,774.3	-1,187.4	3,017.7	3.00	-3.00	EOD at Inc. = 0° - Top of Gas - 8513C-24 F25 1
9,200.0	0.00	0.00	8,645.1	2,774.3	-1,187.4	3,017.7	0.00	0.00	
9,300.0	0.00	0.00	8,745.1	2,774.3	-1,187.4	3,017.7	0.00	0.00	
9,400.0	0.00	0.00	8,845.1	2,774.3	-1,187.4	3,017.7	0.00	0.00	
9,500.0	0.00	0.00	8,945.1	2,774.3	-1,187.4	3,017.7	0.00	0.00	
9,600.0	0.00	0.00	9,045.1	2,774.3	-1,187.4	3,017.7	0.00	0.00	
9,700.0	0.00	0.00	9,145.1	2,774.3	-1,187.4	3,017.7	0.00	0.00	

Planning Report

Database:	US EDM 2003.21 Multi User Db	Local Co-ordinate Reference:	Well 8513C-24 F25 496
Company:	EnCana Oil & Gas (USA) Inc	TVD Reference:	KBE @ 8320.0ft (Original Well Elev)
Project:	Story Gulch	MD Reference:	KBE @ 8320.0ft (Original Well Elev)
Site:	F25 496	North Reference:	True
Well:	8513C-24 F25 496	Survey Calculation Method:	Minimum Curvature
Wellbore:	DD		
Design:	Plan #1		

Planned Survey									
Measured Depth (ft)	Inclination (°)	Azimuth (°)	Vertical Depth (ft)	+N/-S (ft)	+E/-W (ft)	Vertical Section (ft)	Dogleg Rate (°/100ft)	Build Rate (°/100ft)	Comments / Formations
9,800.0	0.00	0.00	9,245.1	2,774.3	-1,187.4	3,017.7	0.00	0.00	
9,814.9	0.00	0.00	9,260.0	2,774.3	-1,187.4	3,017.7	0.00	0.00	Price_GR
9,900.0	0.00	0.00	9,345.1	2,774.3	-1,187.4	3,017.7	0.00	0.00	
10,000.0	0.00	0.00	9,445.1	2,774.3	-1,187.4	3,017.7	0.00	0.00	
10,100.0	0.00	0.00	9,545.1	2,774.3	-1,187.4	3,017.7	0.00	0.00	
10,200.0	0.00	0.00	9,645.1	2,774.3	-1,187.4	3,017.7	0.00	0.00	
10,300.0	0.00	0.00	9,745.1	2,774.3	-1,187.4	3,017.7	0.00	0.00	
10,400.0	0.00	0.00	9,845.1	2,774.3	-1,187.4	3,017.7	0.00	0.00	
10,500.0	0.00	0.00	9,945.1	2,774.3	-1,187.4	3,017.7	0.00	0.00	
10,600.0	0.00	0.00	10,045.1	2,774.3	-1,187.4	3,017.7	0.00	0.00	
10,700.0	0.00	0.00	10,145.1	2,774.3	-1,187.4	3,017.7	0.00	0.00	
10,800.0	0.00	0.00	10,245.1	2,774.3	-1,187.4	3,017.7	0.00	0.00	
10,900.0	0.00	0.00	10,345.1	2,774.3	-1,187.4	3,017.7	0.00	0.00	
11,000.0	0.00	0.00	10,445.1	2,774.3	-1,187.4	3,017.7	0.00	0.00	
11,100.0	0.00	0.00	10,545.1	2,774.3	-1,187.4	3,017.7	0.00	0.00	
11,200.0	0.00	0.00	10,645.1	2,774.3	-1,187.4	3,017.7	0.00	0.00	
11,300.0	0.00	0.00	10,745.1	2,774.3	-1,187.4	3,017.7	0.00	0.00	
11,400.0	0.00	0.00	10,845.1	2,774.3	-1,187.4	3,017.7	0.00	0.00	
11,500.0	0.00	0.00	10,945.1	2,774.3	-1,187.4	3,017.7	0.00	0.00	
11,600.0	0.00	0.00	11,045.1	2,774.3	-1,187.4	3,017.7	0.00	0.00	
11,700.0	0.00	0.00	11,145.1	2,774.3	-1,187.4	3,017.7	0.00	0.00	
11,800.0	0.00	0.00	11,245.1	2,774.3	-1,187.4	3,017.7	0.00	0.00	
11,900.0	0.00	0.00	11,345.1	2,774.3	-1,187.4	3,017.7	0.00	0.00	
12,000.0	0.00	0.00	11,445.1	2,774.3	-1,187.4	3,017.7	0.00	0.00	
12,100.0	0.00	0.00	11,545.1	2,774.3	-1,187.4	3,017.7	0.00	0.00	
12,200.0	0.00	0.00	11,645.1	2,774.3	-1,187.4	3,017.7	0.00	0.00	
12,214.9	0.00	0.00	11,660.0	2,774.3	-1,187.4	3,017.7	0.00	0.00	Paludal
12,300.0	0.00	0.00	11,745.1	2,774.3	-1,187.4	3,017.7	0.00	0.00	
12,400.0	0.00	0.00	11,845.1	2,774.3	-1,187.4	3,017.7	0.00	0.00	
12,500.0	0.00	0.00	11,945.1	2,774.3	-1,187.4	3,017.7	0.00	0.00	
12,600.0	0.00	0.00	12,045.1	2,774.3	-1,187.4	3,017.7	0.00	0.00	
12,700.0	0.00	0.00	12,145.1	2,774.3	-1,187.4	3,017.7	0.00	0.00	
12,800.0	0.00	0.00	12,245.1	2,774.3	-1,187.4	3,017.7	0.00	0.00	
12,814.9	0.00	0.00	12,260.0	2,774.3	-1,187.4	3,017.7	0.00	0.00	Rollins - 8513C-24 F25 BHL
12,900.0	0.00	0.00	12,345.1	2,774.3	-1,187.4	3,017.7	0.00	0.00	
13,000.0	0.00	0.00	12,445.1	2,774.3	-1,187.4	3,017.7	0.00	0.00	
13,100.0	0.00	0.00	12,545.1	2,774.3	-1,187.4	3,017.7	0.00	0.00	
13,144.9	0.00	0.00	12,590.0	2,774.3	-1,187.4	3,017.7	0.00	0.00	Cozzette
13,200.0	0.00	0.00	12,645.1	2,774.3	-1,187.4	3,017.7	0.00	0.00	
13,300.0	0.00	0.00	12,745.1	2,774.3	-1,187.4	3,017.7	0.00	0.00	
13,334.9	0.00	0.00	12,780.0	2,774.3	-1,187.4	3,017.7	0.00	0.00	Corcoran
13,400.0	0.00	0.00	12,845.1	2,774.3	-1,187.4	3,017.7	0.00	0.00	
13,500.0	0.00	0.00	12,945.1	2,774.3	-1,187.4	3,017.7	0.00	0.00	
13,600.0	0.00	0.00	13,045.1	2,774.3	-1,187.4	3,017.7	0.00	0.00	
13,614.9	0.00	0.00	13,060.0	2,774.3	-1,187.4	3,017.7	0.00	0.00	Sego
13,700.0	0.00	0.00	13,145.1	2,774.3	-1,187.4	3,017.7	0.00	0.00	
13,800.0	0.00	0.00	13,245.1	2,774.3	-1,187.4	3,017.7	0.00	0.00	
13,814.9	0.00	0.00	13,260.0	2,774.3	-1,187.4	3,017.7	0.00	0.00	L Sego
13,900.0	0.00	0.00	13,345.1	2,774.3	-1,187.4	3,017.7	0.00	0.00	
14,000.0	0.00	0.00	13,445.1	2,774.3	-1,187.4	3,017.7	0.00	0.00	
14,064.9	0.00	0.00	13,510.0	2,774.3	-1,187.4	3,017.7	0.00	0.00	TD at 14,064.9' MD
14,100.0	0.00	0.00	13,545.1	2,774.3	-1,187.4	3,017.7	0.00	0.00	

Planning Report

Database:	US EDM 2003.21 Multi User Db	Local Co-ordinate Reference:	Well 8513C-24 F25 496
Company:	EnCana Oil & Gas (USA) Inc	TVD Reference:	KBE @ 8320.0ft (Original Well Elev)
Project:	Story Gulch	MD Reference:	KBE @ 8320.0ft (Original Well Elev)
Site:	F25 496	North Reference:	True
Well:	8513C-24 F25 496	Survey Calculation Method:	Minimum Curvature
Wellbore:	DD		
Design:	Plan #1		

Planned Survey

Measured Depth (ft)	Inclination (°)	Azimuth (°)	Vertical Depth (ft)	+N/-S (ft)	+E/-W (ft)	Vertical Section (ft)	Dogleg Rate (°/100ft)	Build Rate (°/100ft)	Comments / Formations
14,200.0	0.00	0.00	13,645.1	2,774.3	-1,187.4	3,017.7	0.00	0.00	
14,300.0	0.00	0.00	13,745.1	2,774.3	-1,187.4	3,017.7	0.00	0.00	
14,314.9	0.00	0.00	13,760.0	2,774.3	-1,187.4	3,017.7	0.00	0.00	Permit TD at 14,314.9' MD

Targets

Target Name - hit/miss target - Shape	Dip Angle (°)	Dip Dir. (°)	TVD (ft)	+N/-S (ft)	+E/-W (ft)	Northing (ft)	Easting (ft)	Latitude	Longitude
8513C-24 F25 BHL - plan hits target center - Rectangle (sides W30.0 H50.0 D0.0)	0.00	0.00	12,260.0	2,774.3	-1,187.4	1,683,927.38	2,261,573.66	39° 40' 54.82 N	108° 7' 26.34 W
8513C-24 F25 TGT - plan hits target center - Point	0.00	0.00	8,600.0	2,774.3	-1,187.4	1,683,927.38	2,261,573.66	39° 40' 54.82 N	108° 7' 26.34 W

Formations

Measured Depth (ft)	Vertical Depth (ft)	Name	Lithology	Dip (°)	Dip Direction (°)
1,948.2	1,860.0	Mahog Bench		0.00	
5,816.4	5,460.0	Was G		0.00	
9,114.9	8,560.0	Williams fork		0.00	
9,154.9	8,600.0	Top of Gas		0.00	
9,814.9	9,260.0	Price _GR		0.00	
12,214.9	11,660.0	Paludal		0.00	
12,814.9	12,260.0	Rollins		0.00	
13,144.9	12,590.0	Cozzette		0.00	
13,334.9	12,780.0	Corcoran		0.00	
13,614.9	13,060.0	Sego		0.00	
13,814.9	13,260.0	L Sego		0.00	

Plan Annotations

Measured Depth (ft)	Vertical Depth (ft)	Local Coordinates		Comment
		+N/-S (ft)	+E/-W (ft)	
200.0	200.0	0.0	0.0	KOP = 200' MD
915.4	898.8	121.7	-52.1	EOB at Inc. = 21.46°
8,439.5	7,901.2	2,652.6	-1,135.3	Start Drop -3.00
9,154.9	8,600.0	2,774.3	-1,187.4	EOD at Inc. = 0°
14,064.9	13,510.0	2,774.3	-1,187.4	TD at 14,064.9' MD
14,314.9	13,760.0	2,774.3	-1,187.4	Permit TD at 14,314.9' MD