

Bottom T4S, R96W, 6th P.M.
Hole

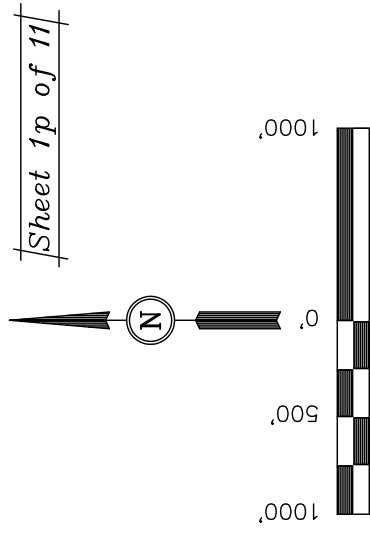
Well location, STORY GULCH UNIT #8513C-24 F25 496, (SURFACE LOCATION) located as shown in the SE 1/4 NW 1/4 of Section 25, T4S, R96W, 6th P.M., Garfield County, Colorado.

BASIS OF ELEVATION

BENCH MARK (H79) LOCATED IN THE NE 1/4 OF SECTION 25, T4S, R98W, 6th P.M. TAKEN FROM THE BULL FORK QUADRANGLE, COLORADO, 7.5 MINUTE SERIES (TOPOGRAPHICAL MAP) PUBLISHED BY THE UNITED STATES DEPARTMENT OF THE INTERIOR, GEOLOGICAL SURVEY. SAID ELEVATION IS MARKED AS BEING 8535 FEET.

BASIS OF BEARINGS

BASIS OF BEARINGS IS A G.P.S. OBSERVATION.



CERTIFICATE

THIS IS TO CERTIFY THAT THE ABOVE PLATFORM WAS PREPARED FROM FIELD NOTES OF ACTUAL SURVEYS MADE BY ME OR UNDER MY SUPERVISION AND THAT THE SAME ARE TRUE AND CORRECT TO THE BEST OF MY KNOWLEDGE AND BELIEF.

REGISTERED LAND SURVEYOR
REGISTRATION NO. 17492
STATE OF COLORADO

UNTAH ENGINEERING & LAND SURVEYING

85 SOUTH 200 EAST - VERNAL, UTAH 84078

(435) 789-1017

SCALE	DATE SURVEYED:	DATE DRAWN:
1" = 1000'	08-07-09	08-27-09

PARTY	REFERENCES
D.K. J.R. K.G.	G.I.O. PLAT

	WEATHER	FILE
--	---------	------

EnCana Oil & Gas (USA) Inc.

LEGEND:

$$L = 90^\circ \text{ SYMBOL}$$

● = PROPOSED WELL HEAD.

▲ = SECTION CORNERS LOCATED.

NOTE:
SEE ADDENDUM TO LEGAL PLAT FOR
EXISTING IMPROVEMENTS WITHIN 400'
OF THE PROPOSED WELL HEAD.

NAD 83 (SURFACE LOCATION)

NAD 83 (SURFACE LOCATION)
LATITUDE = 39°40'27.40" (39.674278)

LONGITUDE = 108°07'11.15" (108.119764)

NAD 27 (SURFACE LOCATION)

LATITUDE = 39°40'27.49" (39.674303)
LONGITUDE = 108°07'08.87" (108.119131)

PDOP = 1.6

NAD 83 (SURFACE LOCATION)

LATITUDE = 39°40'27.40" (39.674278)

LONGITUDE = 108.0711.15 (108.119/64)
NAD 27 (SIPCEACE LOCATION)

1 ALTITUDE = 39°40'27.49" (39 674303)

LONGITUDE = 108°07'08.87" (108.119131)

T4S, R96W, 6th P.M.

EnCana Oil & Gas (USA) Inc.

Well location, STORY GULCH UNIT #8513C-24 F25 496, (TARGET BOTTOM HOLE) located as shown in the SW 1/4 SW 1/4 of Section 24, T4S, R96W, 6th P.M., Garfield County, Colorado.

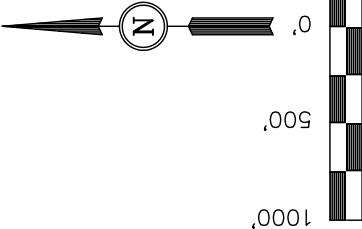
BASIS OF ELEVATION

BENCH MARK (H79) LOCATED IN THE NE 1/4 OF SECTION 25, T4S, R98W, 6th P.M. TAKEN FROM THE BULL FORK QUADRANGLE, COLORADO, 7.5 MINUTE SERIES (TOPO GRAPHICAL MAP) PUBLISHED BY THE UNITED STATES DEPARTMENT OF THE INTERIOR, GEOLOGICAL SURVEY. SAID ELEVATION IS MARKED AS BEING 8535 FEET.

BASIS OF BEARINGS

BASIS OF BEARINGS IS A G.P.S. OBSERVATION.

Sheet 1q of 11



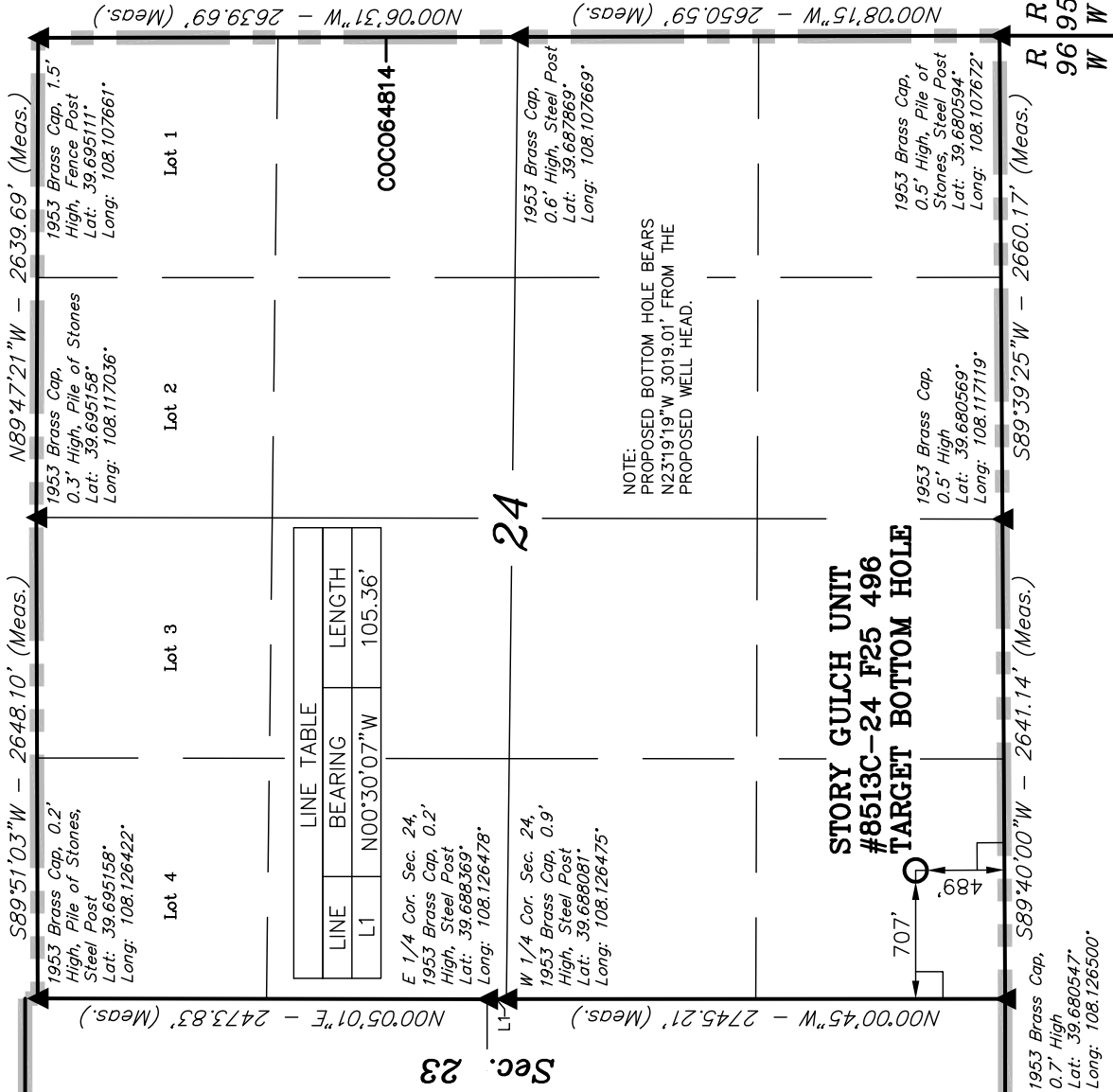
SCALE
CERTIFICATE

THIS IS TO CERTIFY THAT THE ABOVE PLAT WAS PREPARED FROM FIELD NOTES OF ACTUAL SURVEYS MADE BY ME OR UNDER MY SUPERVISION AND THAT THE SAME ARE TRUE AND CORRECT TO THE BEST OF MY KNOWLEDGE AND BELIEF.

REGISTERED LAND SURVEYOR
REGISTRATION NO. 17492
STATE OF COLORADO

UNTAH ENGINEERING & LAND SURVEYING
85 SOUTH 200 EAST - VERNAL, UTAH 84078
(435) 789-1017

SCALE 1" = 1000'	DATE SURVEYED: 08-07-09	DATE DRAWN: 08-27-09
PARTY D.K. J.R. K.G.	REFERENCES G.L.O. PLAT	
WEATHER WARM	FILE	
		EnCana Oil & Gas (USA) INC.



LEGEND:

- = 90° SYMBOL
- = PROPOSED WELL HEAD.
- ▲ = SECTION CORNERS LOCATED.

NAD 83 (TARGET BOTTOM HOLE)
LATITUDE = 39°40'54.82" (39.681894)
LONGITUDE = 108°07'26.34" (108.123983)
NAD 27 (TARGET BOTTOM HOLE)
LATITUDE = 39°40'54.91" (39.681919)
LONGITUDE = 108°07'24.05" (108.123347)