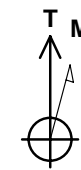
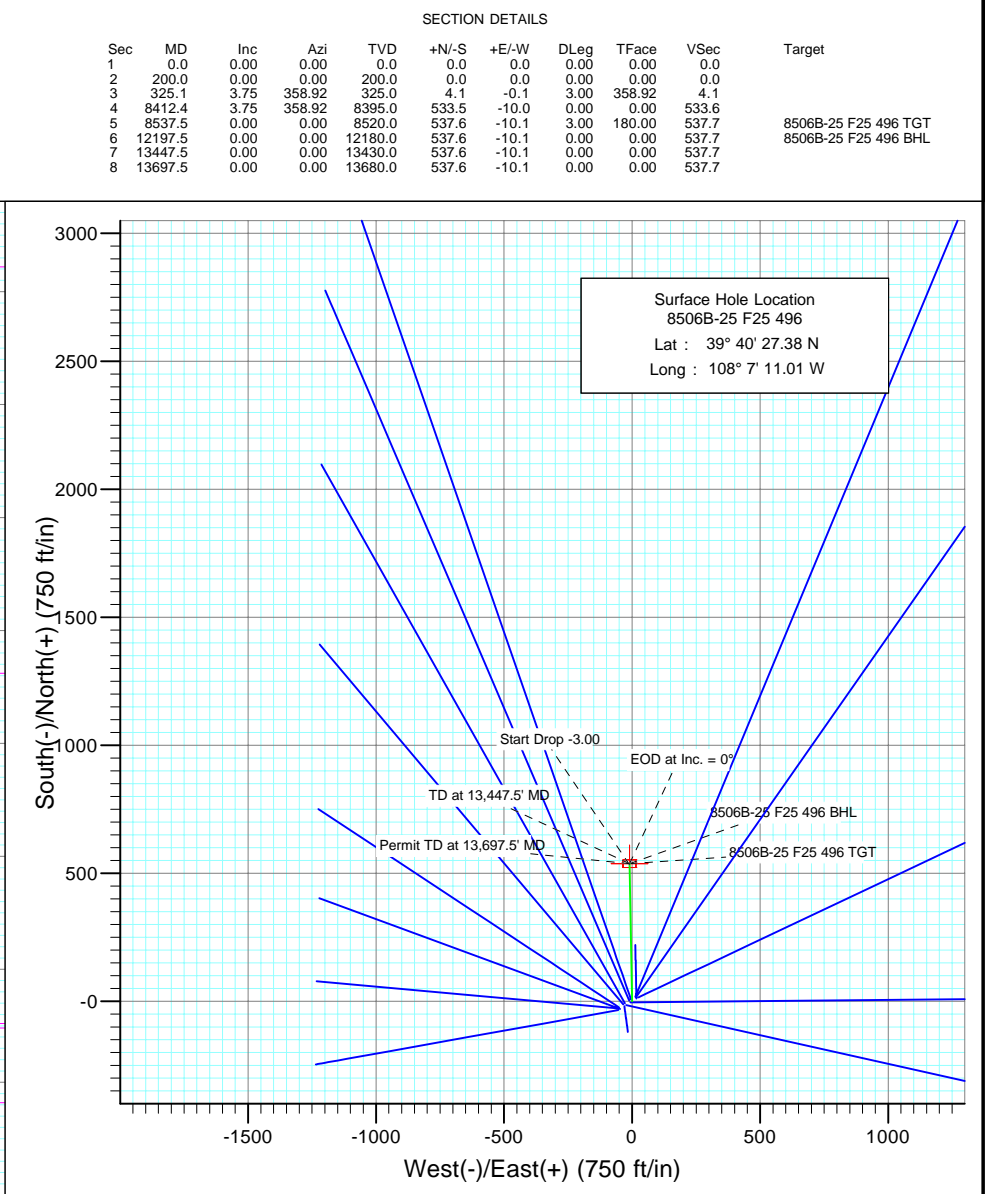
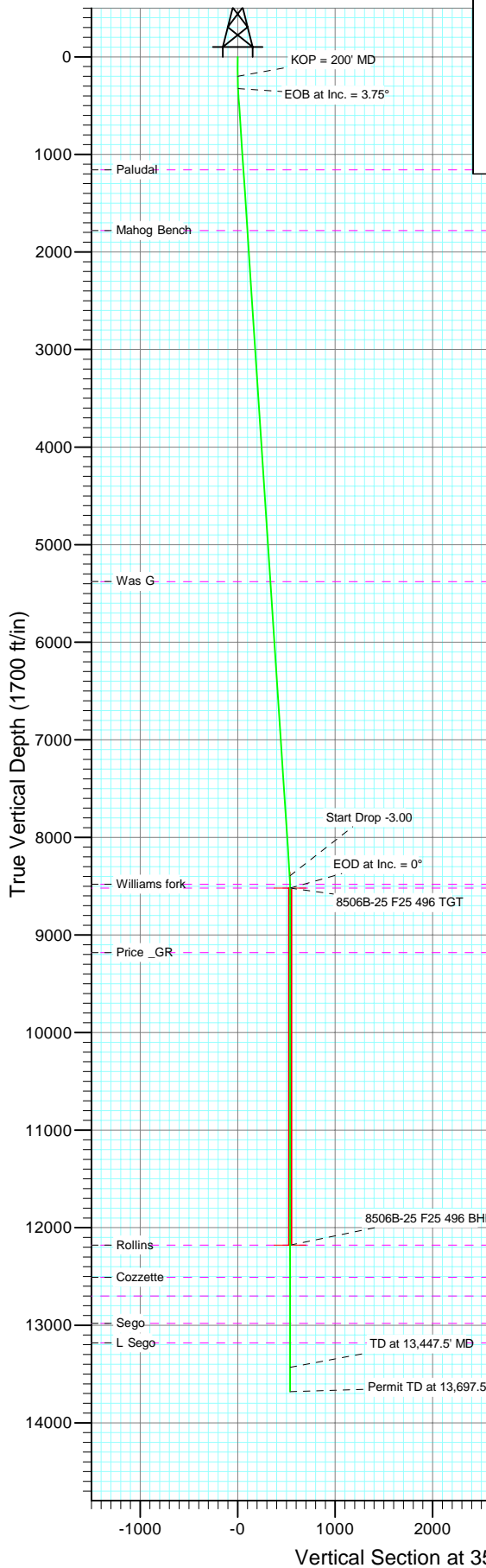




Project: Story Gulch
Site: F25 496
Well: 8506B-25 F25 496
Wellbore: DD
Design: Plan #1



Azimuths to True North
Magnetic North: 10.64°

Magnetic Field
Strength: 52519.3nT
Dip Angle: 65.92°
Date: 9/1/2009
Model: IGRF200510

FORMATION TOP DETAILS

TVDPATH	MDPATH	FORMATION
1158.0	1159.9	Paludal
1780.0	1783.2	Mahog Bench
5380.0	5391.0	Was G
8480.0	8497.5	Williams fork
8520.0	8537.5	Top of Gas
9180.0	9197.5	Price _GR
12180.0	12197.5	Rollins
12510.0	12527.5	Cozzette
12700.0	12717.5	Corcoran
12980.0	12997.5	Sego
13180.0	13197.5	L Sego

DESIGN DETAILS: Plan #1

Job #95xxx: KR

KBE @ 8320.0ft (Original Well Elev)

Target	Azimuth	Origin	N/S	E/W	From TVD
8506B-25 F25 496 BHL	358.92	Slot	0.0	0.0	0.0

Planning Report

Database:	US EDM 2003.21 Multi User Db	Local Co-ordinate Reference:	Well 8506B-25 F25 496
Company:	EnCana Oil & Gas (USA) Inc	TVD Reference:	KBE @ 8320.0ft (Original Well Elev)
Project:	Story Gulch	MD Reference:	KBE @ 8320.0ft (Original Well Elev)
Site:	F25 496	North Reference:	True
Well:	8506B-25 F25 496	Survey Calculation Method:	Minimum Curvature
Wellbore:	DD		
Design:	Plan #1		

Project	Story Gulch		
Map System:	US State Plane 1983	System Datum:	Mean Sea Level
Geo Datum:	North American Datum 1983		
Map Zone:	Colorado Central Zone		

Site	F25 496				
Site Position:		Northing:	1,681,091.06 ft	Latitude:	39° 40' 27.10 N
From:	Lat/Long	Easting:	2,262,632.54 ft	Longitude:	108° 7' 11.76 W
Position Uncertainty:	0.0 ft	Slot Radius:	in	Grid Convergence:	-1.65 °

Well	8506B-25 F25 496					
Well Position	+N/-S	0.0 ft	Northing:	1,681,117.16 ft	Latitude:	39° 40' 27.38 N
	+E/-W	0.0 ft	Easting:	2,262,691.57 ft	Longitude:	108° 7' 11.01 W
Position Uncertainty		0.0 ft	Wellhead Elevation:	ft	Ground Level:	8,298.0 ft

Wellbore	DD				
Magnetics	Model Name	Sample Date	Declination (°)	Dip Angle (°)	Field Strength (nT)
	IGRF200510	9/1/2009	10.64	65.92	52,519

Design	Plan #1			
Audit Notes:				
Version:	Phase:	PLAN	Tie On Depth:	0.0
Vertical Section:	Depth From (TVD) (ft)	+N/-S (ft)	+E/-W (ft)	Direction (°)
	0.0	0.0	0.0	358.92

Plan Sections										
Measured Depth (ft)	Inclination (°)	Azimuth (°)	Vertical Depth (ft)	+N/-S (ft)	+E/-W (ft)	Dogleg Rate (°/100ft)	Build Rate (°/100ft)	Turn Rate (°/100ft)	TFO (°)	Target
0.0	0.00	0.00	0.0	0.0	0.0	0.00	0.00	0.00	0.00	
200.0	0.00	0.00	200.0	0.0	0.0	0.00	0.00	0.00	0.00	
325.1	3.75	358.92	325.0	4.1	-0.1	3.00	3.00	0.00	358.92	
8,412.4	3.75	358.92	8,395.0	533.5	-10.0	0.00	0.00	0.00	0.00	
8,537.5	0.00	0.00	8,520.0	537.6	-10.1	3.00	-3.00	0.00	180.00	8506B-25 F25 496 TC
12,197.5	0.00	0.00	12,180.0	537.6	-10.1	0.00	0.00	0.00	0.00	8506B-25 F25 496 Bt
13,447.5	0.00	0.00	13,430.0	537.6	-10.1	0.00	0.00	0.00	0.00	
13,697.5	0.00	0.00	13,680.0	537.6	-10.1	0.00	0.00	0.00	0.00	

Planning Report

Database:	US EDM 2003.21 Multi User Db	Local Co-ordinate Reference:	Well 8506B-25 F25 496
Company:	EnCana Oil & Gas (USA) Inc	TVD Reference:	KBE @ 8320.0ft (Original Well Elev)
Project:	Story Gulch	MD Reference:	KBE @ 8320.0ft (Original Well Elev)
Site:	F25 496	North Reference:	True
Well:	8506B-25 F25 496	Survey Calculation Method:	Minimum Curvature
Wellbore:	DD		
Design:	Plan #1		

Planned Survey

Measured Depth (ft)	Inclination (°)	Azimuth (°)	Vertical Depth (ft)	+N/-S (ft)	+E/-W (ft)	Vertical Section (ft)	Dogleg Rate (°/100ft)	Build Rate (°/100ft)	Comments / Formations
0.0	0.00	0.00	0.0	0.0	0.0	0.0	0.00	0.00	
100.0	0.00	0.00	100.0	0.0	0.0	0.0	0.00	0.00	
200.0	0.00	0.00	200.0	0.0	0.0	0.0	0.00	0.00	KOP = 200' MD
300.0	3.00	358.92	300.0	2.6	0.0	2.6	3.00	3.00	
325.1	3.75	358.92	325.0	4.1	-0.1	4.1	3.00	3.00	EOB at Inc. = 3.75°
400.0	3.75	358.92	399.7	9.0	-0.2	9.0	0.00	0.00	
500.0	3.75	358.92	499.5	15.5	-0.3	15.5	0.00	0.00	
600.0	3.75	358.92	599.3	22.1	-0.4	22.1	0.00	0.00	
700.0	3.75	358.92	699.1	28.6	-0.5	28.6	0.00	0.00	
800.0	3.75	358.92	798.9	35.2	-0.7	35.2	0.00	0.00	
900.0	3.75	358.92	898.7	41.7	-0.8	41.7	0.00	0.00	
1,000.0	3.75	358.92	998.5	48.3	-0.9	48.3	0.00	0.00	
1,100.0	3.75	358.92	1,098.2	54.8	-1.0	54.8	0.00	0.00	
1,159.9	3.75	358.92	1,158.0	58.7	-1.1	58.8	0.00	0.00	Paludal
1,200.0	3.75	358.92	1,198.0	61.4	-1.2	61.4	0.00	0.00	
1,300.0	3.75	358.92	1,297.8	67.9	-1.3	67.9	0.00	0.00	
1,400.0	3.75	358.92	1,397.6	74.5	-1.4	74.5	0.00	0.00	
1,500.0	3.75	358.92	1,497.4	81.0	-1.5	81.0	0.00	0.00	
1,600.0	3.75	358.92	1,597.2	87.6	-1.6	87.6	0.00	0.00	
1,700.0	3.75	358.92	1,697.0	94.1	-1.8	94.1	0.00	0.00	
1,783.2	3.75	358.92	1,780.0	99.5	-1.9	99.6	0.00	0.00	Mahog Bench
1,800.0	3.75	358.92	1,796.7	100.6	-1.9	100.7	0.00	0.00	
1,900.0	3.75	358.92	1,896.5	107.2	-2.0	107.2	0.00	0.00	
2,000.0	3.75	358.92	1,996.3	113.7	-2.1	113.8	0.00	0.00	
2,100.0	3.75	358.92	2,096.1	120.3	-2.3	120.3	0.00	0.00	
2,200.0	3.75	358.92	2,195.9	126.8	-2.4	126.9	0.00	0.00	
2,300.0	3.75	358.92	2,295.7	133.4	-2.5	133.4	0.00	0.00	
2,400.0	3.75	358.92	2,395.5	139.9	-2.6	139.9	0.00	0.00	
2,500.0	3.75	358.92	2,495.2	146.5	-2.8	146.5	0.00	0.00	
2,600.0	3.75	358.92	2,595.0	153.0	-2.9	153.0	0.00	0.00	
2,700.0	3.75	358.92	2,694.8	159.6	-3.0	159.6	0.00	0.00	
2,800.0	3.75	358.92	2,794.6	166.1	-3.1	166.1	0.00	0.00	
2,900.0	3.75	358.92	2,894.4	172.7	-3.2	172.7	0.00	0.00	
3,000.0	3.75	358.92	2,994.2	179.2	-3.4	179.2	0.00	0.00	
3,100.0	3.75	358.92	3,094.0	185.7	-3.5	185.8	0.00	0.00	
3,200.0	3.75	358.92	3,193.7	192.3	-3.6	192.3	0.00	0.00	
3,300.0	3.75	358.92	3,293.5	198.8	-3.7	198.9	0.00	0.00	
3,400.0	3.75	358.92	3,393.3	205.4	-3.9	205.4	0.00	0.00	
3,500.0	3.75	358.92	3,493.1	211.9	-4.0	212.0	0.00	0.00	
3,600.0	3.75	358.92	3,592.9	218.5	-4.1	218.5	0.00	0.00	
3,700.0	3.75	358.92	3,692.7	225.0	-4.2	225.1	0.00	0.00	
3,800.0	3.75	358.92	3,792.5	231.6	-4.4	231.6	0.00	0.00	
3,900.0	3.75	358.92	3,892.2	238.1	-4.5	238.2	0.00	0.00	
4,000.0	3.75	358.92	3,992.0	244.7	-4.6	244.7	0.00	0.00	
4,100.0	3.75	358.92	4,091.8	251.2	-4.7	251.2	0.00	0.00	
4,200.0	3.75	358.92	4,191.6	257.8	-4.8	257.8	0.00	0.00	
4,300.0	3.75	358.92	4,291.4	264.3	-5.0	264.3	0.00	0.00	
4,400.0	3.75	358.92	4,391.2	270.8	-5.1	270.9	0.00	0.00	
4,500.0	3.75	358.92	4,491.0	277.4	-5.2	277.4	0.00	0.00	
4,600.0	3.75	358.92	4,590.7	283.9	-5.3	284.0	0.00	0.00	
4,700.0	3.75	358.92	4,690.5	290.5	-5.5	290.5	0.00	0.00	
4,800.0	3.75	358.92	4,790.3	297.0	-5.6	297.1	0.00	0.00	

Planning Report

Database:	US EDM 2003.21 Multi User Db	Local Co-ordinate Reference:	Well 8506B-25 F25 496
Company:	EnCana Oil & Gas (USA) Inc	TVD Reference:	KBE @ 8320.0ft (Original Well Elev)
Project:	Story Gulch	MD Reference:	KBE @ 8320.0ft (Original Well Elev)
Site:	F25 496	North Reference:	True
Well:	8506B-25 F25 496	Survey Calculation Method:	Minimum Curvature
Wellbore:	DD		
Design:	Plan #1		

Planned Survey

Measured Depth (ft)	Inclination (°)	Azimuth (°)	Vertical Depth (ft)	+N/-S (ft)	+E/-W (ft)	Vertical Section (ft)	Dogleg Rate (°/100ft)	Build Rate (°/100ft)	Comments / Formations
4,900.0	3.75	358.92	4,890.1	303.6	-5.7	303.6	0.00	0.00	
5,000.0	3.75	358.92	4,989.9	310.1	-5.8	310.2	0.00	0.00	
5,100.0	3.75	358.92	5,089.7	316.7	-6.0	316.7	0.00	0.00	
5,200.0	3.75	358.92	5,189.5	323.2	-6.1	323.3	0.00	0.00	
5,300.0	3.75	358.92	5,289.2	329.8	-6.2	329.8	0.00	0.00	
5,391.0	3.75	358.92	5,380.0	335.7	-6.3	335.8	0.00	0.00	Was G
5,400.0	3.75	358.92	5,389.0	336.3	-6.3	336.4	0.00	0.00	
5,500.0	3.75	358.92	5,488.8	342.8	-6.4	342.9	0.00	0.00	
5,600.0	3.75	358.92	5,588.6	349.4	-6.6	349.5	0.00	0.00	
5,700.0	3.75	358.92	5,688.4	355.9	-6.7	356.0	0.00	0.00	
5,800.0	3.75	358.92	5,788.2	362.5	-6.8	362.6	0.00	0.00	
5,900.0	3.75	358.92	5,887.9	369.0	-6.9	369.1	0.00	0.00	
6,000.0	3.75	358.92	5,987.7	375.6	-7.1	375.6	0.00	0.00	
6,100.0	3.75	358.92	6,087.5	382.1	-7.2	382.2	0.00	0.00	
6,200.0	3.75	358.92	6,187.3	388.7	-7.3	388.7	0.00	0.00	
6,300.0	3.75	358.92	6,287.1	395.2	-7.4	395.3	0.00	0.00	
6,400.0	3.75	358.92	6,386.9	401.8	-7.6	401.8	0.00	0.00	
6,500.0	3.75	358.92	6,486.7	408.3	-7.7	408.4	0.00	0.00	
6,600.0	3.75	358.92	6,586.4	414.9	-7.8	414.9	0.00	0.00	
6,700.0	3.75	358.92	6,686.2	421.4	-7.9	421.5	0.00	0.00	
6,800.0	3.75	358.92	6,786.0	427.9	-8.0	428.0	0.00	0.00	
6,900.0	3.75	358.92	6,885.8	434.5	-8.2	434.6	0.00	0.00	
7,000.0	3.75	358.92	6,985.6	441.0	-8.3	441.1	0.00	0.00	
7,100.0	3.75	358.92	7,085.4	447.6	-8.4	447.7	0.00	0.00	
7,200.0	3.75	358.92	7,185.2	454.1	-8.5	454.2	0.00	0.00	
7,300.0	3.75	358.92	7,284.9	460.7	-8.7	460.8	0.00	0.00	
7,400.0	3.75	358.92	7,384.7	467.2	-8.8	467.3	0.00	0.00	
7,500.0	3.75	358.92	7,484.5	473.8	-8.9	473.9	0.00	0.00	
7,600.0	3.75	358.92	7,584.3	480.3	-9.0	480.4	0.00	0.00	
7,700.0	3.75	358.92	7,684.1	486.9	-9.2	487.0	0.00	0.00	
7,800.0	3.75	358.92	7,783.9	493.4	-9.3	493.5	0.00	0.00	
7,900.0	3.75	358.92	7,883.7	500.0	-9.4	500.0	0.00	0.00	
8,000.0	3.75	358.92	7,983.4	506.5	-9.5	506.6	0.00	0.00	
8,100.0	3.75	358.92	8,083.2	513.0	-9.6	513.1	0.00	0.00	
8,200.0	3.75	358.92	8,183.0	519.6	-9.8	519.7	0.00	0.00	
8,300.0	3.75	358.92	8,282.8	526.1	-9.9	526.2	0.00	0.00	
8,400.0	3.75	358.92	8,382.6	532.7	-10.0	532.8	0.00	0.00	
8,412.4	3.75	358.92	8,395.0	533.5	-10.0	533.6	0.00	0.00	Start Drop -3.00
8,497.5	1.20	358.92	8,480.0	537.2	-10.1	537.3	3.00	-3.00	Williams fork
8,500.0	1.13	358.92	8,482.5	537.2	-10.1	537.3	3.00	-3.00	
8,537.5	0.00	0.00	8,520.0	537.6	-10.1	537.7	3.00	-3.00	EOD at Inc. = 0° - Top of Gas - 8506B-25 F25 4
8,600.0	0.00	0.00	8,582.5	537.6	-10.1	537.7	0.00	0.00	
8,700.0	0.00	0.00	8,682.5	537.6	-10.1	537.7	0.00	0.00	
8,800.0	0.00	0.00	8,782.5	537.6	-10.1	537.7	0.00	0.00	
8,900.0	0.00	0.00	8,882.5	537.6	-10.1	537.7	0.00	0.00	
9,000.0	0.00	0.00	8,982.5	537.6	-10.1	537.7	0.00	0.00	
9,100.0	0.00	0.00	9,082.5	537.6	-10.1	537.7	0.00	0.00	
9,197.5	0.00	0.00	9,180.0	537.6	-10.1	537.7	0.00	0.00	Price_GR
9,200.0	0.00	0.00	9,182.5	537.6	-10.1	537.7	0.00	0.00	
9,300.0	0.00	0.00	9,282.5	537.6	-10.1	537.7	0.00	0.00	
9,400.0	0.00	0.00	9,382.5	537.6	-10.1	537.7	0.00	0.00	
9,500.0	0.00	0.00	9,482.5	537.6	-10.1	537.7	0.00	0.00	

Planning Report

Database:	US EDM 2003.21 Multi User Db	Local Co-ordinate Reference:	Well 8506B-25 F25 496
Company:	EnCana Oil & Gas (USA) Inc	TVD Reference:	KBE @ 8320.0ft (Original Well Elev)
Project:	Story Gulch	MD Reference:	KBE @ 8320.0ft (Original Well Elev)
Site:	F25 496	North Reference:	True
Well:	8506B-25 F25 496	Survey Calculation Method:	Minimum Curvature
Wellbore:	DD		
Design:	Plan #1		

Planned Survey									
Measured Depth (ft)	Inclination (°)	Azimuth (°)	Vertical Depth (ft)	+N/-S (ft)	+E/-W (ft)	Vertical Section (ft)	Dogleg Rate (°/100ft)	Build Rate (°/100ft)	Comments / Formations
9,600.0	0.00	0.00	9,582.5	537.6	-10.1	537.7	0.00	0.00	
9,700.0	0.00	0.00	9,682.5	537.6	-10.1	537.7	0.00	0.00	
9,800.0	0.00	0.00	9,782.5	537.6	-10.1	537.7	0.00	0.00	
9,900.0	0.00	0.00	9,882.5	537.6	-10.1	537.7	0.00	0.00	
10,000.0	0.00	0.00	9,982.5	537.6	-10.1	537.7	0.00	0.00	
10,100.0	0.00	0.00	10,082.5	537.6	-10.1	537.7	0.00	0.00	
10,200.0	0.00	0.00	10,182.5	537.6	-10.1	537.7	0.00	0.00	
10,300.0	0.00	0.00	10,282.5	537.6	-10.1	537.7	0.00	0.00	
10,400.0	0.00	0.00	10,382.5	537.6	-10.1	537.7	0.00	0.00	
10,500.0	0.00	0.00	10,482.5	537.6	-10.1	537.7	0.00	0.00	
10,600.0	0.00	0.00	10,582.5	537.6	-10.1	537.7	0.00	0.00	
10,700.0	0.00	0.00	10,682.5	537.6	-10.1	537.7	0.00	0.00	
10,800.0	0.00	0.00	10,782.5	537.6	-10.1	537.7	0.00	0.00	
10,900.0	0.00	0.00	10,882.5	537.6	-10.1	537.7	0.00	0.00	
11,000.0	0.00	0.00	10,982.5	537.6	-10.1	537.7	0.00	0.00	
11,100.0	0.00	0.00	11,082.5	537.6	-10.1	537.7	0.00	0.00	
11,200.0	0.00	0.00	11,182.5	537.6	-10.1	537.7	0.00	0.00	
11,300.0	0.00	0.00	11,282.5	537.6	-10.1	537.7	0.00	0.00	
11,400.0	0.00	0.00	11,382.5	537.6	-10.1	537.7	0.00	0.00	
11,500.0	0.00	0.00	11,482.5	537.6	-10.1	537.7	0.00	0.00	
11,600.0	0.00	0.00	11,582.5	537.6	-10.1	537.7	0.00	0.00	
11,700.0	0.00	0.00	11,682.5	537.6	-10.1	537.7	0.00	0.00	
11,800.0	0.00	0.00	11,782.5	537.6	-10.1	537.7	0.00	0.00	
11,900.0	0.00	0.00	11,882.5	537.6	-10.1	537.7	0.00	0.00	
12,000.0	0.00	0.00	11,982.5	537.6	-10.1	537.7	0.00	0.00	
12,100.0	0.00	0.00	12,082.5	537.6	-10.1	537.7	0.00	0.00	
12,197.5	0.00	0.00	12,180.0	537.6	-10.1	537.7	0.00	0.00	Rollins - 8506B-25 F25 496 BHL
12,200.0	0.00	0.00	12,182.5	537.6	-10.1	537.7	0.00	0.00	
12,300.0	0.00	0.00	12,282.5	537.6	-10.1	537.7	0.00	0.00	
12,400.0	0.00	0.00	12,382.5	537.6	-10.1	537.7	0.00	0.00	
12,500.0	0.00	0.00	12,482.5	537.6	-10.1	537.7	0.00	0.00	
12,527.5	0.00	0.00	12,510.0	537.6	-10.1	537.7	0.00	0.00	Cozzette
12,600.0	0.00	0.00	12,582.5	537.6	-10.1	537.7	0.00	0.00	
12,700.0	0.00	0.00	12,682.5	537.6	-10.1	537.7	0.00	0.00	
12,717.5	0.00	0.00	12,700.0	537.6	-10.1	537.7	0.00	0.00	Corcoran
12,800.0	0.00	0.00	12,782.5	537.6	-10.1	537.7	0.00	0.00	
12,900.0	0.00	0.00	12,882.5	537.6	-10.1	537.7	0.00	0.00	
12,997.5	0.00	0.00	12,980.0	537.6	-10.1	537.7	0.00	0.00	Sego
13,000.0	0.00	0.00	12,982.5	537.6	-10.1	537.7	0.00	0.00	
13,100.0	0.00	0.00	13,082.5	537.6	-10.1	537.7	0.00	0.00	
13,197.5	0.00	0.00	13,180.0	537.6	-10.1	537.7	0.00	0.00	L Sego
13,200.0	0.00	0.00	13,182.5	537.6	-10.1	537.7	0.00	0.00	
13,300.0	0.00	0.00	13,282.5	537.6	-10.1	537.7	0.00	0.00	
13,400.0	0.00	0.00	13,382.5	537.6	-10.1	537.7	0.00	0.00	
13,447.5	0.00	0.00	13,430.0	537.6	-10.1	537.7	0.00	0.00	TD at 13,447.5' MD
13,500.0	0.00	0.00	13,482.5	537.6	-10.1	537.7	0.00	0.00	
13,600.0	0.00	0.00	13,582.5	537.6	-10.1	537.7	0.00	0.00	
13,697.5	0.00	0.00	13,680.0	537.6	-10.1	537.7	0.00	0.00	Permit TD at 13,697.5' MD

Planning Report

Database:	US EDM 2003.21 Multi User Db	Local Co-ordinate Reference:	Well 8506B-25 F25 496
Company:	EnCana Oil & Gas (USA) Inc	TVD Reference:	KBE @ 8320.0ft (Original Well Elev)
Project:	Story Gulch	MD Reference:	KBE @ 8320.0ft (Original Well Elev)
Site:	F25 496	North Reference:	True
Well:	8506B-25 F25 496	Survey Calculation Method:	Minimum Curvature
Wellbore:	DD		
Design:	Plan #1		

Targets									
Target Name									
- hit/miss target	Dip Angle	Dip Dir.	TVD	+N/-S	+E/-W	Northing	Easting	Latitude	Longitude
- Shape	(°)	(°)	(ft)	(ft)	(ft)	(ft)	(ft)		
8506B-25 F25 496 TGT	0.00	0.00	8,520.0	537.6	-10.1	1,681,654.82	2,262,696.97	39° 40' 32.69 N	108° 7' 11.14 W
- plan hits target center									
- Point									
8506B-25 F25 496 BHL	0.00	0.00	12,180.0	537.6	-10.1	1,681,654.82	2,262,696.97	39° 40' 32.69 N	108° 7' 11.14 W
- plan hits target center									
- Rectangle (sides W30.0 H50.0 D0.0)									

Formations						
Measured Depth	Vertical Depth	Name	Lithology	Dip	Dip Direction	
(ft)	(ft)			(°)	(°)	
1,159.9	1,158.0	Paludal		0.00		
1,783.2	1,780.0	Mahog Bench		0.00		
5,391.0	5,380.0	Was G		0.00		
8,497.5	8,480.0	Williams fork		0.00		
8,537.5	8,520.0	Top of Gas		0.00		
9,197.5	9,180.0	Price _GR		0.00		
12,197.5	12,180.0	Rollins		0.00		
12,527.5	12,510.0	Cozzette		0.00		
12,717.5	12,700.0	Corcoran		0.00		
12,997.5	12,980.0	Sego		0.00		
13,197.5	13,180.0	L Sego		0.00		

Plan Annotations				
Measured Depth	Vertical Depth	Local Coordinates		Comment
(ft)	(ft)	+N/-S (ft)	+E/-W (ft)	
200.0	200.0	0.0	0.0	KOP = 200' MD
325.1	325.0	4.1	-0.1	EOB at Inc. = 3.75°
8,412.4	8,395.0	533.5	-10.0	Start Drop -3.00
8,537.5	8,520.0	537.6	-10.1	EOD at Inc. = 0°
13,447.5	13,430.0	537.6	-10.1	TD at 13,447.5' MD
13,697.5	13,680.0	537.6	-10.1	Permit TD at 13,697.5' MD