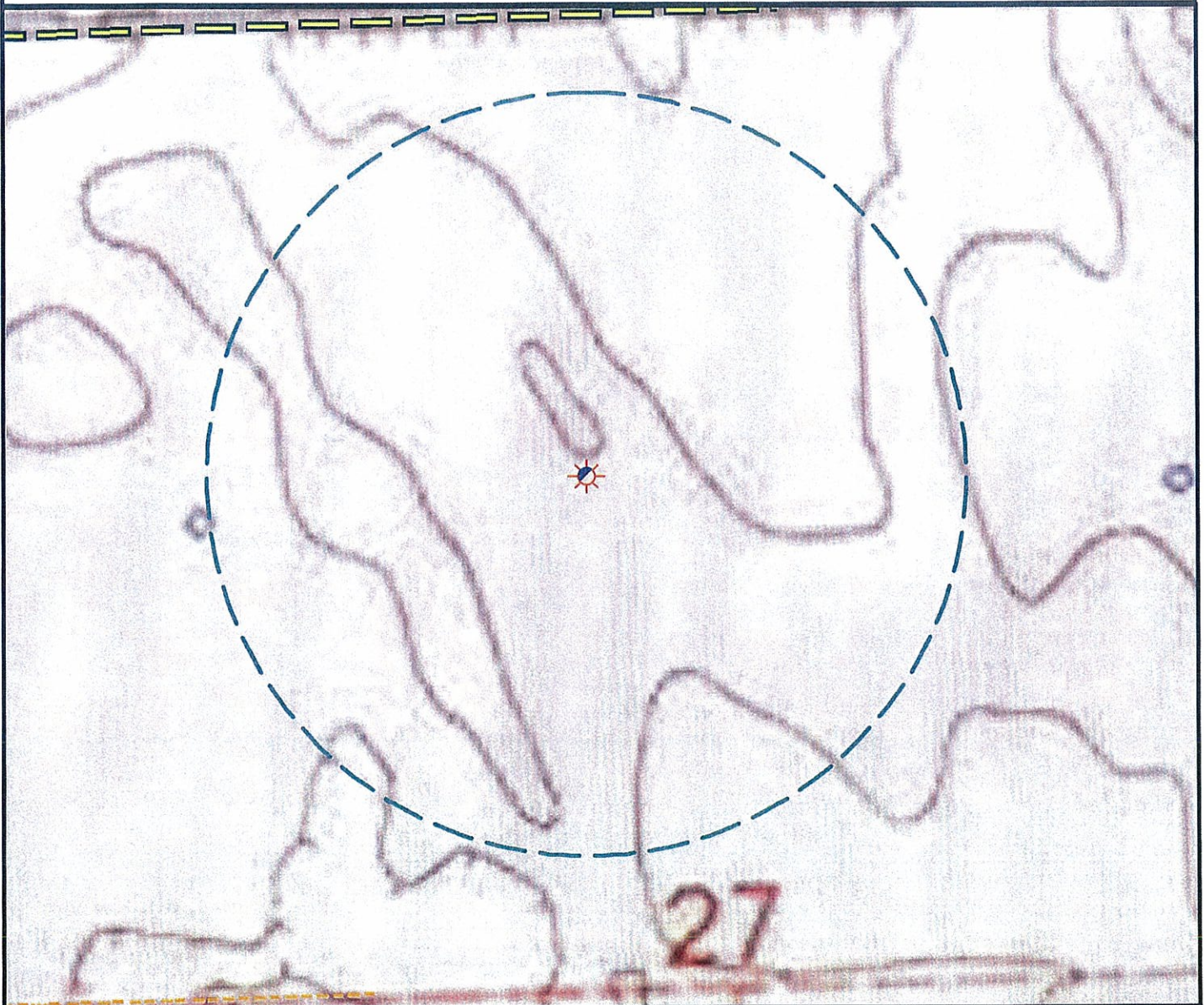
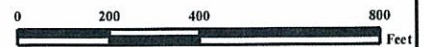


# Hydrology Map



There are no surface waters within a 1000' radius of the Oil & Gas location.



## Legend

- |                      |                     |
|----------------------|---------------------|
| Proposed Well        | Building/Residence  |
| Existing Well        | Oil & Gas Equipment |
| Water Well           | Water Body          |
| Pedestal             | Utility Box         |
| CattleGuard/Gate     | Railroad            |
| Bridge               | Sewer               |
| ECD                  | Fence               |
| 1000' Radius         | Overhead Power Line |
| Facilities Enclosure | Pipeline            |
|                      | Access Road         |
|                      | Ditch/Canal         |

## Hydrology Map

### Chapman 27-03

Surface Location: T1S R45W S27

Field Date: 10/12/2009  
 Drawing Date: 10/15/2009  
 Drafter: DMM  
 Checked By: MPS

Prepared for:  
 ROSETA RESOURCES  
 OPERATING LP  
 717 Texas Avenue, Ste. 2800  
 Houston, TX 77002



Use our resources to find yours!  
[www.petro-fs.com](http://www.petro-fs.com)

1801 W. 13th Ave Suite 207  
 Denver, CO 80204  
 (303) 928-7128  
 111 E. Third Street  
 Rifle, CO 81650  
 (970) 625-4740