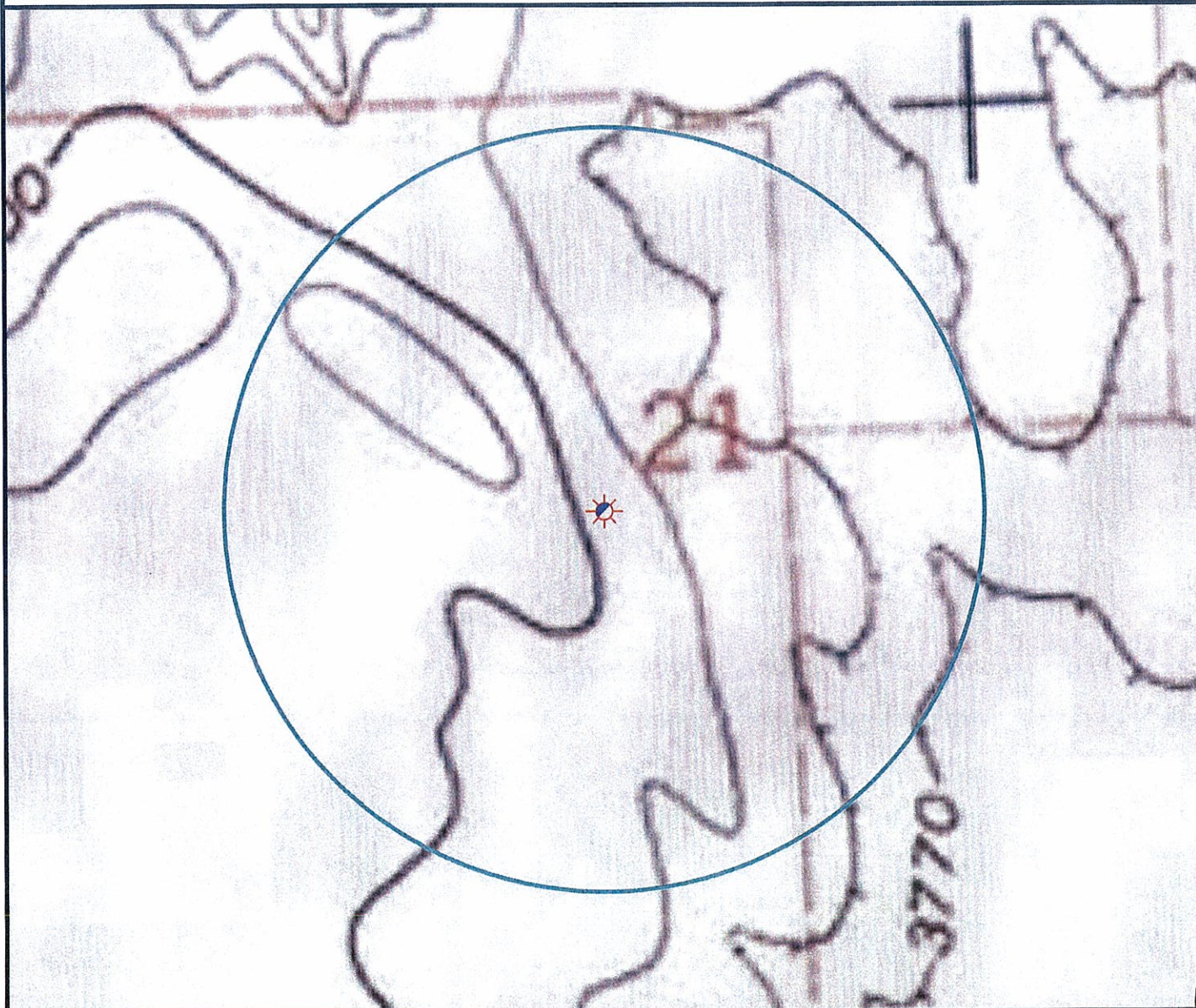


Hydrology Map



There are no surface waters within a 1000' radius of the Oil & Gas location.



0 200 400 800 Feet

Legend

- | | |
|----------------------|-----------------------|
| Proposed Well | Building/Residence |
| Existing Well | Oil & Gas Equipment |
| Water Well | Water Body |
| Pedestal | Utility Box |
| CattleGuard/Gate | Railroad |
| Bridge | Fence |
| ECD | Overhead Power Line |
| 1000' Radius | Pipeline |
| Facilities Enclosure | Access Road |
| | Ditch/Canal |
| | Concrete Walled Ditch |

1000ft Radius Map of Surface Water and Riparian Areas

FONTE 21-11

Surface Location: T1N R44W S21

Field Date: 11/02/2009
 Drawing Date: 11/16/2009
 Drafter: CGR
 Checked By: MPS

Prepared for:
ROSETTA RESOURCES
 OPERATING LP



Use our resources to find yours!
www.petro-fs.com

1801 W. 13th Ave Suite 207
 Denver, CO 80204
 (303) 928-7128
 111 E. Third Street
 Rifle, CO 81650
 (970) 625-4740