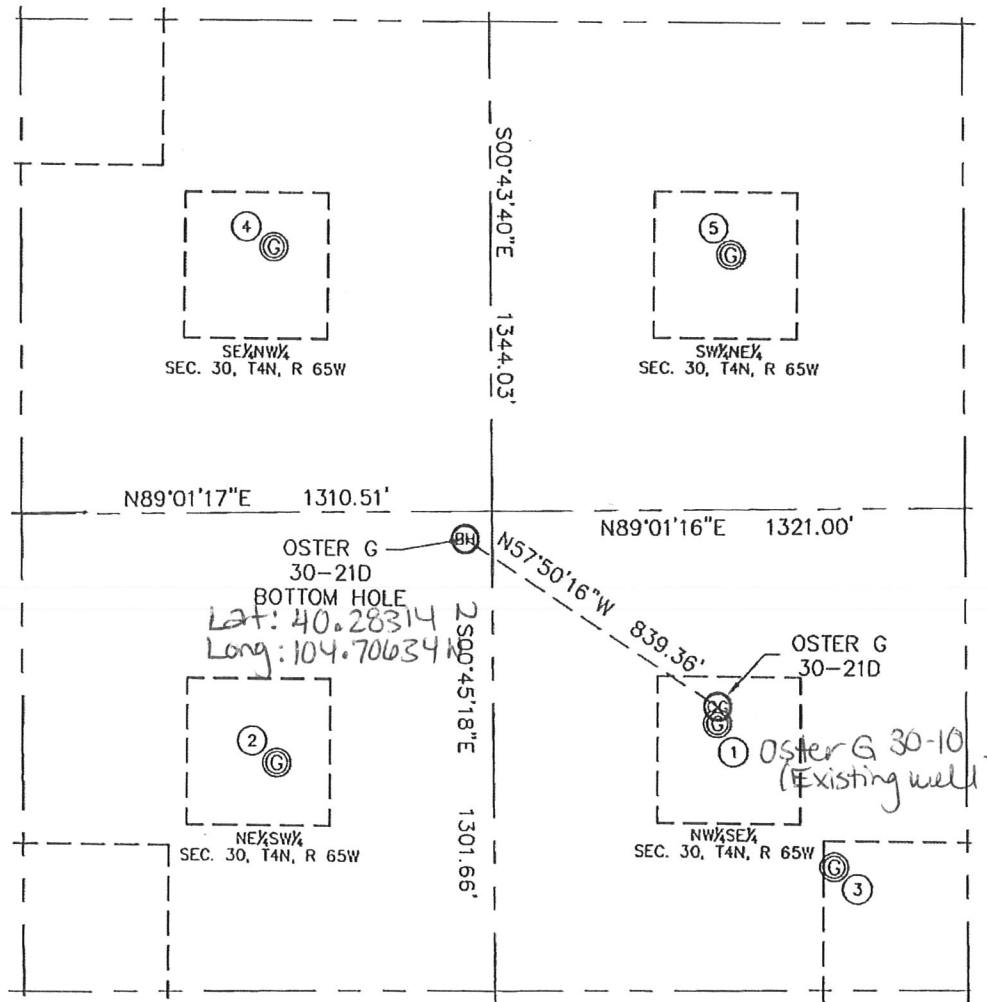


# MULTI-WELL PLAN

KING SURVEYORS, INC. 650 E. GARDEN DR. WINDSOR, CO 80550  
SITE SKETCH

SECTION: 30  
TOWNSHIP: 4N  
RANGE: 65W



- |                  |                  |                   |                  |                  |
|------------------|------------------|-------------------|------------------|------------------|
| ①                | ②                | ③                 | ④                | ⑤                |
| OSTER G 30-10    | SCHMIDT 30-11G   | OSTER-MOLANDER A1 | SCHMIDT 30-6G    | HSR-MORROW 7-30  |
| NW 1/4 SE 1/4    | NE 1/4 SW 1/4    | NW 1/4 SE 1/4     | SE 1/4 NW 1/4    | SW 1/4 NE 1/4    |
| 2030' FSL        | 1916' FSL        | 1640' FSL         | 1976' FNL        | 1977' FNL        |
| 2011' FEL        | 2034' FWL        | 1684' FEL         | 2030' FWL        | 1968' FEL        |
| LAT-40.28177°N   | LAT-40.28146°N   | LAT-40.28069°N    | LAT-40.28532°N   | LAT-40.28527°N   |
| LONG-104.70381°W | LONG-104.70823°W | LONG-104.70265°W  | LONG-104.70826°W | LONG-104.70366°W |
| PDOP: 1.0        | PDOP: 2.0        | PDOP: 1.4         | PDOP: 2.4        | PDOP: 1.0        |
| ELEV: 4826       | ELEV: 4814       | ELEV: 4835        | ELEV: 4802       | ELEV: 4809       |

