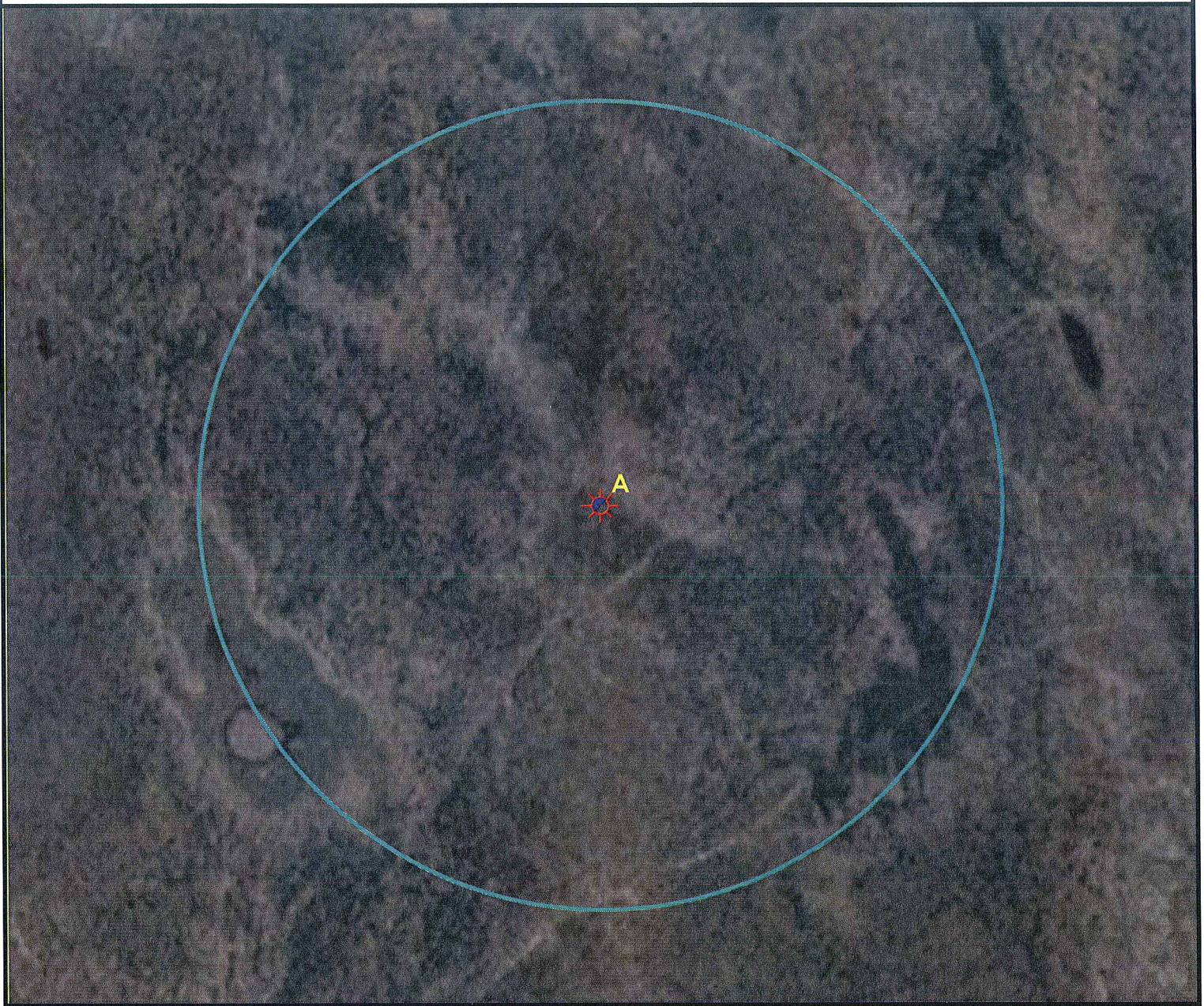
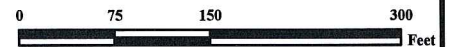


Location Drawing



A. Proposed Well LINK-STROM 13-14.

There are no visible improvements within 400' of the proposed Oil & Gas location.



Legend

- | | |
|----------------------|-----------------------|
| Proposed Well | Building/Residence |
| Existing Well | Oil & Gas Equipment |
| Water Well | Water Body |
| Pedestal | Utility Box |
| CattleGuard/Gate | Railroad |
| Bridge | Fence |
| ECD | Overhead Power Line |
| 400' Radius | Pipeline |
| Facilities Enclosure | Access Road |
| | Ditch/Canal |
| | Concrete Walled Ditch |

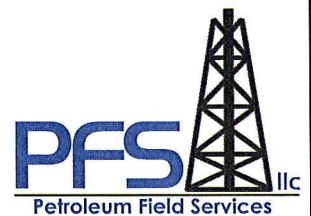
400ft Radius Map

LINK-STROM 13-14

Surface Location: T2S R45W S13
Description of surface use: Improved Pasture

Field Date: 11/02/2009
Drawing Date: 12/3/2009
Drafter: CGR
Checked By: MPS
Revision: 1
Aerial Photo supplied by NAIP - 2005

Prepared for:
**ROSETTA RESOURCES
OPERATING LP**
717 Texas Avenue, Ste 2800
Houston, TX 77002



Use our resources to find yours!
www.petro-fs.com

1801 W. 13th Ave Suite 207
Denver, CO 80204
(303) 928-7128
111 E. Third Street
Rifle, CO 81650
(970) 625-4740