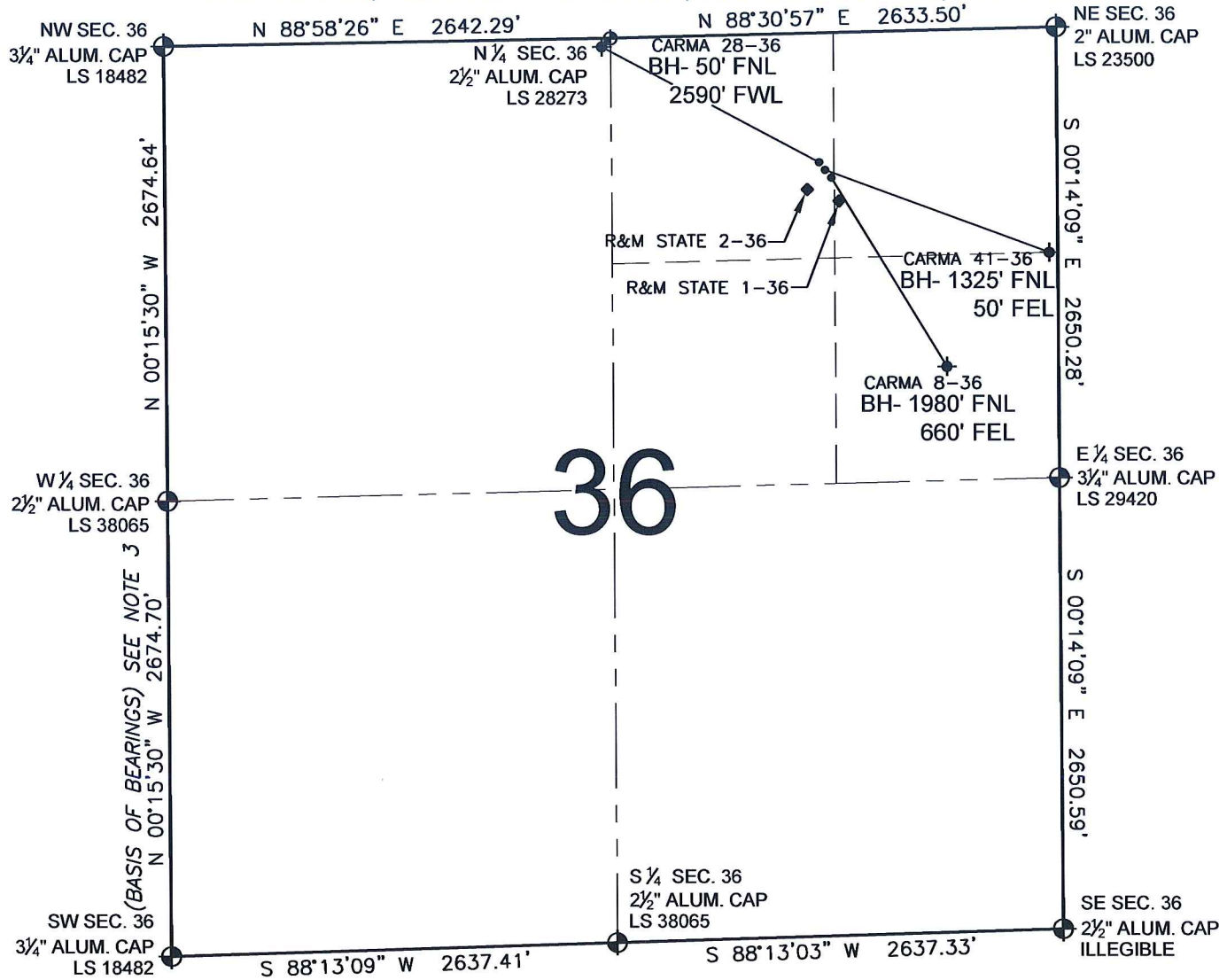


PAD DRAWING - CARMA 3 PAD

SECTION 36, TOWNSHIP 3 NORTH, RANGE 68 WEST, 6TH P.M.



LEGEND

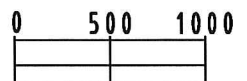
- = EXISTING MONUMENT
 = BOTTOM HOLE
 BH= BOTTOM HOLE
 = PROPOSED WELL
 = EXISTING WELL

NOTES:

- THIS SURVEY WAS DONE BY GPS METHODS AND CONFORMS TO THE MINIMUM STANDARDS SET BY THE C.O.G.C.C., RULE NO. 215
- ELEVATIONS SHOWN AT THE WELL HEAD, AS WELL AS HORIZONTAL CONTROL, ARE BASED ON GPS-RTK VALUES DERIVED FROM DOING 2-HOUR STATIC GPS SESSIONS AND REDUCTIONS USING O.P.U.S. SOLUTIONS.
VERTICAL = NAVD88; HORIZONTAL = NAD83/92
- THE BEARINGS SHOWN HEREON ARE BASED ON GPS OBSERVATIONS BETWEEN THE MONUMENTS SHOWN HEREON AS FOUND ON THE FIELD DATE BELOW.
- DISTANCES SHOWN ARE AT GROUND LEVEL, AS MEASURED IN THE FIELD, WITH TIES TO WELLS MEASURED AT A PERPENDICULAR TO SECTION LINES.

NOTES:

- CARMA 28-36 TO BE AT 831' FNL, 1356' FEL.
 BOTTOM HOLE AT 50' FNL & 2590' FWL.
 CARMA 41-36 TO BE AT 842' FNL, 1344' FEL.
 BOTTOM HOLE AT 1325' FNL & 50' FEL.
 CARMA 8-36 TO BE AT 853' FNL, 1332' FEL.
 BOTTOM HOLE AT 1980' FNL & 660' FEL.
 R&M STATE 2-36 IS 888' FNL, 1365' FEL.
 R&M STATE 1-36 IS 939' FNL, 1309' FEL.



SCALE: 1"=1000'

REVISIONS

INITIAL	DATE

PREPARED BY:

PFS

Petroleum Field Services, LLC
1801 W. 13th Ave.
Denver, CO 80204



KERR-MCGEE OIL & GAS ONSHORE LP

FIELD DATE:
11-18-09

DRAWING DATE:
11-20-09

BY:
SMF

PAD NAME:

CARMA 3 PAD

SURFACE LOCATION:

WELD COUNTY, COLORADO
NW 1/4 NE 1/4, SEC. 36, T3N, R68W