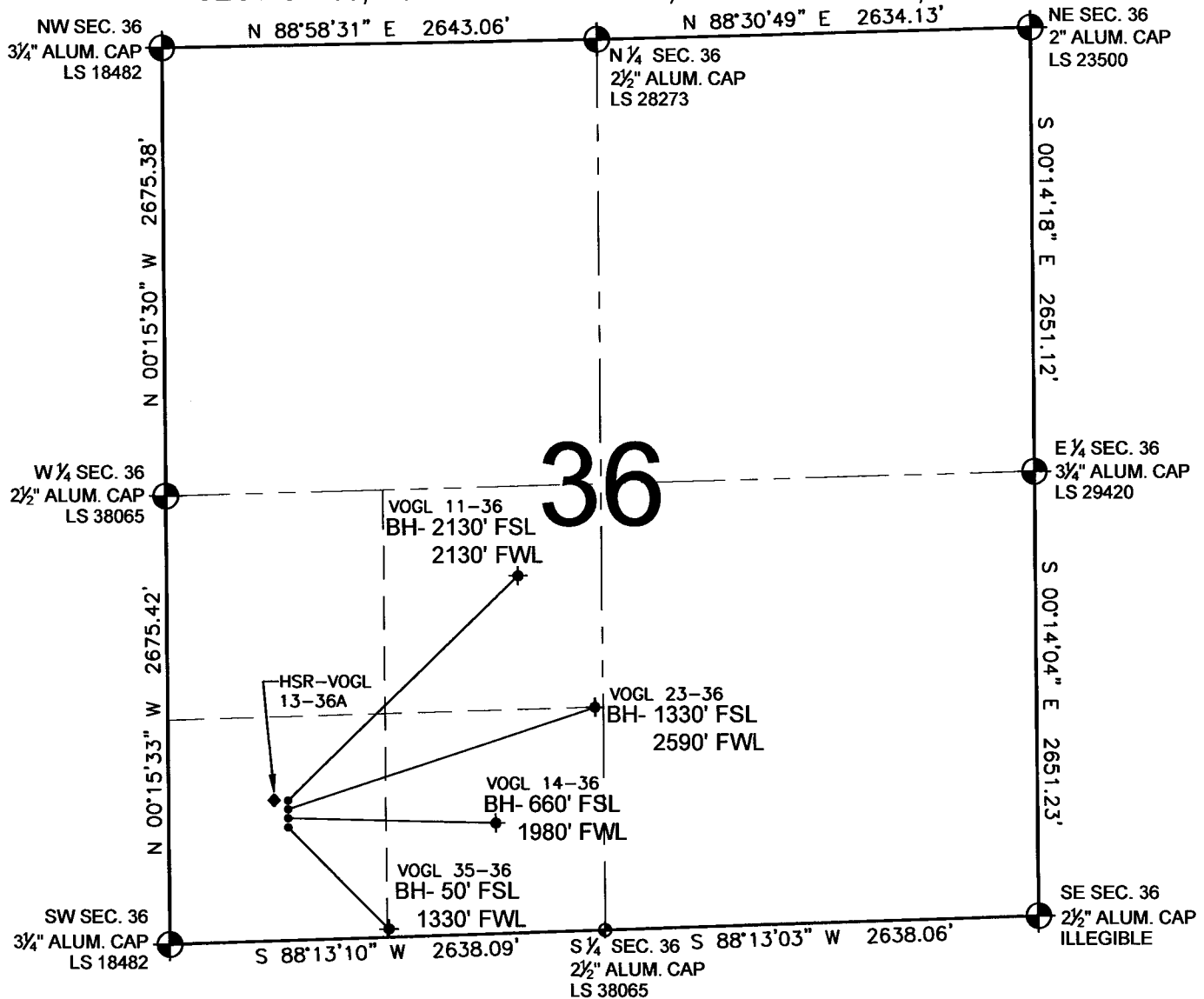


PAD DRAWING - VOGL 4 PAD

SECTION 36, TOWNSHIP 3 NORTH, RANGE 68 WEST, 6TH P.M.



NOTES:

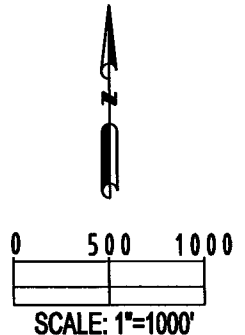
- THIS SURVEY WAS DONE BY GPS METHODS AND CONFORMS TO THE MINIMUM STANDARDS SET BY THE C.O.G.C.C., RULE NO. 215
- ELEVATIONS SHOWN AT THE WELL HEAD, AS WELL AS HORIZONTAL CONTROL, ARE BASED ON GPS-RTK VALUES DERIVED FROM DOING 2-HOUR STATIC GPS SESSIONS AND REDUCTIONS USING O.P.U.S. SOLUTIONS.
VERTICAL = NAVD88; HORIZONTAL = NAD83/92
- THE BEARINGS SHOWN HEREON ARE BASED ON GPS OBSERVATIONS BETWEEN THE MONUMENTS SHOWN HEREON AS FOUND ON THE FIELD DATE BELOW.
- DISTANCES SHOWN ARE AT GROUND LEVEL, AS MEASURED IN THE FIELD, WITH TIES TO WELLS MEASURED AT A PERPENDICULAR TO SECTION LINES.

LEGEND

- ⊕ = EXISTING MONUMENT ♦ = BOTTOM HOLE BH= BOTTOM HOLE
 ● = PROPOSED WELL ◆ = EXISTING WELL

NOTES:

VOGL 35-36 TO BE AT 674' FSL, 725' FWL.
 BOTTOM HOLE AT 50' FSL & 1330' FWL.
 VOGL 14-36 TO BE AT 690' FSL, 727' FWL.
 BOTTOM HOLE AT 660' FSL & 1980' FWL.
 VOGL 23-36 TO BE AT 706' FSL, 728' FWL.
 BOTTOM HOLE AT 1330' FSL & 2590' FWL.
 VOGL 11-36 TO BE AT 722' FSL, 729' FWL.
 BOTTOM HOLE AT 2130' FSL & 2130' FWL.
 HSR-VOGL 13-36A IS 722' FSL, 682' FWL.



REVISIONS		PREPARED BY: PFS Petroleum Field Services, LLC 1801 W. 13th Ave. Denver, CO 80204
INITIAL	DATE	

KERR-MCGEE OIL & GAS ONSHORE LP

FIELD DATE: 08-10-09	PAD NAME: VOGL 4 PAD
DRAWING DATE: 08-13-09	SURFACE LOCATION:
BY: SMF	WELD COUNTY, COLORADO SW 1/4 SW 1/4, SEC. 36, T3N, R68W