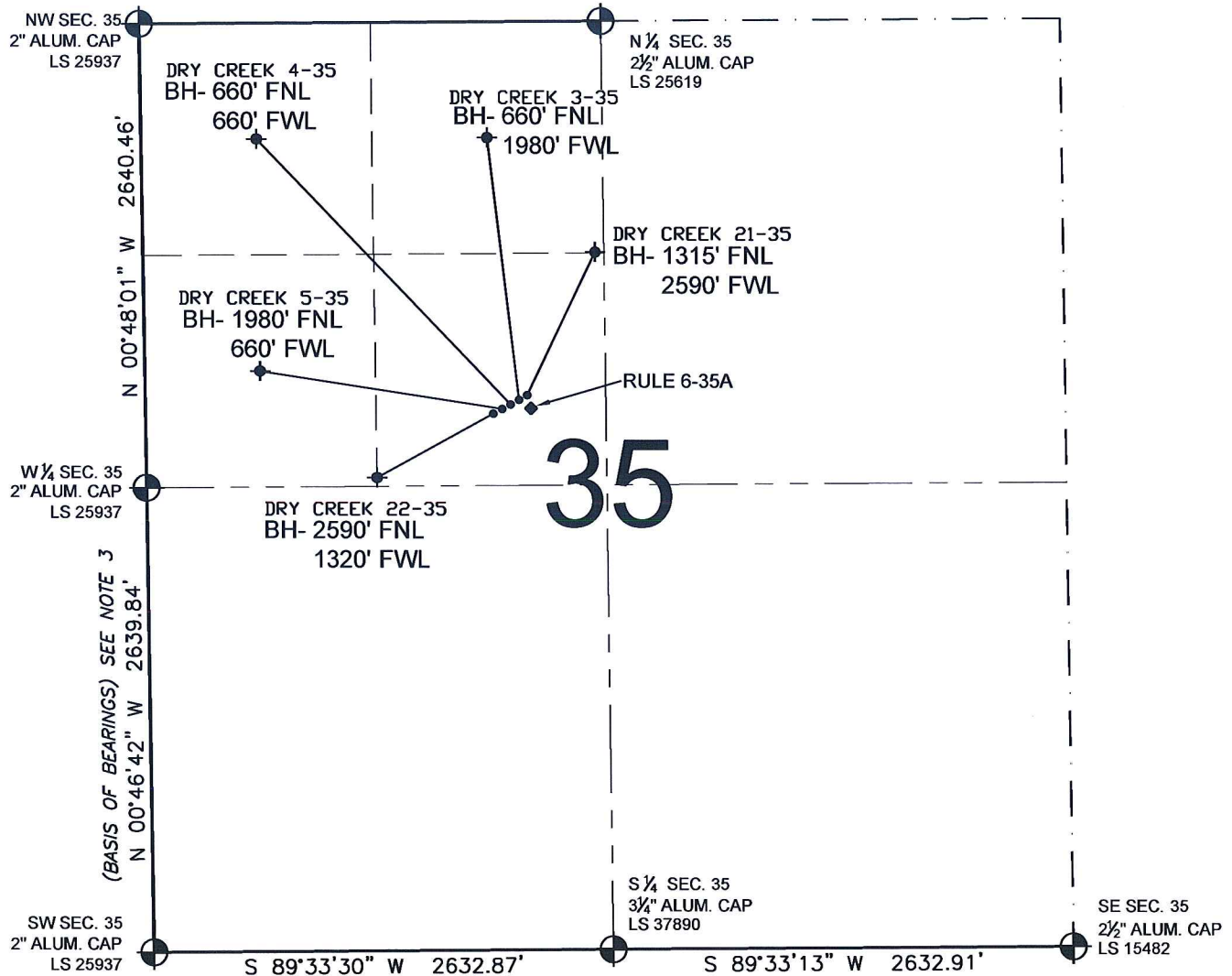


PAD DRAWING: DRY CREEK 5 PAD

SECTION 35, TOWNSHIP 1 NORTH, RANGE 67 WEST, 6TH P.M.



LEGEND

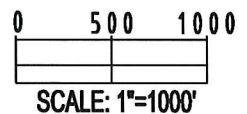
- ⊕ = EXISTING MONUMENT
- ⊕ = BOTTOM HOLE
- BH= BOTTOM HOLE
- = PROPOSED WELL
- ◆ = EXISTING WELL


NOTES:

- THIS SURVEY WAS DONE BY GPS METHODS AND CONFORMS TO THE MINIMUM STANDARDS SET BY THE C.O.G.C.C., RULE NO. 215
- ELEVATIONS SHOWN AT THE WELL HEAD, AS WELL AS HORIZONTAL CONTROL, ARE BASED ON GPS-RTK VALUES DERIVED FROM DOING 2-HOUR STATIC GPS SESSIONS AND REDUCTIONS USING O.P.U.S. SOLUTIONS.
VERTICAL = NAVD88; HORIZONTAL = NAD83/92
- THE BEARINGS SHOWN HEREON ARE BASED ON GPS OBSERVATIONS BETWEEN THE MONUMENTS SHOWN HEREON AS FOUND ON THE FIELD DATE BELOW.
- DISTANCES SHOWN ARE AT GROUND LEVEL, AS MEASURED IN THE FIELD, WITH TIES TO WELLS MEASURED AT A PERPENDICULAR TO SECTION LINES.

NOTES:

DRY CREEK 21-35 TO BE AT 2135' FNL, 2154' FWL.
 BOTTOM HOLE AT 1315' FNL & 2590' FWL.
 DRY CREEK 3-35 TO BE AT 2141' FNL, 2139' FWL.
 BOTTOM HOLE AT 660' FNL & 1980' FWL.
 DRY CREEK 22-35 TO BE AT 2159' FNL, 2095' FWL.
 BOTTOM HOLE AT 2590' FNL & 1320' FWL.
 DRY CREEK 4-35 TO BE AT 2147' FNL, 2125' FWL.
 BOTTOM HOLE AT 660' FNL & 660' FWL.
 DRY CREEK 5-35 TO BE AT 2153' FNL, 2110' FWL.
 BOTTOM HOLE AT 1980' FNL & 660' FWL.
 RULE 6-35A IS AT 2181' FNL & 2174' FWL.



REVISIONS		PREPARED BY:	 Petroleum Field Services, LLC 1801 W. 13th Ave. Denver, CO 80204
INITIAL	DATE		
SMF	09-23-09	KERR-MCGEE OIL & GAS ONSHORE LP	FIELD DATE: 09-09-09 PAD NAME: DRY CREEK 5 PAD DRAWING DATE: 09-12-09 SURFACE LOCATION: WELD COUNTY, COLORADO SE 1/4 NW 1/4, SEC. 35, T1N, R67W
SMF	11-16-09		

KERR-MCGEE OIL & GAS ONSHORE LP

FIELD DATE:
09-09-09

PAD NAME:
DRY CREEK 5 PAD

DRAWING DATE:
09-12-09

SURFACE LOCATION:

BY:
CP

WELD COUNTY, COLORADO
SE 1/4 NW 1/4, SEC. 35, T1N, R67W