



# **US ROCKIES REGION PLANNING**

**COLORADO NORTHERN ZONE - 83**

**WELD\_DRY CREEK 6-35 PAD**

**P\_DRY CREEK 21-35**

**P\_DRY CREEK 21-35**

**Plan: PLAN #1 10-28-09 RHS**

## **Standard Planning Report**

**28 October, 2009**





Azimuths to True North  
Magnetic North: 9.06°  
  
Magnetic Field  
Strength: 53104.4nT  
Dip Angle: 66.78°  
Date: 10/28/2009  
Model: IGRF200510

#### WELL DETAILS: P\_DRY CREEK 21-35

+N/-S	+E/-W	Northing	Ground Level: Easting	5006.00 Latitude	Longitude	Slot
0.00	0.00	1246776.93	3179418.71	40° 0' 32.436 N	104° 51' 34.128 W	

#### FORMATION TOP DETAILS

TVDPath	MDPath	Formation
3119.00	3150.39	PARKMAN TOP
4721.00	4786.39	SUSSEX TOP
7303.00	7393.69	NIO A TOP
7703.00	7793.69	CODELL TOP
8140.00	8230.69	JSAND TOP

#### SECTION DETAILS

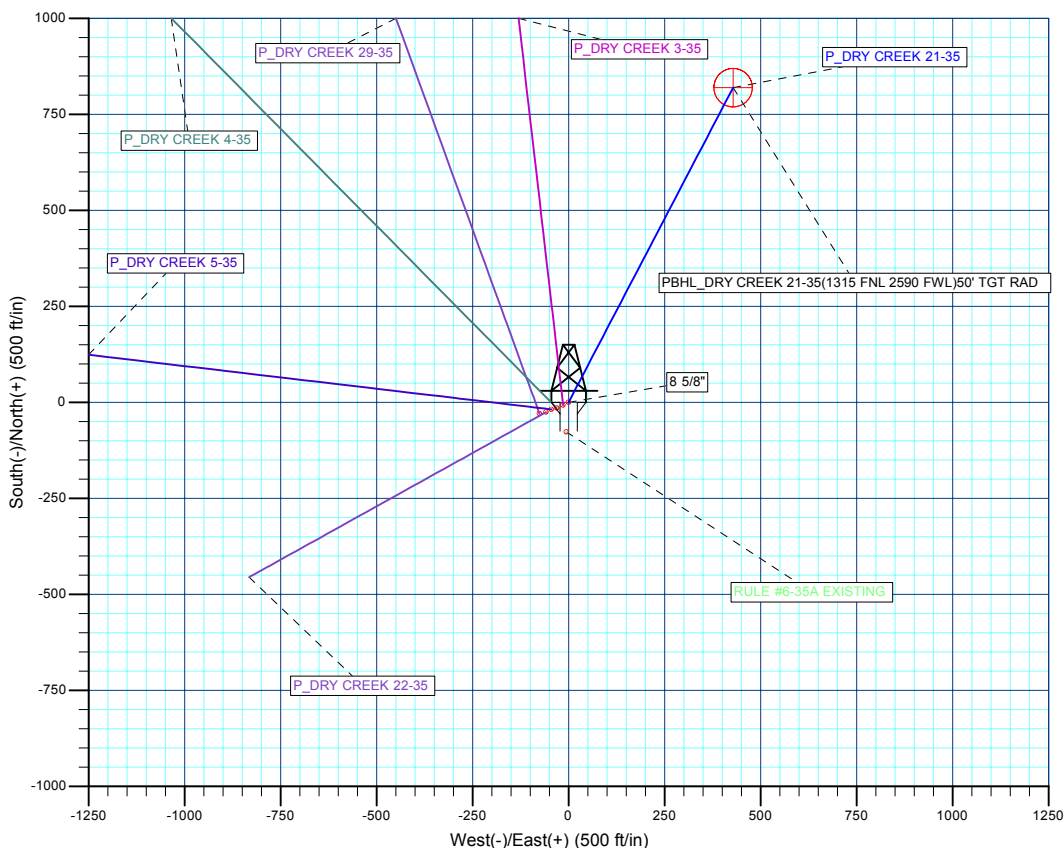
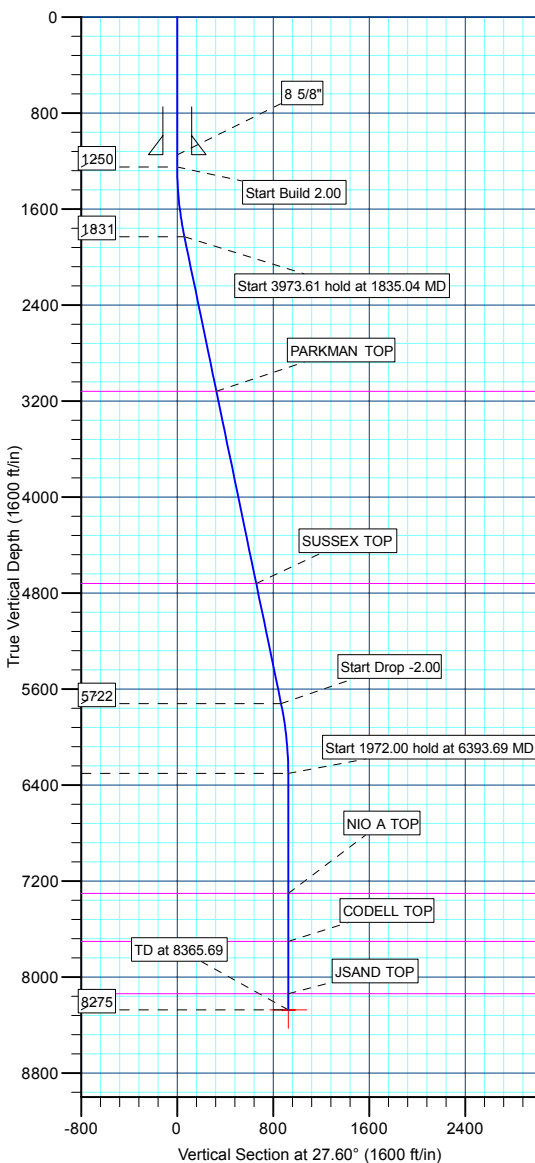
MD	Inc	Azi	TVD	+N/-S	+E/-W	DLeg	TFace	VSec	Target
0.00	0.00	0.00	0.00	0.00	0.00	0.00	0.00	0.00	
1250.00	0.00	0.00	1250.00	0.00	0.00	0.00	0.00	0.00	
1835.04	11.70	27.60	1830.98	52.75	27.58	2.00	27.60	59.53	
5808.65	11.70	27.60	5722.02	766.88	400.98	0.00	0.00	865.38	
6393.69	0.00	0.00	6303.00	819.63	428.57	2.00	180.00	924.91	
8365.69	0.00	0.00	8275.00	819.63	428.57	0.00	0.00	924.91	PBHL_DRY CREEK 21-35(1315 FNL 2590 FWL)50' TGT RAD

#### CASING DETAILS

TVD	MD	Name	Size
1150.00	1150.00	8 5/8"	8.62



KB ELEV: WELL @ 5021.00ft (Original Well Elev)  
GRD ELEV: 5006.00



#### WELLBORE TARGET DETAILS (MAP CO-ORDINATES AND LAT/LONG)

Name	TVD	+N/-S	+E/-W	Northing	Easting	Latitude	Longitude	Shape
PBHL	8275.00	819.63	428.57	1247599.63	3179841.34	40° 0' 40.536 N	104° 51' 28.620 W	Circle (Radius: 50.00)

Plan: PLAN #1 10-28-09 RHS (P\_DRY CREEK 21-35/P\_DRY CREEK 21-35)

Created By: Robert H. Scott

<b>Database:</b>	EDM 2003.21 Single User Db	<b>Local Co-ordinate Reference:</b>	Well P_DRY CREEK 21-35
<b>Company:</b>	US ROCKIES REGION PLANNING	<b>TVD Reference:</b>	WELL @ 5021.00ft (Original Well Elev)
<b>Project:</b>	COLORADO NOTHERN ZONE - 83	<b>MD Reference:</b>	WELL @ 5021.00ft (Original Well Elev)
<b>Site:</b>	WELD_DRY CREEK 6-35 PAD	<b>North Reference:</b>	True
<b>Well:</b>	P_DRY CREEK 21-35	<b>Survey Calculation Method:</b>	Minimum Curvature
<b>Wellbore:</b>	P_DRY CREEK 21-35		
<b>Design:</b>	PLAN #1 10-28-09 RHS		

<b>Project</b>	COLORADO NOTHERN ZONE - 83, KERR MCGEE OIL & GAS ONSHORE LP		
<b>Map System:</b>	US State Plane 1983	<b>System Datum:</b>	Mean Sea Level
<b>Geo Datum:</b>	North American Datum 1983		
<b>Map Zone:</b>	Colorado Northern Zone		

<b>Site</b>	WELD_DRY CREEK 6-35 PAD, SECTION 35 T1N R67W			
<b>Site Position:</b>		<b>Northing:</b>	1,246,769.55 ft	<b>Latitude:</b> 40° 0' 32.364 N
<b>From:</b>	Lat/Long	<b>Easting:</b>	3,179,404.76 ft	<b>Longitude:</b> 104° 51' 34.308 W
<b>Position Uncertainty:</b>	0.00 ft	<b>Slot Radius:</b>	in	<b>Grid Convergence:</b> 0.41 °

<b>Well</b>	P_DRY CREEK 21-35			
<b>Well Position</b>	<b>+N/-S</b>	7.28 ft	<b>Northing:</b>	1,246,776.93 ft
	<b>+E/-W</b>	14.01 ft	<b>Easting:</b>	3,179,418.71 ft
<b>Position Uncertainty</b>		0.00 ft	<b>Wellhead Elevation:</b>	ft
			<b>Ground Level:</b>	5,006.00 ft

<b>Wellbore</b>	P_DRY CREEK 21-35				
<b>Magnetics</b>	<b>Model Name</b>	<b>Sample Date</b>	<b>Declination (°)</b>	<b>Dip Angle (°)</b>	<b>Field Strength (nT)</b>
	IGRF200510	10/28/2009	9.06	66.78	53,104

<b>Design</b>	PLAN #1 10-28-09 RHS			
<b>Audit Notes:</b>				
<b>Version:</b>	<b>Phase:</b>	PLAN	<b>Tie On Depth:</b>	0.00
<b>Vertical Section:</b>	<b>Depth From (TVD) (ft)</b>	<b>+N/-S (ft)</b>	<b>+E/-W (ft)</b>	<b>Direction (°)</b>
	0.00	0.00	0.00	27.60

<b>Plan Sections</b>										
Measured Depth (ft)	Inclination (°)	Azimuth (°)	Vertical Depth (ft)	+N/-S (ft)	+E/-W (ft)	Dogleg Rate (°/100ft)	Build Rate (°/100ft)	Turn Rate (°/100ft)	TFO (°)	Target
0.00	0.00	0.00	0.00	0.00	0.00	0.00	0.00	0.00	0.00	
1,250.00	0.00	0.00	1,250.00	0.00	0.00	0.00	0.00	0.00	0.00	
1,835.04	11.70	27.60	1,830.98	52.75	27.58	2.00	2.00	0.00	27.60	
5,808.65	11.70	27.60	5,722.02	766.88	400.98	0.00	0.00	0.00	0.00	
6,393.69	0.00	0.00	6,303.00	819.63	428.57	2.00	-2.00	0.00	180.00	
8,365.69	0.00	0.00	8,275.00	819.63	428.57	0.00	0.00	0.00	0.00	PBHL_DRY CREEK

<b>Database:</b>	EDM 2003.21 Single User Db	<b>Local Co-ordinate Reference:</b>	Well P_DRY CREEK 21-35
<b>Company:</b>	US ROCKIES REGION PLANNING	<b>TVD Reference:</b>	WELL @ 5021.00ft (Original Well Elev)
<b>Project:</b>	COLORADO NOTHERN ZONE - 83	<b>MD Reference:</b>	WELL @ 5021.00ft (Original Well Elev)
<b>Site:</b>	WELD_DRY CREEK 6-35 PAD	<b>North Reference:</b>	True
<b>Well:</b>	P_DRY CREEK 21-35	<b>Survey Calculation Method:</b>	Minimum Curvature
<b>Wellbore:</b>	P_DRY CREEK 21-35		
<b>Design:</b>	PLAN #1 10-28-09 RHS		

Planned Survey									
Measured Depth (ft)	Inclination (°)	Azimuth (°)	Vertical Depth (ft)	+N/-S (ft)	+E/-W (ft)	Vertical Section (ft)	Dogleg Rate (°/100ft)	Build Rate (°/100ft)	Turn Rate (°/100ft)
<b>Start Build 2.00</b>									
1,250.00	0.00	0.00	1,250.00	0.00	0.00	0.00	0.00	0.00	0.00
1,300.00	1.00	27.60	1,300.00	0.39	0.20	0.44	2.00	2.00	0.00
1,400.00	3.00	27.60	1,399.93	3.48	1.82	3.93	2.00	2.00	0.00
1,500.00	5.00	27.60	1,499.68	9.66	5.05	10.90	2.00	2.00	0.00
1,600.00	7.00	27.60	1,599.13	18.92	9.89	21.35	2.00	2.00	0.00
1,700.00	9.00	27.60	1,698.15	31.26	16.34	35.27	2.00	2.00	0.00
1,800.00	11.00	27.60	1,796.63	46.64	24.39	52.63	2.00	2.00	0.00
<b>Start 3973.61 hold at 1835.04 MD</b>									
1,835.04	11.70	27.60	1,830.98	52.75	27.58	59.53	2.00	2.00	0.00
1,900.00	11.70	27.60	1,894.59	64.43	33.69	72.70	0.00	0.00	0.00
2,000.00	11.70	27.60	1,992.51	82.40	43.09	92.98	0.00	0.00	0.00
2,100.00	11.70	27.60	2,090.44	100.37	52.48	113.26	0.00	0.00	0.00
2,200.00	11.70	27.60	2,188.36	118.34	61.88	133.54	0.00	0.00	0.00
2,300.00	11.70	27.60	2,286.28	136.32	71.28	153.82	0.00	0.00	0.00
2,400.00	11.70	27.60	2,384.20	154.29	80.67	174.10	0.00	0.00	0.00
2,500.00	11.70	27.60	2,482.12	172.26	90.07	194.38	0.00	0.00	0.00
2,600.00	11.70	27.60	2,580.05	190.23	99.47	214.67	0.00	0.00	0.00
2,700.00	11.70	27.60	2,677.97	208.20	108.86	234.95	0.00	0.00	0.00
2,800.00	11.70	27.60	2,775.89	226.17	118.26	255.23	0.00	0.00	0.00
2,900.00	11.70	27.60	2,873.81	244.14	127.66	275.51	0.00	0.00	0.00
3,000.00	11.70	27.60	2,971.73	262.12	137.05	295.79	0.00	0.00	0.00
3,100.00	11.70	27.60	3,069.66	280.09	146.45	316.07	0.00	0.00	0.00
<b>PARKMAN TOP</b>									
3,150.39	11.70	27.60	3,119.00	289.14	151.19	326.28	0.00	0.00	0.00
3,200.00	11.70	27.60	3,167.58	298.06	155.85	336.35	0.00	0.00	0.00
3,300.00	11.70	27.60	3,265.50	316.03	165.25	356.63	0.00	0.00	0.00
3,400.00	11.70	27.60	3,363.42	334.00	174.64	376.91	0.00	0.00	0.00
3,500.00	11.70	27.60	3,461.34	351.97	184.04	397.19	0.00	0.00	0.00
3,600.00	11.70	27.60	3,559.27	369.95	193.44	417.47	0.00	0.00	0.00
3,700.00	11.70	27.60	3,657.19	387.92	202.83	437.75	0.00	0.00	0.00
3,800.00	11.70	27.60	3,755.11	405.89	212.23	458.03	0.00	0.00	0.00
3,900.00	11.70	27.60	3,853.03	423.86	221.63	478.31	0.00	0.00	0.00
4,000.00	11.70	27.60	3,950.95	441.83	231.02	498.59	0.00	0.00	0.00
4,100.00	11.70	27.60	4,048.88	459.80	240.42	518.87	0.00	0.00	0.00
4,200.00	11.70	27.60	4,146.80	477.78	249.82	539.15	0.00	0.00	0.00
4,300.00	11.70	27.60	4,244.72	495.75	259.21	559.43	0.00	0.00	0.00
4,400.00	11.70	27.60	4,342.64	513.72	268.61	579.71	0.00	0.00	0.00
4,500.00	11.70	27.60	4,440.56	531.69	278.01	599.99	0.00	0.00	0.00
4,600.00	11.70	27.60	4,538.49	549.66	287.41	620.27	0.00	0.00	0.00
4,700.00	11.70	27.60	4,636.41	567.63	296.80	640.55	0.00	0.00	0.00
<b>SUSSEX TOP</b>									
4,786.39	11.70	27.60	4,721.00	583.16	304.92	658.07	0.00	0.00	0.00
4,800.00	11.70	27.60	4,734.33	585.61	306.20	660.83	0.00	0.00	0.00
4,900.00	11.70	27.60	4,832.25	603.58	315.60	681.11	0.00	0.00	0.00
5,000.00	11.70	27.60	4,930.17	621.55	324.99	701.39	0.00	0.00	0.00
5,100.00	11.70	27.60	5,028.10	639.52	334.39	721.67	0.00	0.00	0.00
5,200.00	11.70	27.60	5,126.02	657.49	343.79	741.95	0.00	0.00	0.00
5,300.00	11.70	27.60	5,223.94	675.46	353.18	762.23	0.00	0.00	0.00
5,400.00	11.70	27.60	5,321.86	693.44	362.58	782.51	0.00	0.00	0.00
5,500.00	11.70	27.60	5,419.78	711.41	371.98	802.79	0.00	0.00	0.00
5,600.00	11.70	27.60	5,517.71	729.38	381.37	823.07	0.00	0.00	0.00
5,700.00	11.70	27.60	5,615.63	747.35	390.77	843.35	0.00	0.00	0.00

<b>Database:</b>	EDM 2003.21 Single User Db	<b>Local Co-ordinate Reference:</b>	Well P_DRY CREEK 21-35
<b>Company:</b>	US ROCKIES REGION PLANNING	<b>TVD Reference:</b>	WELL @ 5021.00ft (Original Well Elev)
<b>Project:</b>	COLORADO NOTHERN ZONE - 83	<b>MD Reference:</b>	WELL @ 5021.00ft (Original Well Elev)
<b>Site:</b>	WELD_DRY CREEK 6-35 PAD	<b>North Reference:</b>	True
<b>Well:</b>	P_DRY CREEK 21-35	<b>Survey Calculation Method:</b>	Minimum Curvature
<b>Wellbore:</b>	P_DRY CREEK 21-35		
<b>Design:</b>	PLAN #1 10-28-09 RHS		

Planned Survey									
Measured Depth (ft)	Inclination (°)	Azimuth (°)	Vertical Depth (ft)	+N/-S (ft)	+E/-W (ft)	Vertical Section (ft)	Dogleg Rate (°/100ft)	Build Rate (°/100ft)	Turn Rate (°/100ft)
5,800.00	11.70	27.60	5,713.55	765.32	400.17	863.63	0.00	0.00	0.00
<b>Start Drop -2.00</b>									
5,808.65	11.70	27.60	5,722.02	766.88	400.98	865.38	0.00	0.00	0.00
5,900.00	9.87	27.60	5,811.75	782.03	408.90	882.48	2.00	-2.00	0.00
6,000.00	7.87	27.60	5,910.55	795.70	416.05	897.90	2.00	-2.00	0.00
6,100.00	5.87	27.60	6,009.83	806.30	421.60	909.87	2.00	-2.00	0.00
6,200.00	3.87	27.60	6,109.46	813.83	425.53	918.37	2.00	-2.00	0.00
6,300.00	1.87	27.60	6,209.33	818.27	427.86	923.38	2.00	-2.00	0.00
<b>Start 1972.00 hold at 6393.69 MD</b>									
6,393.69	0.00	0.00	6,303.00	819.63	428.57	924.91	2.00	-2.00	-29.46
6,400.00	0.00	0.00	6,309.31	819.63	428.57	924.91	0.00	0.00	0.00
6,500.00	0.00	0.00	6,409.31	819.63	428.57	924.91	0.00	0.00	0.00
6,600.00	0.00	0.00	6,509.31	819.63	428.57	924.91	0.00	0.00	0.00
6,700.00	0.00	0.00	6,609.31	819.63	428.57	924.91	0.00	0.00	0.00
6,800.00	0.00	0.00	6,709.31	819.63	428.57	924.91	0.00	0.00	0.00
6,900.00	0.00	0.00	6,809.31	819.63	428.57	924.91	0.00	0.00	0.00
7,000.00	0.00	0.00	6,909.31	819.63	428.57	924.91	0.00	0.00	0.00
7,100.00	0.00	0.00	7,009.31	819.63	428.57	924.91	0.00	0.00	0.00
7,200.00	0.00	0.00	7,109.31	819.63	428.57	924.91	0.00	0.00	0.00
7,300.00	0.00	0.00	7,209.31	819.63	428.57	924.91	0.00	0.00	0.00
<b>NIO A TOP</b>									
7,393.69	0.00	0.00	7,303.00	819.63	428.57	924.91	0.00	0.00	0.00
7,400.00	0.00	0.00	7,309.31	819.63	428.57	924.91	0.00	0.00	0.00
7,500.00	0.00	0.00	7,409.31	819.63	428.57	924.91	0.00	0.00	0.00
7,600.00	0.00	0.00	7,509.31	819.63	428.57	924.91	0.00	0.00	0.00
7,700.00	0.00	0.00	7,609.31	819.63	428.57	924.91	0.00	0.00	0.00
<b>CODELL TOP</b>									
7,793.69	0.00	0.00	7,703.00	819.63	428.57	924.91	0.00	0.00	0.00
7,800.00	0.00	0.00	7,709.31	819.63	428.57	924.91	0.00	0.00	0.00
7,900.00	0.00	0.00	7,809.31	819.63	428.57	924.91	0.00	0.00	0.00
8,000.00	0.00	0.00	7,909.31	819.63	428.57	924.91	0.00	0.00	0.00
8,100.00	0.00	0.00	8,009.31	819.63	428.57	924.91	0.00	0.00	0.00
8,200.00	0.00	0.00	8,109.31	819.63	428.57	924.91	0.00	0.00	0.00
<b>JSAND TOP</b>									
8,230.69	0.00	0.00	8,140.00	819.63	428.57	924.91	0.00	0.00	0.00
8,300.00	0.00	0.00	8,209.31	819.63	428.57	924.91	0.00	0.00	0.00
<b>PBHL_DRY CREEK 21-35(1315 FNL 2590 FWL)50' TGT RAD</b>									
8,365.69	0.00	0.00	8,275.00	819.63	428.57	924.91	0.00	0.00	0.00

Design Targets									
Target Name	Dip Angle (°)	Dip Dir. (°)	TVD (ft)	+N/-S (ft)	+E/-W (ft)	Northing (ft)	Easting (ft)	Latitude	Longitude
- hit/miss target									
- Shape									
PBHL_DRY CREEK 2	0.00	0.00	8,275.00	819.63	428.57	1,247,599.63	3,179,841.34	40° 0' 40.536 N	104° 51' 28.620 W
- plan hits target center									
- Circle (radius 50.00)									

<b>Database:</b>	EDM 2003.21 Single User Db	<b>Local Co-ordinate Reference:</b>	Well P_DRY CREEK 21-35
<b>Company:</b>	US ROCKIES REGION PLANNING	<b>TVD Reference:</b>	WELL @ 5021.00ft (Original Well Elev)
<b>Project:</b>	COLORADO NOTHERN ZONE - 83	<b>MD Reference:</b>	WELL @ 5021.00ft (Original Well Elev)
<b>Site:</b>	WELD_DRY CREEK 6-35 PAD	<b>North Reference:</b>	True
<b>Well:</b>	P_DRY CREEK 21-35	<b>Survey Calculation Method:</b>	Minimum Curvature
<b>Wellbore:</b>	P_DRY CREEK 21-35		
<b>Design:</b>	PLAN #1 10-28-09 RHS		

Casing Points					
Measured Depth (ft)	Vertical Depth (ft)	Name	Casing Diameter (in)	Hole Diameter (in)	
1,150.00	1,150.00	8 5/8"	8.62	11.00	

Formations						
Measured Depth (ft)	Vertical Depth (ft)	Name	Lithology	Dip (°)	Dip Direction (°)	
3,150.39	3,119.00	PARKMAN TOP				
4,786.39	4,721.00	SUSSEX TOP				
7,393.69	7,303.00	NIO A TOP				
7,793.69	7,703.00	CODELL TOP				
8,230.69	8,140.00	JSAND TOP				

Plan Annotations					
Measured Depth (ft)	Vertical Depth (ft)	Local Coordinates			
		+N/-S (ft)	+E/-W (ft)	Comment	
1,250.00	1,250.00	0.00	0.00	Start Build 2.00	
1,835.04	1,830.98	52.75	27.58	Start 3973.61 hold at 1835.04 MD	
5,808.65	5,722.02	766.88	400.98	Start Drop -2.00	
6,393.69	6,303.00	819.63	428.57	Start 1972.00 hold at 6393.69 MD	
8,365.69	8,275.00	819.63	428.57	TD at 8365.69	



# **US ROCKIES REGION PLANNING**

**COLORADO NOTHERN ZONE - 83  
WELD\_DRY CREEK 6-35 PAD  
P\_DRY CREEK 21-35**

**P\_DRY CREEK 21-35  
PLAN #1 10-28-09 RHS**

## **Anticollision Report**

**28 October, 2009**



<b>Company:</b>	US ROCKIES REGION PLANNING	<b>Local Co-ordinate Reference:</b>	Well P_DRY CREEK 21-35
<b>Project:</b>	COLORADO NOTHERN ZONE - 83	<b>TVD Reference:</b>	WELL @ 5021.00ft (Original Well Elev)
<b>Reference Site:</b>	WELD_DRY CREEK 6-35 PAD	<b>MD Reference:</b>	WELL @ 5021.00ft (Original Well Elev)
<b>Site Error:</b>	0.00ft	<b>North Reference:</b>	True
<b>Reference Well:</b>	P_DRY CREEK 21-35	<b>Survey Calculation Method:</b>	Minimum Curvature
<b>Well Error:</b>	0.00ft	<b>Output errors are at</b>	2.00 sigma
<b>Reference Wellbore</b>	P_DRY CREEK 21-35	<b>Database:</b>	EDM 2003.21 Single User Db
<b>Reference Design:</b>	PLAN #1 10-28-09 RHS	<b>Offset TVD Reference:</b>	Offset Datum

<b>Reference</b>	PLAN #1 10-28-09 RHS		
<b>Filter type:</b>	NO GLOBAL FILTER: Using user defined selection & filtering criteria		
<b>Interpolation Method:</b>	Stations	<b>Error Model:</b>	ISCWSA
<b>Depth Range:</b>	0.00 to 20,000.00ft	<b>Scan Method:</b>	Closest Approach 3D
<b>Results Limited by:</b>	Maximum center-center distance of 10,000.00ft	<b>Error Surface:</b>	Elliptical Conic
<b>Warning Levels Evaluated at:</b>	2.00 Sigma		

Survey Tool Program		Date	10/28/2009			
From (ft)	To (ft)	Survey (Wellbore)	Tool Name	Description		
0.00	8,365.69	PLAN #1 10-28-09 RHS (P_DRY CREEK	MWD	MWD - Standard		

Summary							
Site Name	Reference Measured Depth (ft)	Offset Measured Depth (ft)	Distance Between Centres (ft)	Distance Between Ellipses (ft)	Separation Factor	Warning	
Offset Well - Wellbore - Design							
WELD_DRY CREEK 6-35 PAD							
P_DRY CREEK 22-35 - P_DRY CREEK 22-35 - PLAN #	1,250.00	1,250.00	64.11	58.75	11.960	CC, ES	
P_DRY CREEK 22-35 - P_DRY CREEK 22-35 - PLAN #	1,300.00	1,298.90	64.88	59.31	11.646	SF	
P_DRY CREEK 29-35 - P_DRY CREEK 29-35 - PLAN #	294.93	294.95	81.04	79.97	75.943	CC	
P_DRY CREEK 29-35 - P_DRY CREEK 29-35 - PLAN #	400.00	399.79	81.22	79.67	52.566	ES	
P_DRY CREEK 29-35 - P_DRY CREEK 29-35 - PLAN #	900.00	886.91	115.82	111.59	27.360	SF	
P_DRY CREEK 3-35 - P_DRY CREEK 3-35 - PLAN #1 1	379.45	379.57	14.75	1.15	1.085	Level 2, CC	
P_DRY CREEK 3-35 - P_DRY CREEK 3-35 - PLAN #1 1	500.00	499.49	17.86	-0.86	0.954	Level 1, ES, SF	
P_DRY CREEK 4-35 - P_DRY CREEK 4-35 - PLAN #1 1	200.00	200.00	34.08	33.44	53.208	CC, ES	
P_DRY CREEK 4-35 - P_DRY CREEK 4-35 - PLAN #1 1	600.00	595.89	50.54	48.04	20.210	SF	
P_DRY CREEK 5-35 - P_DRY CREEK 5-35 - PLAN #1 1	200.00	200.00	48.38	47.74	75.522	CC, ES	
P_DRY CREEK 5-35 - P_DRY CREEK 5-35 - PLAN #1 1	600.00	591.71	73.57	71.12	30.077	SF	
RULE #6-35A EXISTING - RULE #6-35A EXISTING - RL	1,250.00	1,239.00	77.10	26.85	1.535	CC	
RULE #6-35A EXISTING - RULE #6-35A EXISTING - RL	1,400.00	1,388.93	80.72	24.20	1.428	Level 3, ES, SF	

WELD_DRY CREEK 6-35 PAD - P_DRY CREEK 22-35 - P_DRY CREEK 22-35 - PLAN #1 10-28-09 R1										Offset Site Error:		0.00 ft	
Survey Program: 0-MWD										Offset Well Error:		0.00 ft	
Reference		Offset		Semi Major Axis			Distance				Warning		
Measured Depth (ft)	Vertical Depth (ft)	Measured Depth (ft)	Vertical Depth (ft)	Reference (ft)	Offset (ft)	Highside Toolface (°)	Offset Wellbore Centre +N/-S (ft)	+E/-W (ft)	Between Centres (ft)	Between Ellipses (ft)		Minimum Separation (ft)	Separation Factor
0.00	0.00	0.00	0.00	0.00	0.00	-113.44	-25.50	-58.82	64.11				
100.00	100.00	100.00	100.00	0.10	0.10	-113.44	-25.50	-58.82	64.11	63.92	0.19	335.583	
200.00	200.00	200.00	200.00	0.32	0.32	-113.44	-25.50	-58.82	64.11	63.47	0.64	100.086	
300.00	300.00	300.00	300.00	0.55	0.55	-113.44	-25.50	-58.82	64.11	63.02	1.09	58.814	
400.00	400.00	400.00	400.00	0.77	0.77	-113.44	-25.50	-58.82	64.11	62.57	1.54	41.642	
500.00	500.00	500.00	500.00	0.99	0.99	-113.44	-25.50	-58.82	64.11	62.12	1.99	32.231	
600.00	600.00	600.00	600.00	1.22	1.22	-113.44	-25.50	-58.82	64.11	61.67	2.44	26.290	
700.00	700.00	700.00	700.00	1.44	1.44	-113.44	-25.50	-58.82	64.11	61.23	2.89	22.198	
800.00	800.00	800.00	800.00	1.67	1.67	-113.44	-25.50	-58.82	64.11	60.78	3.34	19.208	
900.00	900.00	900.00	900.00	1.89	1.89	-113.44	-25.50	-58.82	64.11	60.33	3.79	16.929	
1,000.00	1,000.00	1,000.00	1,000.00	2.12	2.12	-113.44	-25.50	-58.82	64.11	59.88	4.24	15.132	
1,100.00	1,100.00	1,100.00	1,100.00	2.34	2.34	-113.44	-25.50	-58.82	64.11	59.43	4.69	13.681	
1,200.00	1,200.00	1,200.00	1,200.00	2.57	2.57	-113.44	-25.50	-58.82	64.11	58.98	5.14	12.483	
1,250.00	1,250.00	1,250.00	1,250.00	2.68	2.68	-113.44	-25.50	-58.82	64.11	58.75	5.36	11.960 CC, ES	
1,300.00	1,300.00	1,298.90	1,298.89	2.79	2.78	-141.30	-25.70	-59.19	64.88	59.31	5.57	11.646 SF	

CC - Min centre to center distance or convergent point. SF - min separation factor. ES - min ellipse separation



<b>Company:</b>	US ROCKIES REGION PLANNING	<b>Local Co-ordinate Reference:</b>	Well P_DRY CREEK 21-35
<b>Project:</b>	COLORADO NOTHERN ZONE - 83	<b>TVD Reference:</b>	WELL @ 5021.00ft (Original Well Elev)
<b>Reference Site:</b>	WELD_DRY CREEK 6-35 PAD	<b>MD Reference:</b>	WELL @ 5021.00ft (Original Well Elev)
<b>Site Error:</b>	0.00ft	<b>North Reference:</b>	True
<b>Reference Well:</b>	P_DRY CREEK 21-35	<b>Survey Calculation Method:</b>	Minimum Curvature
<b>Well Error:</b>	0.00ft	<b>Output errors are at</b>	2.00 sigma
<b>Reference Wellbore</b>	P_DRY CREEK 21-35	<b>Database:</b>	EDM 2003.21 Single User Db
<b>Reference Design:</b>	PLAN #1 10-28-09 RHS	<b>Offset TVD Reference:</b>	Offset Datum

Offset Design WELD_DRY CREEK 6-35 PAD - P_DRY CREEK 22-35 - P_DRY CREEK 22-35 - PLAN #1 10-28-09 R												Offset Site Error:	0.00 ft
Survey Program: 0-MWMD												Offset Well Error:	0.00 ft
Measured Depth (ft)	Vertical Depth (ft)	Measured Depth (ft)	Vertical Depth (ft)	Reference (ft)	Offset (ft)	Highside Toolface (°)	Offset Wellbore Centre +N/-S (ft)	+E/-W (ft)	Between Centres (ft)	Between Ellipses (ft)	Minimum Separation (ft)	Separation Factor	Warning
1,400.00	1,399.93	1,396.37	1,396.31	3.01	2.96	-143.20	-27.32	-62.09	71.04	65.07	5.97	11.904	
1,500.00	1,499.68	1,492.90	1,492.61	3.24	3.15	-146.13	-30.50	-67.82	83.50	77.14	6.36	13.127	
1,600.00	1,599.13	1,587.88	1,587.10	3.47	3.36	-149.13	-35.17	-76.22	102.40	95.65	6.75	15.169	
1,700.00	1,698.15	1,680.74	1,679.12	3.72	3.58	-151.68	-41.20	-87.07	127.70	120.57	7.14	17.896	
1,800.00	1,796.63	1,770.99	1,768.12	4.00	3.82	-153.67	-48.45	-100.12	159.24	151.72	7.52	21.189	
1,835.04	1,830.98	1,804.66	1,801.20	4.10	3.91	-154.30	-51.51	-105.61	171.75	164.10	7.65	22.449	
1,900.00	1,894.59	1,862.04	1,857.51	4.30	4.08	-155.37	-56.87	-115.26	195.64	187.71	7.93	24.683	
2,000.00	1,992.51	1,954.87	1,948.61	4.63	4.38	-156.66	-65.55	-130.87	232.55	224.18	8.37	27.799	
2,100.00	2,090.44	2,047.71	2,039.71	4.98	4.69	-157.60	-74.23	-146.48	269.53	260.71	8.81	30.579	
2,200.00	2,188.36	2,140.54	2,130.80	5.34	5.02	-158.31	-82.91	-162.09	306.56	297.29	9.27	33.064	
2,300.00	2,286.28	2,233.37	2,221.90	5.70	5.36	-158.87	-91.59	-177.70	343.62	333.88	9.74	35.295	
2,400.00	2,384.20	2,326.20	2,313.00	6.08	5.70	-159.32	-100.27	-193.31	380.70	370.50	10.21	37.302	
2,500.00	2,482.12	2,419.03	2,404.10	6.47	6.06	-159.69	-108.95	-208.92	417.81	407.12	10.68	39.115	
2,600.00	2,580.05	2,511.87	2,495.19	6.86	6.42	-160.00	-117.63	-224.54	454.92	443.76	11.16	40.759	
2,700.00	2,677.97	2,604.70	2,586.29	7.26	6.78	-160.26	-126.30	-240.15	492.04	480.40	11.65	42.253	
2,800.00	2,775.89	2,697.53	2,677.39	7.66	7.15	-160.49	-134.98	-255.76	529.17	517.04	12.13	43.615	
2,900.00	2,873.81	2,790.36	2,768.49	8.06	7.52	-160.69	-143.66	-271.37	566.31	553.69	12.62	44.862	
3,000.00	2,971.73	2,883.19	2,859.58	8.47	7.90	-160.86	-152.34	-286.98	603.45	590.34	13.12	46.006	
3,100.00	3,069.66	2,976.03	2,950.68	8.88	8.28	-161.01	-161.02	-302.59	640.60	626.99	13.61	47.059	
3,200.00	3,167.58	3,068.86	3,041.78	9.29	8.66	-161.15	-169.70	-318.20	677.75	663.64	14.11	48.031	
3,300.00	3,265.50	3,161.69	3,132.88	9.71	9.04	-161.27	-178.38	-333.81	714.90	700.29	14.61	48.931	
3,400.00	3,363.42	3,254.52	3,223.97	10.13	9.43	-161.38	-187.06	-349.42	752.06	736.95	15.11	49.766	
3,500.00	3,461.34	3,347.35	3,315.07	10.54	9.81	-161.48	-195.74	-365.03	789.22	773.60	15.62	50.541	
3,600.00	3,559.27	3,440.19	3,406.17	10.96	10.20	-161.57	-204.41	-380.65	826.38	810.26	16.12	51.264	
3,700.00	3,657.19	3,533.02	3,497.27	11.38	10.59	-161.65	-213.09	-396.26	863.54	846.91	16.63	51.940	
3,800.00	3,755.11	3,625.85	3,586.36	11.81	10.98	-161.72	-221.77	-411.87	900.70	883.57	17.13	52.571	
3,900.00	3,853.03	3,718.68	3,679.46	12.23	11.37	-161.79	-230.45	-427.48	937.86	920.22	17.64	53.164	
4,000.00	3,950.95	3,811.51	3,770.56	12.65	11.77	-161.86	-239.13	-443.09	975.03	956.88	18.15	53.720	
4,100.00	4,048.88	3,904.35	3,861.66	13.08	12.16	-161.92	-247.81	-458.70	1,012.20	993.54	18.66	54.243	
4,200.00	4,146.80	3,997.18	3,952.75	13.50	12.55	-161.97	-256.49	-474.31	1,049.36	1,030.19	19.17	54.736	
4,300.00	4,244.72	4,090.01	4,043.85	13.93	12.95	-162.02	-265.17	-489.92	1,086.53	1,066.85	19.68	55.201	
4,400.00	4,342.64	4,182.84	4,134.95	14.36	13.35	-162.07	-273.85	-505.53	1,123.70	1,103.50	20.20	55.640	
4,500.00	4,440.56	4,275.67	4,226.04	14.78	13.74	-162.12	-282.53	-521.15	1,160.87	1,140.16	20.71	56.056	
4,600.00	4,538.49	4,368.51	4,317.14	15.21	14.14	-162.16	-291.20	-536.76	1,198.04	1,176.81	21.22	56.451	
4,700.00	4,636.41	4,461.34	4,408.24	15.64	14.54	-162.20	-299.88	-552.37	1,235.21	1,213.47	21.74	56.825	
4,800.00	4,734.33	4,554.17	4,499.34	16.07	14.93	-162.24	-308.56	-567.98	1,272.38	1,250.13	22.25	57.180	
4,900.00	4,832.25	4,647.00	4,590.43	16.50	15.33	-162.27	-317.24	-583.59	1,309.55	1,286.78	22.77	57.519	
5,000.00	4,930.17	4,739.83	4,681.53	16.93	15.73	-162.31	-325.92	-599.20	1,346.72	1,323.44	23.28	57.841	
5,100.00	5,028.10	4,832.67	4,772.63	17.36	16.13	-162.34	-334.60	-614.81	1,383.89	1,360.09	23.80	58.148	
5,200.00	5,126.02	4,925.50	4,863.73	17.79	16.53	-162.37	-343.28	-630.42	1,421.06	1,396.75	24.32	58.441	
5,300.00	5,223.94	5,018.33	4,954.82	18.22	16.93	-162.40	-351.96	-646.03	1,458.24	1,433.40	24.83	58.721	
5,400.00	5,321.86	5,111.16	5,045.92	18.65	17.33	-162.42	-360.64	-661.64	1,495.41	1,470.06	25.35	58.989	
5,500.00	5,419.78	5,203.99	5,137.02	19.08	17.73	-162.45	-369.31	-677.26	1,532.58	1,506.71	25.87	59.245	
5,600.00	5,517.71	5,296.82	5,228.12	19.51	18.13	-162.47	-377.99	-692.87	1,569.75	1,543.37	26.39	59.491	
5,700.00	5,615.63	5,389.66	5,319.21	19.94	18.53	-162.50	-386.67	-708.48	1,606.93	1,580.02	26.90	59.726	
5,808.65	5,722.02	5,490.52	5,418.19	20.41	18.96	-162.52	-396.10	-725.44	1,647.32	1,619.85	27.47	59.971	
5,900.00	5,811.75	5,575.83	5,501.90	20.75	19.33	-162.73	-404.08	-739.78	1,679.98	1,651.93	28.05	59.886	
6,000.00	5,910.55	5,670.30	5,594.61	21.03	19.74	-162.91	-412.91	-755.67	1,712.74	1,684.10	28.64	59.810	
6,100.00	6,009.83	5,765.79	5,688.32	21.28	20.15	-163.02	-421.84	-771.73	1,742.33	1,713.15	29.18	59.701	
6,200.00	6,109.46	5,866.09	5,806.42	21.50	20.64	-163.06	-432.95	-791.72	1,768.61	1,738.86	29.75	59.449	
6,300.00	6,209.33	6,129.30	6,047.29	21.67	21.27	-162.97	-449.09	-820.76	1,786.48	1,756.00	30.48	58.616	
6,393.69	6,303.00	6,362.85	6,280.43	21.79	21.67	-135.33	-455.20	-831.75	1,792.79	1,761.72	31.07	57.704	

CC - Min centre to center distance or convergent point, SF - min separation factor, ES - min ellipse separation

<b>Company:</b>	US ROCKIES REGION PLANNING	<b>Local Co-ordinate Reference:</b>	Well P_DRY CREEK 21-35
<b>Project:</b>	COLORADO NOTHERN ZONE - 83	<b>TVD Reference:</b>	WELL @ 5021.00ft (Original Well Elev)
<b>Reference Site:</b>	WELD_DRY CREEK 6-35 PAD	<b>MD Reference:</b>	WELL @ 5021.00ft (Original Well Elev)
<b>Site Error:</b>	0.00ft	<b>North Reference:</b>	True
<b>Reference Well:</b>	P_DRY CREEK 21-35	<b>Survey Calculation Method:</b>	Minimum Curvature
<b>Well Error:</b>	0.00ft	<b>Output errors are at</b>	2.00 sigma
<b>Reference Wellbore</b>	P_DRY CREEK 21-35	<b>Database:</b>	EDM 2003.21 Single User Db
<b>Reference Design:</b>	PLAN #1 10-28-09 RHS	<b>Offset TVD Reference:</b>	Offset Datum

Offset Design												Offset Site Error:	0.00 ft
WELD_DRY CREEK 6-35 PAD - P_DRY CREEK 22-35 - P_DRY CREEK 22-35 - PLAN #1 10-28-09 R												Offset Well Error:	0.00 ft
Survey Program: 0-MWD													
Reference		Offset		Semi Major Axis			Distance						
Measured Depth (ft)	Vertical Depth (ft)	Measured Depth (ft)	Vertical Depth (ft)	Reference (ft)	Offset (ft)	Highside Toolface (°)	Offset Wellbore Centre +N/-S (ft)	+E/-W (ft)	Between Centres (ft)	Between Ellipses (ft)	Minimum Separation (ft)	Separation Factor	Warning
6,400.00	6,309.31	6,378.66	6,296.24	21.80	21.70	-135.33	-455.28	-831.89	1,792.85	1,761.75	31.11	57.634	
6,500.00	6,409.31	6,491.74	6,409.31	21.94	21.84	-135.33	-455.32	-831.96	1,792.88	1,761.39	31.50	56.922	
6,600.00	6,509.31	6,591.74	6,509.31	22.08	21.97	-135.33	-455.32	-831.96	1,792.88	1,761.02	31.86	56.265	
6,700.00	6,609.31	6,691.74	6,609.31	22.22	22.10	-135.33	-455.32	-831.96	1,792.88	1,760.65	32.23	55.621	
6,800.00	6,709.31	6,791.74	6,709.31	22.36	22.23	-135.33	-455.32	-831.96	1,792.88	1,760.28	32.61	54.987	
6,900.00	6,809.31	6,891.74	6,809.31	22.50	22.36	-135.33	-455.32	-831.96	1,792.88	1,759.91	32.98	54.365	
7,000.00	6,909.31	6,991.74	6,909.31	22.64	22.50	-135.33	-455.32	-831.96	1,792.88	1,759.53	33.35	53.753	
7,100.00	7,009.31	7,091.74	7,009.31	22.79	22.63	-135.33	-455.32	-831.96	1,792.88	1,759.15	33.73	53.152	
7,200.00	7,109.31	7,191.74	7,109.31	22.94	22.77	-135.33	-455.32	-831.96	1,792.88	1,758.77	34.11	52.562	
7,300.00	7,209.31	7,291.74	7,209.31	23.08	22.91	-135.33	-455.32	-831.96	1,792.88	1,758.39	34.49	51.982	
7,400.00	7,309.31	7,391.74	7,309.31	23.23	23.05	-135.33	-455.32	-831.96	1,792.88	1,758.01	34.87	51.412	
7,500.00	7,409.31	7,491.74	7,409.31	23.38	23.19	-135.33	-455.32	-831.96	1,792.88	1,757.63	35.26	50.853	
7,600.00	7,509.31	7,591.74	7,509.31	23.53	23.33	-135.33	-455.32	-831.96	1,792.88	1,757.24	35.64	50.303	
7,700.00	7,609.31	7,691.74	7,609.31	23.69	23.47	-135.33	-455.32	-831.96	1,792.88	1,756.86	36.03	49.763	
7,800.00	7,709.31	7,791.74	7,709.31	23.84	23.62	-135.33	-455.32	-831.96	1,792.88	1,756.47	36.42	49.233	
7,900.00	7,809.31	7,891.74	7,809.31	23.99	23.76	-135.33	-455.32	-831.96	1,792.88	1,756.08	36.81	48.712	
8,000.00	7,909.31	7,991.74	7,909.31	24.15	23.91	-135.33	-455.32	-831.96	1,792.88	1,755.69	37.20	48.200	
8,100.00	8,009.31	8,091.74	8,009.31	24.31	24.06	-135.33	-455.32	-831.96	1,792.88	1,755.30	37.59	47.697	
8,200.00	8,109.31	8,191.74	8,109.31	24.47	24.21	-135.33	-455.32	-831.96	1,792.88	1,754.90	37.98	47.202	
8,300.00	8,209.31	8,291.74	8,209.31	24.62	24.36	-135.33	-455.32	-831.96	1,792.88	1,754.51	38.38	46.717	
8,365.69	8,275.00	8,357.42	8,275.00	24.73	24.46	-135.33	-455.32	-831.96	1,792.88	1,754.25	38.64	46.402	

<b>Company:</b>	US ROCKIES REGION PLANNING	<b>Local Co-ordinate Reference:</b>	Well P_DRY CREEK 21-35
<b>Project:</b>	COLORADO NOTHERN ZONE - 83	<b>TVD Reference:</b>	WELL @ 5021.00ft (Original Well Elev)
<b>Reference Site:</b>	WELD_DRY CREEK 6-35 PAD	<b>MD Reference:</b>	WELL @ 5021.00ft (Original Well Elev)
<b>Site Error:</b>	0.00ft	<b>North Reference:</b>	True
<b>Reference Well:</b>	P_DRY CREEK 21-35	<b>Survey Calculation Method:</b>	Minimum Curvature
<b>Well Error:</b>	0.00ft	<b>Output errors are at</b>	2.00 sigma
<b>Reference Wellbore</b>	P_DRY CREEK 21-35	<b>Database:</b>	EDM 2003.21 Single User Db
<b>Reference Design:</b>	PLAN #1 10-28-09 RHS	<b>Offset TVD Reference:</b>	Offset Datum

Offset Design WELD_DRY CREEK 6-35 PAD - P_DRY CREEK 29-35 - P_DRY CREEK 29-35 - PLAN #1 10-28-09 R													Offset Site Error:	0.00 ft
Survey Program: 0-MWD													Offset Well Error:	0.00 ft
Reference		Offset		Semi Major Axis			Distance							Warning
Measured Depth (ft)	Vertical Depth (ft)	Measured Depth (ft)	Vertical Depth (ft)	Reference (ft)	Offset (ft)	Highside Toolface (°)	Offset Wellbore Centre +N/-S (ft)	+E/-W (ft)	Between Centres (ft)	Between Ellipses (ft)	Minimum Separation (ft)	Separation Factor		
0.00	0.00	0.00	0.00	0.00	0.00	-111.08	-29.15	-75.63	81.05					
100.00	100.00	100.00	100.00	0.10	0.10	-111.08	-29.15	-75.63	81.05	80.86	0.19	424.249		
200.00	200.00	200.00	200.00	0.32	0.32	-111.08	-29.15	-75.63	81.05	80.41	0.64	126.531		
294.93	294.93	294.95	294.93	0.53	0.53	-109.96	-27.67	-76.17	81.04	79.97	1.07	75.943 CC		
300.00	300.00	300.01	299.99	0.55	0.54	-109.84	-27.51	-76.23	81.04	79.95	1.09	74.356		
400.00	400.00	399.79	399.62	0.77	0.78	-106.16	-22.60	-78.01	81.22	79.67	1.55	52.566 ES		
500.00	500.00	499.07	498.53	0.99	1.02	-100.15	-14.49	-80.96	82.26	80.24	2.02	40.755		
600.00	600.00	597.65	596.37	1.22	1.30	-92.19	-3.25	-85.04	85.18	82.66	2.52	33.770		
700.00	700.00	695.28	692.82	1.44	1.62	-83.05	10.99	-90.21	91.16	88.10	3.06	29.752		
800.00	800.00	791.77	787.57	1.67	1.98	-73.75	28.10	-96.42	101.20	97.56	3.64	27.812		
900.00	900.00	886.91	880.35	1.89	2.38	-65.19	47.89	-103.61	115.82	111.59	4.23	27.360 SF		
1,000.00	1,000.00	980.53	970.91	2.12	2.83	-57.86	70.18	-111.71	135.09	130.26	4.84	27.933		
1,100.00	1,100.00	1,072.48	1,059.05	2.34	3.32	-51.85	94.77	-120.64	158.78	153.34	5.44	29.174		
1,200.00	1,200.00	1,162.61	1,144.60	2.57	3.86	-47.02	121.44	-130.33	186.55	180.50	6.05	30.828		
1,250.00	1,250.00	1,206.95	1,186.34	2.68	4.13	-44.99	135.48	-135.43	201.86	195.51	6.35	31.777		
1,300.00	1,300.00	1,250.89	1,227.48	2.79	4.43	-70.56	150.00	-140.70	217.94	211.97	5.97	36.505		
1,400.00	1,399.93	1,337.84	1,308.16	3.01	5.03	-67.50	180.46	-151.77	251.66	245.22	6.45	39.039		
1,500.00	1,499.68	1,423.50	1,386.64	3.24	5.67	-65.43	212.71	-163.48	287.08	280.13	6.94	41.360		
1,600.00	1,599.13	1,515.27	1,469.98	3.47	6.40	-64.06	248.83	-176.60	322.98	315.50	7.49	43.136		
1,700.00	1,698.15	1,609.11	1,555.18	3.72	7.15	-63.39	285.80	-190.03	357.52	349.45	8.08	44.271		
1,800.00	1,796.63	1,703.43	1,640.81	4.00	7.91	-63.24	322.95	-203.53	390.61	381.90	8.71	44.849		
1,835.04	1,830.98	1,736.57	1,670.90	4.10	8.18	-63.28	336.01	-208.27	401.85	392.91	8.94	44.928		
1,900.00	1,894.59	1,798.05	1,726.72	4.30	8.68	-63.78	360.23	-217.07	422.56	413.16	9.40	44.956		
2,000.00	1,992.51	1,892.69	1,812.65	4.63	9.45	-64.45	397.51	-230.61	454.49	444.37	10.12	44.903		
2,100.00	2,090.44	1,987.33	1,898.57	4.98	10.22	-65.04	434.80	-244.15	486.46	475.60	10.86	44.774		
2,200.00	2,188.36	2,081.97	1,984.50	5.34	11.00	-65.55	472.08	-257.70	518.48	506.85	11.63	44.598		
2,300.00	2,286.28	2,176.61	2,070.43	5.70	11.77	-66.00	509.37	-271.24	550.52	538.12	12.40	44.394		
2,400.00	2,384.20	2,271.25	2,156.35	6.08	12.55	-66.40	546.65	-284.78	582.60	569.41	13.19	44.176		
2,500.00	2,482.12	2,365.89	2,242.28	6.47	13.33	-66.77	583.93	-298.33	614.70	600.71	13.99	43.952		
2,600.00	2,580.05	2,460.53	2,328.21	6.86	14.11	-67.09	621.22	-311.87	646.82	632.02	14.79	43.729		
2,700.00	2,677.97	2,555.17	2,414.13	7.26	14.89	-67.39	658.50	-325.41	678.95	663.35	15.61	43.508		
2,800.00	2,775.89	2,649.81	2,500.06	7.66	15.67	-67.65	695.79	-338.95	711.10	694.68	16.42	43.294		
2,900.00	2,873.81	2,744.46	2,585.99	8.06	16.45	-67.90	733.07	-352.50	743.26	726.01	17.25	43.088		
3,000.00	2,971.73	2,839.10	2,671.91	8.47	17.23	-68.12	770.35	-366.04	775.44	757.36	18.08	42.890		
3,100.00	3,069.66	2,933.74	2,757.84	8.88	18.01	-68.33	807.64	-379.58	807.62	788.71	18.91	42.700		
3,200.00	3,167.58	3,028.38	2,843.77	9.29	18.79	-68.52	844.92	-393.13	839.81	820.06	19.75	42.519		
3,300.00	3,265.50	3,123.02	2,929.69	9.71	19.57	-68.70	882.21	-406.67	872.01	851.42	20.59	42.347		
3,400.00	3,363.42	3,217.66	3,015.62	10.13	20.35	-68.86	919.49	-420.21	904.22	882.78	21.44	42.183		
3,500.00	3,461.34	3,312.30	3,101.55	10.54	21.13	-69.02	956.77	-433.76	936.43	914.15	22.28	42.027		
3,600.00	3,559.27	3,406.94	3,187.47	10.96	21.92	-69.16	994.06	-447.30	968.65	945.52	23.13	41.879		
3,700.00	3,657.19	3,501.58	3,273.40	11.38	22.70	-69.29	1,031.34	-460.84	1,000.88	976.90	23.98	41.738		
3,800.00	3,755.11	3,596.22	3,359.33	11.81	23.48	-69.42	1,068.63	-474.38	1,033.10	1,008.27	24.83	41.603		
3,900.00	3,853.03	3,690.86	3,445.25	12.23	24.27	-69.53	1,105.91	-487.93	1,065.34	1,039.65	25.69	41.476		
4,000.00	3,950.95	3,785.51	3,531.18	12.65	25.05	-69.65	1,143.19	-501.47	1,097.57	1,071.03	26.54	41.354		
4,100.00	4,048.88	3,880.15	3,617.11	13.08	25.83	-69.75	1,180.48	-515.01	1,129.81	1,102.42	27.40	41.238		
4,200.00	4,146.80	3,974.79	3,703.03	13.50	26.61	-69.85	1,217.76	-528.56	1,162.06	1,133.80	28.26	41.127		
4,300.00	4,244.72	4,069.43	3,788.96	13.93	27.40	-69.94	1,255.05	-542.10	1,194.30	1,165.19	29.11	41.022		
4,400.00	4,342.64	4,164.07	3,874.89	14.36	28.18	-70.03	1,292.33	-555.64	1,226.55	1,196.58	29.97	40.921		
4,500.00	4,440.56	4,258.71	3,960.81	14.78	28.96	-70.11	1,329.61	-569.19	1,258.80	1,227.97	30.83	40.825		
4,600.00	4,538.49	4,353.35	4,046.74	15.21	29.75	-70.19	1,366.90	-582.73	1,291.05	1,259.36	31.70	40.733		
4,700.00	4,636.41	4,447.99	4,132.67	15.64	30.53	-70.27	1,404.18	-596.27	1,323.31	1,290.75	32.56	40.644		
4,800.00	4,734.33	4,542.63	4,218.59	16.07	31.32	-70.34	1,441.47	-609.81	1,355.57	1,322.15	33.42	40.560		

CC - Min centre to center distance or convergent point, SF - min separation factor, ES - min ellipse separation

<b>Company:</b>	US ROCKIES REGION PLANNING	<b>Local Co-ordinate Reference:</b>	Well P_DRY CREEK 21-35
<b>Project:</b>	COLORADO NOTHERN ZONE - 83	<b>TVD Reference:</b>	WELL @ 5021.00ft (Original Well Elev)
<b>Reference Site:</b>	WELD_DRY CREEK 6-35 PAD	<b>MD Reference:</b>	WELL @ 5021.00ft (Original Well Elev)
<b>Site Error:</b>	0.00ft	<b>North Reference:</b>	True
<b>Reference Well:</b>	P_DRY CREEK 21-35	<b>Survey Calculation Method:</b>	Minimum Curvature
<b>Well Error:</b>	0.00ft	<b>Output errors are at</b>	2.00 sigma
<b>Reference Wellbore</b>	P_DRY CREEK 21-35	<b>Database:</b>	EDM 2003.21 Single User Db
<b>Reference Design:</b>	PLAN #1 10-28-09 RHS	<b>Offset TVD Reference:</b>	Offset Datum

Offset Design WELD_DRY CREEK 6-35 PAD - P_DRY CREEK 29-35 - P_DRY CREEK 29-35 - PLAN #1 10-28-09 R												Offset Site Error:	0.00 ft
Survey Program: 0-MWD												Offset Well Error:	0.00 ft
Reference		Offset		Semi Major Axis			Distance						Warning
Measured Depth (ft)	Vertical Depth (ft)	Measured Depth (ft)	Vertical Depth (ft)	Reference (ft)	Offset (ft)	Highside Toolface (°)	Offset Wellbore Centre +N/-S (ft)	+E/-W (ft)	Between Centres (ft)	Between Ellipses (ft)	Minimum Separation (ft)	Separation Factor	
4,900.00	4,832.25	4,637.27	4,304.52	16.50	32.10	-70.41	1,478.75	-623.36	1,387.83	1,353.54	34.28	40.479	
5,000.00	4,930.17	4,731.92	4,390.45	16.93	32.88	-70.48	1,516.03	-636.90	1,420.09	1,384.94	35.15	40.402	
5,100.00	5,028.10	4,826.56	4,476.37	17.36	33.67	-70.54	1,553.32	-650.44	1,452.35	1,416.34	36.01	40.327	
5,200.00	5,126.02	4,921.20	4,562.30	17.79	34.45	-70.60	1,590.60	-663.99	1,484.61	1,447.73	36.88	40.256	
5,300.00	5,223.94	5,015.84	4,648.23	18.22	35.24	-70.66	1,627.89	-677.53	1,516.88	1,479.13	37.75	40.187	
5,400.00	5,321.86	5,110.48	4,734.15	18.65	36.02	-70.71	1,665.17	-691.07	1,549.15	1,510.53	38.61	40.121	
5,500.00	5,419.78	5,205.12	4,820.08	19.08	36.80	-70.76	1,702.46	-704.62	1,581.41	1,541.94	39.48	40.057	
5,600.00	5,517.71	5,299.76	4,906.01	19.51	37.59	-70.82	1,739.74	-718.16	1,613.68	1,573.34	40.35	39.996	
5,700.00	5,615.63	5,394.40	4,991.93	19.94	38.37	-70.86	1,777.02	-731.70	1,645.95	1,604.74	41.21	39.937	
5,808.65	5,722.02	5,497.23	5,085.29	20.41	39.22	-70.91	1,817.53	-746.42	1,681.02	1,638.86	42.16	39.875	
5,900.00	5,811.75	5,630.51	5,206.85	20.75	40.20	-71.50	1,868.90	-765.08	1,710.39	1,667.19	43.20	39.589	
6,000.00	5,910.55	5,841.08	5,403.47	21.03	41.38	-72.00	1,939.60	-790.76	1,738.40	1,694.03	44.36	39.186	
6,100.00	6,009.83	6,058.64	5,611.86	21.28	42.39	-72.37	1,998.19	-812.04	1,760.91	1,715.55	45.36	38.818	
6,200.00	6,109.46	6,281.95	5,830.04	21.50	43.20	-72.63	2,042.68	-828.20	1,777.64	1,731.46	46.18	38.492	
6,300.00	6,209.33	6,509.45	6,055.41	21.67	43.77	-72.76	2,071.46	-838.65	1,788.35	1,741.55	46.80	38.216	
6,393.69	6,303.00	6,724.83	6,270.37	21.79	44.07	-45.18	2,083.13	-842.89	1,792.79	1,745.62	47.17	38.006	
6,400.00	6,309.31	6,739.38	6,284.92	21.80	44.08	-45.18	2,083.37	-842.98	1,792.89	1,745.70	47.19	37.991	
6,500.00	6,409.31	6,863.77	6,409.31	21.94	44.17	-45.17	2,083.67	-843.09	1,793.02	1,745.55	47.46	37.777	
6,600.00	6,509.31	6,963.77	6,509.31	22.08	44.24	-45.17	2,083.67	-843.09	1,793.02	1,745.30	47.71	37.580	
6,700.00	6,609.31	7,063.77	6,609.31	22.22	44.30	-45.17	2,083.67	-843.09	1,793.02	1,745.05	47.97	37.382	
6,800.00	6,709.31	7,163.77	6,709.31	22.36	44.37	-45.17	2,083.67	-843.09	1,793.02	1,744.80	48.22	37.184	
6,900.00	6,809.31	7,263.77	6,809.31	22.50	44.44	-45.17	2,083.67	-843.09	1,793.02	1,744.54	48.48	36.986	
7,000.00	6,909.31	7,363.77	6,909.31	22.64	44.51	-45.17	2,083.67	-843.09	1,793.02	1,744.28	48.74	36.788	
7,100.00	7,009.31	7,463.77	7,009.31	22.79	44.58	-45.17	2,083.67	-843.09	1,793.02	1,744.01	49.00	36.590	
7,200.00	7,109.31	7,563.77	7,109.31	22.94	44.65	-45.17	2,083.67	-843.09	1,793.02	1,743.75	49.27	36.392	
7,300.00	7,209.31	7,663.77	7,209.31	23.08	44.72	-45.17	2,083.67	-843.09	1,793.02	1,743.48	49.54	36.194	
7,400.00	7,309.31	7,763.77	7,309.31	23.23	44.79	-45.17	2,083.67	-843.09	1,793.02	1,743.21	49.81	35.997	
7,500.00	7,409.31	7,863.77	7,409.31	23.38	44.87	-45.17	2,083.67	-843.09	1,793.02	1,742.93	50.08	35.800	
7,600.00	7,509.31	7,963.77	7,509.31	23.53	44.94	-45.17	2,083.67	-843.09	1,793.02	1,742.66	50.36	35.604	
7,700.00	7,609.31	8,063.77	7,609.31	23.69	45.02	-45.17	2,083.67	-843.09	1,793.02	1,742.38	50.64	35.408	
7,800.00	7,709.31	8,163.77	7,709.31	23.84	45.10	-45.17	2,083.67	-843.09	1,793.02	1,742.10	50.92	35.212	
7,900.00	7,809.31	8,263.77	7,809.31	23.99	45.18	-45.17	2,083.67	-843.09	1,793.02	1,741.81	51.20	35.017	
8,000.00	7,909.31	8,363.77	7,909.31	24.15	45.26	-45.17	2,083.67	-843.09	1,793.02	1,741.53	51.49	34.822	
8,100.00	8,009.31	8,463.77	8,009.31	24.31	45.34	-45.17	2,083.67	-843.09	1,793.02	1,741.24	51.78	34.628	
8,200.00	8,109.31	8,563.77	8,109.31	24.47	45.42	-45.17	2,083.67	-843.09	1,793.02	1,740.95	52.07	34.435	
8,300.00	8,209.31	8,663.77	8,209.31	24.62	45.50	-45.17	2,083.67	-843.09	1,793.02	1,740.65	52.36	34.243	
8,365.69	8,275.00	8,729.46	8,275.00	24.73	45.55	-45.17	2,083.67	-843.09	1,793.02	1,740.46	52.56	34.117	

<b>Company:</b>	US ROCKIES REGION PLANNING	<b>Local Co-ordinate Reference:</b>	Well P_DRY CREEK 21-35
<b>Project:</b>	COLORADO NOTHERN ZONE - 83	<b>TVD Reference:</b>	WELL @ 5021.00ft (Original Well Elev)
<b>Reference Site:</b>	WELD_DRY CREEK 6-35 PAD	<b>MD Reference:</b>	WELL @ 5021.00ft (Original Well Elev)
<b>Site Error:</b>	0.00ft	<b>North Reference:</b>	True
<b>Reference Well:</b>	P_DRY CREEK 21-35	<b>Survey Calculation Method:</b>	Minimum Curvature
<b>Well Error:</b>	0.00ft	<b>Output errors are at</b>	2.00 sigma
<b>Reference Wellbore</b>	P_DRY CREEK 21-35	<b>Database:</b>	EDM 2003.21 Single User Db
<b>Reference Design:</b>	PLAN #1 10-28-09 RHS	<b>Offset TVD Reference:</b>	Offset Datum

Offset Design WELD_DRY CREEK 6-35 PAD - P_DRY CREEK 3-35 - P_DRY CREEK 3-35 - PLAN #1 10-28-09 RHS												Offset Site Error:	0.00 ft
Survey Program: 0-UNKNOWN												Offset Well Error:	0.00 ft
Reference	Offset	Semi Major Axis					Distance						Warning
Measured Depth (ft)	Vertical Depth (ft)	Measured Depth (ft)	Vertical Depth (ft)	Reference (ft)	Offset (ft)	Highside Toolface (°)	Offset Wellbore Centre +N/-S (ft)	+E/-W (ft)	Between Centres (ft)	Between Ellipses (ft)	Minimum Separation (ft)	Separation Factor	
0.00	0.00	0.00	0.00	0.00	0.00	-117.46	-7.28	-14.01	15.78				
100.00	100.00	100.00	100.00	0.10	1.70	-117.46	-7.28	-14.01	15.78	13.99	1.80	8.790	
200.00	200.00	200.00	200.00	0.32	5.70	-117.46	-7.28	-14.01	15.78	9.76	6.02	2.622	
300.00	300.00	300.16	300.14	0.55	9.70	-111.30	-5.54	-14.21	15.25	5.01	10.24	1.489 Level 3	
379.45	379.45	379.57	379.45	0.72	12.88	-96.57	-1.69	-14.65	14.75	1.15	13.60	1.085 Level 2, CC	
400.00	400.00	400.07	399.91	0.77	13.70	-91.31	-0.34	-14.81	14.81	0.34	14.47	1.024 Level 2	
500.00	500.00	499.49	498.95	0.99	17.73	-62.39	8.26	-15.80	17.86	-0.86	18.72	0.954 Level 1, ES, SF	
600.00	600.00	598.20	596.92	1.22	21.79	-40.40	20.17	-17.17	26.67	3.71	22.95	1.162 Level 2	
700.00	700.00	695.97	693.49	1.44	25.90	-28.20	35.27	-18.91	40.54	13.41	27.13	1.494 Level 3	
800.00	800.00	792.58	788.37	1.67	30.06	-21.47	53.39	-21.00	58.54	27.28	31.26	1.872	
900.00	900.00	887.85	881.26	1.89	34.28	-17.48	74.36	-23.41	80.18	44.84	35.34	2.269	
1,000.00	1,000.00	981.59	971.93	2.12	38.57	-14.94	97.98	-26.14	105.22	65.86	39.37	2.673	
1,100.00	1,100.00	1,073.64	1,060.16	2.34	42.92	-13.22	124.04	-29.14	133.50	90.16	43.33	3.081	
1,200.00	1,200.00	1,163.87	1,145.79	2.57	47.33	-12.01	152.29	-32.40	164.87	117.63	47.23	3.490	
1,250.00	1,250.00	1,208.26	1,187.58	2.68	49.54	-11.53	167.17	-34.11	181.68	132.52	49.15	3.696	
1,300.00	1,300.00	1,252.28	1,228.77	2.79	51.80	-38.57	182.56	-35.88	198.90	149.18	49.72	4.000	
1,400.00	1,399.93	1,339.50	1,309.69	3.01	56.36	-37.96	214.90	-39.61	233.58	180.18	53.40	4.374	
1,500.00	1,499.68	1,426.30	1,389.19	3.24	61.04	-37.79	249.49	-43.60	268.51	211.43	57.07	4.705	
1,600.00	1,599.13	1,520.45	1,474.95	3.47	66.25	-38.01	288.10	-48.05	302.05	241.02	61.03	4.949	
1,700.00	1,698.15	1,615.39	1,561.43	3.72	71.55	-38.53	327.03	-52.53	333.05	267.98	65.06	5.119	
1,800.00	1,796.63	1,711.02	1,648.53	4.00	76.93	-39.29	366.24	-57.05	361.54	292.37	69.17	5.227	
1,835.04	1,830.98	1,744.66	1,679.17	4.10	78.84	-39.60	380.04	-58.64	370.94	300.32	70.62	5.252	
1,900.00	1,894.59	1,807.10	1,736.04	4.30	82.38	-40.40	405.64	-61.59	388.12	314.86	73.26	5.298	
2,000.00	1,992.51	1,903.22	1,823.59	4.63	87.85	-41.49	445.05	-66.13	414.70	337.36	77.35	5.362	
2,100.00	2,090.44	1,999.33	1,911.14	4.98	93.34	-42.46	484.46	-70.68	441.41	359.95	81.46	5.419	
2,200.00	2,188.36	2,095.45	1,998.69	5.34	98.86	-43.31	523.87	-75.22	468.22	382.61	85.60	5.470	
2,300.00	2,286.28	2,191.57	2,086.23	5.70	104.38	-44.08	563.29	-79.76	495.11	405.34	89.77	5.515	
2,400.00	2,384.20	2,287.68	2,173.78	6.08	109.93	-44.76	602.70	-84.30	522.08	428.12	93.96	5.556	
2,500.00	2,482.12	2,383.80	2,261.33	6.47	115.48	-45.38	642.11	-88.84	549.11	450.94	98.17	5.593	
2,600.00	2,580.05	2,479.92	2,348.87	6.86	121.04	-45.94	681.52	-93.39	576.19	473.79	102.40	5.627	
2,700.00	2,677.97	2,576.03	2,436.42	7.26	126.62	-46.45	720.93	-97.93	603.32	496.68	106.64	5.657	
2,800.00	2,775.89	2,672.15	2,523.97	7.66	132.20	-46.91	760.34	-102.47	630.50	519.60	110.90	5.685	
2,900.00	2,873.81	2,768.27	2,611.51	8.06	137.78	-47.34	799.76	-107.01	657.70	542.53	115.17	5.711	
3,000.00	2,971.73	2,864.38	2,699.06	8.47	143.37	-47.73	839.17	-111.55	684.94	565.49	119.45	5.734	
3,100.00	3,069.66	2,960.50	2,786.61	8.88	148.97	-48.10	878.58	-116.10	712.21	588.46	123.75	5.755	
3,200.00	3,167.58	3,056.62	2,874.16	9.29	154.57	-48.43	917.99	-120.64	739.50	611.45	128.05	5.775	
3,300.00	3,265.50	3,152.73	2,961.70	9.71	160.18	-48.75	957.40	-125.18	766.81	634.45	132.36	5.793	
3,400.00	3,363.42	3,248.85	3,049.25	10.13	165.79	-49.04	996.81	-129.72	794.14	657.46	136.68	5.810	
3,500.00	3,461.34	3,344.96	3,136.80	10.54	171.40	-49.31	1,036.22	-134.26	821.49	680.48	141.01	5.826	
3,600.00	3,559.27	3,441.08	3,224.34	10.96	177.02	-49.56	1,075.64	-138.81	848.86	703.52	145.34	5.841	
3,700.00	3,657.19	3,537.20	3,311.89	11.38	182.64	-49.80	1,115.05	-143.35	876.24	726.56	149.68	5.854	
3,800.00	3,755.11	3,633.31	3,399.44	11.81	188.26	-50.03	1,154.46	-147.89	903.63	749.61	154.02	5.867	
3,900.00	3,853.03	3,729.43	3,486.99	12.23	193.88	-50.24	1,193.87	-152.43	931.03	772.66	158.37	5.879	
4,000.00	3,950.95	3,838.87	3,586.79	12.65	200.24	-50.47	1,238.47	-157.57	958.25	794.97	163.29	5.869	
4,100.00	4,048.88	3,982.00	3,719.38	13.08	208.27	-50.85	1,291.98	-163.74	982.05	812.38	169.68	5.788	
4,200.00	4,146.80	4,127.96	3,857.19	13.50	215.97	-51.34	1,339.70	-169.24	1,001.20	824.92	176.28	5.679	
4,300.00	4,244.72	4,276.04	3,999.32	13.93	223.30	-51.96	1,380.93	-173.99	1,015.60	832.53	183.07	5.547	
4,400.00	4,342.64	4,425.49	4,144.75	14.36	230.17	-52.70	1,415.09	-177.93	1,025.20	835.19	190.01	5.396	
4,500.00	4,440.56	4,575.52	4,292.33	14.78	236.56	-53.57	1,441.76	-181.00	1,029.99	832.95	197.04	5.227	
4,600.00	4,538.49	4,725.29	4,440.87	15.21	242.44	-54.58	1,460.69	-183.18	1,030.02	825.89	204.13	5.046	
4,700.00	4,636.41	4,874.00	4,589.14	15.64	247.79	-55.74	1,471.83	-184.46	1,025.39	814.15	211.24	4.854	
4,800.00	4,734.33	5,019.25	4,734.33	16.07	252.57	-57.05	1,475.32	-184.87	1,016.24	797.99	218.25	4.656	

CC - Min centre to center distance or convergent point, SF - min separation factor, ES - min ellipse separation

<b>Company:</b>	US ROCKIES REGION PLANNING	<b>Local Co-ordinate Reference:</b>	Well P_DRY CREEK 21-35
<b>Project:</b>	COLORADO NOTHERN ZONE - 83	<b>TVD Reference:</b>	WELL @ 5021.00ft (Original Well Elev)
<b>Reference Site:</b>	WELD_DRY CREEK 6-35 PAD	<b>MD Reference:</b>	WELL @ 5021.00ft (Original Well Elev)
<b>Site Error:</b>	0.00ft	<b>North Reference:</b>	True
<b>Reference Well:</b>	P_DRY CREEK 21-35	<b>Survey Calculation Method:</b>	Minimum Curvature
<b>Well Error:</b>	0.00ft	<b>Output errors are at</b>	2.00 sigma
<b>Reference Wellbore</b>	P_DRY CREEK 21-35	<b>Database:</b>	EDM 2003.21 Single User Db
<b>Reference Design:</b>	PLAN #1 10-28-09 RHS	<b>Offset TVD Reference:</b>	Offset Datum

Offset Design WELD_DRY CREEK 6-35 PAD - P_DRY CREEK 3-35 - P_DRY CREEK 3-35 - PLAN #1 10-28-09 RHS												Offset Site Error:	0.00 ft
Survey Program: 0-UNKNOWN												Offset Well Error:	0.00 ft
Reference	Offset	Semi Major Axis					Distance						Warning
Measured Depth (ft)	Vertical Depth (ft)	Measured Depth (ft)	Vertical Depth (ft)	Reference (ft)	Offset (ft)	Highside Toolface (°)	Offset Wellbore Centre +N/-S (ft)	+E/-W (ft)	Between Centres (ft)	Between Ellipses (ft)	Minimum Separation (ft)	Separation Factor	
4,900.00	4,832.25	5,117.17	4,832.25	16.50	255.65	-58.01	1,475.32	-184.87	1,005.19	782.07	223.12	4.505	
5,000.00	4,930.17	5,215.09	4,930.17	16.93	258.74	-58.98	1,475.32	-184.87	994.43	766.42	228.01	4.361	
5,100.00	5,028.10	5,313.01	5,028.10	17.36	261.85	-59.98	1,475.32	-184.87	983.97	751.04	232.93	4.224	
5,200.00	5,126.02	5,410.93	5,126.02	17.79	264.99	-61.00	1,475.32	-184.87	973.82	735.95	237.87	4.094	
5,300.00	5,223.94	5,508.86	5,223.94	18.22	268.15	-62.03	1,475.32	-184.87	963.99	721.15	242.83	3.970	
5,400.00	5,321.86	5,606.78	5,321.86	18.65	271.32	-63.09	1,475.32	-184.87	954.49	706.67	247.82	3.852	
5,500.00	5,419.78	5,704.70	5,419.78	19.08	274.52	-64.17	1,475.32	-184.87	945.33	692.50	252.83	3.739	
5,600.00	5,517.71	5,802.62	5,517.71	19.51	277.73	-65.27	1,475.32	-184.87	936.52	678.65	257.86	3.632	
5,700.00	5,615.63	5,900.54	5,615.63	19.94	280.96	-66.38	1,475.32	-184.87	928.06	665.15	262.91	3.530	
5,808.65	5,722.02	6,006.93	5,722.02	20.41	284.50	-67.62	1,475.32	-184.87	919.30	650.89	268.42	3.425	
5,900.00	5,811.75	6,096.67	5,811.75	20.75	287.49	-68.48	1,475.32	-184.87	912.81	640.40	272.41	3.351	
6,000.00	5,910.55	6,195.47	5,910.55	21.03	290.80	-69.27	1,475.32	-184.87	907.19	630.58	276.61	3.280	
6,100.00	6,009.83	6,294.74	6,009.83	21.28	294.14	-69.89	1,475.32	-184.87	902.99	622.32	280.66	3.217	
6,200.00	6,109.46	6,394.38	6,109.46	21.50	297.52	-70.35	1,475.32	-184.87	900.09	615.55	284.54	3.163	
6,300.00	6,209.33	6,494.25	6,209.33	21.67	300.91	-70.61	1,475.32	-184.87	898.41	610.20	288.21	3.117	
6,393.69	6,303.00	6,587.92	6,303.00	21.79	304.11	-43.09	1,475.32	-184.87	897.90	606.44	291.46	3.081	
6,400.00	6,309.31	6,594.23	6,309.31	21.80	304.32	-43.09	1,475.32	-184.87	897.90	606.20	291.71	3.078	
6,500.00	6,409.31	6,694.23	6,409.31	21.94	307.75	-43.09	1,475.32	-184.87	897.90	602.30	295.60	3.038	
6,600.00	6,509.31	6,794.23	6,509.31	22.08	311.19	-43.09	1,475.32	-184.87	897.90	598.40	299.51	2.998	
6,700.00	6,609.31	6,894.23	6,609.31	22.22	314.64	-43.09	1,475.32	-184.87	897.90	594.49	303.42	2.959	
6,800.00	6,709.31	6,994.23	6,709.31	22.36	318.11	-43.09	1,475.32	-184.87	897.90	590.57	307.33	2.922	
6,900.00	6,809.31	7,094.23	6,809.31	22.50	321.59	-43.09	1,475.32	-184.87	897.90	586.64	311.26	2.885	
7,000.00	6,909.31	7,194.23	6,909.31	22.64	325.08	-43.09	1,475.32	-184.87	897.90	582.71	315.19	2.849	
7,100.00	7,009.31	7,294.23	7,009.31	22.79	328.59	-43.09	1,475.32	-184.87	897.90	578.77	319.13	2.814	
7,200.00	7,109.31	7,394.23	7,109.31	22.94	332.10	-43.09	1,475.32	-184.87	897.90	574.82	323.08	2.779	
7,300.00	7,209.31	7,494.23	7,209.31	23.08	335.62	-43.09	1,475.32	-184.87	897.90	570.87	327.04	2.746	
7,400.00	7,309.31	7,594.23	7,309.31	23.23	339.16	-43.09	1,475.32	-184.87	897.90	566.91	331.00	2.713	
7,500.00	7,409.31	7,694.23	7,409.31	23.38	342.71	-43.09	1,475.32	-184.87	897.90	562.94	334.96	2.681	
7,600.00	7,509.31	7,794.23	7,509.31	23.53	346.26	-43.09	1,475.32	-184.87	897.90	558.97	338.93	2.649	
7,700.00	7,609.31	7,894.23	7,609.31	23.69	349.83	-43.09	1,475.32	-184.87	897.90	554.99	342.91	2.618	
7,800.00	7,709.31	7,994.23	7,709.31	23.84	353.40	-43.09	1,475.32	-184.87	897.90	551.01	346.89	2.588	
7,900.00	7,809.31	8,094.23	7,809.31	23.99	356.99	-43.09	1,475.32	-184.87	897.90	547.02	350.88	2.559	
7,947.66	7,856.97	8,141.89	7,856.97	24.07	358.70	-43.09	1,475.32	-184.87	897.90	545.12	352.78	2.545	
8,000.00	7,909.31	8,157.92	7,873.00	24.15	359.27	-43.09	1,475.32	-184.87	898.64	545.16	353.48	2.542	
8,100.00	8,009.31	8,157.92	7,873.00	24.31	359.27	-43.09	1,475.32	-184.87	908.19	554.55	353.64	2.568	
8,200.00	8,109.31	8,157.92	7,873.00	24.47	359.27	-43.09	1,475.32	-184.87	928.48	574.67	353.81	2.624	
8,300.00	8,209.31	8,157.92	7,873.00	24.62	359.27	-43.09	1,475.32	-184.87	958.82	604.85	353.97	2.709	
8,365.69	8,275.00	8,157.92	7,873.00	24.73	359.27	-43.09	1,475.32	-184.87	983.79	629.71	354.08	2.778	



<b>Company:</b>	US ROCKIES REGION PLANNING	<b>Local Co-ordinate Reference:</b>	Well P_DRY CREEK 21-35
<b>Project:</b>	COLORADO NOTHERN ZONE - 83	<b>TVD Reference:</b>	WELL @ 5021.00ft (Original Well Elev)
<b>Reference Site:</b>	WELD_DRY CREEK 6-35 PAD	<b>MD Reference:</b>	WELL @ 5021.00ft (Original Well Elev)
<b>Site Error:</b>	0.00ft	<b>North Reference:</b>	True
<b>Reference Well:</b>	P_DRY CREEK 21-35	<b>Survey Calculation Method:</b>	Minimum Curvature
<b>Well Error:</b>	0.00ft	<b>Output errors are at</b>	2.00 sigma
<b>Reference Wellbore</b>	P_DRY CREEK 21-35	<b>Database:</b>	EDM 2003.21 Single User Db
<b>Reference Design:</b>	PLAN #1 10-28-09 RHS	<b>Offset TVD Reference:</b>	Offset Datum

Offset Design WELD_DRY CREEK 6-35 PAD - P_DRY CREEK 4-35 - P_DRY CREEK 4-35 - PLAN #1 10-28-09 RHS													Offset Site Error: 0.00 ft
Survey Program: 0-MWD													Offset Well Error: 0.00 ft
Measured Depth (ft)	Vertical Depth (ft)	Measured Depth (ft)	Vertical Depth (ft)	Reference (ft)	Offset (ft)	Highside Toolface (°)	Offset Wellbore Centre +N/-S (ft)	+E/-W (ft)	Between Centres (ft)	Between Ellipses (ft)	Minimum Separation (ft)	Separation Factor	Warning
0.00	0.00	0.00	0.00	0.00	0.00	-115.31	-14.57	-30.81	34.08				
100.00	100.00	100.00	100.00	0.10	0.10	-115.31	-14.57	-30.81	34.08	33.89	0.19	178.405	
200.00	200.00	200.00	200.00	0.32	0.32	-115.31	-14.57	-30.81	34.08	33.44	0.64	53.208 CC, ES	
300.00	300.00	299.57	299.55	0.55	0.54	-112.61	-13.34	-32.03	34.70	33.61	1.09	31.929	
400.00	400.00	398.89	398.73	0.77	0.77	-105.16	-9.66	-35.67	36.97	35.43	1.54	24.011	
500.00	500.00	497.74	497.21	0.99	1.02	-94.91	-3.58	-41.68	41.93	39.92	2.01	20.853	
600.00	600.00	595.89	594.63	1.22	1.30	-84.46	4.85	-50.02	50.54	48.04	2.50	20.210 SF	
700.00	700.00	693.11	690.68	1.44	1.62	-75.62	15.53	-60.58	63.23	60.22	3.01	21.041	
800.00	800.00	789.19	785.05	1.67	1.98	-68.84	28.36	-73.26	79.97	76.45	3.52	22.710	
900.00	900.00	883.95	877.47	1.89	2.39	-63.84	43.21	-87.95	100.54	96.50	4.05	24.830	
1,000.00	1,000.00	977.21	967.71	2.12	2.84	-60.16	59.94	-104.49	124.71	120.12	4.59	27.173	
1,100.00	1,100.00	1,068.81	1,055.55	2.34	3.34	-57.43	78.39	-122.74	152.27	147.12	5.14	29.609	
1,200.00	1,200.00	1,158.61	1,140.82	2.57	3.88	-55.38	98.41	-142.54	183.04	177.33	5.71	32.065	
1,250.00	1,250.00	1,200.00	1,179.82	2.68	4.14	-54.59	108.28	-152.29	199.61	193.63	5.98	33.380	
1,300.00	1,300.00	1,246.54	1,223.42	2.79	4.46	-81.15	119.85	-163.73	216.82	211.09	5.72	37.874	
1,400.00	1,399.93	1,332.74	1,303.45	3.01	5.07	-79.90	142.60	-186.23	253.04	246.84	6.20	40.809	
1,500.00	1,499.68	1,417.13	1,380.84	3.24	5.72	-79.32	166.53	-209.89	291.43	284.74	6.69	43.590	
1,600.00	1,599.13	1,507.19	1,462.70	3.47	6.46	-79.26	193.22	-236.29	331.06	323.85	7.21	45.898	
1,700.00	1,698.15	1,598.94	1,546.08	3.72	7.21	-79.62	220.45	-263.22	370.24	362.47	7.77	47.625	
1,800.00	1,796.63	1,690.63	1,629.40	4.00	7.98	-80.28	247.67	-290.13	409.02	400.64	8.37	48.847	
1,835.04	1,830.98	1,722.73	1,658.57	4.10	8.25	-80.56	257.19	-299.55	422.54	413.94	8.59	49.163	
1,900.00	1,894.59	1,782.21	1,712.62	4.30	8.74	-81.59	274.84	-317.00	447.63	438.61	9.02	49.603	
2,000.00	1,992.51	1,873.77	1,795.82	4.63	9.51	-82.96	302.02	-343.87	486.47	476.76	9.71	50.084	
2,100.00	2,090.44	1,965.33	1,879.03	4.98	10.28	-84.14	329.19	-370.74	525.52	515.09	10.43	50.390	
2,200.00	2,188.36	2,056.89	1,962.23	5.34	11.06	-85.15	356.37	-397.61	564.73	553.56	11.17	50.570	
2,300.00	2,286.28	2,148.45	2,045.43	5.70	11.83	-86.03	383.54	-424.49	604.07	592.15	11.92	50.662	
2,400.00	2,384.20	2,240.01	2,128.64	6.08	12.61	-86.81	410.71	-451.36	643.52	630.83	12.69	50.692	
2,500.00	2,482.12	2,331.57	2,211.84	6.47	13.38	-87.49	437.89	-478.23	683.06	669.58	13.48	50.679	
2,600.00	2,580.05	2,423.13	2,295.05	6.86	14.16	-88.10	465.06	-505.10	722.67	708.40	14.27	50.636	
2,700.00	2,677.97	2,514.69	2,378.25	7.26	14.94	-88.65	492.23	-531.97	762.34	747.27	15.07	50.573	
2,800.00	2,775.89	2,606.25	2,461.46	7.66	15.72	-89.14	519.41	-558.84	802.07	786.19	15.88	50.496	
2,900.00	2,873.81	2,697.81	2,544.66	8.06	16.50	-89.59	546.58	-585.71	841.84	825.14	16.70	50.411	
3,000.00	2,971.73	2,789.37	2,627.86	8.47	17.28	-90.00	573.75	-612.58	881.66	864.13	17.52	50.321	
3,100.00	3,069.66	2,880.93	2,711.07	8.88	18.06	-90.37	600.93	-639.45	921.50	903.15	18.35	50.228	
3,200.00	3,167.58	2,972.50	2,794.27	9.29	18.84	-90.71	628.10	-666.32	961.38	942.20	19.18	50.135	
3,300.00	3,265.50	3,064.06	2,877.48	9.71	19.62	-91.03	655.27	-693.19	1,001.28	981.27	20.01	50.042	
3,400.00	3,363.42	3,155.62	2,960.68	10.13	20.40	-91.32	682.45	-720.06	1,041.21	1,020.36	20.85	49.950	
3,500.00	3,461.34	3,247.18	3,043.89	10.54	21.19	-91.58	709.62	-746.93	1,081.15	1,059.47	21.68	49.860	
3,600.00	3,559.27	3,338.74	3,127.09	10.96	21.97	-91.83	736.80	-773.80	1,121.12	1,098.59	22.52	49.773	
3,700.00	3,657.19	3,430.30	3,210.29	11.38	22.75	-92.07	763.97	-800.67	1,161.10	1,137.73	23.37	49.688	
3,800.00	3,755.11	3,521.86	3,293.50	11.81	23.53	-92.28	791.14	-827.54	1,201.10	1,176.89	24.21	49.606	
3,900.00	3,853.03	3,613.42	3,376.70	12.23	24.31	-92.49	818.32	-854.42	1,241.11	1,216.05	25.06	49.526	
4,000.00	3,950.95	3,704.98	3,459.91	12.65	25.10	-92.68	845.49	-881.29	1,281.13	1,255.22	25.91	49.450	
4,100.00	4,048.88	3,796.54	3,543.11	13.08	25.88	-92.86	872.66	-908.16	1,321.17	1,294.41	26.76	49.376	
4,200.00	4,146.80	3,888.10	3,626.31	13.50	26.66	-93.02	899.84	-935.03	1,361.21	1,333.60	27.61	49.305	
4,300.00	4,244.72	3,979.66	3,709.52	13.93	27.45	-93.18	927.01	-961.90	1,401.26	1,372.80	28.46	49.236	
4,400.00	4,342.64	4,071.22	3,792.72	14.36	28.23	-93.33	954.18	-988.77	1,441.33	1,412.01	29.31	49.170	
4,500.00	4,440.56	4,162.79	3,875.93	14.78	29.01	-93.47	981.36	-1,015.64	1,481.40	1,451.23	30.17	49.107	
4,600.00	4,538.49	4,254.35	3,959.13	15.21	29.80	-93.61	1,008.53	-1,042.51	1,521.48	1,490.45	31.02	49.046	
4,700.00	4,636.41	4,345.91	4,042.34	15.64	30.58	-93.74	1,035.70	-1,069.38	1,561.56	1,529.68	31.88	48.987	
4,800.00	4,734.33	4,437.47	4,125.54	16.07	31.36	-93.86	1,062.88	-1,096.25	1,601.65	1,568.92	32.73	48.931	
4,900.00	4,832.25	4,529.03	4,208.74	16.50	32.15	-93.97	1,090.05	-1,123.12	1,641.75	1,608.16	33.59	48.876	

CC - Min centre to center distance or convergent point, SF - min separation factor, ES - min ellipse separation

<b>Company:</b>	US ROCKIES REGION PLANNING	<b>Local Co-ordinate Reference:</b>	Well P_DRY CREEK 21-35
<b>Project:</b>	COLORADO NOTHERN ZONE - 83	<b>TVD Reference:</b>	WELL @ 5021.00ft (Original Well Elev)
<b>Reference Site:</b>	WELD_DRY CREEK 6-35 PAD	<b>MD Reference:</b>	WELL @ 5021.00ft (Original Well Elev)
<b>Site Error:</b>	0.00ft	<b>North Reference:</b>	True
<b>Reference Well:</b>	P_DRY CREEK 21-35	<b>Survey Calculation Method:</b>	Minimum Curvature
<b>Well Error:</b>	0.00ft	<b>Output errors are at</b>	2.00 sigma
<b>Reference Wellbore</b>	P_DRY CREEK 21-35	<b>Database:</b>	EDM 2003.21 Single User Db
<b>Reference Design:</b>	PLAN #1 10-28-09 RHS	<b>Offset TVD Reference:</b>	Offset Datum

Offset Design												Offset Site Error:	0.00 ft
WELD_DRY CREEK 6-35 PAD - P_DRY CREEK 4-35 - P_DRY CREEK 4-35 - PLAN #1 10-28-09 RHS												Offset Well Error:	0.00 ft
Survey Program: 0-MWD													
Reference		Offset		Semi Major Axis			Distance						
Measured Depth (ft)	Vertical Depth (ft)	Measured Depth (ft)	Vertical Depth (ft)	Reference (ft)	Offset (ft)	Highside Toolface (°)	Offset Wellbore Centre +N/-S (ft)	+E/-W (ft)	Between Centres (ft)	Between Ellipses (ft)	Minimum Separation (ft)	Separation Factor	Warning
5,000.00	4,930.17	4,620.59	4,291.95	16.93	32.93	-94.08	1,117.22	-1,149.99	1,681.85	1,647.40	34.45	48.824	
5,100.00	5,028.10	4,712.15	4,375.15	17.36	33.71	-94.19	1,144.40	-1,176.86	1,721.95	1,686.65	35.31	48.774	
5,200.00	5,126.02	4,803.71	4,458.36	17.79	34.50	-94.29	1,171.57	-1,203.73	1,762.06	1,725.90	36.16	48.725	
5,300.00	5,223.94	4,895.27	4,541.56	18.22	35.28	-94.38	1,198.75	-1,230.60	1,802.18	1,765.16	37.02	48.678	
5,400.00	5,321.86	4,986.83	4,624.77	18.65	36.06	-94.47	1,225.92	-1,257.48	1,842.30	1,804.42	37.88	48.633	
5,500.00	5,419.78	5,078.39	4,707.97	19.08	36.85	-94.56	1,253.09	-1,284.35	1,882.42	1,843.68	38.74	48.589	
5,600.00	5,517.71	5,169.95	4,791.17	19.51	37.63	-94.64	1,280.27	-1,311.22	1,922.55	1,882.95	39.60	48.547	
5,700.00	5,615.63	5,262.22	4,875.85	19.94	38.41	-94.73	1,307.44	-1,338.07	1,961.15	1,920.29	40.46	48.505	
5,808.65	5,722.02	5,364.15	4,960.15	20.41	39.19	-94.82	1,334.61	-1,368.70	1,999.32	1,952.91	41.31	48.463	
5,900.00	5,811.75	5,458.46	5,045.66	20.75	40.41	-94.90	1,361.78	-1,399.33	2,036.83	1,973.05	42.16	48.421	
6,000.00	5,910.55	5,557.22	5,131.35	21.08	41.63	-95.00	1,388.95	-1,429.96	2,073.96	1,993.18	43.01	48.379	
6,100.00	6,009.33	5,656.00	5,217.04	21.41	42.85	-95.09	1,416.12	-1,460.59	2,111.09	1,993.32	43.86	48.337	
6,200.00	6,109.46	5,755.13	5,302.73	21.75	44.07	-95.18	1,443.29	-1,491.22	2,148.22	1,993.46	44.71	48.295	
6,300.00	6,209.33	5,854.26	5,388.42	22.08	45.29	-95.27	1,470.46	-1,521.85	2,185.35	1,993.60	45.56	48.253	
6,393.69	6,303.00	5,953.39	5,474.11	22.41	46.51	-95.36	1,497.63	-1,552.48	2,222.48	1,993.74	46.41	48.211	
6,400.00	6,309.31	5,959.70	5,480.42	22.41	46.51	-95.36	1,497.63	-1,552.48	2,222.48	1,993.74	46.41	48.211	
6,500.00	6,409.31	6,058.83	5,566.11	22.75	47.73	-95.45	1,524.80	-1,583.11	2,259.61	1,993.88	47.26	48.169	
6,600.00	6,509.31	6,157.96	5,651.80	23.08	48.95	-95.54	1,551.97	-1,613.74	2,296.74	1,994.02	48.11	48.127	
6,700.00	6,609.31	6,257.09	5,737.49	23.41	50.17	-95.63	1,579.14	-1,644.37	2,333.87	1,994.16	48.96	48.085	
6,800.00	6,709.31	6,356.22	5,823.18	23.75	51.39	-95.72	1,606.31	-1,675.00	2,371.00	1,994.30	49.81	48.043	
6,900.00	6,809.31	6,455.35	5,908.87	24.08	52.61	-95.81	1,633.48	-1,705.63	2,408.13	1,994.44	50.66	48.001	
7,000.00	6,909.31	6,554.48	5,994.56	24.41	53.83	-95.90	1,660.65	-1,736.26	2,445.26	1,994.58	51.51	47.959	
7,100.00	7,009.31	6,653.61	6,080.25	24.75	55.05	-95.99	1,687.82	-1,766.89	2,482.39	1,994.72	52.36	47.917	
7,200.00	7,109.31	6,752.74	6,165.94	25.08	56.27	-96.08	1,714.99	-1,797.52	2,519.52	1,994.86	53.21	47.875	
7,300.00	7,209.31	6,851.87	6,251.63	25.41	57.49	-96.17	1,742.16	-1,828.15	2,556.65	1,995.00	54.06	47.833	
7,400.00	7,309.31	6,950.99	6,337.32	25.75	58.71	-96.26	1,769.33	-1,858.78	2,593.78	1,995.14	54.91	47.791	
7,500.00	7,409.31	7,050.12	6,423.01	26.08	59.93	-96.35	1,796.50	-1,889.41	2,630.91	1,995.28	55.76	47.749	
7,600.00	7,509.31	7,149.25	6,508.70	26.41	61.15	-96.44	1,823.67	-1,920.04	2,668.04	1,995.42	56.61	47.707	
7,700.00	7,609.31	7,248.38	6,594.39	26.75	62.37	-96.53	1,850.84	-1,950.67	2,705.17	1,995.56	57.46	47.665	
7,800.00	7,709.31	7,347.51	6,680.08	27.08	63.59	-96.62	1,878.01	-1,981.30	2,742.30	1,995.70	58.31	47.623	
7,900.00	7,809.31	7,446.64	6,765.77	27.41	64.81	-96.71	1,905.18	-2,011.93	2,779.43	1,995.84	59.16	47.581	
7,960.39	7,869.70	7,495.77	6,814.46	27.41	64.81	-96.71	1,905.18	-2,011.93	2,779.43	1,995.84	59.16	47.581	
8,000.00	7,909.31	7,545.40	6,850.15	27.75	66.03	-96.80	1,932.35	-2,042.56	2,816.56	1,995.98	60.01	47.539	
8,100.00	8,009.31	7,644.53	6,935.84	28.08	67.25	-96.89	1,959.52	-2,073.19	2,853.69	1,996.12	60.86	47.497	
8,200.00	8,109.31	7,743.66	7,021.53	28.41	68.47	-96.98	1,986.69	-2,103.82	2,890.82	1,996.26	61.71	47.455	
8,300.00	8,209.31	7,842.79	7,107.22	28.75	69.69	-97.07	2,013.86	-2,134.45	2,927.95	1,996.40	62.56	47.413	
8,365.69	8,275.00	7,891.42	7,155.91	28.75	69.69	-97.07	2,013.86	-2,134.45	2,927.95	1,996.40	62.56	47.413	



<b>Company:</b>	US ROCKIES REGION PLANNING	<b>Local Co-ordinate Reference:</b>	Well P_DRY CREEK 21-35
<b>Project:</b>	COLORADO NOTHERN ZONE - 83	<b>TVD Reference:</b>	WELL @ 5021.00ft (Original Well Elev)
<b>Reference Site:</b>	WELD_DRY CREEK 6-35 PAD	<b>MD Reference:</b>	WELL @ 5021.00ft (Original Well Elev)
<b>Site Error:</b>	0.00ft	<b>North Reference:</b>	True
<b>Reference Well:</b>	P_DRY CREEK 21-35	<b>Survey Calculation Method:</b>	Minimum Curvature
<b>Well Error:</b>	0.00ft	<b>Output errors are at</b>	2.00 sigma
<b>Reference Wellbore</b>	P_DRY CREEK 21-35	<b>Database:</b>	EDM 2003.21 Single User Db
<b>Reference Design:</b>	PLAN #1 10-28-09 RHS	<b>Offset TVD Reference:</b>	Offset Datum

Offset Design WELD_DRY CREEK 6-35 PAD - P_DRY CREEK 5-35 - P_DRY CREEK 5-35 - PLAN #1 10-28-09 RHS													Offset Site Error: 0.00 ft
Survey Program: 0-MWD													Offset Well Error: 0.00 ft
Measured Depth (ft)	Vertical Depth (ft)	Measured Depth (ft)	Vertical Depth (ft)	Reference (ft)	Offset (ft)	Highside Toolface (°)	Offset Wellbore Centre +N/-S (ft)	+E/-W (ft)	Between Centres (ft)	Between Ellipses (ft)	Minimum Separation (ft)	Separation Factor	Warning
0.00	0.00	0.00	0.00	0.00	0.00	-112.12	-18.21	-44.82	48.38				
100.00	100.00	100.00	100.00	0.10	0.10	-112.12	-18.21	-44.82	48.38	48.19	0.19	253.222	
200.00	200.00	200.00	200.00	0.32	0.32	-112.12	-18.21	-44.82	48.38	47.74	0.64	75.522 CC, ES	
300.00	300.00	298.50	298.48	0.55	0.53	-111.18	-18.02	-46.50	49.89	48.81	1.08	46.299	
400.00	400.00	396.77	396.62	0.77	0.75	-108.68	-17.42	-51.53	54.50	52.98	1.52	35.892	
500.00	500.00	494.58	494.07	0.99	1.00	-105.36	-16.44	-59.85	62.35	60.37	1.97	31.576	
600.00	600.00	591.71	590.49	1.22	1.28	-101.93	-15.08	-71.37	73.57	71.12	2.45	30.077 SF	
700.00	700.00	687.94	685.58	1.44	1.60	-98.83	-13.35	-85.99	88.20	85.27	2.93	30.078	
800.00	800.00	783.07	779.05	1.67	1.96	-96.22	-11.28	-103.54	106.24	102.81	3.43	30.938	
900.00	900.00	876.91	870.63	1.89	2.37	-94.10	-8.88	-123.87	127.61	123.66	3.95	32.304	
1,000.00	1,000.00	969.30	960.09	2.12	2.82	-92.41	-6.18	-146.78	152.24	147.76	4.48	33.967	
1,100.00	1,100.00	1,060.07	1,047.21	2.34	3.32	-91.06	-3.19	-172.08	180.02	174.99	5.03	35.800	
1,200.00	1,200.00	1,149.10	1,131.84	2.57	3.87	-89.99	0.05	-199.53	210.85	205.26	5.59	37.724	
1,250.00	1,250.00	1,192.93	1,173.17	2.68	4.15	-89.53	1.75	-214.00	227.38	221.51	5.87	38.723	
1,300.00	1,300.00	1,236.22	1,213.77	2.79	4.45	-116.48	3.51	-228.91	244.82	239.18	5.64	43.396	
1,400.00	1,399.93	1,320.93	1,292.55	3.01	5.07	-115.66	7.17	-259.84	282.86	276.76	6.10	46.389	
1,500.00	1,499.68	1,405.27	1,370.06	3.24	5.73	-115.28	11.06	-292.84	324.87	318.31	6.56	49.533	
1,600.00	1,599.13	1,494.87	1,452.14	3.47	6.46	-115.30	15.27	-328.53	368.99	361.94	7.04	52.379	
1,700.00	1,698.15	1,583.59	1,533.41	3.72	7.19	-115.57	19.44	-363.87	414.54	407.00	7.54	54.974	
1,800.00	1,796.63	1,671.31	1,613.76	4.00	7.91	-116.00	23.57	-398.82	461.60	453.55	8.05	57.326	
1,835.04	1,830.98	1,701.80	1,641.69	4.10	8.16	-116.17	25.00	-410.96	478.46	470.23	8.24	58.094	
1,900.00	1,894.59	1,758.18	1,693.34	4.30	8.63	-117.09	27.65	-433.42	509.95	501.34	8.61	59.240	
2,000.00	1,992.51	1,844.98	1,772.85	4.63	9.36	-118.31	31.73	-468.00	558.60	549.40	9.20	60.711	
2,100.00	2,090.44	1,931.78	1,852.36	4.98	10.08	-119.33	35.82	-502.58	607.41	597.59	9.81	61.897	
2,200.00	2,188.36	2,018.58	1,931.87	5.34	10.81	-120.20	39.90	-537.16	656.34	645.90	10.44	62.860	
2,300.00	2,286.28	2,105.38	2,011.38	5.70	11.54	-120.96	43.98	-571.74	705.38	694.30	11.08	63.651	
2,400.00	2,384.20	2,192.18	2,090.89	6.08	12.27	-121.61	48.06	-606.32	754.50	742.77	11.73	64.306	
2,500.00	2,482.12	2,278.98	2,170.40	6.47	13.00	-122.19	52.14	-640.89	803.68	791.29	12.39	64.852	
2,600.00	2,580.05	2,365.78	2,249.91	6.86	13.73	-122.70	56.22	-675.47	852.92	839.86	13.06	65.313	
2,700.00	2,677.97	2,452.58	2,329.42	7.26	14.46	-123.15	60.30	-710.05	902.21	888.48	13.73	65.704	
2,800.00	2,775.89	2,539.38	2,408.93	7.66	15.19	-123.56	64.38	-744.63	951.53	937.12	14.41	66.038	
2,900.00	2,873.81	2,626.18	2,488.44	8.06	15.93	-123.92	68.47	-779.21	1,000.89	985.80	15.09	66.327	
3,000.00	2,971.73	2,712.98	2,567.95	8.47	16.66	-124.26	72.55	-813.79	1,050.27	1,034.50	15.78	66.577	
3,100.00	3,069.66	2,799.78	2,647.46	8.88	17.39	-124.56	76.63	-848.36	1,099.68	1,083.22	16.46	66.794	
3,200.00	3,167.58	2,886.58	2,726.97	9.29	18.13	-124.84	80.71	-882.94	1,149.11	1,131.96	17.15	66.985	
3,300.00	3,265.50	2,973.38	2,806.49	9.71	18.86	-125.09	84.79	-917.52	1,198.56	1,180.71	17.85	67.154	
3,400.00	3,363.42	3,060.18	2,886.00	10.13	19.60	-125.33	88.87	-952.10	1,248.03	1,229.48	18.54	67.303	
3,500.00	3,461.34	3,146.98	2,965.51	10.54	20.33	-125.54	92.95	-986.68	1,297.51	1,278.27	19.24	67.435	
3,600.00	3,559.27	3,233.78	3,045.02	10.96	21.07	-125.74	97.03	-1,021.26	1,347.00	1,327.06	19.94	67.554	
3,700.00	3,657.19	3,320.58	3,124.53	11.38	21.80	-125.93	101.12	-1,055.83	1,396.51	1,375.87	20.64	67.660	
3,800.00	3,755.11	3,407.38	3,204.04	11.81	22.54	-126.10	105.20	-1,090.41	1,446.02	1,424.68	21.34	67.755	
3,900.00	3,853.03	3,494.18	3,283.55	12.23	23.27	-126.26	109.28	-1,124.99	1,495.55	1,473.50	22.04	67.842	
4,000.00	3,950.95	3,580.98	3,363.06	12.65	24.01	-126.42	113.36	-1,159.57	1,545.08	1,522.33	22.75	67.920	
4,100.00	4,048.88	3,667.78	3,442.57	13.08	24.74	-126.56	117.44	-1,194.15	1,594.62	1,571.17	23.45	67.991	
4,200.00	4,146.80	3,754.58	3,522.08	13.50	25.48	-126.69	121.52	-1,228.73	1,644.17	1,620.01	24.16	68.056	
4,300.00	4,244.72	3,841.85	3,602.43	13.93	26.35	-126.85	126.54	-1,271.25	1,693.62	1,668.69	24.94	67.919	
4,400.00	4,342.64	4,067.21	3,812.29	14.36	27.61	-127.23	135.11	-1,343.87	1,739.17	1,713.17	26.00	66.885	
4,500.00	4,440.56	4,285.88	4,021.77	14.78	28.68	-127.78	142.44	-1,405.98	1,778.40	1,751.35	27.06	65.729	
4,600.00	4,538.49	4,516.41	4,247.08	15.21	29.53	-128.50	148.12	-1,454.08	1,810.78	1,782.70	28.08	64.494	
4,700.00	4,636.41	4,756.58	4,485.18	15.64	30.11	-129.40	151.76	-1,484.89	1,835.83	1,806.79	29.04	63.225	
4,800.00	4,734.33	5,003.48	4,731.75	16.07	30.41	-130.49	153.05	-1,495.81	1,853.20	1,823.29	29.92	61.943	
4,900.00	4,832.25	5,103.98	4,832.25	16.50	30.48	-130.97	153.05	-1,495.82	1,866.60	1,836.12	30.48	61.248	

CC - Min centre to center distance or convergent point, SF - min separation factor, ES - min ellipse separation

<b>Company:</b>	US ROCKIES REGION PLANNING	<b>Local Co-ordinate Reference:</b>	Well P_DRY CREEK 21-35
<b>Project:</b>	COLORADO NOTHERN ZONE - 83	<b>TVD Reference:</b>	WELL @ 5021.00ft (Original Well Elev)
<b>Reference Site:</b>	WELD_DRY CREEK 6-35 PAD	<b>MD Reference:</b>	WELL @ 5021.00ft (Original Well Elev)
<b>Site Error:</b>	0.00ft	<b>North Reference:</b>	True
<b>Reference Well:</b>	P_DRY CREEK 21-35	<b>Survey Calculation Method:</b>	Minimum Curvature
<b>Well Error:</b>	0.00ft	<b>Output errors are at</b>	2.00 sigma
<b>Reference Wellbore</b>	P_DRY CREEK 21-35	<b>Database:</b>	EDM 2003.21 Single User Db
<b>Reference Design:</b>	PLAN #1 10-28-09 RHS	<b>Offset TVD Reference:</b>	Offset Datum

Offset Design												Offset Site Error:	0.00 ft
WELD_DRY CREEK 6-35 PAD - P_DRY CREEK 5-35 - P_DRY CREEK 5-35 - PLAN #1 10-28-09 RHS												Offset Well Error:	0.00 ft
Survey Program: 0-MWD													
Reference		Offset		Semi Major Axis			Distance						
Measured Depth (ft)	Vertical Depth (ft)	Measured Depth (ft)	Vertical Depth (ft)	Reference (ft)	Offset (ft)	Highside Toolface (°)	Offset Wellbore Centre +N/-S (ft)	+E/-W (ft)	Between Centres (ft)	Between Ellipses (ft)	Minimum Separation (ft)	Separation Factor	Warning
5,000.00	4,930.17	5,201.90	4,930.17	16.93	30.56	-131.44	153.05	-1,495.82	1,880.12	1,849.09	31.03	60.591	
5,100.00	5,028.10	5,299.83	5,028.10	17.36	30.63	-131.89	153.05	-1,495.82	1,893.76	1,862.17	31.58	59.963	
5,200.00	5,126.02	5,397.75	5,126.02	17.79	30.71	-132.34	153.05	-1,495.82	1,907.51	1,875.38	32.13	59.362	
5,300.00	5,223.94	5,495.67	5,223.94	18.22	30.78	-132.78	153.05	-1,495.82	1,921.39	1,888.70	32.68	58.788	
5,400.00	5,321.86	5,593.59	5,321.86	18.65	30.86	-133.22	153.05	-1,495.82	1,935.37	1,902.14	33.23	58.239	
5,500.00	5,419.78	5,691.51	5,419.78	19.08	30.94	-133.65	153.05	-1,495.82	1,949.47	1,915.69	33.78	57.714	
5,600.00	5,517.71	5,789.44	5,517.71	19.51	31.03	-134.07	153.05	-1,495.82	1,963.67	1,929.35	34.32	57.212	
5,700.00	5,615.63	5,887.36	5,615.63	19.94	31.11	-134.49	153.05	-1,495.82	1,977.98	1,943.12	34.87	56.731	
5,808.65	5,722.02	5,993.75	5,722.02	20.41	31.20	-134.93	153.05	-1,495.82	1,993.65	1,958.19	35.45	56.231	
5,900.00	5,811.75	6,083.48	5,811.75	20.75	31.28	-135.45	153.05	-1,495.82	2,005.89	1,969.78	36.10	55.558	
6,000.00	5,910.55	6,182.28	5,910.55	21.03	31.37	-135.91	153.05	-1,495.82	2,016.99	1,980.27	36.72	54.926	
6,100.00	6,009.83	6,281.56	6,009.83	21.28	31.46	-136.27	153.05	-1,495.82	2,025.64	1,988.37	37.27	54.345	
6,200.00	6,109.46	6,381.19	6,109.46	21.50	31.55	-136.52	153.05	-1,495.82	2,031.80	1,994.04	37.76	53.809	
6,300.00	6,209.33	6,481.06	6,209.33	21.67	31.64	-136.66	153.05	-1,495.82	2,035.45	1,997.27	38.18	53.315	
6,393.69	6,303.00	6,574.73	6,303.00	21.79	31.73	-109.11	153.05	-1,495.82	2,036.56	1,998.05	38.51	52.885	
6,400.00	6,309.31	6,581.04	6,309.31	21.80	31.74	-109.11	153.05	-1,495.82	2,036.56	1,998.03	38.53	52.860	
6,500.00	6,409.31	6,681.04	6,409.31	21.94	31.83	-109.11	153.05	-1,495.82	2,036.56	1,997.73	38.83	52.450	
6,600.00	6,509.31	6,781.04	6,509.31	22.08	31.93	-109.11	153.05	-1,495.82	2,036.56	1,997.43	39.13	52.043	
6,700.00	6,609.31	6,881.04	6,609.31	22.22	32.03	-109.11	153.05	-1,495.82	2,036.56	1,997.12	39.44	51.639	
6,800.00	6,709.31	6,981.04	6,709.31	22.36	32.12	-109.11	153.05	-1,495.82	2,036.56	1,996.81	39.75	51.237	
6,900.00	6,809.31	7,081.04	6,809.31	22.50	32.23	-109.11	153.05	-1,495.82	2,036.56	1,996.50	40.06	50.838	
7,000.00	6,909.31	7,181.04	6,909.31	22.64	32.33	-109.11	153.05	-1,495.82	2,036.56	1,996.19	40.37	50.443	
7,100.00	7,009.31	7,281.04	7,009.31	22.79	32.43	-109.11	153.05	-1,495.82	2,036.56	1,995.87	40.69	50.050	
7,200.00	7,109.31	7,381.04	7,109.31	22.94	32.54	-109.11	153.05	-1,495.82	2,036.56	1,995.55	41.01	49.660	
7,300.00	7,209.31	7,481.04	7,209.31	23.08	32.64	-109.11	153.05	-1,495.82	2,036.56	1,995.23	41.33	49.273	
7,400.00	7,309.31	7,581.04	7,309.31	23.23	32.75	-109.11	153.05	-1,495.82	2,036.56	1,994.90	41.66	48.890	
7,500.00	7,409.31	7,681.04	7,409.31	23.38	32.86	-109.11	153.05	-1,495.82	2,036.56	1,994.58	41.98	48.510	
7,600.00	7,509.31	7,781.04	7,509.31	23.53	32.96	-109.11	153.05	-1,495.82	2,036.56	1,994.25	42.31	48.133	
7,700.00	7,609.31	7,881.04	7,609.31	23.69	33.07	-109.11	153.05	-1,495.82	2,036.56	1,993.92	42.64	47.760	
7,800.00	7,709.31	7,981.04	7,709.31	23.84	33.19	-109.11	153.05	-1,495.82	2,036.56	1,993.59	42.97	47.390	
7,900.00	7,809.31	8,081.04	7,809.31	23.99	33.30	-109.11	153.05	-1,495.82	2,036.56	1,993.25	43.31	47.023	
8,000.00	7,909.31	8,181.04	7,909.31	24.15	33.41	-109.11	153.05	-1,495.82	2,036.56	1,992.91	43.65	46.660	
8,100.00	8,009.31	8,281.04	8,009.31	24.31	33.53	-109.11	153.05	-1,495.82	2,036.56	1,992.57	43.99	46.300	
8,200.00	8,109.31	8,381.04	8,109.31	24.47	33.64	-109.11	153.05	-1,495.82	2,036.56	1,992.23	44.33	45.944	
8,300.00	8,209.31	8,481.04	8,209.31	24.62	33.76	-109.11	153.05	-1,495.82	2,036.56	1,991.89	44.67	45.591	
8,365.69	8,275.00	8,546.73	8,275.00	24.73	33.84	-109.11	153.05	-1,495.82	2,036.56	1,991.66	44.90	45.361	

<b>Company:</b>	US ROCKIES REGION PLANNING	<b>Local Co-ordinate Reference:</b>	Well P_DRY CREEK 21-35
<b>Project:</b>	COLORADO NORTHERN ZONE - 83	<b>TVD Reference:</b>	WELL @ 5021.00ft (Original Well Elev)
<b>Reference Site:</b>	WELD_DRY CREEK 6-35 PAD	<b>MD Reference:</b>	WELL @ 5021.00ft (Original Well Elev)
<b>Site Error:</b>	0.00ft	<b>North Reference:</b>	True
<b>Reference Well:</b>	P_DRY CREEK 21-35	<b>Survey Calculation Method:</b>	Minimum Curvature
<b>Well Error:</b>	0.00ft	<b>Output errors are at</b>	2.00 sigma
<b>Reference Wellbore</b>	P_DRY CREEK 21-35	<b>Database:</b>	EDM 2003.21 Single User Db
<b>Reference Design:</b>	PLAN #1 10-28-09 RHS	<b>Offset TVD Reference:</b>	Offset Datum

Offset Design WELD_DRY CREEK 6-35 PAD - RULE #6-35A EXISTING - RULE #6-35A EXISTING - RULE #6-35A E												Offset Site Error:	0.00 ft
Survey Program: 0-UNKNOWN												Offset Well Error:	0.00 ft
Reference	Offset	Semi Major Axis		Distance									
Measured Depth (ft)	Vertical Depth (ft)	Measured Depth (ft)	Vertical Depth (ft)	Reference (ft)	Offset (ft)	Highside Toolface (°)	Offset Wellbore Centre +N/-S (ft)	+E/-W (ft)	Between Centres (ft)	Between Ellipses (ft)	Minimum Separation (ft)	Separation Factor	Warning
0.00	0.00	0.00	0.00	0.00	0.00	-175.62	-76.87	-5.88	77.88				
100.00	100.00	89.00	89.00	0.10	1.78	-175.62	-76.87	-5.88	77.10	75.22	1.88	41.105	
200.00	200.00	189.00	189.00	0.32	5.56	-175.62	-76.87	-5.88	77.10	71.21	5.88	13.111	
300.00	300.00	289.00	289.00	0.55	9.56	-175.62	-76.87	-5.88	77.10	66.99	10.11	7.629	
400.00	400.00	389.00	389.00	0.77	13.56	-175.62	-76.87	-5.88	77.10	62.77	14.33	5.380	
500.00	500.00	489.00	489.00	0.99	17.56	-175.62	-76.87	-5.88	77.10	58.54	18.55	4.155	
600.00	600.00	589.00	589.00	1.22	21.56	-175.62	-76.87	-5.88	77.10	54.32	22.78	3.384	
700.00	700.00	689.00	689.00	1.44	25.56	-175.62	-76.87	-5.88	77.10	50.09	27.00	2.855	
800.00	800.00	789.00	789.00	1.67	29.56	-175.62	-76.87	-5.88	77.10	45.87	31.23	2.469	
900.00	900.00	889.00	889.00	1.89	33.56	-175.62	-76.87	-5.88	77.10	41.64	35.45	2.175	
1,000.00	1,000.00	989.00	989.00	2.12	37.56	-175.62	-76.87	-5.88	77.10	37.42	39.68	1.943	
1,100.00	1,100.00	1,089.00	1,089.00	2.34	41.56	-175.62	-76.87	-5.88	77.10	33.19	43.90	1.756	
1,200.00	1,200.00	1,189.00	1,189.00	2.57	45.56	-175.62	-76.87	-5.88	77.10	28.97	48.13	1.602	
1,250.00	1,250.00	1,239.00	1,239.00	2.68	47.56	-175.62	-76.87	-5.88	77.10	26.85	50.24	1.535 CC	
1,300.00	1,300.00	1,289.00	1,289.00	2.79	49.56	-156.90	-76.87	-5.88	77.50	25.15	52.35	1.480 Level 3	
1,400.00	1,399.93	1,388.93	1,388.93	3.01	53.56	157.84	-76.87	-5.88	80.72	24.20	56.52	1.428 Level 3, ES, SF	
1,500.00	1,499.68	1,488.68	1,488.68	3.24	57.55	159.53	-76.87	-5.88	87.22	26.61	60.60	1.439 Level 3	
1,600.00	1,599.13	1,588.13	1,588.13	3.47	61.53	161.62	-76.87	-5.88	97.08	32.49	64.59	1.503	
1,700.00	1,698.15	1,687.15	1,687.15	3.72	65.49	163.82	-76.87	-5.88	110.39	41.94	68.45	1.613	
1,800.00	1,796.63	1,785.63	1,785.63	4.00	69.43	165.92	-76.87	-5.88	127.17	55.01	72.16	1.762	
1,835.04	1,830.98	1,819.98	1,819.98	4.10	70.80	166.60	-76.87	-5.88	133.88	60.45	73.43	1.823	
1,900.00	1,894.59	1,883.59	1,883.59	4.30	73.34	167.79	-76.87	-5.88	146.74	70.67	76.06	1.929	
2,000.00	1,992.51	1,981.51	1,981.51	4.63	77.26	169.27	-76.87	-5.88	166.63	86.50	80.13	2.080	
2,100.00	2,090.44	2,079.44	2,079.44	4.98	81.18	170.43	-76.87	-5.88	186.60	102.41	84.20	2.216	
2,200.00	2,188.36	2,177.36	2,177.36	5.34	85.09	171.36	-76.87	-5.88	206.64	118.37	88.27	2.341	
2,300.00	2,286.28	2,275.28	2,275.28	5.70	89.01	172.13	-76.87	-5.88	226.72	134.37	92.35	2.455	
2,400.00	2,384.20	2,373.20	2,373.20	6.08	92.93	172.78	-76.87	-5.88	246.83	150.40	96.43	2.560	
2,500.00	2,482.12	2,471.12	2,471.12	6.47	96.84	173.32	-76.87	-5.88	266.97	166.46	100.51	2.656	
2,600.00	2,580.05	2,569.05	2,569.05	6.86	100.76	173.79	-76.87	-5.88	287.13	182.53	104.60	2.745	
2,700.00	2,677.97	2,666.97	2,666.97	7.26	104.68	174.20	-76.87	-5.88	307.30	198.61	108.68	2.827	
2,800.00	2,775.89	2,764.89	2,764.89	7.66	108.60	174.56	-76.87	-5.88	327.49	214.71	112.77	2.904	
2,900.00	2,873.81	2,862.81	2,862.81	8.06	112.51	174.88	-76.87	-5.88	347.68	230.82	116.86	2.975	
3,000.00	2,971.73	2,960.73	2,960.73	8.47	116.43	175.16	-76.87	-5.88	367.89	246.94	120.95	3.042	
3,100.00	3,069.66	3,058.66	3,058.66	8.88	120.35	175.41	-76.87	-5.88	388.10	263.06	125.04	3.104	
3,200.00	3,167.58	3,156.58	3,156.58	9.29	124.26	175.64	-76.87	-5.88	408.33	279.19	129.14	3.162	
3,300.00	3,265.50	3,254.50	3,254.50	9.71	128.18	175.85	-76.87	-5.88	428.55	295.32	133.23	3.217	
3,400.00	3,363.42	3,352.42	3,352.42	10.13	132.10	176.03	-76.87	-5.88	448.78	311.46	137.32	3.268	
3,500.00	3,461.34	3,450.34	3,450.34	10.54	136.01	176.20	-76.87	-5.88	469.02	327.60	141.42	3.317	
3,600.00	3,559.27	3,548.27	3,548.27	10.96	139.93	176.36	-76.87	-5.88	489.26	343.75	145.51	3.362	
3,700.00	3,657.19	3,646.19	3,646.19	11.38	143.85	176.51	-76.87	-5.88	509.50	359.89	149.61	3.406	
3,800.00	3,755.11	3,744.11	3,744.11	11.81	147.76	176.64	-76.87	-5.88	529.75	376.04	153.70	3.447	
3,900.00	3,853.03	3,842.03	3,842.03	12.23	151.68	176.76	-76.87	-5.88	549.99	392.20	157.80	3.485	
4,000.00	3,950.95	3,939.95	3,939.95	12.65	155.60	176.88	-76.87	-5.88	570.24	408.35	161.89	3.522	
4,100.00	4,048.88	4,037.88	4,037.88	13.08	159.52	176.99	-76.87	-5.88	590.50	424.51	165.99	3.557	
4,200.00	4,146.80	4,135.80	4,135.80	13.50	163.43	177.09	-76.87	-5.88	610.75	440.66	170.09	3.591	
4,300.00	4,244.72	4,233.72	4,233.72	13.93	167.35	177.18	-76.87	-5.88	631.01	456.82	174.18	3.623	
4,400.00	4,342.64	4,331.64	4,331.64	14.36	171.27	177.27	-76.87	-5.88	651.26	472.98	178.28	3.653	
4,500.00	4,440.56	4,429.56	4,429.56	14.78	175.18	177.35	-76.87	-5.88	671.52	489.14	182.38	3.682	
4,600.00	4,538.49	4,527.49	4,527.49	15.21	179.10	177.43	-76.87	-5.88	691.78	505.30	186.48	3.710	
4,700.00	4,636.41	4,625.41	4,625.41	15.64	183.02	177.50	-76.87	-5.88	712.04	521.47	190.58	3.736	
4,800.00	4,734.33	4,723.33	4,723.33	16.07	186.93	177.57	-76.87	-5.88	732.30	537.63	194.68	3.762	
4,900.00	4,832.25	4,821.25	4,821.25	16.50	190.85	177.64	-76.87	-5.88	752.57	553.79	198.77	3.786	

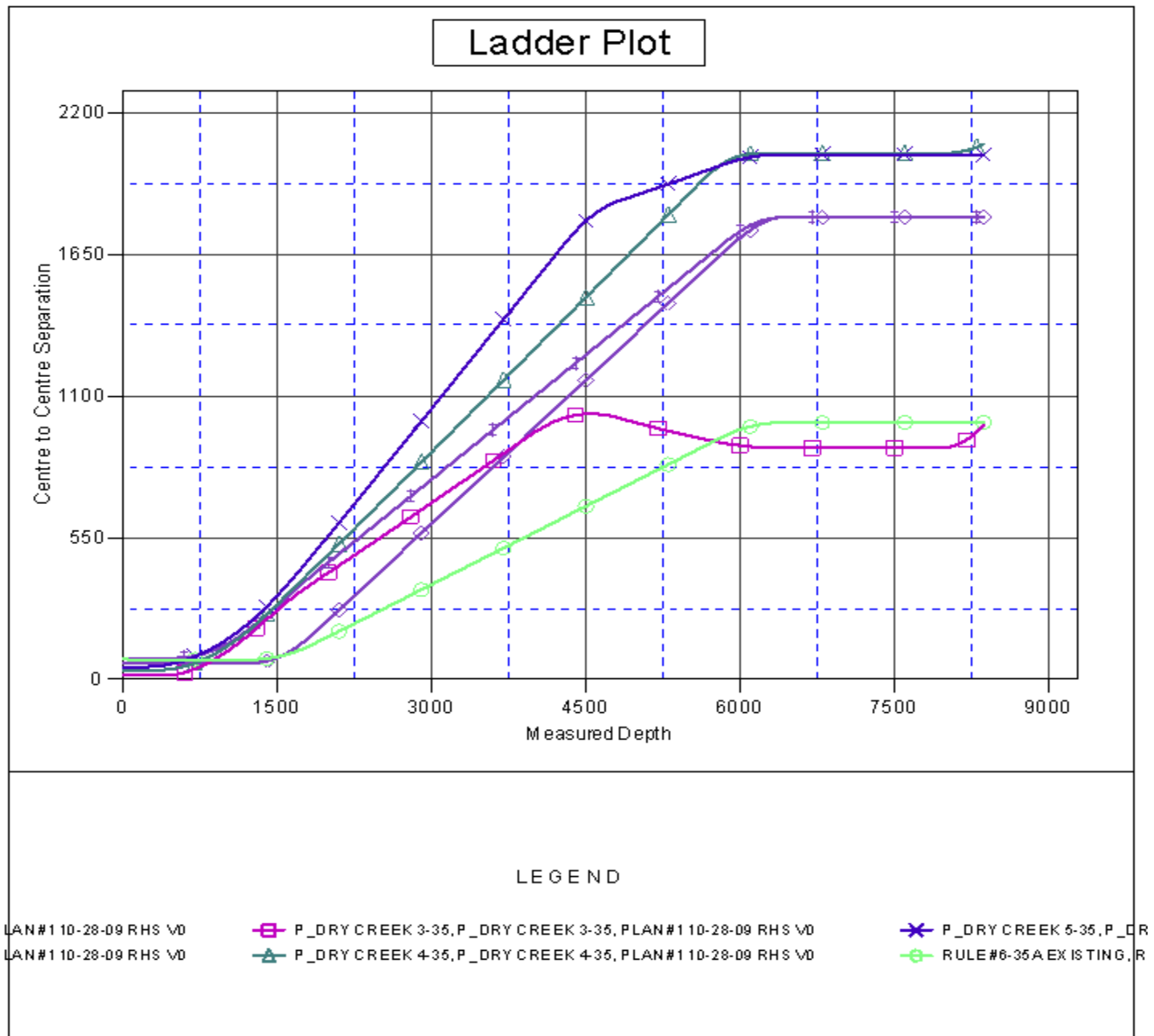
CC - Min centre to center distance or convergent point, SF - min separation factor, ES - min ellipse separation

<b>Company:</b>	US ROCKIES REGION PLANNING	<b>Local Co-ordinate Reference:</b>	Well P_DRY CREEK 21-35
<b>Project:</b>	COLORADO NOTHERN ZONE - 83	<b>TVD Reference:</b>	WELL @ 5021.00ft (Original Well Elev)
<b>Reference Site:</b>	WELD_DRY CREEK 6-35 PAD	<b>MD Reference:</b>	WELL @ 5021.00ft (Original Well Elev)
<b>Site Error:</b>	0.00ft	<b>North Reference:</b>	True
<b>Reference Well:</b>	P_DRY CREEK 21-35	<b>Survey Calculation Method:</b>	Minimum Curvature
<b>Well Error:</b>	0.00ft	<b>Output errors are at</b>	2.00 sigma
<b>Reference Wellbore</b>	P_DRY CREEK 21-35	<b>Database:</b>	EDM 2003.21 Single User Db
<b>Reference Design:</b>	PLAN #1 10-28-09 RHS	<b>Offset TVD Reference:</b>	Offset Datum

Offset Design WELD_DRY CREEK 6-35 PAD - RULE #6-35A EXISTING - RULE #6-35A EXISTING - RULE #6-35A E													Offset Site Error:	0.00 ft
Survey Program: 0-UNKNOWN													Offset Well Error:	0.00 ft
Reference	Offset	Semi Major Axis		Distance								Warning		
Measured Depth (ft)	Vertical Depth (ft)	Measured Depth (ft)	Vertical Depth (ft)	Reference (ft)	Offset (ft)	Highside Toolface (°)	Offset Wellbore Centre +N/-S (ft)	+E/-W (ft)	Between Centres (ft)	Between Ellipses (ft)	Minimum Separation (ft)	Separation Factor		
5,000.00	4,930.17	4,919.17	4,919.17	16.93	194.77	177.70	-76.87	-5.88	772.83	569.96	202.87	3.809		
5,100.00	5,028.10	5,017.10	5,017.10	17.36	198.68	177.76	-76.87	-5.88	793.10	586.12	206.97	3.832		
5,200.00	5,126.02	5,115.02	5,115.02	17.79	202.60	177.81	-76.87	-5.88	813.36	602.29	211.07	3.854		
5,300.00	5,223.94	5,212.94	5,212.94	18.22	206.52	177.87	-76.87	-5.88	833.63	618.46	215.17	3.874		
5,400.00	5,321.86	5,310.86	5,310.86	18.65	210.43	177.92	-76.87	-5.88	853.90	634.63	219.27	3.894		
5,500.00	5,419.78	5,408.78	5,408.78	19.08	214.35	177.96	-76.87	-5.88	874.16	650.79	223.37	3.914		
5,600.00	5,517.71	5,506.71	5,506.71	19.51	218.27	178.01	-76.87	-5.88	894.43	666.96	227.47	3.932		
5,700.00	5,615.63	5,604.63	5,604.63	19.94	222.19	178.05	-76.87	-5.88	914.70	683.13	231.57	3.950		
5,808.65	5,722.02	5,711.02	5,711.02	20.41	226.44	178.10	-76.87	-5.88	936.72	700.70	236.02	3.969		
5,900.00	5,811.75	5,800.75	5,800.75	20.75	230.03	178.15	-76.87	-5.88	953.81	712.75	241.06	3.957		
6,000.00	5,910.55	5,899.55	5,899.55	21.03	233.98	178.19	-76.87	-5.88	969.23	722.82	246.41	3.933		
6,100.00	6,009.83	5,998.83	5,998.83	21.28	237.95	178.21	-76.87	-5.88	981.19	729.69	251.50	3.901		
6,200.00	6,109.46	6,098.46	6,098.46	21.50	241.94	178.24	-76.87	-5.88	989.68	733.35	256.33	3.861		
6,300.00	6,209.33	6,198.33	6,198.33	21.67	245.93	178.25	-76.87	-5.88	994.69	733.83	260.86	3.813		
6,393.69	6,303.00	6,292.00	6,292.00	21.79	249.68	-154.15	-76.87	-5.88	996.22	731.40	264.82	3.762		
6,400.00	6,309.31	6,298.31	6,298.31	21.80	249.93	-154.15	-76.87	-5.88	996.22	731.14	265.08	3.758		
6,500.00	6,409.31	6,398.31	6,398.31	21.94	253.93	-154.15	-76.87	-5.88	996.22	726.94	269.28	3.700		
6,600.00	6,509.31	6,498.31	6,498.31	22.08	257.93	-154.15	-76.87	-5.88	996.22	722.74	273.48	3.643		
6,700.00	6,609.31	6,598.31	6,598.31	22.22	261.93	-154.15	-76.87	-5.88	996.22	718.54	277.68	3.588		
6,800.00	6,709.31	6,698.31	6,698.31	22.36	265.93	-154.15	-76.87	-5.88	996.22	714.34	281.89	3.534		
6,900.00	6,809.31	6,798.31	6,798.31	22.50	269.93	-154.15	-76.87	-5.88	996.22	710.14	286.09	3.482		
7,000.00	6,909.31	6,898.31	6,898.31	22.64	273.93	-154.15	-76.87	-5.88	996.22	705.93	290.29	3.432		
7,100.00	7,009.31	6,998.31	6,998.31	22.79	277.93	-154.15	-76.87	-5.88	996.22	701.73	294.49	3.383		
7,200.00	7,109.31	7,098.31	7,098.31	22.94	281.93	-154.15	-76.87	-5.88	996.22	697.53	298.70	3.335		
7,300.00	7,209.31	7,198.31	7,198.31	23.08	285.93	-154.15	-76.87	-5.88	996.22	693.32	302.90	3.289		
7,400.00	7,309.31	7,298.31	7,298.31	23.23	289.93	-154.15	-76.87	-5.88	996.22	689.12	307.11	3.244		
7,500.00	7,409.31	7,398.31	7,398.31	23.38	293.93	-154.15	-76.87	-5.88	996.22	684.91	311.31	3.200		
7,600.00	7,509.31	7,498.31	7,498.31	23.53	297.93	-154.15	-76.87	-5.88	996.22	680.71	315.52	3.157		
7,700.00	7,609.31	7,598.31	7,598.31	23.69	301.93	-154.15	-76.87	-5.88	996.22	676.50	319.72	3.116		
7,800.00	7,709.31	7,698.31	7,698.31	23.84	305.93	-154.15	-76.87	-5.88	996.22	672.29	323.93	3.075		
7,900.00	7,809.31	7,798.31	7,798.31	23.99	309.93	-154.15	-76.87	-5.88	996.22	668.09	328.14	3.036		
8,000.00	7,909.31	7,898.31	7,898.31	24.15	313.93	-154.15	-76.87	-5.88	996.22	663.88	332.34	2.998		
8,100.00	8,009.31	7,998.31	7,998.31	24.31	317.93	-154.15	-76.87	-5.88	996.22	659.67	336.55	2.960		
8,200.00	8,109.31	8,098.31	8,098.31	24.47	321.93	-154.15	-76.87	-5.88	996.22	655.46	340.76	2.924		
8,300.00	8,209.31	8,198.31	8,198.31	24.62	325.93	-154.15	-76.87	-5.88	996.22	651.25	344.97	2.888		
8,365.69	8,275.00	8,264.00	8,264.00	24.73	328.56	-154.15	-76.87	-5.88	996.22	648.49	347.73	2.865		

<b>Company:</b>	US ROCKIES REGION PLANNING	<b>Local Co-ordinate Reference:</b>	Well P_DRY CREEK 21-35
<b>Project:</b>	COLORADO NOTHERN ZONE - 83	<b>TVD Reference:</b>	WELL @ 5021.00ft (Original Well Elev)
<b>Reference Site:</b>	WELD_DRY CREEK 6-35 PAD	<b>MD Reference:</b>	WELL @ 5021.00ft (Original Well Elev)
<b>Site Error:</b>	0.00ft	<b>North Reference:</b>	True
<b>Reference Well:</b>	P_DRY CREEK 21-35	<b>Survey Calculation Method:</b>	Minimum Curvature
<b>Well Error:</b>	0.00ft	<b>Output errors are at</b>	2.00 sigma
<b>Reference Wellbore</b>	P_DRY CREEK 21-35	<b>Database:</b>	EDM 2003.21 Single User Db
<b>Reference Design:</b>	PLAN #1 10-28-09 RHS	<b>Offset TVD Reference:</b>	Offset Datum

Reference Depths are relative to WELL @ 5021.00ft (Original Well Elev) Coordinates are relative to: P\_DRY CREEK 21-35  
Offset Depths are relative to Offset Datum Coordinate System is US State Plane 1983, Colorado Northern Zone  
Central Meridian is 105° 30' 0.000 W ° Grid Convergence at Surface is: 0.41°



<b>Company:</b>	US ROCKIES REGION PLANNING	<b>Local Co-ordinate Reference:</b>	Well P_DRY CREEK 21-35
<b>Project:</b>	COLORADO NOTHERN ZONE - 83	<b>TVD Reference:</b>	WELL @ 5021.00ft (Original Well Elev)
<b>Reference Site:</b>	WELD_DRY CREEK 6-35 PAD	<b>MD Reference:</b>	WELL @ 5021.00ft (Original Well Elev)
<b>Site Error:</b>	0.00ft	<b>North Reference:</b>	True
<b>Reference Well:</b>	P_DRY CREEK 21-35	<b>Survey Calculation Method:</b>	Minimum Curvature
<b>Well Error:</b>	0.00ft	<b>Output errors are at</b>	2.00 sigma
<b>Reference Wellbore</b>	P_DRY CREEK 21-35	<b>Database:</b>	EDM 2003.21 Single User Db
<b>Reference Design:</b>	PLAN #1 10-28-09 RHS	<b>Offset TVD Reference:</b>	Offset Datum

Reference Depths are relative to WELL @ 5021.00ft (Original Well Elev) Coordinates are relative to: P\_DRY CREEK 21-35  
Offset Depths are relative to Offset Datum Coordinate System is US State Plane 1983, Colorado Northern Zone  
Central Meridian is 105° 30' 0.000 W ° Grid Convergence at Surface is: 0.41°

