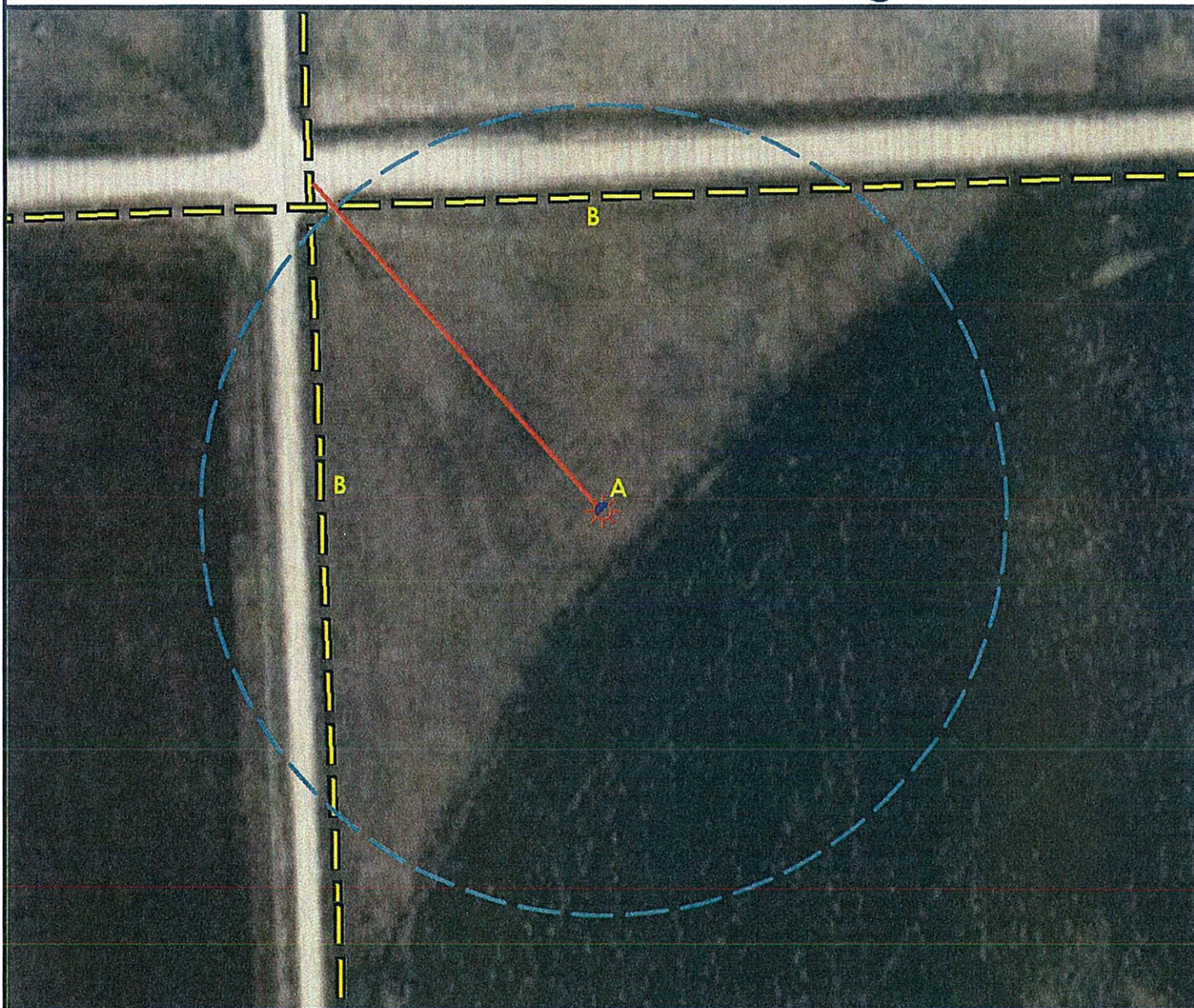
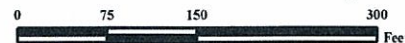


Location Drawing



A. Proposed well CHAPMAN 27-04.

B. Power Lines are 276' W & 309' N.



Legend

- | | |
|----------------------|---------------------|
| Proposed Well | Building/Residence |
| Existing Well | Oil & Gas Equipment |
| Plugged Well | Water Body |
| Pedestal | Utility Box |
| CattleGuard/Gate | Railroad |
| Bridge | Sewer |
| ECD | Fence |
| 400' Radius | Overhead Power Line |
| Facilities Enclosure | Pipeline |
| | Access Road |
| | Ditch/Canal |

Location Drawing 400ft Radius Map Chapman 27-04

Surface Location: T1S R45W S27
Description of surface uses : Irrigated Crop

Field Date: 10/12/2009
Drawing Date: 10/15/2009
Drafter: DMM
Checked By: MPS

Aerial Photo supplied by NAIP - 2005

Prepared for:
ROSETTA RESOURCES
OPERATING LP
717 Texas Avenue, Ste. 2800
Houston, TX 77002



Use our resources to find yours!
www.petro-fs.com

1801 W. 13th Ave Denver, CO 80204 (303) 928-7128	111 E. Third Street Suite 207 Rifle, CO 81650 (970) 625-4740
--	---