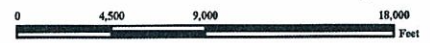
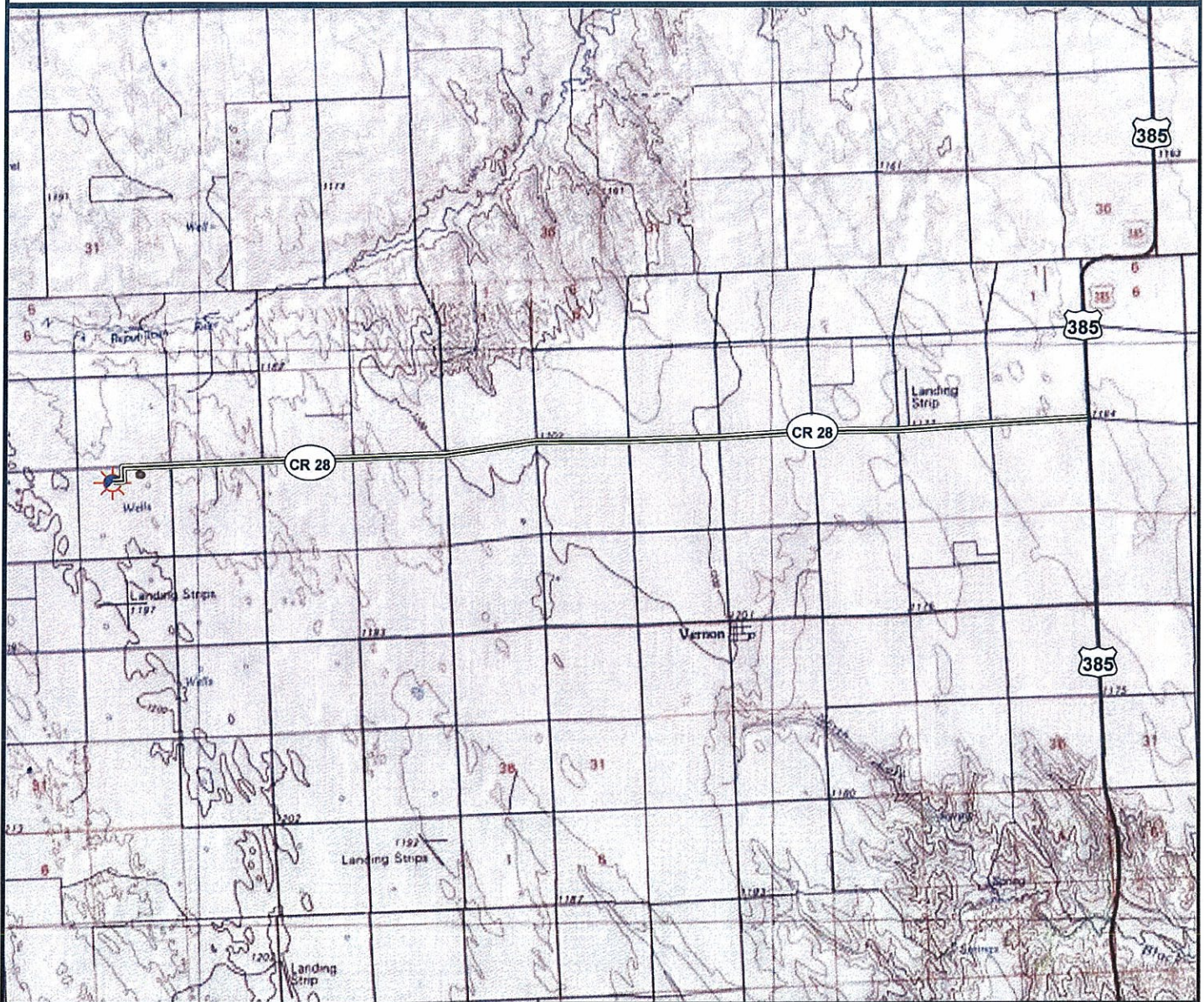


Access Road Map



Legend

- | | |
|----------------------|-----------------------|
| Proposed Well | Building/Residence |
| Existing Well | Oil & Gas Equipment |
| Water Well | Water Body |
| Pedestal | Utility Box |
| CattleGuard/Gate | Railroad |
| Bridge | Fence |
| ECD | Overhead Power Line |
| 1000' Radius | Pipeline |
| Facilities Enclosure | Access Road |
| | Ditch/Canal |
| | Concrete Walled Ditch |

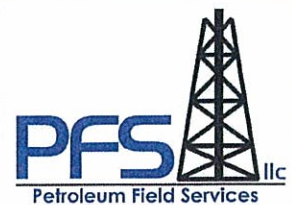
Access Road Map

KERBS L&C 17-03

Surface Location: T1S R45W S17

Field Date: 11/01/2009
 Drawing Date: 11/16/2009
 Drafter: BHF
 Checked By: MPS

Prepared for:
ROSETTA RESOURCES
OPERATING LP



Use our resources to find yours!
www.petro-fs.com

1801 W. 13th Ave Denver, CO 80204 (303) 928-7128
 111 E. Third Street Suite 207 Rifle, CO 81650 (970) 625-4740