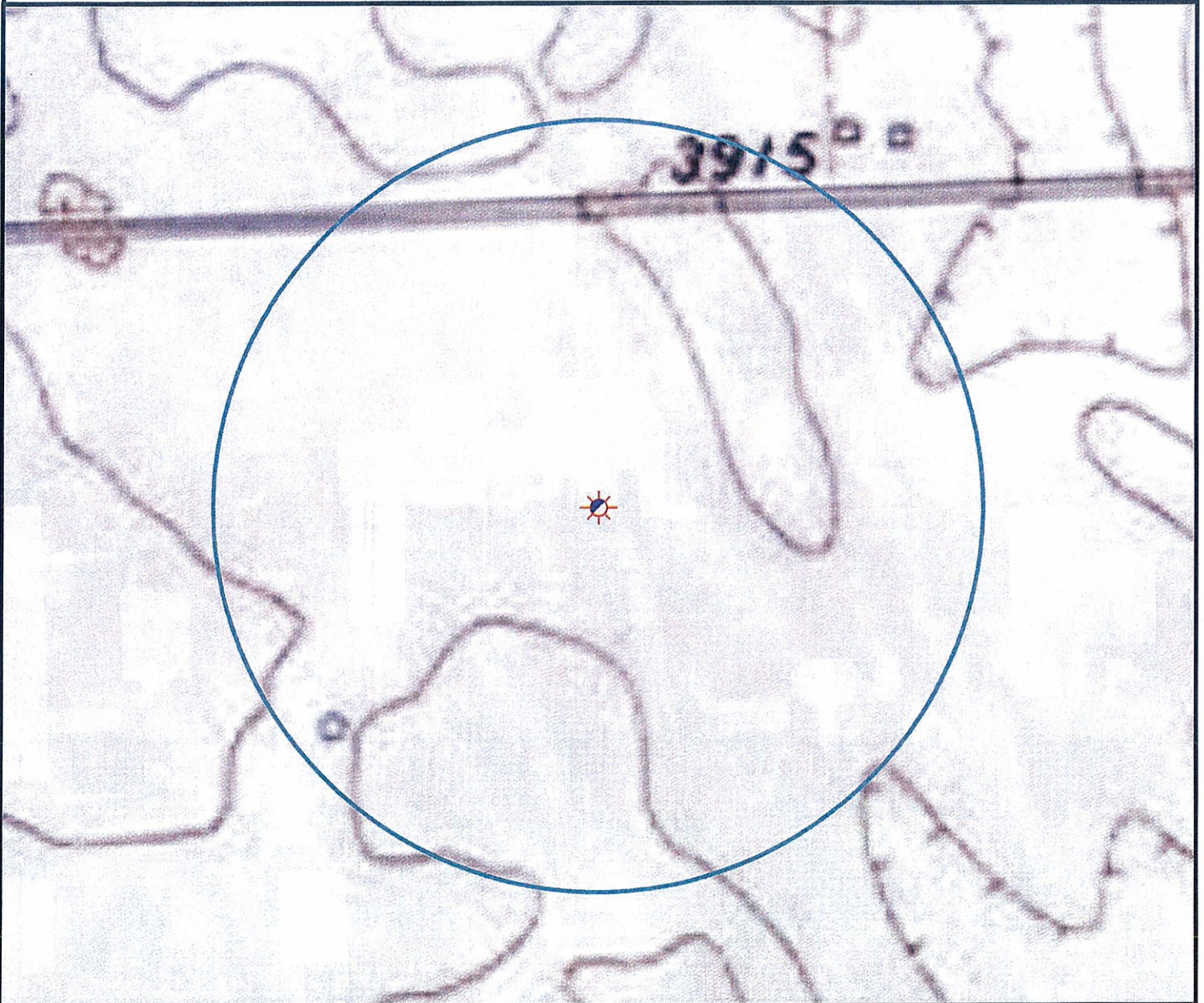
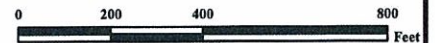


# Hydrology Map



*There are no surface waters within 1000' radius of the oil and gas location.*



## Legend

- |                      |                       |
|----------------------|-----------------------|
| Proposed Well        | Building/Residence    |
| Existing Well        | Oil & Gas Equipment   |
| Water Well           | Water Body            |
| Pedestal             | Utility Box           |
| CattleGuard/Gate     | Railroad              |
| Bridge               | Fence                 |
| ECD                  | Overhead Power Line   |
| 1000' Radius         | Pipeline              |
| Facilities Enclosure | Access Road           |
|                      | Ditch/Canal           |
|                      | Concrete Walled Ditch |

## 1000ft Radius Map of Surface Water and Riparian Areas

### KERBS L&C 17-03

Surface Location: T1S R45W S17

Field Date: 11/01/2009  
 Drawing Date: 11/16/2009  
 Drafter: BHF  
 Checked By: MPS

Prepared for:  
**ROSETTA RESOURCES**  
 OPERATING LP



Use our resources to find yours!  
[www.petro-fs.com](http://www.petro-fs.com)

1801 W. 13th Ave Denver, CO 80204 (303) 928-7128	111 E. Third Street Suite 207 Rifle, CO 81650 (970) 625-4740
--	---