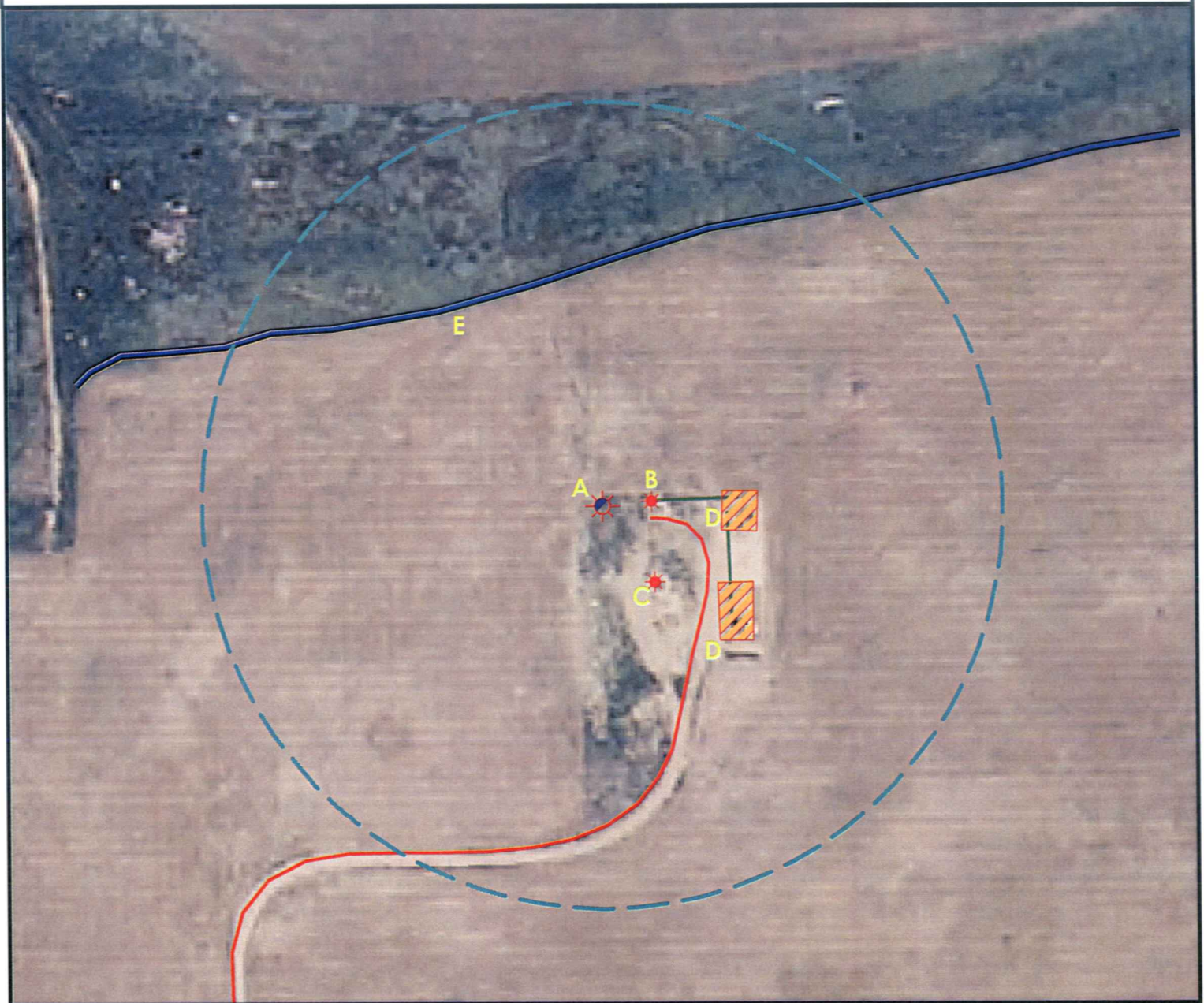


# Location Drawing



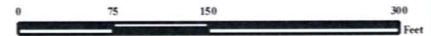
A. Proposed Well TALON POINT 15-8.

E. Perennial stream is 229' N.

B. Existing Well QUEBEC NORTH 34-8 is 49' E.

C. Existing Well NORTH QUEBEC 16-8 is 92' SE.

D. Facilities are 118' E & 138' SE.



## Legend

- Proposed Well
- Existing Well
- Plugged Well
- Water Well
- CattleGuard/Gate
- Bridge
- ECD
- 400' Radius
- Facilities Enclosure
- Building/Residence
- Oil & Gas Equipment
- Water Body
- Utility Box
- Railroad
- Fence
- Overhead Power Line
- Pipeline
- Access Road
- Ditch/Canal
- Concrete Ditch

## 400ft Location Drawing

### TALON POINT 15-8

Surface Location: T1S R67W S8

Description of surface uses : Open Field

Field Date: 01/30/2009  
 Drawing Date: 12/11/2009  
 Drafter: JMK  
 Checked By: MPS

Aerial Photo supplied by NAIP - 2009

Prepared for:  
**KERR-MCGEE OIL &  
 GAS ONSHORE LP**



Use our resources to find yours!  
[www.petro-fs.com](http://www.petro-fs.com)

1801 W. 13th Ave Suite 207  
 Denver, CO 80204  
 (303) 928-7128  
 111 E. Third Street  
 Rifle, CO 81650  
 (970) 625-4740