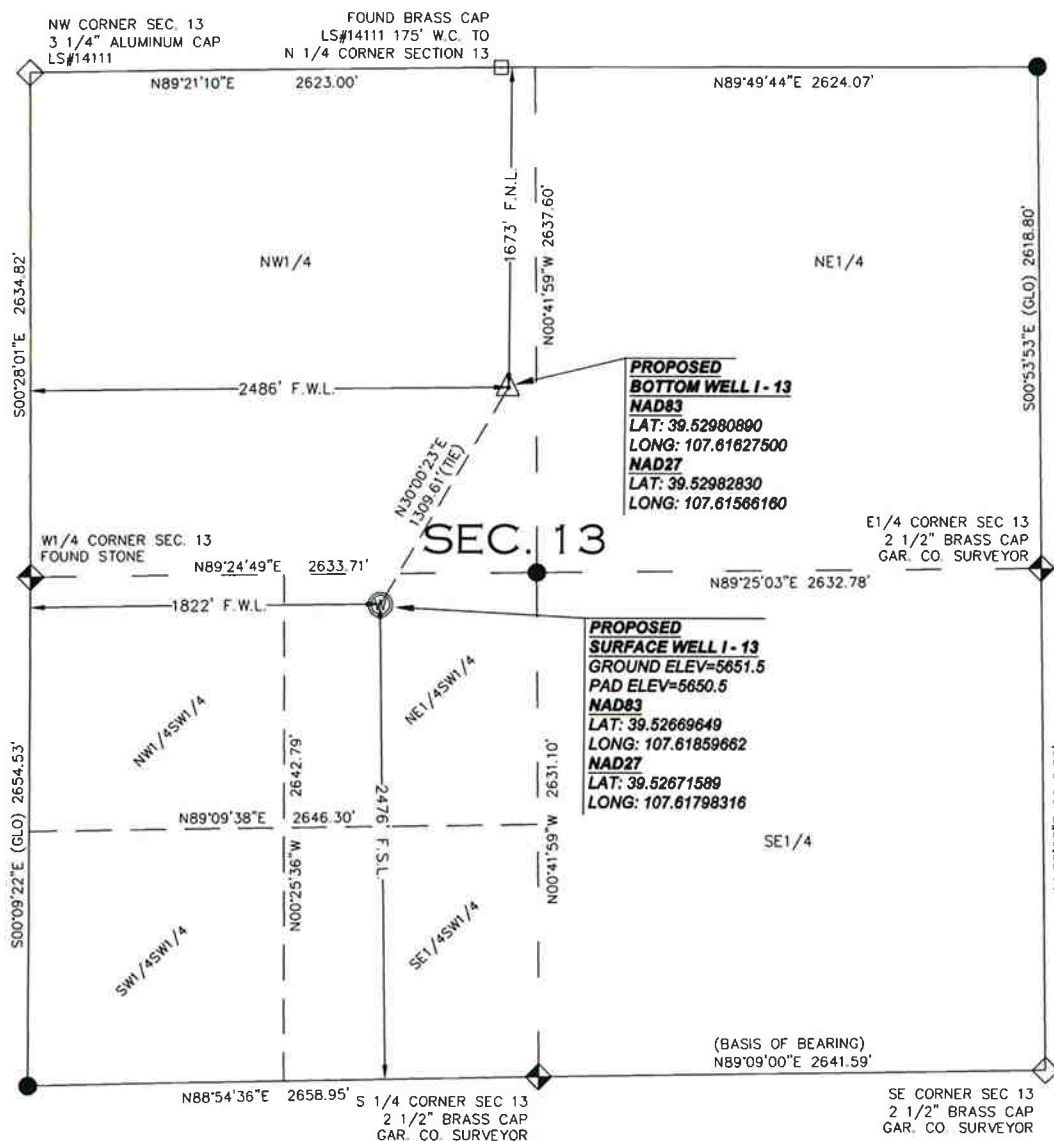


WELL LOCATION PLAT

SECTION 13, TOWNSHIP 6 SOUTH, RANGE 92 WEST, 6TH P.M.



VALLEY FARMS PAD I
GARFIELD COUNTY,
COLORADO

WELL I-13
 2476' FSL
 1822' FWL

WGS 84
LATITUDE
 39.52669649 N
LONGITUDE
 107.61859662 W

NAD 83
NORTHING
 23937.89
EASTING
 102620.54

LEGEND

- ⊙ FIELD SURVEYED WELL LOCATION
- ◇ FIELD SURVEYED SECTION CORNER
- ◆ FIELD SURVEYED QUARTER CORNER
- CALCULATED SECTION CORNER LOCATION
- △ PROPOSED BOTTOM OF WELL LOCATION

SURVEYOR'S STATEMENT

I, FRANK W. HARRINGTON, DO HEREBY STATE THAT THIS SURVEY WAS PREPARED BY HIGH COUNTRY ENGINEERING, INC. FOR ANTERO RESOURCES, THAT SAID SURVEY WAS PREPARED BY ME OR UNDER MY SUPERVISION AND RESPONSIBLE CHARGE AND THAT IT IS TRUE AND CORRECT TO THE BEST OF MY BELIEF AND KNOWLEDGE.

BY 
 FRANK W. HARRINGTON, L.S. NO. 19598

GRAPHIC SCALE

500 0 1000

(IN FEET)
 1 inch = 1000 ft

NOTES:

- LATITUDES AND LONGITUDES ARE BASED ON NAD83, NGS POINTS "ANDERS M.", "TAMBURELLO" AND "WDP 5".
- ELEVATION BASED ON NAVD OF 1988.
- WELL MEASUREMENTS ARE 90° FROM SECTION LINES.
- CURRENT SURFACE LAND USE: IRRIGATED RANGE LAND.
- PDOP = 1.9 FEET.
- BASIS OF BEARINGS WERE DETERMINED BY GPS OBSERVATION YIELDING A BEARING OF N89°09'00"E BETWEEN THE SOUTH QUARTER CORNER OF SECTION 13 BEING A 2 1/2" BRASS CAP, GAR. CO. SURVEYOR AND THE SOUTHEAST CORNER OF SECTION 13 BEING A 2 1/2" BRASS CAP, GAR. CO. SURVEYOR.

HIGH COUNTRY ENGINEERING, INC.



1517 BLAKE AVENUE, STE 101
 GLENWOOD SPRINGS, CO 81601
 PHONE (970) 945-6676 - FAX (970) 945-2555

WWW.HCENG.COM

DRAWN BY: RPK	SCALE: 1" = 1000'
CHECKED BY: FWH	PROJECT No: 2051034
DATE: 12/21/09	PAGE: 2 OF 14
FILE: PAD I PACKET WELL I - 13	

WELL LOCATION PLAT
PREPARED FOR:



ANTERO
RESOURCES

NE 1/4 SW 1/4 OF SECTION 13
 T.6S., R. 92 W. OF THE 6TH P.M.
 GARFIELD COUNTY, COLORADO