

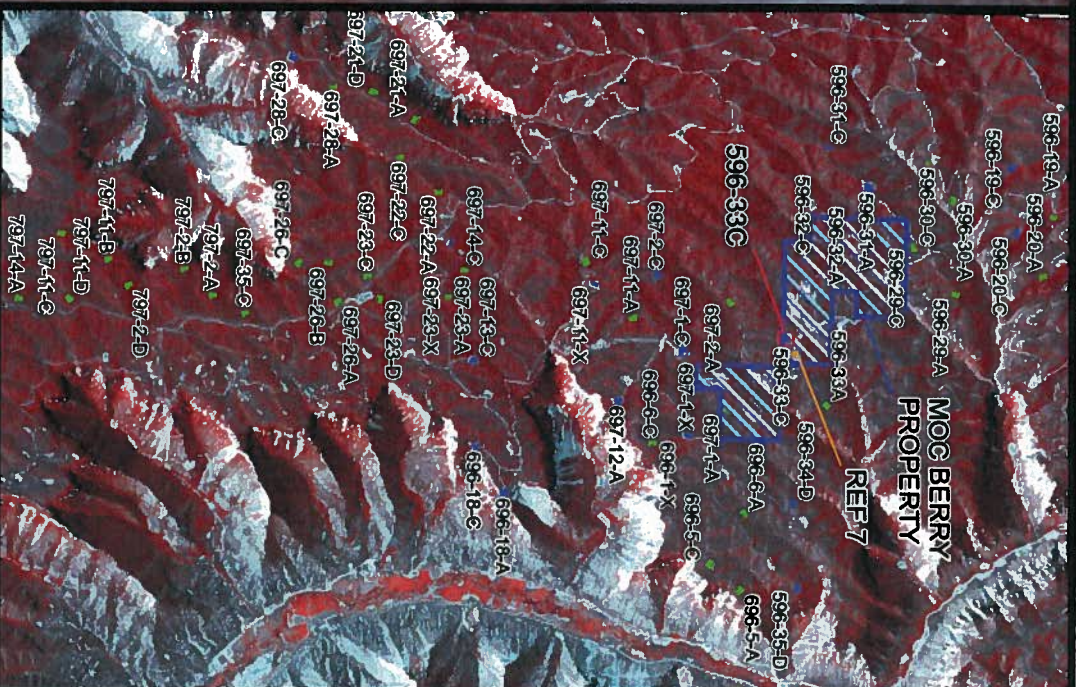
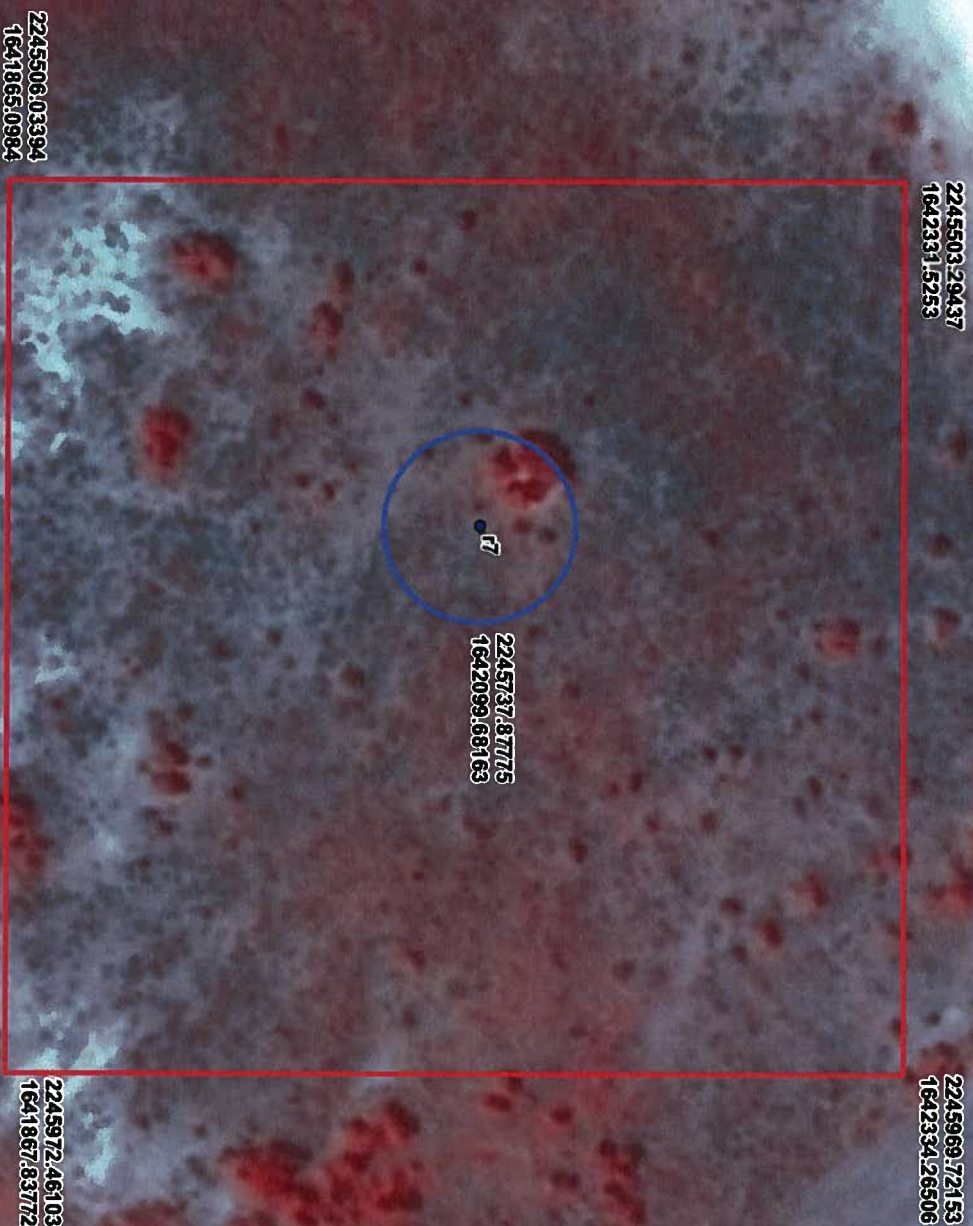
**MARATHON OIL COMPANY**  
PICEANCE BASIN COLORADO

**WELL PAD LOCATION**  
**FOR 596-33C**  
GARFIELD COUNTY, COLORADO

**CK**  
ASSOCIATES, LLC  
BATON ROUGE, LOUISIANA

Drawn:	eeb/AV9.3
Checked:	KEN
Approved:	KEN
Date:	12/28/09
Dwg. No.:	A4332E-75





**REFERENCE AREA 7  
FOR WELL PAD 596-33C  
GARFIELD COUNTY, COLORADO**

Drawn: eeb/AV9.3

**Checked:**

**Approved**

Date: \_\_\_\_\_

Dwg. No.: A4332E-77

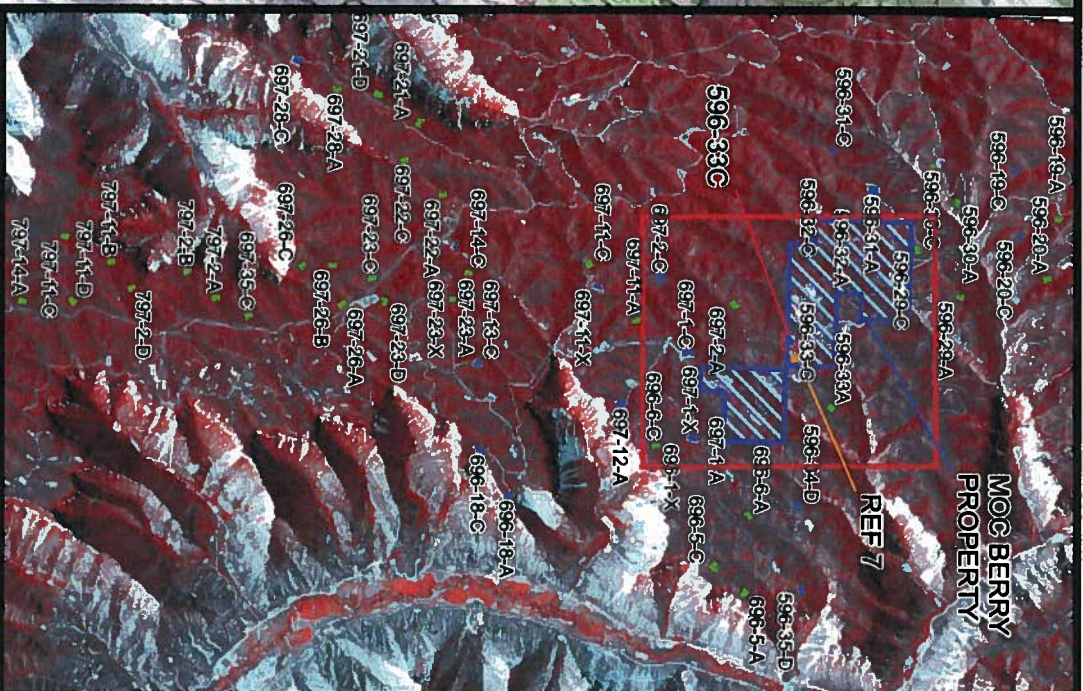
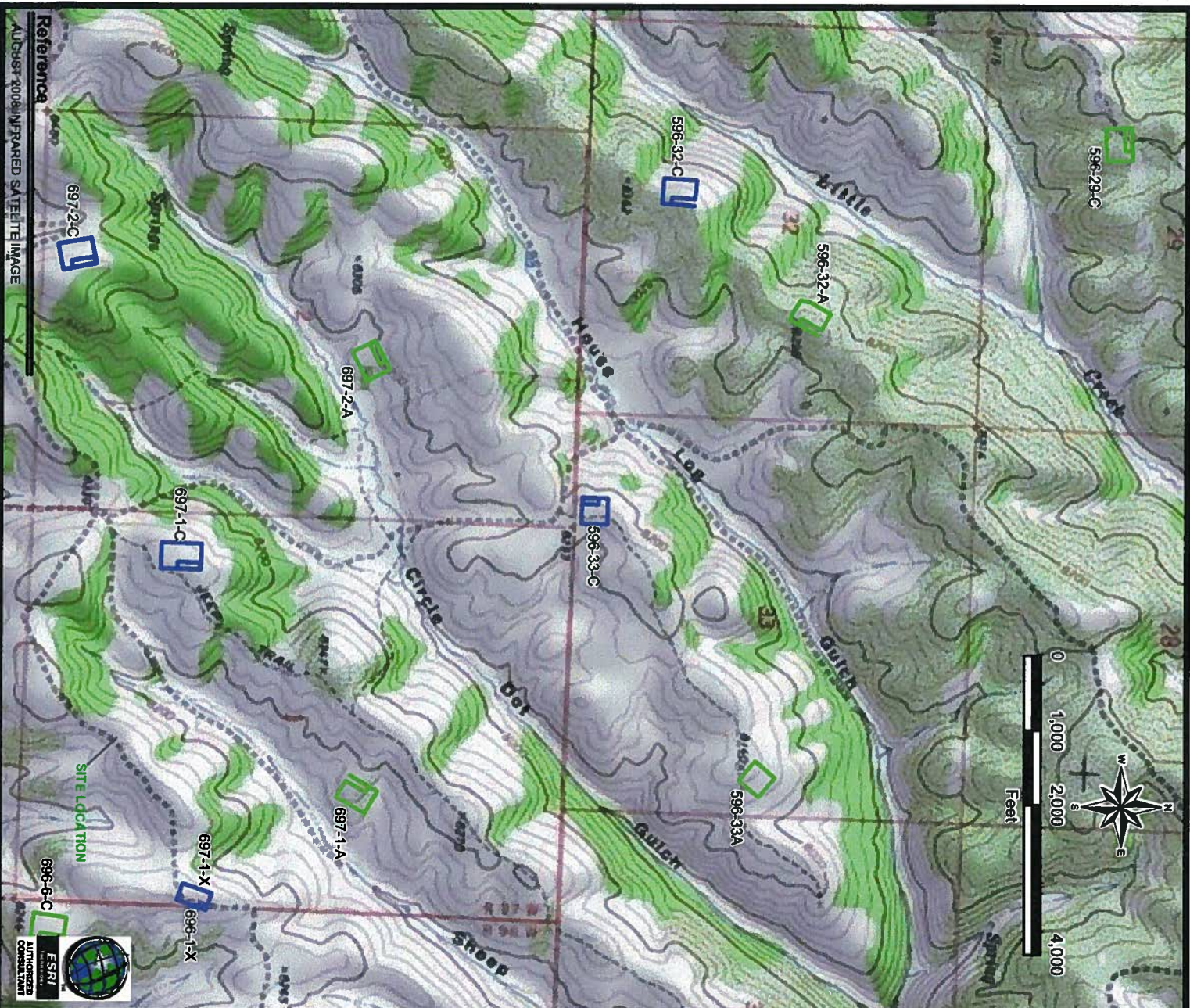
**CK**  
ASSOCIATES, LLC  
BATON ROUGE, LOUISIANA

**Reference**

AUGUST 2008 INFRARED SATELLITE IMAGE





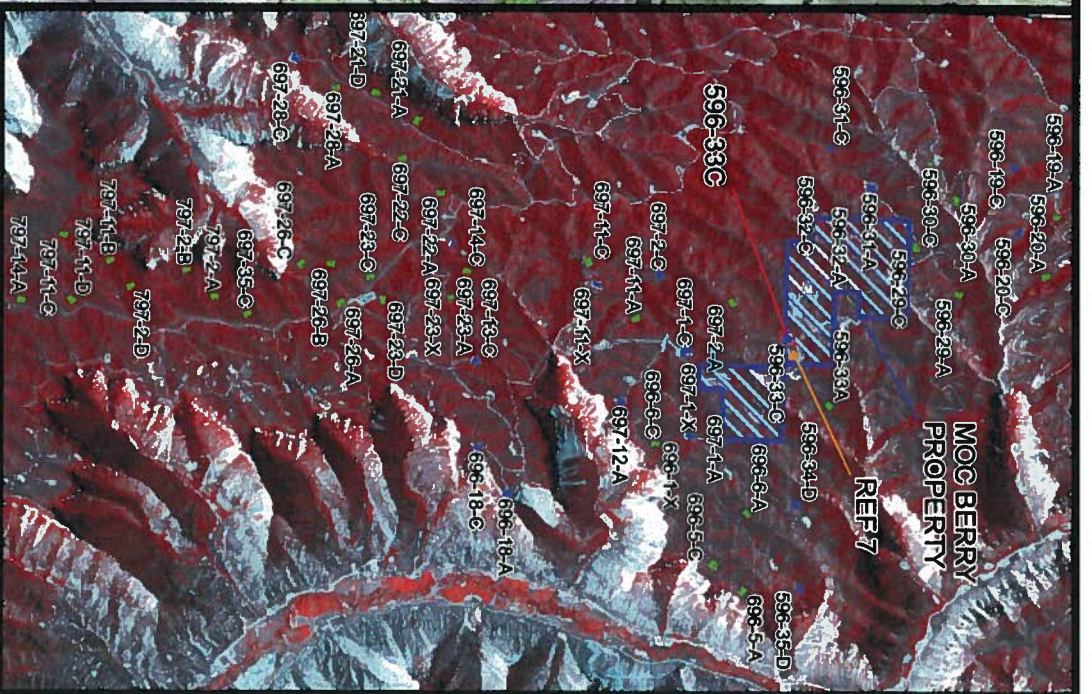
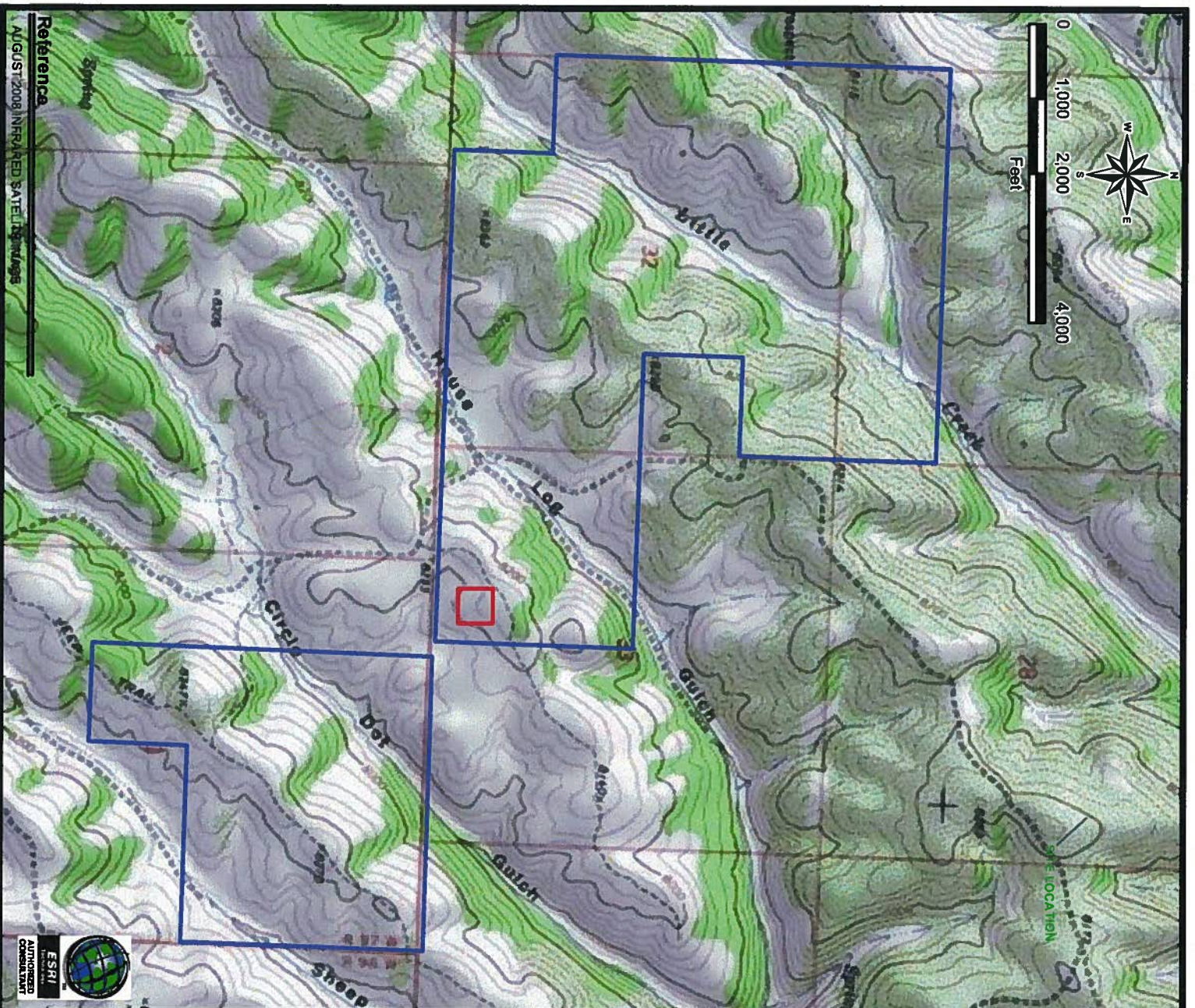


**MARATHON OIL COMPANY**  
**PICEANCE BASIN COLORADO**

**WELL PAD LOCATION**  
**FOR 596-33C**  
**GARFIELD COUNTY, COLORADO**

<b>CK</b> <b>ASSOCIATES, LLC</b> BATON ROUGE, LOUISIANA	Drawn:	eeb/AV9.3
	Checked:	KEN
	Approved:	KEN
	Date:	12/28/09
Dwg. No.:		A4332E-79
<b>FIGURE 5 OF 6</b>		





**MARATHON OIL COMPANY**  
PICEANCE BASIN COLORADO

**REFERENCE AREA 7  
FOR WELL PAD 596-33C**  
GARFIELD COUNTY, COLORADO



ASSOCIATES, LLC

**BATON ROUGE, LOUISIANA**

Drawn:	eeb/AV9.3
Checked:	KEN
Approved:	KEN
Date:	12/28/09
Dwg. No.:	A4332E-80

**FIGURE 6 OF 6**