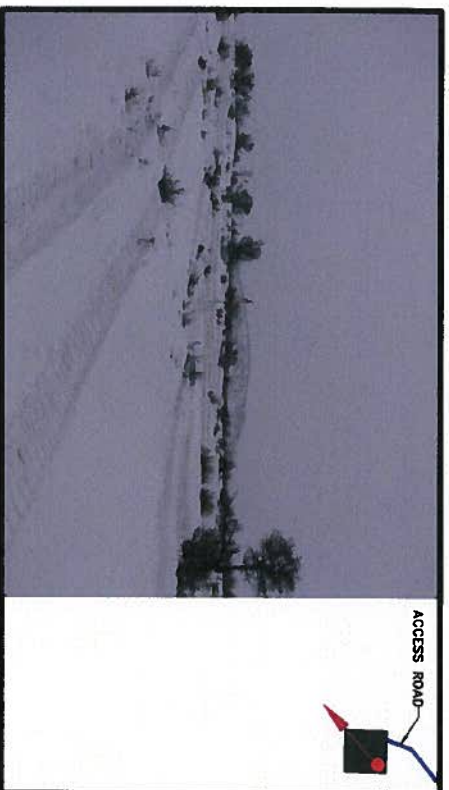
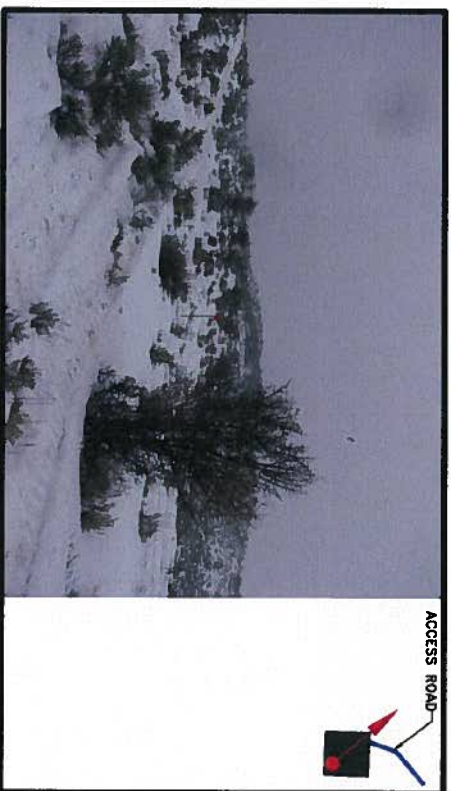


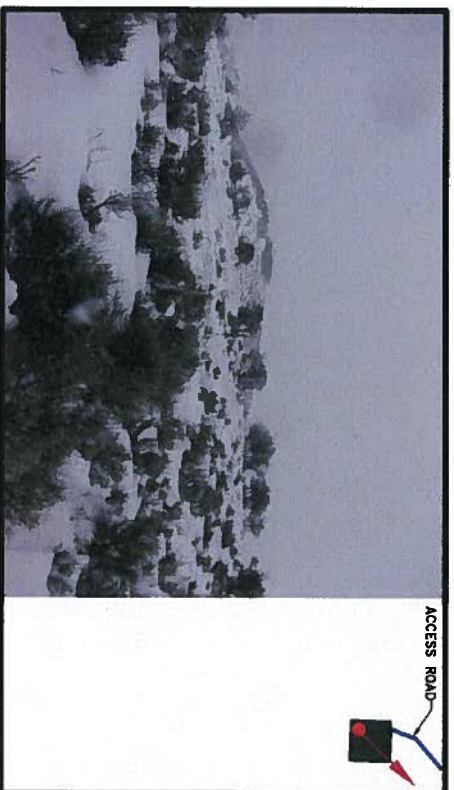
NW CORNER OF PAD LOOKING SOUTHEASTERLY  
MARCH 9, 2007



NE CORNER OF PAD LOOKING SOUTHWESTERLY  
MARCH 9, 2007



SW CORNER OF PAD LOOKING NORTHEASTERLY  
MARCH 9, 2007



SE CORNER OF PAD LOOKING NORTHWESTERLY  
MARCH 9, 2007

**MARATHON OIL COMPANY**  
PICEANCE BASIN COLORADO

**WELL PAD PHOTOS**  
**FOR 596-33C**  
GARFIELD COUNTY, COLORADO

Drawn: eab/AV9.3

Checked: KEN

Approved: KEN

Date: 12/28/09

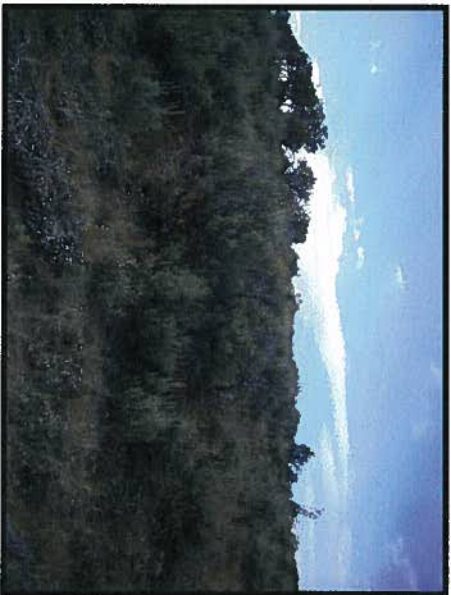
Dwg. No.: A4332E-76

**CK**  
ASSOCIATES, LLC  
BATON ROUGE, LOUISIANA

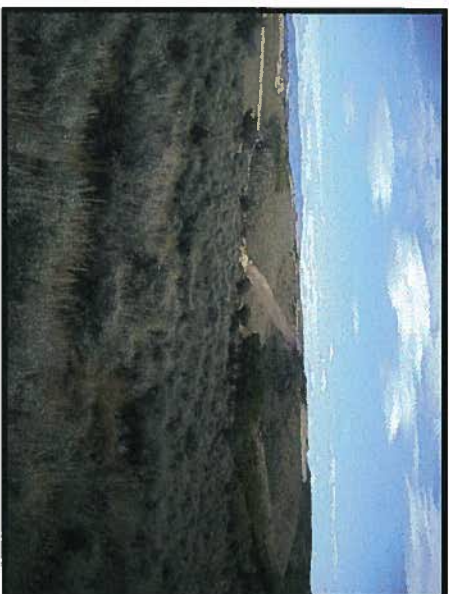




NW CORNER OF PAD LOOKING SOUTHEASTERLY  
SEPTEMBER 22, 2009



W CORNER OF PAD LOOKING NORTHEASTERLY  
SEPTEMBER 22, 2009



NE CORNER OF PAD LOOKING SOUTHWESTERLY  
SEPTEMBER 22, 2009



SE CORNER OF PAD LOOKING NORTHWESTERLY  
SEPTEMBER 22, 2009

**MARATHON OIL COMPANY**  
PICEANCE BASIN COLORADO

**REFERENCE AREA 7**  
**PHOTOS FOR 596-33C**  
GARFIELD COUNTY, COLORADO



**CK**  
**ASSOCIATES, LLC**  
BATON ROUGE, LOUISIANA

Drawn:	eeb/AV9.3
Checked:	KEN
Approved:	KEN
Date:	12/28/09
Dwg. No.:	A4332E-78

**FIGURE 4 OF 6**