

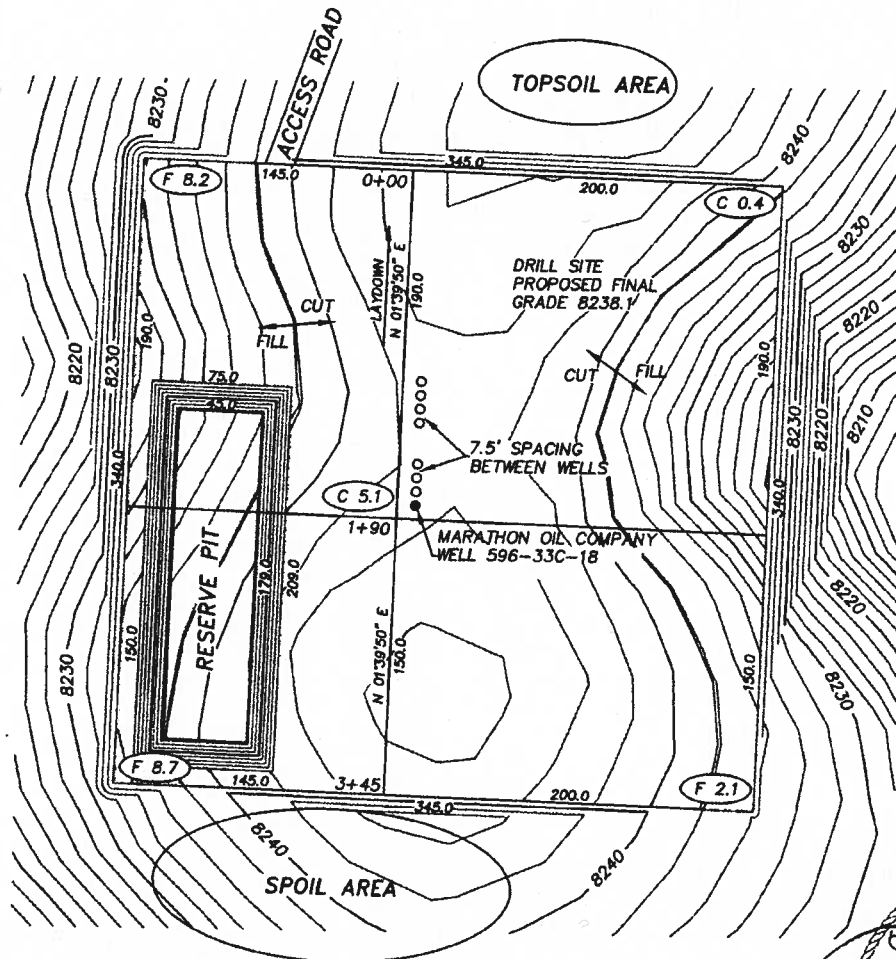
WILLIAM H. SMITH & ASSOCIATES P.C.  
SURVEYING CONSULTANTS  
MARATHON OIL COMPANY  
WELL 596-33C-18

P.O. BOX 820  
GREEN RIVER, WYOMING 82935

550 EAST 2ND NORTH  
PH. 307-875-3638  
FAX. 307-875-3640



Scale: 1" = 100'  
CONTOUR  
INTERVAL 2'



RESERVE PIT SIZE  
209' X 75' X 15'  
SLOPE = 1:1

RESERVE PIT CAPACITY  
31,294 BBLs FULL  
23,369 BBLs WORKING  
CAPACITY WITH 3' FREE BOARD

JOB NO. 26099  
07/16/2007/CED  
PAD 596-33C/PAD596-33C.DWG

CUT/FILL SLOPES: 1.5:1  
QUANTITIES:  
TOTAL CUT = 19,348 BANK CUBIC YARDS  
TOTAL FILL = 10,603 BANK CUBIC YARDS  
TOPSOIL AT 6 INCHES OF DEPTH = 2,484 BANK CUBIC YARDS  
SPOIL = 7,206 BANK CUBIC YARDS  
DISTURBED AREA = 134,128 SQ. FT. OR 3.08 ACRES

PREPARED FOR:  
MARATHON OIL COMPANY  
P.O. Box 3128  
Houston, TX 77253  
5555 San Felipe  
Houston, TX 77056

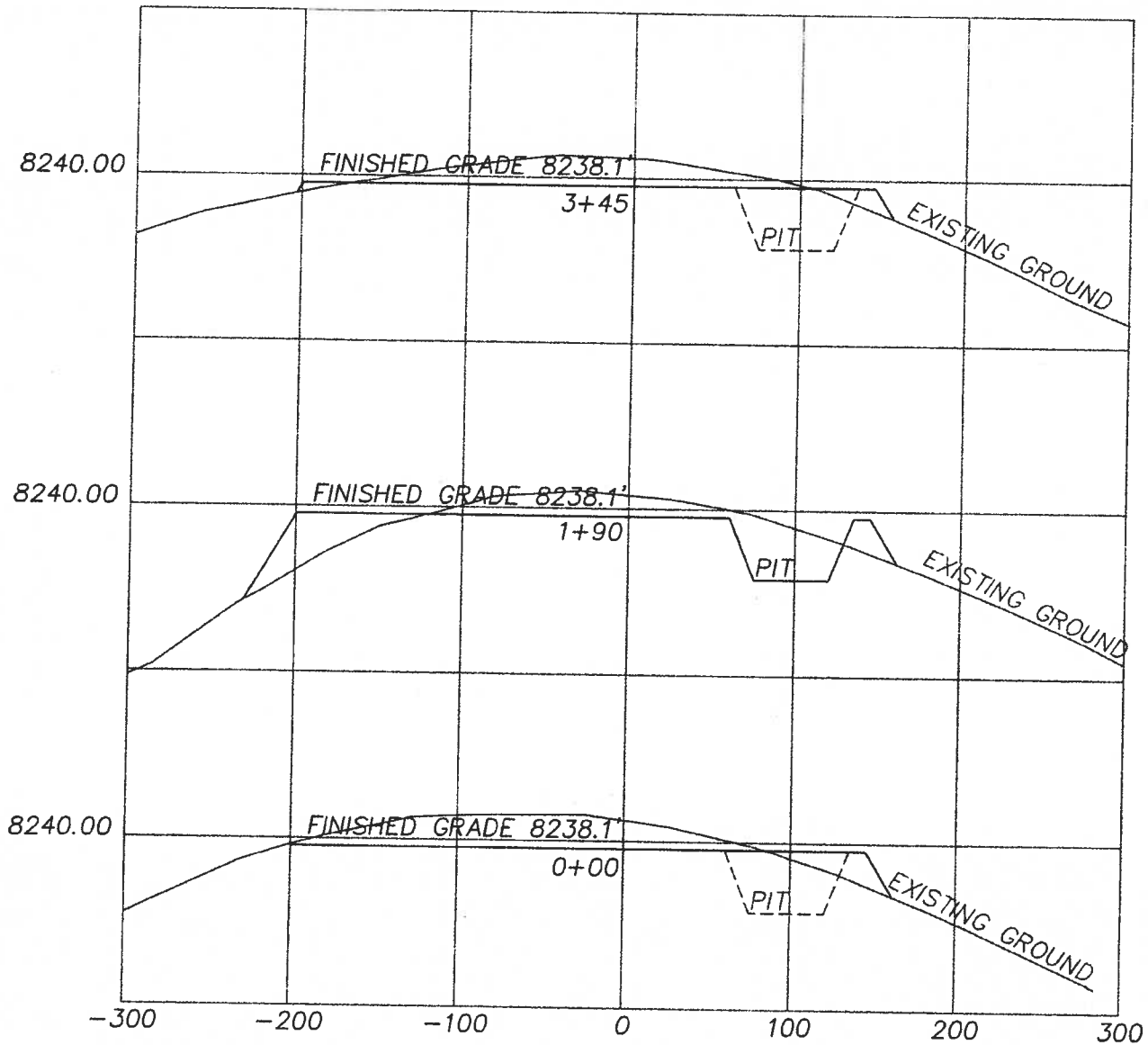
LOCATION:  
WELL 596-33C-18  
1308' FWL and 201' FSL  
WELL FALLS WITHIN THE SW/4  
SECTION 33, T5S, R96W, 6TH PM.  
GARFIELD COUNTY, COLORADO  
SHEET 1 OF 4

WILLIAM H. SMITH & ASSOCIATES P.C.  
SURVEYING CONSULTANTS  
MARATHON OIL COMPANY

P.O. BOX 820  
GREEN RIVER, WYOMING 82935

550 EAST 2ND NORTH  
PH. 307-875-3638  
FAX. 307-875-3640

PAD 596-33C



HORIZONTAL SCALE: 1"=100 FEET  
VERTICAL SCALE: 1"=40.00 FEET

CUT/FILL SLOPES: 1.5:1  
QUANTITIES:  
TOTAL CUT = 19,348 BANK CUBIC YARDS  
TOTAL FILL = 10,603 BANK CUBIC YARDS  
TOPSOIL AT 6 INCHES OF DEPTH = 2,484 BANK CUBIC YARDS  
SPOIL = 7,206 BANK CUBIC YARDS  
DISTURBED AREA = 134,126 SQ. FT. OR 3.08 ACRES

PREPARED FOR:  
MARATHON OIL COMPANY  
P.O. Box 3128  
Houston, TX 77253  
5555 San Felipe  
Houston, TX 77056

LOCATION:  
WELL 596-33C  
WITHIN THE SW/4 SECTION 33,  
T5S, R96W, 6TH PM.  
GARFIELD COUNTY, COLORADO  
SHEET 2 OF 4

JOB NO. 26099  
07/16/2007/CED  
PAD 596-33C/PAD596-33C.DWG

P.O. BOX 820  
GREEN RIVER, WYOMING 82935

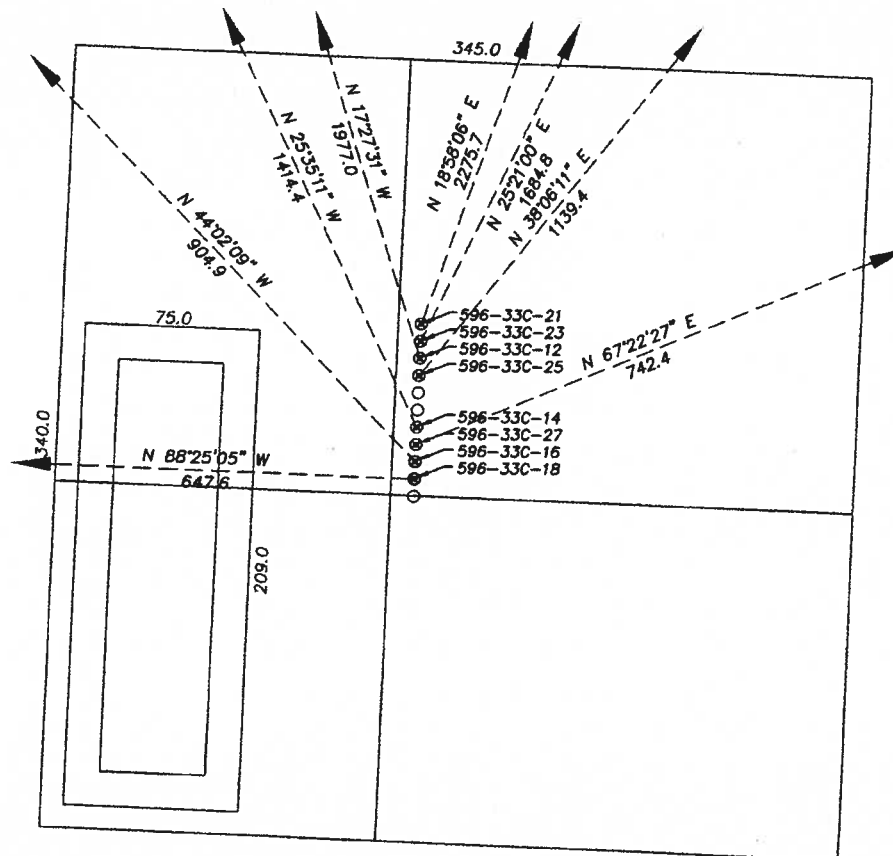
WILLIAM H. SMITH & ASSOCIATES P.C.  
SURVEYING CONSULTANTS  
MARATHON OIL COMPANY

550 EAST 2ND NORTH  
PH. 307-875-3638  
FAX. 307-875-3640

PAD 596-33C DIRECTION LAYOUT



Scale: 1" = 80'



RESERVE PIT SIZE  
209' X 75' X 15'  
SLOPE = 1:1

RESERVE PIT CAPACITY  
31,294 BBLs FULL  
23,369 BBLs WORKING  
CAPACITY WITH 3' FREE BOARD

JOB NO. 26099  
07/16/2007/CED  
PAD596-33C/PAD596-33C DRILL DIRECTION.DWG

CUT/FILL SLOPES: 1.5:1  
QUANTITIES:  
TOTAL CUT = 19,348 BANK CUBIC YARDS  
TOTAL FILL = 10,603 BANK CUBIC YARDS  
TOPSOIL AT 6 INCHES OF DEPTH = 2,484 BANK CUBIC YARDS  
SPOIL = 7,206 BANK CUBIC YARDS  
DISTURBED AREA = 134,126 SQ. FT. OR 3.08 ACRES

PREPARED FOR:  
MARATHON OIL COMPANY  
P.O. Box 3128  
Houston, TX 77253  
5555 San Felipe  
Houston, TX 77056

LOCATION:  
PAD 596-33C  
WITHIN THE SW/4 SECTION 33,  
T5S, R96W, 6TH PM.  
GARFIELD COUNTY, COLORADO  
SHEET 3 OF 4

P.O. BOX 820  
GREEN RIVER, WYOMING 82935

[illegible]

LOCATION:  
PAD 596-33C  
WITHIN THE SW/4 SECTION 33,  
T5S, R96W, 6TH PM.  
GARFIELD COUNTY, COLORADO  
SHEET 4 OF 4