

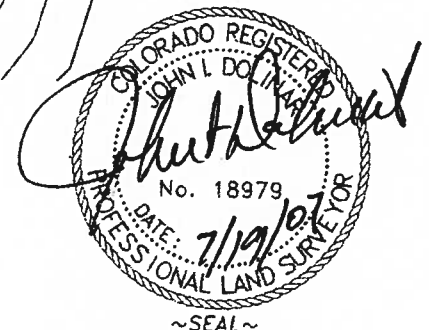
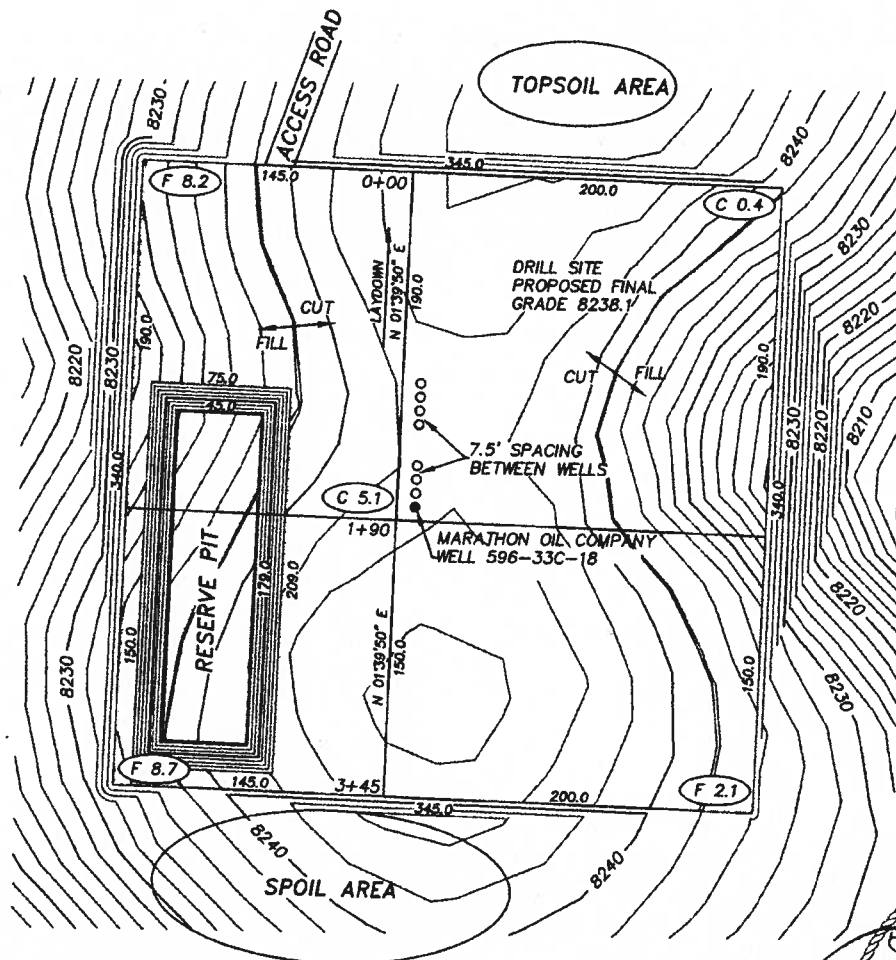
WILLIAM H. SMITH & ASSOCIATES P.C.
SURVEYING CONSULTANTS
MARATHON OIL COMPANY
WELL 596-33C-18

P.O. BOX 820
GREEN RIVER, WYOMING 82935

550 EAST 2ND NORTH
PH. 307-875-3638
FAX. 307-875-3640



Scale: 1" = 100'
CONTOUR
INTERVAL 2'



RESERVE PIT SIZE
209' X 75' X 15'
SLOPE = 1:1

RESERVE PIT CAPACITY
31,294 BBLs FULL
23,369 BBLs WORKING
CAPACITY WITH 3' FREE BOARD

JOB NO. 26099
07/16/2007/CED
PAD 596-33C/PAD596-33C.DWG

CUT/FILL SLOPES: 1.5:1
QUANTITIES:
TOTAL CUT = 19,348 BANK CUBIC YARDS
TOTAL FILL = 10,603 BANK CUBIC YARDS
TOPSOIL AT 6 INCHES OF DEPTH = 2,484 BANK CUBIC YARDS
SPOIL = 7,206 BANK CUBIC YARDS
DISTURBED AREA = 134,128 SQ. FT. OR 3.08 ACRES

PREPARED FOR:
MARATHON OIL COMPANY
P.O. Box 3128
Houston, TX 77253
5555 San Felipe
Houston, TX 77056

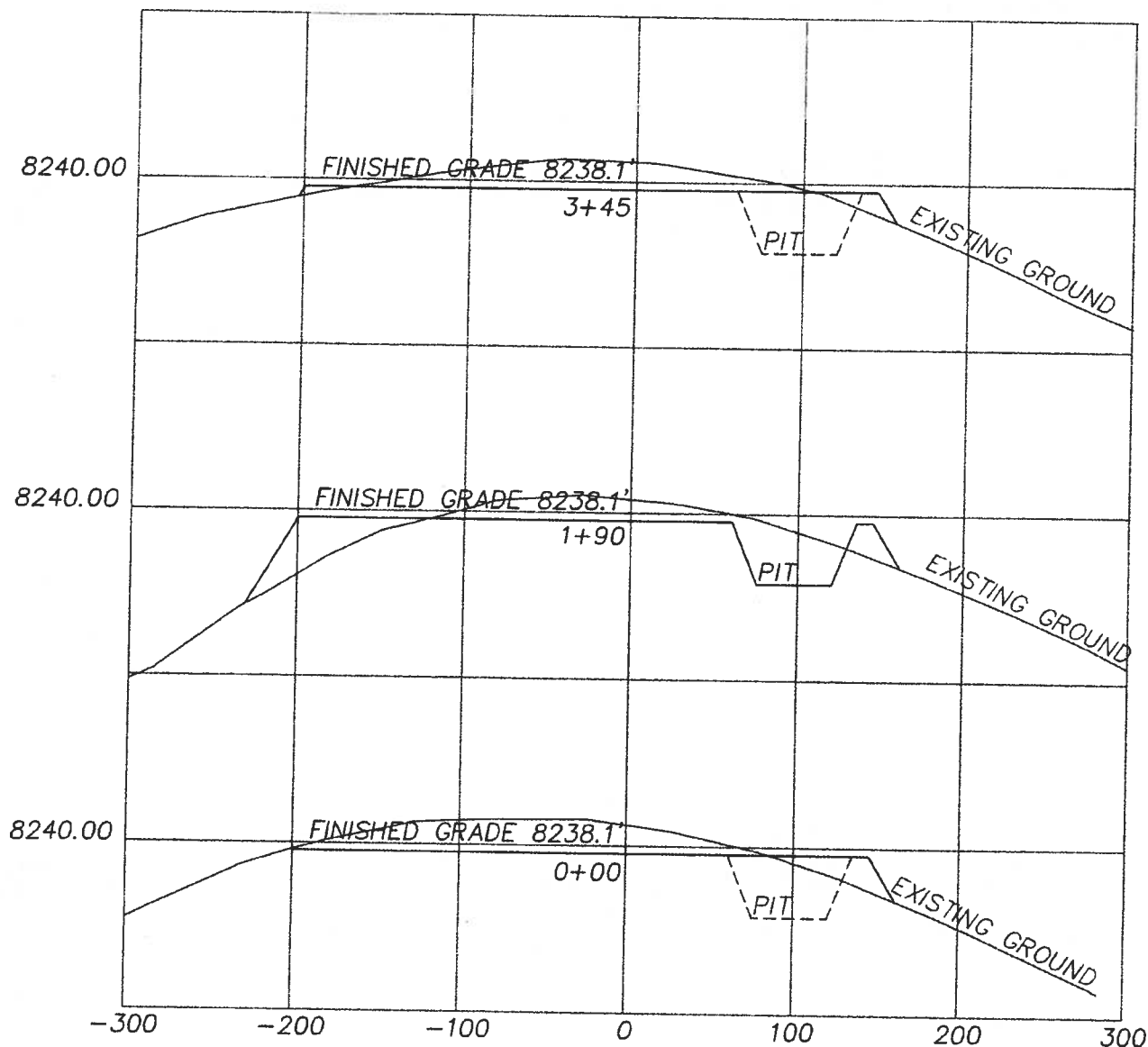
LOCATION:
WELL 596-33C-18
1308' FWL and 201' FSL
WELL FALLS WITHIN THE SW/4
SECTION 33, T5S, R96W, 6TH PM.
GARFIELD COUNTY, COLORADO
SHEET 1 OF 4

WILLIAM H. SMITH & ASSOCIATES P.C.
SURVEYING CONSULTANTS
MARATHON OIL COMPANY

P.O. BOX 820
GREEN RIVER, WYOMING 82935

550 EAST 2ND NORTH
PH. 307-875-3638
FAX. 307-875-3640

PAD 596-33C



HORIZONTAL SCALE: 1"=100 FEET
VERTICAL SCALE: 1"=40.00 FEET

CUT/FILL SLOPES: 1.5:1
QUANTITIES:
TOTAL CUT = 19,348 BANK CUBIC YARDS
TOTAL FILL = 10,603 BANK CUBIC YARDS
TOPSOIL AT 6 INCHES OF DEPTH = 2,484 BANK CUBIC YARDS
SPOIL = 7,206 BANK CUBIC YARDS
DISTURBED AREA = 134,126 SQ. FT. OR 3.08 ACRES

JOB NO. 26099
07/16/2007/CED
PAD 596-33C/PAD596-33C.DWG

PREPARED FOR:
MARATHON OIL COMPANY
P.O. Box 3128
Houston, TX 77253
5555 San Felipe
Houston, TX 77056

LOCATION:
WELL 596-33C
WITHIN THE SW/4 SECTION 33,
T5S, R96W, 6TH PM.
GARFIELD COUNTY, COLORADO
SHEET 2 OF 4

WILLIAM H. SMITH & ASSOCIATES P.C.
SURVEYING CONSULTANTS
MARATHON OIL COMPANY

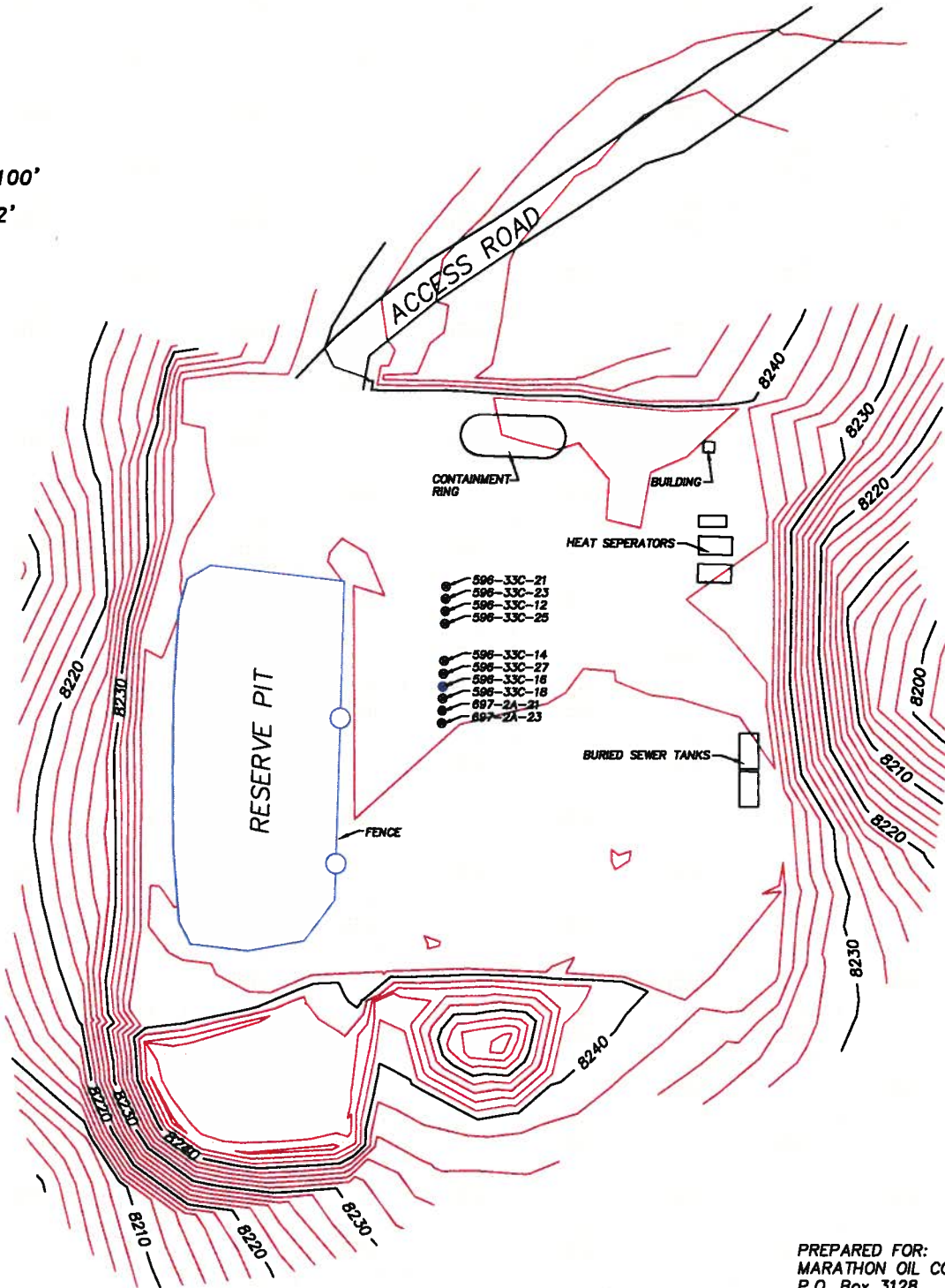
P.O. BOX 820
GREEN RIVER, WYOMING 82935

550 EAST 2ND NORTH
PH. 307-875-3638
FAX. 307-875-3640

PAD 596-33C ASBUILT



Scale: 1" = 100'
CONTOUR
INTERVAL 2'



PREPARED FOR:
MARATHON OIL COMPANY
P.O. Box 3128
Houston, TX 77253
5555 San Felipe
Houston, TX 77056

LOCATION:
PAD 596-33C
FALLS WITHIN THE SW/4 SECTION 33,
T 5 S, R 96 W, 6TH PM.
GARFIELD COUNTY, COLORADO
SHEET 1 OF 1

JOB NO. 26099
04/28/08 CED
PAD596-33C/PAD596-33C ASBUILT.DWG