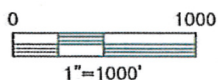
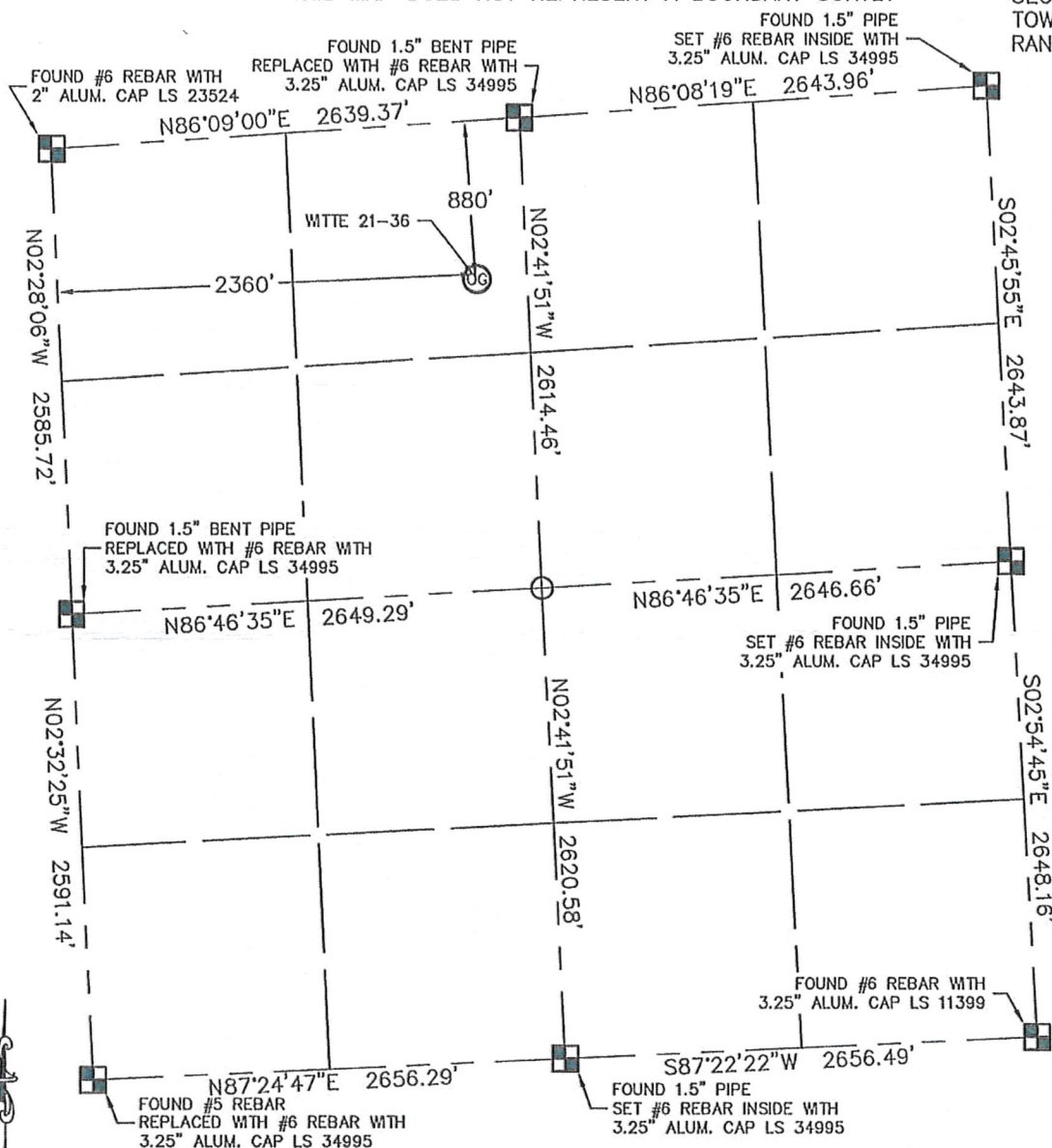


WELL LOCATION CERTIFICATE

THIS MAP DOES NOT REPRESENT A BOUNDARY SURVEY

SECTION: 36
TOWNSHIP: 1S
RANGE: 45W



In accordance with a request from Dan Casper with Noble Energy Inc.
King Surveyors Inc. has determined the surface location of the WITTE 21-36 to be 880' from the NORTH
line and 2360' from the WEST line as measured at right angles from the section line of Section 36,
Township 1 South, Range 45 West of the Sixth Principal Meridian, County of Yuma, State of Colorado.

I hereby state that this Well Location Certificate was prepared by me, or under my direct
supervision, that the fieldwork was completed on 11-19-09, for and on behalf of Noble Energy Inc.
That this is not a Land Survey Plat or an Improvement Survey Plat, and that it is not to be relied
upon for establishment of fence, building, or other future improvement lines.

NOTE:

- 1) Bearings shown are Grid Bearings of the Colorado State Plane Coordinate System, North Zone, North American Datum 1983/2007. The lineal dimensions as contained herein are based upon the "U.S. Survey Foot."
- 2) Ground elevations are based on an observed GPS elevation (NAVD 1988 DATUM).
- 3) IMPROVEMENTS: See LOCATION DRAWING exhibit for all visible improvements within 400' of well head.
- 4) SURFACE USE: CROP-DRYLAND

SURFACE LOCATION

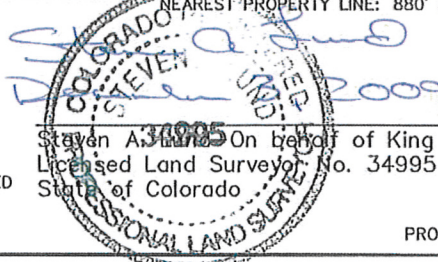
LATITUDE: 39.93104°N
LONGITUDE: 102.36512°W
PDOP: 1.5
ELEV: 3909
1/4 1/4: NE1/4NW1/4
NEAREST PROPERTY LINE: 880' NORTH

NOTE

According to Colorado law, you must commence
any legal action based upon any defect in this
W.L.C. within three years after you discover such
defect. In no event, may any action based upon
any defect in this survey be commenced more
than ten years after the date of the certificate
shown hereon. (13-80-105 C.R.S.)

LEGEND

- = ALIQUOT MONUMENT AS DESCRIBED
- = CALCULATED POSITION



Steven A. King On behalf of King Surveyors, Inc.
Licensed Land Surveyor No. 34995
State of Colorado

PROJECT#: 2009255