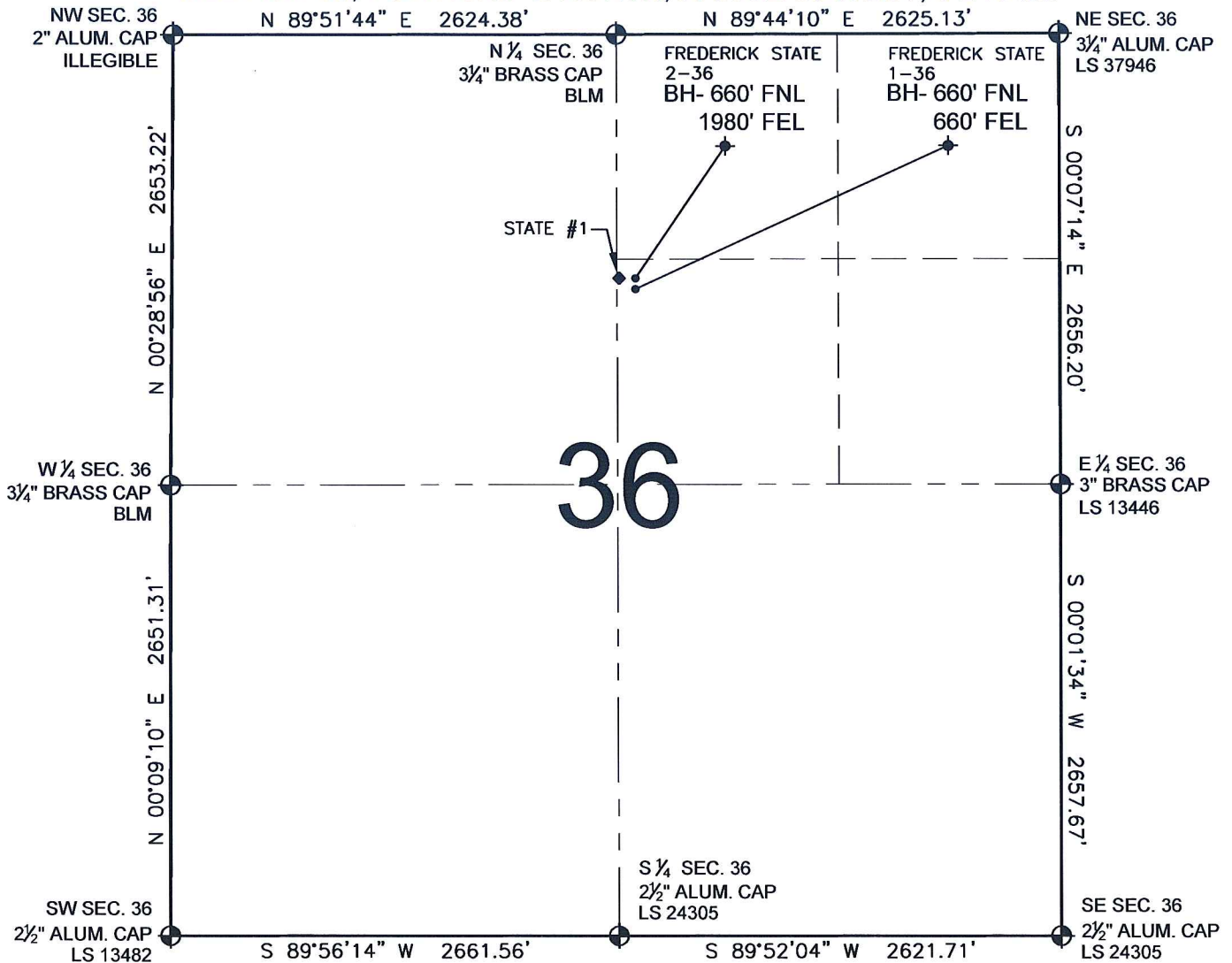


# PAD DRAWING - FREDERICK STATE 2 PAD

SECTION 36, TOWNSHIP 2 NORTH, RANGE 68 WEST, 6TH P.M.



## LEGEND

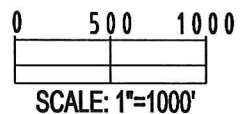
- = EXISTING MONUMENT   
 = BOTTOM HOLE   
 BH= BOTTOM HOLE  
 = PROPOSED WELL   
 = EXISTING WELL

## NOTES:

- THIS SURVEY WAS DONE BY GPS METHODS AND CONFORMS TO THE MINIMUM STANDARDS SET BY THE C.O.G.C.C., RULE NO. 215
- ELEVATIONS SHOWN AT THE WELL HEAD, AS WELL AS HORIZONTAL CONTROL, ARE BASED ON GPS-RTK VALUES DERIVED FROM DOING 2-HOUR STATIC GPS SESSIONS AND REDUCTIONS USING O.P.U.S. SOLUTIONS.  
VERTICAL = NAVD88; HORIZONTAL = NAD83/92
- THE BEARINGS SHOWN HEREON ARE BASED ON GPS OBSERVATIONS BETWEEN THE MONUMENTS SHOWN HEREON AS FOUND ON THE FIELD DATE BELOW.
- DISTANCES SHOWN ARE AT GROUND LEVEL, AS MEASURED IN THE FIELD, WITH TIES TO WELLS MEASURED AT A PERPENDICULAR TO SECTION LINES.

## NOTES:

- FREDERICK STATE 1-36 TO BE AT 1454' FNL, 2516' FEL.  
 BOTTOM HOLE AT 660' FNL & 660' FEL.  
 FREDERICK STATE 2-36 TO BE AT 1438' FNL, 2516' FEL.  
 BOTTOM HOLE AT 660' FNL & 1980' FEL.  
 STATE #1 IS 1438' FNL, 2566' FEL.



REVISIONS		PREPARED BY:
INITIAL	DATE	
SMF	11-04-09	 Petroleum Field Services, LLC 1801 W. 13th Ave. Denver, CO 80204

KERR-MCGEE OIL & GAS ONSHORE LP

FIELD DATE:  
10-28-09

DRAWING DATE:  
10-30-09

BY:  
SMF

PAD NAME:  
FREDERICK STATE 2 PAD

SURFACE LOCATION:

WELD COUNTY, COLORADO  
SW 1/4 NE 1/4, SEC. 36, T2N, R68W