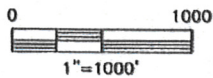
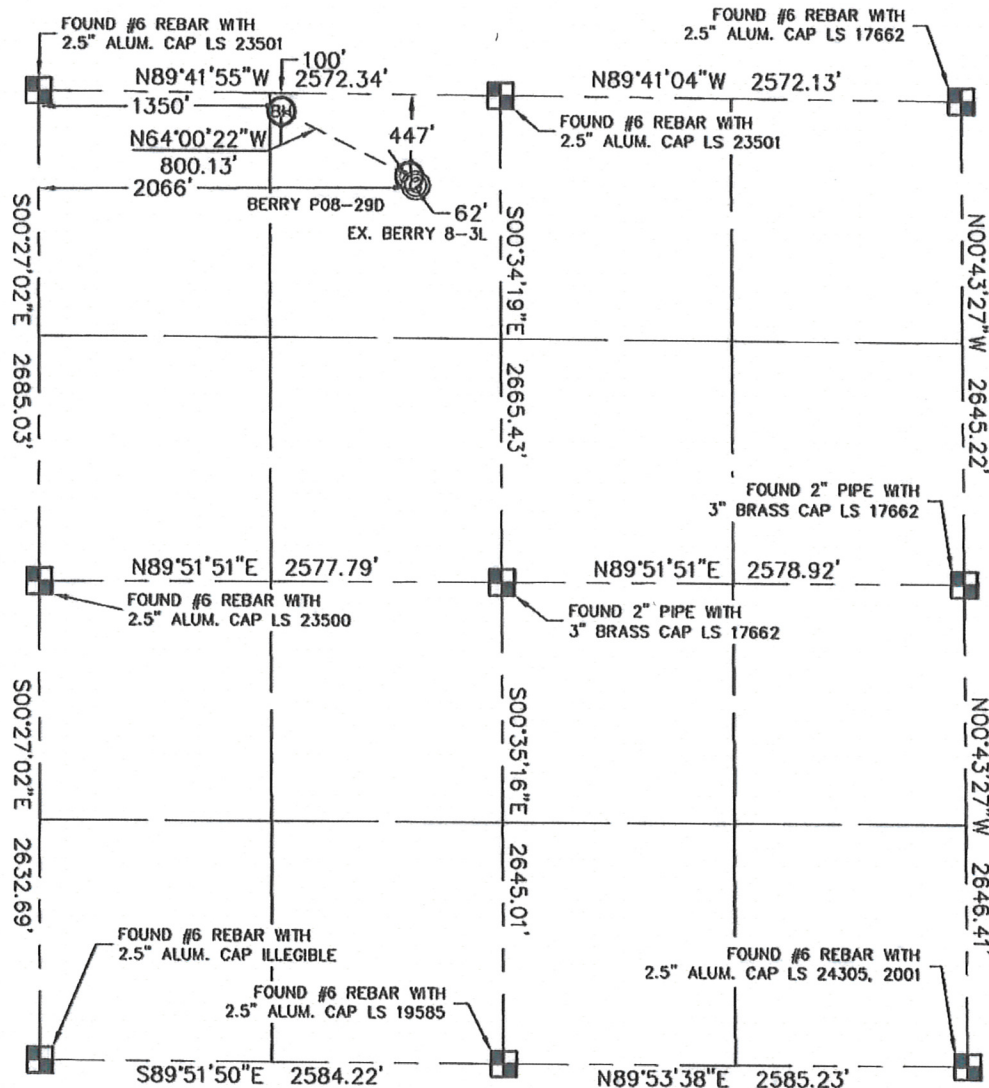


KING SURVEYORS, INC. 650 E. GARDEN DR. WINDSOR, CO 80550

WELL LOCATION CERTIFICATE

THIS MAP DOES NOT REPRESENT A BOUNDARY SURVEY

SECTION: 8
TOWNSHIP: 3N
RANGE: 67W



In accordance with a request from Erik VanDecar with Noble Energy Inc. King Surveyors Inc. has determined the surface location of the Berry P08-29D to be 447' from the North line and 2066' from the West line and the bottom hole to be 100' from the North line and 1350' from the West line as measured at right angles from the section line of Section 8, Township 3 North, Range 67 West of the Sixth Principal Meridian, County of Weld, State of Colorado.

I hereby state that this Well Location Certificate was prepared by me, or under my direct supervision, that the fieldwork was completed on 7-29-09, for and on behalf of Noble Energy Inc. That this is not a Land Survey Plat or an Improvement Survey Plat, and that it is not to be relied upon for establishment of fence, building, or other future improvement lines.

NOTE:

- 1) Bearings shown are Grid Bearings of the Colorado State Plane Coordinate System, North Zone, North American Datum 1983/2007. The lineal dimensions as contained herein are based upon the "U.S. Survey Foot."
- 2) Ground elevations are based on an observed GPS elevation (NAVD 1988 DATUM).
- 3) NEAREST EXISTING WELL: BERRY 8-3L 62'
- 4) IMPROVEMENTS: See VISIBLE IMPROVEMENTS exhibit for all visible improvements within 400' of well head.
- 5) SURFACE USE: PASTURE, EX. WELL SITE



SURFACE LOCATION
LATITUDE: 40.24647°N
LONGITUDE: 104.91587°W
PDOP: 1.8
ELEV: 4819
1/4, 1/4: NE1/4NW1/4
NEAREST PROPERTY LINE: 447' NORTH

BOTTOM HOLE
LATITUDE: 40.24745°N
LONGITUDE: 104.91844°W

NOTE

According to Colorado law, you must commence any legal action based upon any defect in this W.L.C. within three years after you discover such defect. In no event, may any action based upon any defect in this survey be commenced more than ten years after the date of the certificate shown hereon. (13-80-105 C.R.S.)

LEGEND

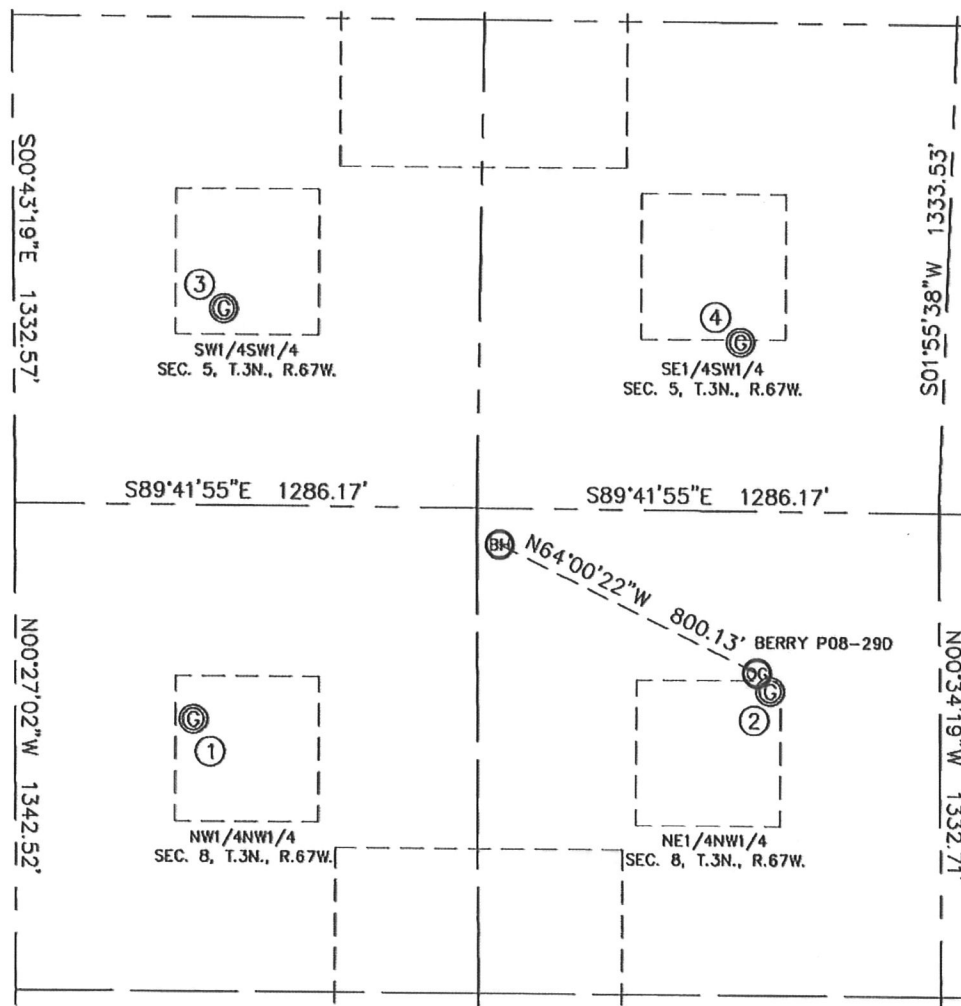
-  = ALIQUOT MONUMENT AS DESCRIBED
 = CALCULATED POSITION

Steven A. Lund, on behalf of King Surveyors, Inc.
Licensed Land Surveyor No. 34995
State of Colorado

PROJECT#: 2009245

KING SURVEYORS, INC. 650 E. GARDEN DR. WINDSOR, CO 80550
SITE SKETCH

SECTION: 8
 TOWNSHIP: 3N
 RANGE: 67W



- | | | | |
|------------------|------------------|------------------|------------------|
| ① | ② | ③ | ④ |
| BERRY 8-4L | BERRY 8-3L | HSR-SCHELL 13-5 | HSR-SCHELL 14-5 |
| NW1/4NW1/4 | NE1/4NW1/4 | SW1/4SW1/4 | SE1/4SW1/4 |
| 591' FNL | 496' FNL | 537' FSL | 460' FSL |
| 496' FWL | 2103' FWL | 584' FWL | 2025' FWL |
| LAT-40.24613°N | LAT-40.24633°N | LAT-40.24922°N | LAT-40.24896°N |
| LONG-104.92150°W | LONG-104.91574°W | LONG-104.92119°W | LONG-104.91603°W |
| PDOP: 1.7 | PDOP: 2.4 | PDOP: 2.0 | PDOP: 1.3 |
| ELEV: 4850 | ELEV: 4818 | ELEV: 4832 | ELEV: 4840 |

