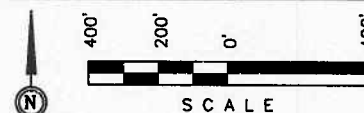
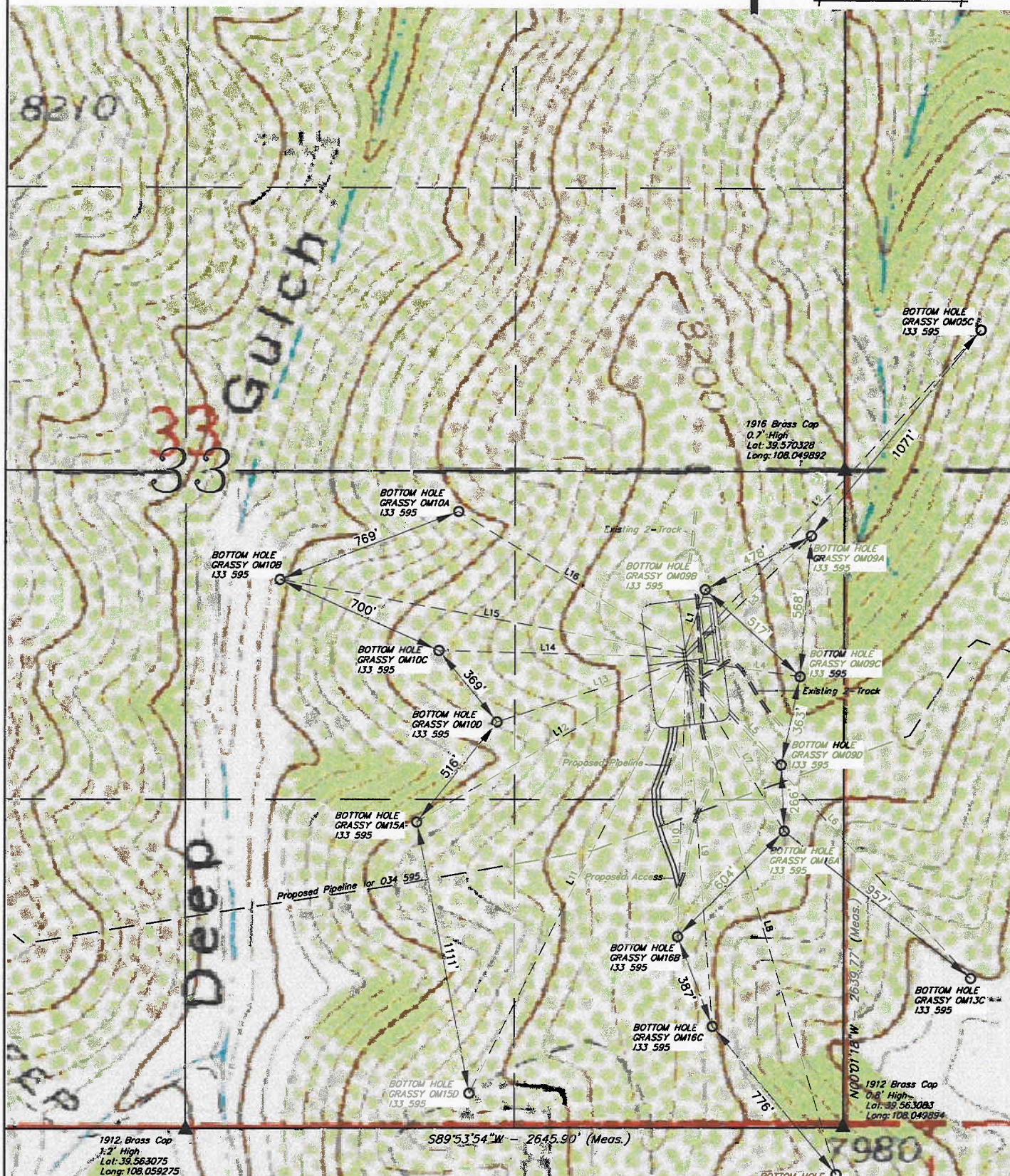


SCALE: 1" = 400'
DATE: 05-13-09
Drawn By: D.R.B.
Revised: 09-28-09 D.R.B.
Revised: 10-01-09 D.R.B.

BERRY PETROLEUM COMPANY
BOTTOM HOLE FOOTAGE
WELL PAD 133 595
SECTION 33, T5S, R95W, 6th P.M.
NE 1/4 SE 1/4



Sheet 6 of 12



LINE TABLE		
LINE	BEARING	LENGTH
L1	N18°28'22"E	253.62'
L2	N42°16'10"E	1758.93'
L3	N45°49'43"E	700.40'
L4	S82°06'37"E	460.99'
L5	S43°15'18"E	554.30'
L6	S42°27'15"E	1691.00'
L7	S31°14'30"E	748.17'
L8	S16°35'28"E	2093.28'
L9	S04°26'36"E	1414.44'
L10	S01°34'28"W	1064.48'
L11	S26°49'27"W	1916.04'
L12	S59°27'12"W	1248.32'
L13	S71°50'33"W	790.68'
L14	N88°35'40"W	983.69'
L15	N79°45'20"W	1647.44'
L16	N58°24'27"W	1058.61'