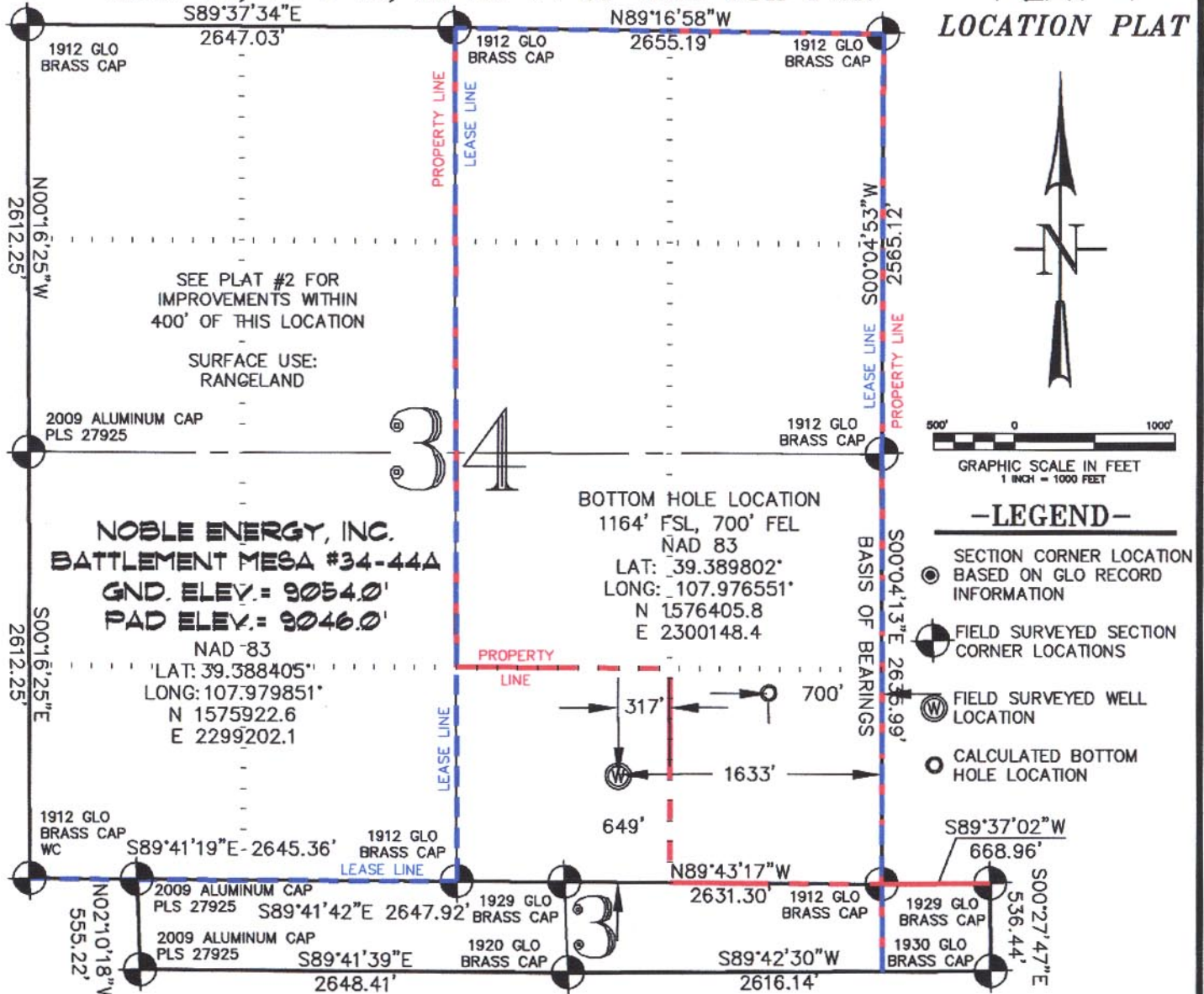


SEC. 34, T. 7 S., R. 95 W. OF THE 6TH P.M.

PLAT #1  
LOCATION PLAT



THIS WELL LOCATION PLAT WAS PREPARED FOR NOBLE ENERGY INC. TO LOCATE THE BATTLEMENT MESA #34-44A WELL, 649 FEET FROM THE SOUTH LINE AND 1633 FEET FROM THE EAST LINE IN THE SW1/4 SE1/4 OF SECTION 34, T. 7 S., R. 95 W. OF THE 6TH P.M. GARFIELD COUNTY, COLORADO.

#### REFERENCE NOTES

- 1) T. 7 S., R. 95 W., 6TH P.M. GLO PLAT.
- 2) U.S.G.S. QUAD: PARACHUTE, CO
- 3) ELEVATIONS BASED ON N.A.V.D. 1988
- 4) LATITUDES AND LONGITUDES ARE BASED ON NAD 83, COLORADO CENTRAL ZONE.
- 5) GPS OPERATOR ROBERT WOOD, OBSERVED A PDOP OF 2.3.
- 6) ALL GPS OBSERVATIONS ARE IN COMPLIANCE WITH COGCC RULE NO. 215.
- 7) SURFACE AND BOTTOM HOLE LOCATIONS ARE MEASURED 90° FROM SECTION LINES.

#### SURVEYOR'S CERTIFICATE

I, George R. Bauer: a Professional Land Surveyor in the State of Colorado do hereby certify that this Survey was made under my direct supervision, and that this Plat represents said Survey.

*(Signature)*  
GEORGE R. BAUER  
27925  
12/4/09  
PROFESSIONAL LAND SURVEYOR

COLORADO P.L.S. 27925



CONSTRUCTION SURVEYS, INC.  
0012 SUNRISE BLVD.  
SILT, CO 81652  
(970) 876-5753

VIEW: 1K

SURVEYED: 06/24/09	SCALE: 1" = 1000'
DRAFTED: 11/30/09	DWG: Noble\2006\Noble340
CHECKED: 12/03/09	SHEET: 1 of 10