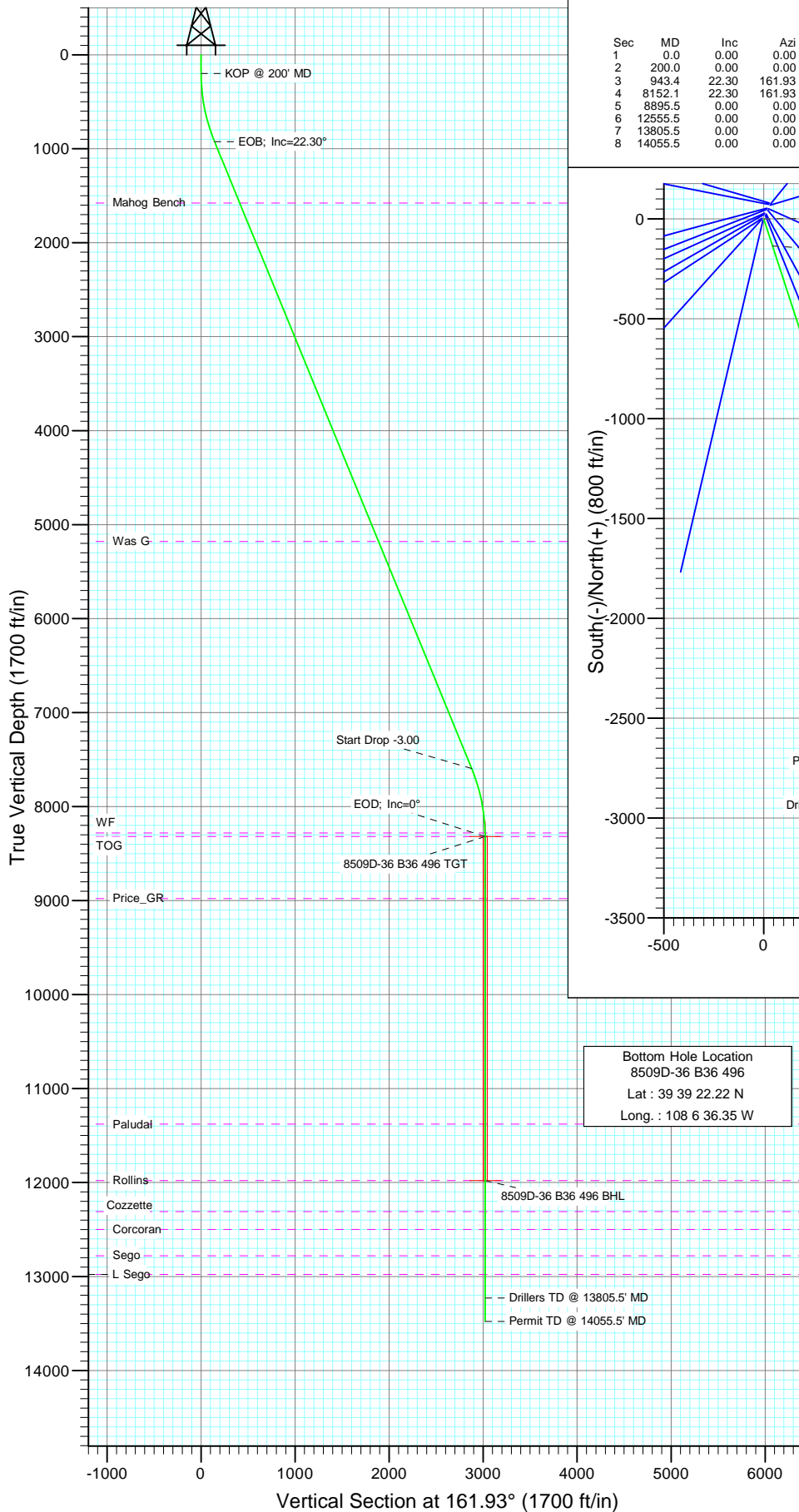
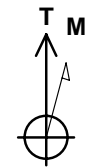
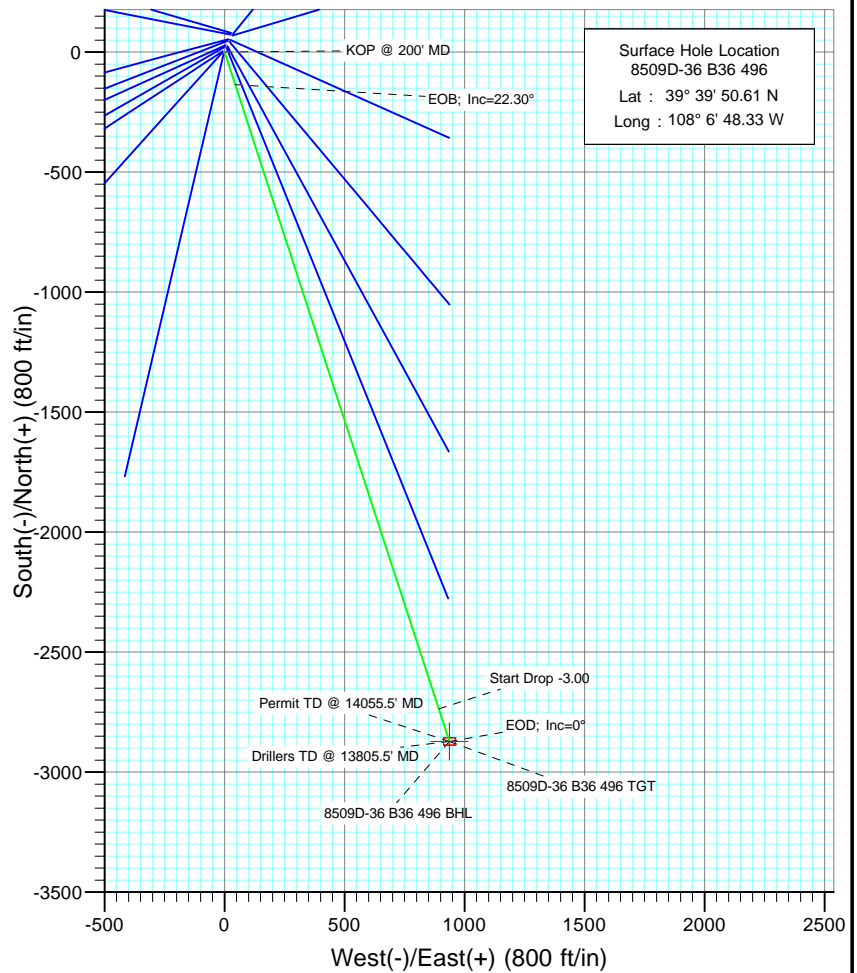




Project: Story Gulch
Site: S36-T4S-R96W (B36 496)
Well: 8509D-36 B36 496
Wellbore: DD
Design: Plan #1



SECTION DETAILS										
Sec	MD	Inc	Azi	TVD	+N/-S	+E/-W	DLeg	TFace	VSec	Target
1	0.0	0.00	0.00	0.0	0.0	0.0	0.00	0.00	0.0	
2	200.0	0.00	0.00	200.0	0.0	0.0	0.00	0.00	0.0	
3	943.4	22.30	161.93	924.8	-135.8	44.3	3.00	161.93	142.9	
4	8152.1	22.30	161.93	7594.2	-2736.5	892.9	0.00	0.00	2878.4	
5	8895.5	0.00	0.00	8319.0	-2872.3	937.2	3.00	180.00	3021.3	8509D-36 B36 496 TGT
6	12555.5	0.00	0.00	11979.0	-2872.3	937.2	0.00	0.00	3021.3	8509D-36 B36 496 BHL
7	13805.5	0.00	0.00	13229.0	-2872.3	937.2	0.00	0.00	3021.3	
8	14055.5	0.00	0.00	13479.0	-2872.3	937.2	0.00	0.00	3021.3	



Azimuths to True North
Magnetic North: 10.63°

Magnetic Field
Strength: 52514.2snT
Dip Angle: 65.91°
Date: 9/1/2009
Model: IGRF200510

FORMATION TOP DETAILS

TVDPath	MDPath	Formation
1579.0	1650.5	Mahog Bench
5179.0	5541.6	Was G
8279.0	8855.5	WF
8319.0	8895.5	TOG
8979.0	9555.5	Price_GR
11379.0	11955.5	Paludal
11979.0	12555.5	Rollins
12309.0	12885.5	Cozzette
12499.0	13075.5	Corcoran
12779.0	13355.5	Sego
12979.0	13555.5	L Sego

DESIGN DETAILS: Plan #1

95XXX: BH
KBE @ 8374.0ft (Original Well Elev)

Target	Azimuth	Origin Type/N/S	E/W	From TVD
8509D-36 B36 496 BHL	161.93	Slot	0.0	0.0

Directional Plus

Planning Report

Database:	EDM 2003.21 US Multi User Db	Local Co-ordinate Reference:	Well 8509D-36 B36 496
Company:	EnCana Oil & Gas (USA) Inc	TVD Reference:	KBE @ 8374.0ft (Original Well Elev)
Project:	Story Gulch	MD Reference:	KBE @ 8374.0ft (Original Well Elev)
Site:	S36-T4S-R96W (B36 496)	North Reference:	True
Well:	8509D-36 B36 496	Survey Calculation Method:	Minimum Curvature
Wellbore:	DD		
Design:	Plan #1		

Project	Story Gulch		
Map System:	US State Plane 1983	System Datum:	Mean Sea Level
Geo Datum:	North American Datum 1983		
Map Zone:	Colorado Central Zone		

Site		S36-T4S-R96W (B36 496)			
Site Position:		Northing:	1,677,422.27 ft	Latitude:	39° 39' 51.36 N
From:	Lat/Long	Easting:	2,264,394.80 ft	Longitude:	108° 6' 47.88 W
Position Uncertainty:	0.0 ft	Slot Radius:	in	Grid Convergence:	-1.65 °

Well	8509D-36 B36 496					
Well Position	+N/-S	0.0 ft	Northing:	1,677,347.12 ft	Latitude:	39° 39' 50.61 N
	+E/-W	0.0 ft	Easting:	2,264,356.98 ft	Longitude:	108° 6' 48.33 W
Position Uncertainty		0.0 ft	Wellhead Elevation:	ft	Ground Level:	8,352.0 ft

Wellbore	DD				
Magnetics	Model Name	Sample Date	Declination (°)	Dip Angle (°)	Field Strength (nT)
	IGRF200510	9/1/2009	10.63	65.91	52,514

Design	Plan #1			
Audit Notes:				
Version:	Phase:	PLAN	Tie On Depth:	0.0
Vertical Section:	Depth From (TVD) (ft)	+N/-S (ft)	+E/-W (ft)	Direction (°)
	0.0	0.0	0.0	161.93

Plan Sections										
Measured Depth (ft)	Inclination (°)	Azimuth (°)	Vertical Depth (ft)	+N/-S (ft)	+E/-W (ft)	Dogleg Rate (°/100ft)	Build Rate (°/100ft)	Turn Rate (°/100ft)	TFO (°)	Target
0.0	0.00	0.00	0.0	0.0	0.0	0.00	0.00	0.00	0.00	
200.0	0.00	0.00	200.0	0.0	0.0	0.00	0.00	0.00	0.00	
943.4	22.30	161.93	924.8	-135.8	44.3	3.00	3.00	0.00	161.93	
8,152.1	22.30	161.93	7,594.2	-2,736.5	892.9	0.00	0.00	0.00	0.00	
8,895.5	0.00	0.00	8,319.0	-2,872.3	937.2	3.00	-3.00	0.00	180.00	8509D-36 B36 496 TC
12,555.5	0.00	0.00	11,979.0	-2,872.3	937.2	0.00	0.00	0.00	0.00	8509D-36 B36 496 Bt
13,805.5	0.00	0.00	13,229.0	-2,872.3	937.2	0.00	0.00	0.00	0.00	
14,055.5	0.00	0.00	13,479.0	-2,872.3	937.2	0.00	0.00	0.00	0.00	

Directional Plus

Planning Report

Database:	EDM 2003.21 US Multi User Db	Local Co-ordinate Reference:	Well 8509D-36 B36 496
Company:	EnCana Oil & Gas (USA) Inc	TVD Reference:	KBE @ 8374.0ft (Original Well Elev)
Project:	Story Gulch	MD Reference:	KBE @ 8374.0ft (Original Well Elev)
Site:	S36-T4S-R96W (B36 496)	North Reference:	True
Well:	8509D-36 B36 496	Survey Calculation Method:	Minimum Curvature
Wellbore:	DD		
Design:	Plan #1		

Planned Survey

Measured Depth (ft)	Inclination (°)	Azimuth (°)	Vertical Depth (ft)	+N/-S (ft)	+E/-W (ft)	Vertical Section (ft)	Dogleg Rate (°/100ft)	Build Rate (°/100ft)	Comments / Formations
0.0	0.00	0.00	0.0	0.0	0.0	0.0	0.00	0.00	
100.0	0.00	0.00	100.0	0.0	0.0	0.0	0.00	0.00	
200.0	0.00	0.00	200.0	0.0	0.0	0.0	0.00	0.00	KOP @ 200' MD
300.0	3.00	161.93	300.0	-2.5	0.8	2.6	3.00	3.00	
400.0	6.00	161.93	399.6	-9.9	3.2	10.5	3.00	3.00	
500.0	9.00	161.93	498.8	-22.4	7.3	23.5	3.00	3.00	
600.0	12.00	161.93	597.1	-39.7	12.9	41.7	3.00	3.00	
700.0	15.00	161.93	694.3	-61.9	20.2	65.1	3.00	3.00	
800.0	18.00	161.93	790.2	-88.9	29.0	93.5	3.00	3.00	
900.0	21.00	161.93	884.4	-120.6	39.4	126.9	3.00	3.00	
943.4	22.30	161.93	924.8	-135.8	44.3	142.9	3.00	3.00	EOB; Inc=22.30°
1,000.0	22.30	161.93	977.1	-156.2	51.0	164.3	0.00	0.00	
1,100.0	22.30	161.93	1,069.7	-192.3	62.8	202.3	0.00	0.00	
1,200.0	22.30	161.93	1,162.2	-228.4	74.5	240.2	0.00	0.00	
1,300.0	22.30	161.93	1,254.7	-264.5	86.3	278.2	0.00	0.00	
1,400.0	22.30	161.93	1,347.2	-300.5	98.1	316.1	0.00	0.00	
1,500.0	22.30	161.93	1,439.7	-336.6	109.8	354.1	0.00	0.00	
1,600.0	22.30	161.93	1,532.3	-372.7	121.6	392.0	0.00	0.00	
1,650.5	22.30	161.93	1,579.0	-390.9	127.6	411.2	0.00	0.00	Mahog Bench
1,700.0	22.30	161.93	1,624.8	-408.8	133.4	430.0	0.00	0.00	
1,800.0	22.30	161.93	1,717.3	-444.8	145.2	467.9	0.00	0.00	
1,900.0	22.30	161.93	1,809.8	-480.9	156.9	505.9	0.00	0.00	
2,000.0	22.30	161.93	1,902.3	-517.0	168.7	543.8	0.00	0.00	
2,100.0	22.30	161.93	1,994.9	-553.1	180.5	581.8	0.00	0.00	
2,200.0	22.30	161.93	2,087.4	-589.2	192.2	619.7	0.00	0.00	
2,300.0	22.30	161.93	2,179.9	-625.2	204.0	657.7	0.00	0.00	
2,400.0	22.30	161.93	2,272.4	-661.3	215.8	695.6	0.00	0.00	
2,500.0	22.30	161.93	2,364.9	-697.4	227.6	733.6	0.00	0.00	
2,600.0	22.30	161.93	2,457.5	-733.5	239.3	771.5	0.00	0.00	
2,700.0	22.30	161.93	2,550.0	-769.5	251.1	809.5	0.00	0.00	
2,800.0	22.30	161.93	2,642.5	-805.6	262.9	847.4	0.00	0.00	
2,900.0	22.30	161.93	2,735.0	-841.7	274.6	885.4	0.00	0.00	
3,000.0	22.30	161.93	2,827.5	-877.8	286.4	923.3	0.00	0.00	
3,100.0	22.30	161.93	2,920.1	-913.8	298.2	961.3	0.00	0.00	
3,200.0	22.30	161.93	3,012.6	-949.9	310.0	999.2	0.00	0.00	
3,300.0	22.30	161.93	3,105.1	-986.0	321.7	1,037.2	0.00	0.00	
3,400.0	22.30	161.93	3,197.6	-1,022.1	333.5	1,075.1	0.00	0.00	
3,500.0	22.30	161.93	3,290.1	-1,058.1	345.3	1,113.1	0.00	0.00	
3,600.0	22.30	161.93	3,382.7	-1,094.2	357.0	1,151.0	0.00	0.00	
3,700.0	22.30	161.93	3,475.2	-1,130.3	368.8	1,189.0	0.00	0.00	
3,800.0	22.30	161.93	3,567.7	-1,166.4	380.6	1,226.9	0.00	0.00	
3,900.0	22.30	161.93	3,660.2	-1,202.5	392.4	1,264.8	0.00	0.00	
4,000.0	22.30	161.93	3,752.7	-1,238.5	404.1	1,302.8	0.00	0.00	
4,100.0	22.30	161.93	3,845.3	-1,274.6	415.9	1,340.7	0.00	0.00	
4,200.0	22.30	161.93	3,937.8	-1,310.7	427.7	1,378.7	0.00	0.00	
4,300.0	22.30	161.93	4,030.3	-1,346.8	439.4	1,416.6	0.00	0.00	
4,400.0	22.30	161.93	4,122.8	-1,382.8	451.2	1,454.6	0.00	0.00	
4,500.0	22.30	161.93	4,215.3	-1,418.9	463.0	1,492.5	0.00	0.00	
4,600.0	22.30	161.93	4,307.8	-1,455.0	474.8	1,530.5	0.00	0.00	
4,700.0	22.30	161.93	4,400.4	-1,491.1	486.5	1,568.4	0.00	0.00	
4,800.0	22.30	161.93	4,492.9	-1,527.1	498.3	1,606.4	0.00	0.00	
4,900.0	22.30	161.93	4,585.4	-1,563.2	510.1	1,644.3	0.00	0.00	

Directional Plus

Planning Report

Database:	EDM 2003.21 US Multi User Db	Local Co-ordinate Reference:	Well 8509D-36 B36 496
Company:	EnCana Oil & Gas (USA) Inc	TVD Reference:	KBE @ 8374.0ft (Original Well Elev)
Project:	Story Gulch	MD Reference:	KBE @ 8374.0ft (Original Well Elev)
Site:	S36-T4S-R96W (B36 496)	North Reference:	True
Well:	8509D-36 B36 496	Survey Calculation Method:	Minimum Curvature
Wellbore:	DD		
Design:	Plan #1		

Planned Survey

Measured Depth (ft)	Inclination (°)	Azimuth (°)	Vertical Depth (ft)	+N/-S (ft)	+E/-W (ft)	Vertical Section (ft)	Dogleg Rate (°/100ft)	Build Rate (°/100ft)	Comments / Formations
5,000.0	22.30	161.93	4,677.9	-1,599.3	521.9	1,682.3	0.00	0.00	
5,100.0	22.30	161.93	4,770.4	-1,635.4	533.6	1,720.2	0.00	0.00	
5,200.0	22.30	161.93	4,863.0	-1,671.4	545.4	1,758.2	0.00	0.00	
5,300.0	22.30	161.93	4,955.5	-1,707.5	557.2	1,796.1	0.00	0.00	
5,400.0	22.30	161.93	5,048.0	-1,743.6	568.9	1,834.1	0.00	0.00	
5,500.0	22.30	161.93	5,140.5	-1,779.7	580.7	1,872.0	0.00	0.00	
5,541.6	22.30	161.93	5,179.0	-1,794.7	585.6	1,887.8	0.00	0.00	Was G
5,600.0	22.30	161.93	5,233.0	-1,815.8	592.5	1,910.0	0.00	0.00	
5,700.0	22.30	161.93	5,325.6	-1,851.8	604.3	1,947.9	0.00	0.00	
5,800.0	22.30	161.93	5,418.1	-1,887.9	616.0	1,985.9	0.00	0.00	
5,900.0	22.30	161.93	5,510.6	-1,924.0	627.8	2,023.8	0.00	0.00	
6,000.0	22.30	161.93	5,603.1	-1,960.1	639.6	2,061.8	0.00	0.00	
6,100.0	22.30	161.93	5,695.6	-1,996.1	651.3	2,099.7	0.00	0.00	
6,200.0	22.30	161.93	5,788.2	-2,032.2	663.1	2,137.7	0.00	0.00	
6,300.0	22.30	161.93	5,880.7	-2,068.3	674.9	2,175.6	0.00	0.00	
6,400.0	22.30	161.93	5,973.2	-2,104.4	686.7	2,213.6	0.00	0.00	
6,500.0	22.30	161.93	6,065.7	-2,140.4	698.4	2,251.5	0.00	0.00	
6,600.0	22.30	161.93	6,158.2	-2,176.5	710.2	2,289.5	0.00	0.00	
6,700.0	22.30	161.93	6,250.8	-2,212.6	722.0	2,327.4	0.00	0.00	
6,800.0	22.30	161.93	6,343.3	-2,248.7	733.7	2,365.4	0.00	0.00	
6,900.0	22.30	161.93	6,435.8	-2,284.7	745.5	2,403.3	0.00	0.00	
7,000.0	22.30	161.93	6,528.3	-2,320.8	757.3	2,441.2	0.00	0.00	
7,100.0	22.30	161.93	6,620.8	-2,356.9	769.1	2,479.2	0.00	0.00	
7,200.0	22.30	161.93	6,713.4	-2,393.0	780.8	2,517.1	0.00	0.00	
7,300.0	22.30	161.93	6,805.9	-2,429.1	792.6	2,555.1	0.00	0.00	
7,400.0	22.30	161.93	6,898.4	-2,465.1	804.4	2,593.0	0.00	0.00	
7,500.0	22.30	161.93	6,990.9	-2,501.2	816.1	2,631.0	0.00	0.00	
7,600.0	22.30	161.93	7,083.4	-2,537.3	827.9	2,668.9	0.00	0.00	
7,700.0	22.30	161.93	7,176.0	-2,573.4	839.7	2,706.9	0.00	0.00	
7,800.0	22.30	161.93	7,268.5	-2,609.4	851.5	2,744.8	0.00	0.00	
7,900.0	22.30	161.93	7,361.0	-2,645.5	863.2	2,782.8	0.00	0.00	
8,000.0	22.30	161.93	7,453.5	-2,681.6	875.0	2,820.7	0.00	0.00	
8,100.0	22.30	161.93	7,546.0	-2,717.7	886.8	2,858.7	0.00	0.00	
8,152.1	22.30	161.93	7,594.2	-2,736.5	892.9	2,878.4	0.00	0.00	Start Drop -3.00
8,200.0	20.86	161.93	7,638.8	-2,753.2	898.4	2,896.1	3.00	-3.00	
8,300.0	17.86	161.93	7,733.1	-2,784.7	908.7	2,929.2	3.00	-3.00	
8,400.0	14.86	161.93	7,829.1	-2,811.5	917.4	2,957.4	3.00	-3.00	
8,500.0	11.86	161.93	7,926.3	-2,833.5	924.6	2,980.5	3.00	-3.00	
8,600.0	8.86	161.93	8,024.7	-2,850.6	930.1	2,998.5	3.00	-3.00	
8,700.0	5.86	161.93	8,123.9	-2,862.8	934.1	3,011.3	3.00	-3.00	
8,800.0	2.86	161.93	8,223.6	-2,870.0	936.5	3,018.9	3.00	-3.00	
8,855.5	1.20	161.93	8,279.0	-2,871.9	937.1	3,020.9	3.00	-3.00	WF
8,895.5	0.00	0.00	8,319.0	-2,872.3	937.2	3,021.3	3.00	-3.00	EOD; Inc=0° - TOG - 8509D-36 B36 496 TGT
8,900.0	0.00	0.00	8,323.5	-2,872.3	937.2	3,021.3	0.00	0.00	
9,000.0	0.00	0.00	8,423.5	-2,872.3	937.2	3,021.3	0.00	0.00	
9,100.0	0.00	0.00	8,523.5	-2,872.3	937.2	3,021.3	0.00	0.00	
9,200.0	0.00	0.00	8,623.5	-2,872.3	937.2	3,021.3	0.00	0.00	
9,300.0	0.00	0.00	8,723.5	-2,872.3	937.2	3,021.3	0.00	0.00	
9,400.0	0.00	0.00	8,823.5	-2,872.3	937.2	3,021.3	0.00	0.00	
9,500.0	0.00	0.00	8,923.5	-2,872.3	937.2	3,021.3	0.00	0.00	
9,555.5	0.00	0.00	8,979.0	-2,872.3	937.2	3,021.3	0.00	0.00	Price_GR
9,600.0	0.00	0.00	9,023.5	-2,872.3	937.2	3,021.3	0.00	0.00	

Directional Plus

Planning Report

Database:	EDM 2003.21 US Multi User Db	Local Co-ordinate Reference:	Well 8509D-36 B36 496
Company:	EnCana Oil & Gas (USA) Inc	TVD Reference:	KBE @ 8374.0ft (Original Well Elev)
Project:	Story Gulch	MD Reference:	KBE @ 8374.0ft (Original Well Elev)
Site:	S36-T4S-R96W (B36 496)	North Reference:	True
Well:	8509D-36 B36 496	Survey Calculation Method:	Minimum Curvature
Wellbore:	DD		
Design:	Plan #1		

Planned Survey									
Measured Depth (ft)	Inclination (°)	Azimuth (°)	Vertical Depth (ft)	+N/-S (ft)	+E/-W (ft)	Vertical Section (ft)	Dogleg Rate (°/100ft)	Build Rate (°/100ft)	Comments / Formations
9,700.0	0.00	0.00	9,123.5	-2,872.3	937.2	3,021.3	0.00	0.00	
9,800.0	0.00	0.00	9,223.5	-2,872.3	937.2	3,021.3	0.00	0.00	
9,900.0	0.00	0.00	9,323.5	-2,872.3	937.2	3,021.3	0.00	0.00	
10,000.0	0.00	0.00	9,423.5	-2,872.3	937.2	3,021.3	0.00	0.00	
10,100.0	0.00	0.00	9,523.5	-2,872.3	937.2	3,021.3	0.00	0.00	
10,200.0	0.00	0.00	9,623.5	-2,872.3	937.2	3,021.3	0.00	0.00	
10,300.0	0.00	0.00	9,723.5	-2,872.3	937.2	3,021.3	0.00	0.00	
10,400.0	0.00	0.00	9,823.5	-2,872.3	937.2	3,021.3	0.00	0.00	
10,500.0	0.00	0.00	9,923.5	-2,872.3	937.2	3,021.3	0.00	0.00	
10,600.0	0.00	0.00	10,023.5	-2,872.3	937.2	3,021.3	0.00	0.00	
10,700.0	0.00	0.00	10,123.5	-2,872.3	937.2	3,021.3	0.00	0.00	
10,800.0	0.00	0.00	10,223.5	-2,872.3	937.2	3,021.3	0.00	0.00	
10,900.0	0.00	0.00	10,323.5	-2,872.3	937.2	3,021.3	0.00	0.00	
11,000.0	0.00	0.00	10,423.5	-2,872.3	937.2	3,021.3	0.00	0.00	
11,100.0	0.00	0.00	10,523.5	-2,872.3	937.2	3,021.3	0.00	0.00	
11,200.0	0.00	0.00	10,623.5	-2,872.3	937.2	3,021.3	0.00	0.00	
11,300.0	0.00	0.00	10,723.5	-2,872.3	937.2	3,021.3	0.00	0.00	
11,400.0	0.00	0.00	10,823.5	-2,872.3	937.2	3,021.3	0.00	0.00	
11,500.0	0.00	0.00	10,923.5	-2,872.3	937.2	3,021.3	0.00	0.00	
11,600.0	0.00	0.00	11,023.5	-2,872.3	937.2	3,021.3	0.00	0.00	
11,700.0	0.00	0.00	11,123.5	-2,872.3	937.2	3,021.3	0.00	0.00	
11,800.0	0.00	0.00	11,223.5	-2,872.3	937.2	3,021.3	0.00	0.00	
11,900.0	0.00	0.00	11,323.5	-2,872.3	937.2	3,021.3	0.00	0.00	
11,955.5	0.00	0.00	11,379.0	-2,872.3	937.2	3,021.3	0.00	0.00	Paludal
12,000.0	0.00	0.00	11,423.5	-2,872.3	937.2	3,021.3	0.00	0.00	
12,100.0	0.00	0.00	11,523.5	-2,872.3	937.2	3,021.3	0.00	0.00	
12,200.0	0.00	0.00	11,623.5	-2,872.3	937.2	3,021.3	0.00	0.00	
12,300.0	0.00	0.00	11,723.5	-2,872.3	937.2	3,021.3	0.00	0.00	
12,400.0	0.00	0.00	11,823.5	-2,872.3	937.2	3,021.3	0.00	0.00	
12,500.0	0.00	0.00	11,923.5	-2,872.3	937.2	3,021.3	0.00	0.00	
12,555.5	0.00	0.00	11,979.0	-2,872.3	937.2	3,021.3	0.00	0.00	Rollins - 8509D-36 B36 496 BHL
12,600.0	0.00	0.00	12,023.5	-2,872.3	937.2	3,021.3	0.00	0.00	
12,700.0	0.00	0.00	12,123.5	-2,872.3	937.2	3,021.3	0.00	0.00	
12,800.0	0.00	0.00	12,223.5	-2,872.3	937.2	3,021.3	0.00	0.00	
12,885.5	0.00	0.00	12,309.0	-2,872.3	937.2	3,021.3	0.00	0.00	Cozzette
12,900.0	0.00	0.00	12,323.5	-2,872.3	937.2	3,021.3	0.00	0.00	
13,000.0	0.00	0.00	12,423.5	-2,872.3	937.2	3,021.3	0.00	0.00	
13,075.5	0.00	0.00	12,499.0	-2,872.3	937.2	3,021.3	0.00	0.00	Corcoran
13,100.0	0.00	0.00	12,523.5	-2,872.3	937.2	3,021.3	0.00	0.00	
13,200.0	0.00	0.00	12,623.5	-2,872.3	937.2	3,021.3	0.00	0.00	
13,300.0	0.00	0.00	12,723.5	-2,872.3	937.2	3,021.3	0.00	0.00	
13,355.5	0.00	0.00	12,779.0	-2,872.3	937.2	3,021.3	0.00	0.00	Sego
13,400.0	0.00	0.00	12,823.5	-2,872.3	937.2	3,021.3	0.00	0.00	
13,500.0	0.00	0.00	12,923.5	-2,872.3	937.2	3,021.3	0.00	0.00	
13,555.5	0.00	0.00	12,979.0	-2,872.3	937.2	3,021.3	0.00	0.00	L Sego
13,600.0	0.00	0.00	13,023.5	-2,872.3	937.2	3,021.3	0.00	0.00	
13,700.0	0.00	0.00	13,123.5	-2,872.3	937.2	3,021.3	0.00	0.00	
13,800.0	0.00	0.00	13,223.5	-2,872.3	937.2	3,021.3	0.00	0.00	
13,805.5	0.00	0.00	13,229.0	-2,872.3	937.2	3,021.3	0.00	0.00	Drillers TD @ 13805.5' MD
13,900.0	0.00	0.00	13,323.5	-2,872.3	937.2	3,021.3	0.00	0.00	
14,000.0	0.00	0.00	13,423.5	-2,872.3	937.2	3,021.3	0.00	0.00	
14,055.5	0.00	0.00	13,479.0	-2,872.3	937.2	3,021.3	0.00	0.00	

Directional Plus

Planning Report

Database:	EDM 2003.21 US Multi User Db	Local Co-ordinate Reference:	Well 8509D-36 B36 496
Company:	EnCana Oil & Gas (USA) Inc	TVD Reference:	KBE @ 8374.0ft (Original Well Elev)
Project:	Story Gulch	MD Reference:	KBE @ 8374.0ft (Original Well Elev)
Site:	S36-T4S-R96W (B36 496)	North Reference:	True
Well:	8509D-36 B36 496	Survey Calculation Method:	Minimum Curvature
Wellbore:	DD		
Design:	Plan #1		

Planned Survey									
Measured Depth (ft)	Inclination (°)	Azimuth (°)	Vertical Depth (ft)	+N/-S (ft)	+E/-W (ft)	Vertical Section (ft)	Dogleg Rate (°/100ft)	Build Rate (°/100ft)	Comments / Formations

Targets									
Target Name	Dip Angle (°)	Dip Dir. (°)	TVD (ft)	+N/-S (ft)	+E/-W (ft)	Northing (ft)	Easting (ft)	Latitude	Longitude
8509D-36 B36 496 BHL - hit/miss target - Shape - plan hits target center - Rectangle (sides W30.0 H50.0 D0.0)	0.00	0.00	11,979.0	-2,872.3	937.2	1,674,449.08	2,265,211.20	39° 39' 22.22 N	108° 6' 36.35 W
8509D-36 B36 496 TGT - plan hits target center - Point	0.00	0.00	8,319.0	-2,872.3	937.2	1,674,449.08	2,265,211.20	39° 39' 22.22 N	108° 6' 36.35 W

Formations						
Measured Depth (ft)	Vertical Depth (ft)	Name	Lithology	Dip (°)	Dip Direction (°)	
1,650.5	1,579.0	Mahog Bench		0.00		
5,541.6	5,179.0	Was G		0.00		
8,855.5	8,279.0	WF		0.00		
8,895.5	8,319.0	TOG		0.00		
9,555.5	8,979.0	Price_GR		0.00		
11,955.5	11,379.0	Paludal		0.00		
12,555.5	11,979.0	Rollins		0.00		
12,885.5	12,309.0	Cozzette		0.00		
13,075.5	12,499.0	Corcoran		0.00		
13,355.5	12,779.0	Sego		0.00		
13,555.5	12,979.0	L Sego		0.00		

Plan Annotations					
Measured Depth (ft)	Vertical Depth (ft)	Local Coordinates			
		+N/-S (ft)	+E/-W (ft)	Comment	
200.0	200.0	0.0	0.0	KOP @ 200' MD	
943.4	924.8	-135.8	44.3	EOB; Inc=22.30°	
8,152.1	7,594.2	-2,736.5	892.9	Start Drop -3.00	
8,895.5	8,319.0	-2,872.3	937.2	EOD; Inc=0°	
13,805.5	13,229.0	-2,872.3	937.2	Drillers TD @ 13805.5' MD	
14,055.5	13,479.0	-2,872.3	937.2	Permit TD @ 14055.5' MD	