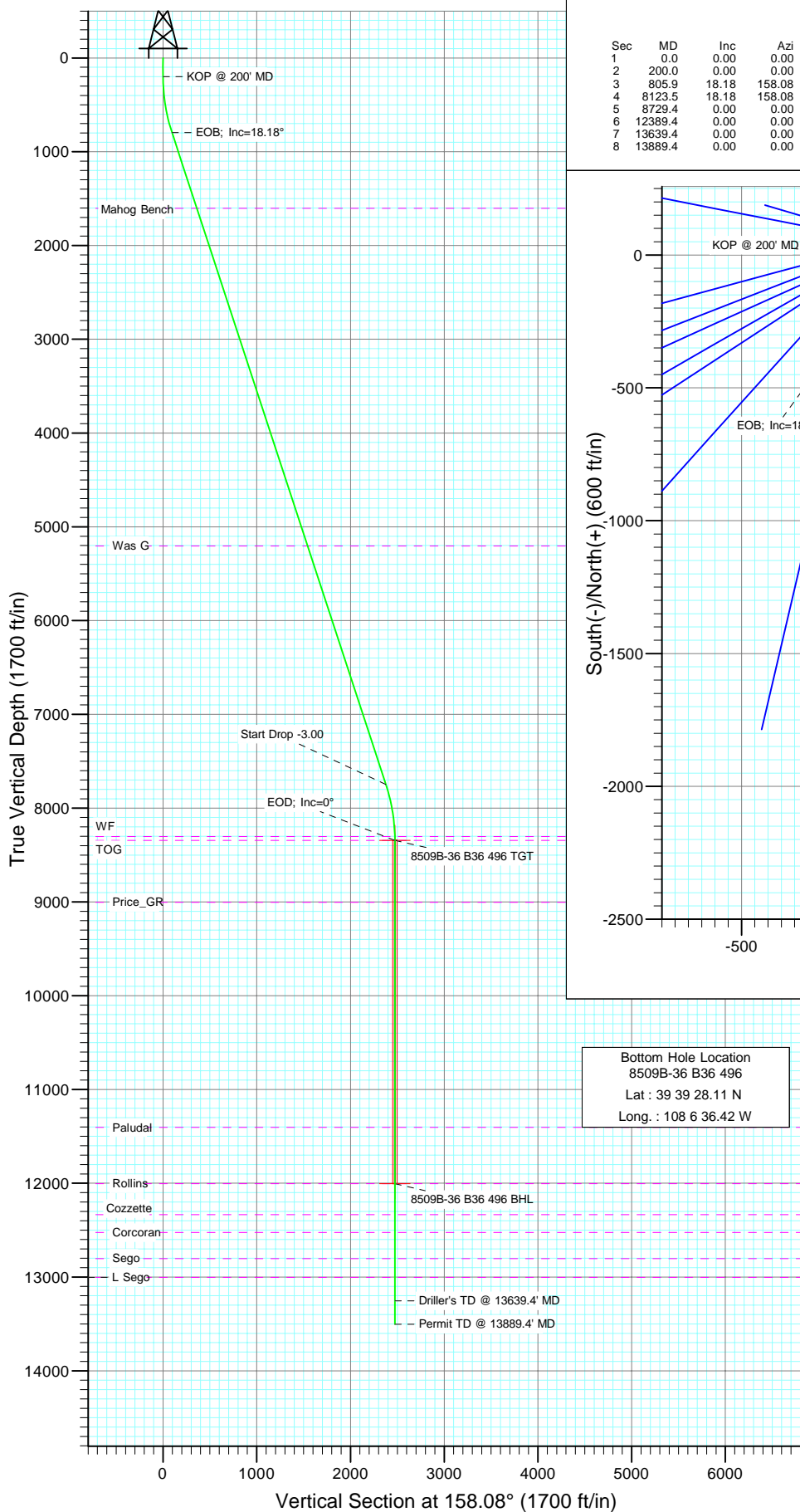
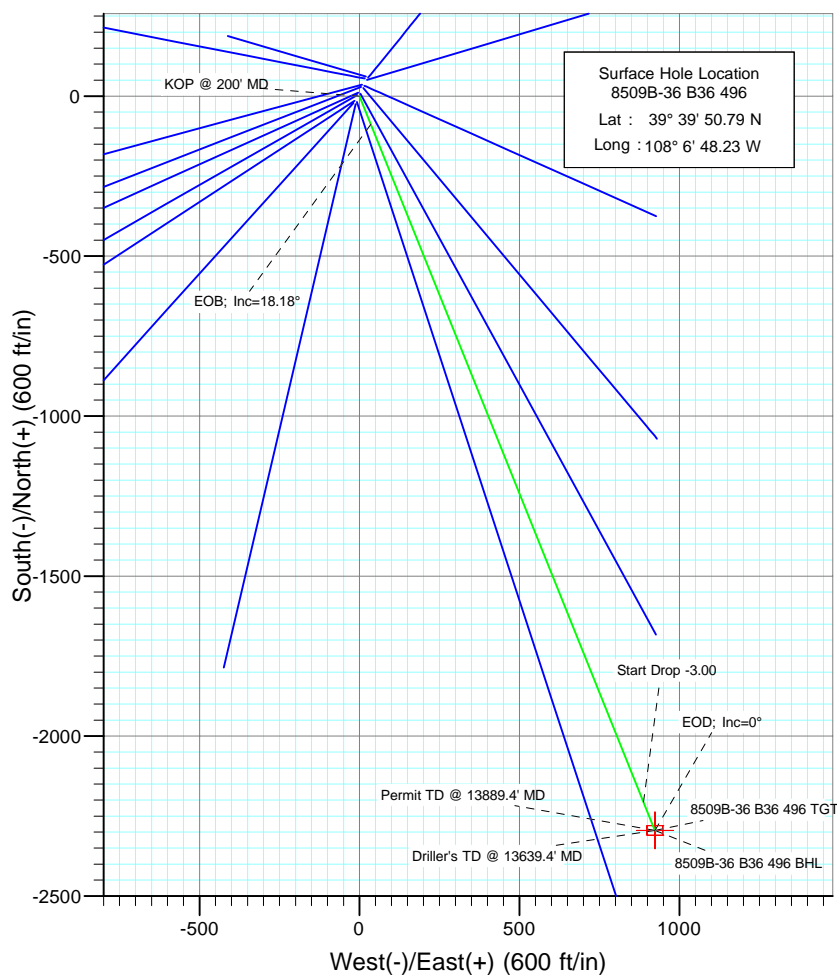




Project: Story Gulch  
 Site: S36-T4S-R96W (B36 496)  
 Well: 8509B-36 B36 496  
 Wellbore: DD  
 Design: Plan #1



Sec	MD	Inc	Azi	TVD	+N/-S	+E/-W	DLeg	TFace	VSec	Target
1	0.0	0.00	0.00	0.0	0.0	0.0	0.00	0.00	0.0	
2	200.0	0.00	0.00	200.0	0.0	0.0	0.00	0.00	0.0	
3	805.9	18.18	158.08	795.8	-88.4	35.6	3.00	158.08	95.3	
4	8123.5	18.18	158.08	7748.2	-2206.2	887.7	0.00	0.00	2378.1	
5	8729.4	0.00	0.00	8344.0	-2294.6	923.3	3.00	180.00	2473.4	8509B-36 B36 496 TGT
6	12389.4	0.00	0.00	12004.0	-2294.6	923.3	0.00	0.00	2473.4	8509B-36 B36 496 BHL
7	13639.4	0.00	0.00	13254.0	-2294.6	923.3	0.00	0.00	2473.4	
8	13889.4	0.00	0.00	13504.0	-2294.6	923.3	0.00	0.00	2473.4	



Azimuths to True North  
 Magnetic North: 10.64°

Magnetic Field  
 Strength: 52515.8nT  
 Dip Angle: 65.91°  
 Date: 8/26/2009  
 Model: IGRF200510

#### FORMATION TOP DETAILS

TVDPath	MDPath	Formation
1604.0	1656.6	Mahog Bench
5204.0	5445.6	Was G
8304.0	8689.4	WF
8344.0	8729.4	TOG
9004.0	9389.4	Price_GR
11404.0	11789.4	Paludal
12004.0	12389.4	Rollins
12334.0	12719.4	Cozzette
12524.0	12909.4	Corcoran
12804.0	13189.4	Sego
13004.0	13389.4	L Sego

#### DESIGN DETAILS: Plan #1

95XXX: BH  
 KBE @ 8374.0ft (Original Well Elev)

Target	Azimuth	Origin	Typ	N/S	E/W	From	TVD
8509B-36 B36 496 BHL	158.08	Slot	0.0	0.0	0.0	0.0	0.0

# Directional Plus

## Planning Report

<b>Database:</b>	EDM 2003.21 US Multi User Db	<b>Local Co-ordinate Reference:</b>	Well 8509B-36 B36 496
<b>Company:</b>	EnCana Oil & Gas (USA) Inc	<b>TVD Reference:</b>	KBE @ 8374.0ft (Original Well Elev)
<b>Project:</b>	Story Gulch	<b>MD Reference:</b>	KBE @ 8374.0ft (Original Well Elev)
<b>Site:</b>	S36-T4S-R96W (B36 496)	<b>North Reference:</b>	True
<b>Well:</b>	8509B-36 B36 496	<b>Survey Calculation Method:</b>	Minimum Curvature
<b>Wellbore:</b>	DD		
<b>Design:</b>	Plan #1		

<b>Project</b>	Story Gulch		
<b>Map System:</b>	US State Plane 1983	<b>System Datum:</b>	Mean Sea Level
<b>Geo Datum:</b>	North American Datum 1983		
<b>Map Zone:</b>	Colorado Central Zone		

Site		S36-T4S-R96W (B36 496)			
Site Position:		Northing:	1,677,422.27 ft	Latitude:	39° 39' 51.36 N
From:	Lat/Long	Easting:	2,264,394.80 ft	Longitude:	108° 6' 47.88 W
Position Uncertainty:	0.0 ft	Slot Radius:	in	Grid Convergence:	-1.65 °

Well	8509B-36 B36 496					
Well Position	+N/-S	0.0 ft	Northing:	1,677,365.15 ft	Latitude:	39° 39' 50.79 N
	+E/-W	0.0 ft	Easting:	2,264,365.96 ft	Longitude:	108° 6' 48.23 W
Position Uncertainty		0.0 ft	Wellhead Elevation:	ft	Ground Level:	8,352.0 ft

<b>Wellbore</b>	DD				
<b>Magnetics</b>	<b>Model Name</b>	<b>Sample Date</b>	<b>Declination</b>	<b>Dip Angle</b>	<b>Field Strength</b>
			(°)	(°)	(nT)
	IGRF200510	8/26/2009	10.64	65.91	52,516

<b>Design</b>	Plan #1			
<b>Audit Notes:</b>				
<b>Version:</b>	<b>Phase:</b>	PLAN	<b>Tie On Depth:</b>	0.0
<b>Vertical Section:</b>	<b>Depth From (TVD)</b>	<b>+N/-S</b>	<b>+E/-W</b>	<b>Direction</b>
	(ft)	(ft)	(ft)	(°)
	0.0	0.0	0.0	158.08

<b>Plan Sections</b>										
Measured Depth (ft)	Inclination (°)	Azimuth (°)	Vertical Depth (ft)	+N/-S (ft)	+E/-W (ft)	Dogleg Rate (°/100ft)	Build Rate (°/100ft)	Turn Rate (°/100ft)	TFO (°)	Target
0.0	0.00	0.00	0.0	0.0	0.0	0.00	0.00	0.00	0.00	
200.0	0.00	0.00	200.0	0.0	0.0	0.00	0.00	0.00	0.00	
805.9	18.18	158.08	795.8	-88.4	35.6	3.00	3.00	0.00	158.08	
8,123.5	18.18	158.08	7,748.2	-2,206.2	887.7	0.00	0.00	0.00	0.00	
8,729.4	0.00	0.00	8,344.0	-2,294.6	923.3	3.00	-3.00	0.00	180.00	8509B-36 B36 496 TC
12,389.4	0.00	0.00	12,004.0	-2,294.6	923.3	0.00	0.00	0.00	0.00	8509B-36 B36 496 BT
13,639.4	0.00	0.00	13,254.0	-2,294.6	923.3	0.00	0.00	0.00	0.00	
13,889.4	0.00	0.00	13,504.0	-2,294.6	923.3	0.00	0.00	0.00	0.00	

# Directional Plus

## Planning Report

<b>Database:</b>	EDM 2003.21 US Multi User Db	<b>Local Co-ordinate Reference:</b>	Well 8509B-36 B36 496
<b>Company:</b>	EnCana Oil & Gas (USA) Inc	<b>TVD Reference:</b>	KBE @ 8374.0ft (Original Well Elev)
<b>Project:</b>	Story Gulch	<b>MD Reference:</b>	KBE @ 8374.0ft (Original Well Elev)
<b>Site:</b>	S36-T4S-R96W (B36 496)	<b>North Reference:</b>	True
<b>Well:</b>	8509B-36 B36 496	<b>Survey Calculation Method:</b>	Minimum Curvature
<b>Wellbore:</b>	DD		
<b>Design:</b>	Plan #1		

### Planned Survey

Measured Depth (ft)	Inclination (°)	Azimuth (°)	Vertical Depth (ft)	+N/-S (ft)	+E/-W (ft)	Vertical Section (ft)	Dogleg Rate (°/100ft)	Build Rate (°/100ft)	Comments / Formations
0.0	0.00	0.00	0.0	0.0	0.0	0.0	0.00	0.00	
100.0	0.00	0.00	100.0	0.0	0.0	0.0	0.00	0.00	
200.0	0.00	0.00	200.0	0.0	0.0	0.0	0.00	0.00	KOP @ 200' MD
300.0	3.00	158.08	300.0	-2.4	1.0	2.6	3.00	3.00	
400.0	6.00	158.08	399.6	-9.7	3.9	10.5	3.00	3.00	
500.0	9.00	158.08	498.8	-21.8	8.8	23.5	3.00	3.00	
600.0	12.00	158.08	597.1	-38.7	15.6	41.7	3.00	3.00	
700.0	15.00	158.08	694.3	-60.4	24.3	65.1	3.00	3.00	
800.0	18.00	158.08	790.2	-86.7	34.9	93.5	3.00	3.00	
805.9	18.18	158.08	795.8	-88.4	35.6	95.3	3.00	3.00	EOB; Inc=18.18°
900.0	18.18	158.08	885.2	-115.7	46.5	124.7	0.00	0.00	
1,000.0	18.18	158.08	980.2	-144.6	58.2	155.9	0.00	0.00	
1,100.0	18.18	158.08	1,075.2	-173.5	69.8	187.1	0.00	0.00	
1,200.0	18.18	158.08	1,170.2	-202.5	81.5	218.2	0.00	0.00	
1,300.0	18.18	158.08	1,265.2	-231.4	93.1	249.4	0.00	0.00	
1,400.0	18.18	158.08	1,360.2	-260.4	104.8	280.6	0.00	0.00	
1,500.0	18.18	158.08	1,455.3	-289.3	116.4	311.8	0.00	0.00	
1,600.0	18.18	158.08	1,550.3	-318.2	128.0	343.0	0.00	0.00	
1,656.6	18.18	158.08	1,604.0	-334.6	134.6	360.7	0.00	0.00	Mahog Bench
1,700.0	18.18	158.08	1,645.3	-347.2	139.7	374.2	0.00	0.00	
1,800.0	18.18	158.08	1,740.3	-376.1	151.3	405.4	0.00	0.00	
1,900.0	18.18	158.08	1,835.3	-405.1	163.0	436.6	0.00	0.00	
2,000.0	18.18	158.08	1,930.3	-434.0	174.6	467.8	0.00	0.00	
2,100.0	18.18	158.08	2,025.3	-462.9	186.3	499.0	0.00	0.00	
2,200.0	18.18	158.08	2,120.3	-491.9	197.9	530.2	0.00	0.00	
2,300.0	18.18	158.08	2,215.3	-520.8	209.6	561.4	0.00	0.00	
2,400.0	18.18	158.08	2,310.3	-549.8	221.2	592.6	0.00	0.00	
2,500.0	18.18	158.08	2,405.3	-578.7	232.9	623.8	0.00	0.00	
2,600.0	18.18	158.08	2,500.4	-607.6	244.5	655.0	0.00	0.00	
2,700.0	18.18	158.08	2,595.4	-636.6	256.1	686.2	0.00	0.00	
2,800.0	18.18	158.08	2,690.4	-665.5	267.8	717.4	0.00	0.00	
2,900.0	18.18	158.08	2,785.4	-694.5	279.4	748.6	0.00	0.00	
3,000.0	18.18	158.08	2,880.4	-723.4	291.1	779.8	0.00	0.00	
3,100.0	18.18	158.08	2,975.4	-752.3	302.7	811.0	0.00	0.00	
3,200.0	18.18	158.08	3,070.4	-781.3	314.4	842.2	0.00	0.00	
3,300.0	18.18	158.08	3,165.4	-810.2	326.0	873.3	0.00	0.00	
3,400.0	18.18	158.08	3,260.4	-839.2	337.7	904.5	0.00	0.00	
3,500.0	18.18	158.08	3,355.4	-868.1	349.3	935.7	0.00	0.00	
3,600.0	18.18	158.08	3,450.5	-897.0	360.9	966.9	0.00	0.00	
3,700.0	18.18	158.08	3,545.5	-926.0	372.6	998.1	0.00	0.00	
3,800.0	18.18	158.08	3,640.5	-954.9	384.2	1,029.3	0.00	0.00	
3,900.0	18.18	158.08	3,735.5	-983.9	395.9	1,060.5	0.00	0.00	
4,000.0	18.18	158.08	3,830.5	-1,012.8	407.5	1,091.7	0.00	0.00	
4,100.0	18.18	158.08	3,925.5	-1,041.7	419.2	1,122.9	0.00	0.00	
4,200.0	18.18	158.08	4,020.5	-1,070.7	430.8	1,154.1	0.00	0.00	
4,300.0	18.18	158.08	4,115.5	-1,099.6	442.5	1,185.3	0.00	0.00	
4,400.0	18.18	158.08	4,210.5	-1,128.6	454.1	1,216.5	0.00	0.00	
4,500.0	18.18	158.08	4,305.5	-1,157.5	465.7	1,247.7	0.00	0.00	
4,600.0	18.18	158.08	4,400.6	-1,186.4	477.4	1,278.9	0.00	0.00	
4,700.0	18.18	158.08	4,495.6	-1,215.4	489.0	1,310.1	0.00	0.00	
4,800.0	18.18	158.08	4,590.6	-1,244.3	500.7	1,341.3	0.00	0.00	
4,900.0	18.18	158.08	4,685.6	-1,273.3	512.3	1,372.5	0.00	0.00	

# Directional Plus

## Planning Report

<b>Database:</b>	EDM 2003.21 US Multi User Db	<b>Local Co-ordinate Reference:</b>	Well 8509B-36 B36 496
<b>Company:</b>	EnCana Oil & Gas (USA) Inc	<b>TVD Reference:</b>	KBE @ 8374.0ft (Original Well Elev)
<b>Project:</b>	Story Gulch	<b>MD Reference:</b>	KBE @ 8374.0ft (Original Well Elev)
<b>Site:</b>	S36-T4S-R96W (B36 496)	<b>North Reference:</b>	True
<b>Well:</b>	8509B-36 B36 496	<b>Survey Calculation Method:</b>	Minimum Curvature
<b>Wellbore:</b>	DD		
<b>Design:</b>	Plan #1		

### Planned Survey

Measured Depth (ft)	Inclination (°)	Azimuth (°)	Vertical Depth (ft)	+N/-S (ft)	+E/-W (ft)	Vertical Section (ft)	Dogleg Rate (°/100ft)	Build Rate (°/100ft)	Comments / Formations
5,000.0	18.18	158.08	4,780.6	-1,302.2	524.0	1,403.7	0.00	0.00	
5,100.0	18.18	158.08	4,875.6	-1,331.1	535.6	1,434.9	0.00	0.00	
5,200.0	18.18	158.08	4,970.6	-1,360.1	547.3	1,466.1	0.00	0.00	
5,300.0	18.18	158.08	5,065.6	-1,389.0	558.9	1,497.3	0.00	0.00	
5,400.0	18.18	158.08	5,160.6	-1,418.0	570.6	1,528.5	0.00	0.00	
5,445.6	18.18	158.08	5,204.0	-1,431.2	575.9	1,542.7	0.00	0.00	Was G
5,500.0	18.18	158.08	5,255.6	-1,446.9	582.2	1,559.6	0.00	0.00	
5,600.0	18.18	158.08	5,350.6	-1,475.8	593.8	1,590.8	0.00	0.00	
5,700.0	18.18	158.08	5,445.7	-1,504.8	605.5	1,622.0	0.00	0.00	
5,800.0	18.18	158.08	5,540.7	-1,533.7	617.1	1,653.2	0.00	0.00	
5,900.0	18.18	158.08	5,635.7	-1,562.7	628.8	1,684.4	0.00	0.00	
6,000.0	18.18	158.08	5,730.7	-1,591.6	640.4	1,715.6	0.00	0.00	
6,100.0	18.18	158.08	5,825.7	-1,620.6	652.1	1,746.8	0.00	0.00	
6,200.0	18.18	158.08	5,920.7	-1,649.5	663.7	1,778.0	0.00	0.00	
6,300.0	18.18	158.08	6,015.7	-1,678.4	675.4	1,809.2	0.00	0.00	
6,400.0	18.18	158.08	6,110.7	-1,707.4	687.0	1,840.4	0.00	0.00	
6,500.0	18.18	158.08	6,205.7	-1,736.3	698.6	1,871.6	0.00	0.00	
6,600.0	18.18	158.08	6,300.7	-1,765.3	710.3	1,902.8	0.00	0.00	
6,700.0	18.18	158.08	6,395.8	-1,794.2	721.9	1,934.0	0.00	0.00	
6,800.0	18.18	158.08	6,490.8	-1,823.1	733.6	1,965.2	0.00	0.00	
6,900.0	18.18	158.08	6,585.8	-1,852.1	745.2	1,996.4	0.00	0.00	
7,000.0	18.18	158.08	6,680.8	-1,881.0	756.9	2,027.6	0.00	0.00	
7,100.0	18.18	158.08	6,775.8	-1,910.0	768.5	2,058.8	0.00	0.00	
7,200.0	18.18	158.08	6,870.8	-1,938.9	780.2	2,090.0	0.00	0.00	
7,300.0	18.18	158.08	6,965.8	-1,967.8	791.8	2,121.2	0.00	0.00	
7,400.0	18.18	158.08	7,060.8	-1,996.8	803.4	2,152.4	0.00	0.00	
7,500.0	18.18	158.08	7,155.8	-2,025.7	815.1	2,183.6	0.00	0.00	
7,600.0	18.18	158.08	7,250.8	-2,054.7	826.7	2,214.7	0.00	0.00	
7,700.0	18.18	158.08	7,345.9	-2,083.6	838.4	2,245.9	0.00	0.00	
7,800.0	18.18	158.08	7,440.9	-2,112.5	850.0	2,277.1	0.00	0.00	
7,900.0	18.18	158.08	7,535.9	-2,141.5	861.7	2,308.3	0.00	0.00	
8,000.0	18.18	158.08	7,630.9	-2,170.4	873.3	2,339.5	0.00	0.00	
8,100.0	18.18	158.08	7,725.9	-2,199.4	885.0	2,370.7	0.00	0.00	
8,123.5	18.18	158.08	7,748.2	-2,206.2	887.7	2,378.1	0.00	0.00	Start Drop -3.00
8,200.0	15.88	158.08	7,821.4	-2,226.9	896.1	2,400.5	3.00	-3.00	
8,300.0	12.88	158.08	7,918.2	-2,250.0	905.3	2,425.3	3.00	-3.00	
8,400.0	9.88	158.08	8,016.2	-2,268.3	912.7	2,445.0	3.00	-3.00	
8,500.0	6.88	158.08	8,115.2	-2,281.8	918.1	2,459.6	3.00	-3.00	
8,600.0	3.88	158.08	8,214.7	-2,290.5	921.6	2,469.0	3.00	-3.00	
8,689.4	1.20	158.08	8,304.0	-2,294.2	923.1	2,472.9	3.00	-3.00	WF
8,700.0	0.88	158.08	8,314.6	-2,294.4	923.2	2,473.1	3.00	-3.00	
8,729.4	0.00	0.00	8,344.0	-2,294.6	923.3	2,473.4	3.00	-3.00	EOD; Inc=0° - TOG - 8509B-36 B36 496 TGT
8,800.0	0.00	0.00	8,414.6	-2,294.6	923.3	2,473.4	0.00	0.00	
8,900.0	0.00	0.00	8,514.6	-2,294.6	923.3	2,473.4	0.00	0.00	
9,000.0	0.00	0.00	8,614.6	-2,294.6	923.3	2,473.4	0.00	0.00	
9,100.0	0.00	0.00	8,714.6	-2,294.6	923.3	2,473.4	0.00	0.00	
9,200.0	0.00	0.00	8,814.6	-2,294.6	923.3	2,473.4	0.00	0.00	
9,300.0	0.00	0.00	8,914.6	-2,294.6	923.3	2,473.4	0.00	0.00	
9,389.4	0.00	0.00	9,004.0	-2,294.6	923.3	2,473.4	0.00	0.00	Price_GR
9,400.0	0.00	0.00	9,014.6	-2,294.6	923.3	2,473.4	0.00	0.00	
9,500.0	0.00	0.00	9,114.6	-2,294.6	923.3	2,473.4	0.00	0.00	
9,600.0	0.00	0.00	9,214.6	-2,294.6	923.3	2,473.4	0.00	0.00	

# Directional Plus

## Planning Report

<b>Database:</b>	EDM 2003.21 US Multi User Db	<b>Local Co-ordinate Reference:</b>	Well 8509B-36 B36 496
<b>Company:</b>	EnCana Oil & Gas (USA) Inc	<b>TVD Reference:</b>	KBE @ 8374.0ft (Original Well Elev)
<b>Project:</b>	Story Gulch	<b>MD Reference:</b>	KBE @ 8374.0ft (Original Well Elev)
<b>Site:</b>	S36-T4S-R96W (B36 496)	<b>North Reference:</b>	True
<b>Well:</b>	8509B-36 B36 496	<b>Survey Calculation Method:</b>	Minimum Curvature
<b>Wellbore:</b>	DD		
<b>Design:</b>	Plan #1		

Planned Survey									
Measured Depth (ft)	Inclination (°)	Azimuth (°)	Vertical Depth (ft)	+N/-S (ft)	+E/-W (ft)	Vertical Section (ft)	Dogleg Rate (°/100ft)	Build Rate (°/100ft)	Comments / Formations
9,700.0	0.00	0.00	9,314.6	-2,294.6	923.3	2,473.4	0.00	0.00	
9,800.0	0.00	0.00	9,414.6	-2,294.6	923.3	2,473.4	0.00	0.00	
9,900.0	0.00	0.00	9,514.6	-2,294.6	923.3	2,473.4	0.00	0.00	
10,000.0	0.00	0.00	9,614.6	-2,294.6	923.3	2,473.4	0.00	0.00	
10,100.0	0.00	0.00	9,714.6	-2,294.6	923.3	2,473.4	0.00	0.00	
10,200.0	0.00	0.00	9,814.6	-2,294.6	923.3	2,473.4	0.00	0.00	
10,300.0	0.00	0.00	9,914.6	-2,294.6	923.3	2,473.4	0.00	0.00	
10,400.0	0.00	0.00	10,014.6	-2,294.6	923.3	2,473.4	0.00	0.00	
10,500.0	0.00	0.00	10,114.6	-2,294.6	923.3	2,473.4	0.00	0.00	
10,600.0	0.00	0.00	10,214.6	-2,294.6	923.3	2,473.4	0.00	0.00	
10,700.0	0.00	0.00	10,314.6	-2,294.6	923.3	2,473.4	0.00	0.00	
10,800.0	0.00	0.00	10,414.6	-2,294.6	923.3	2,473.4	0.00	0.00	
10,900.0	0.00	0.00	10,514.6	-2,294.6	923.3	2,473.4	0.00	0.00	
11,000.0	0.00	0.00	10,614.6	-2,294.6	923.3	2,473.4	0.00	0.00	
11,100.0	0.00	0.00	10,714.6	-2,294.6	923.3	2,473.4	0.00	0.00	
11,200.0	0.00	0.00	10,814.6	-2,294.6	923.3	2,473.4	0.00	0.00	
11,300.0	0.00	0.00	10,914.6	-2,294.6	923.3	2,473.4	0.00	0.00	
11,400.0	0.00	0.00	11,014.6	-2,294.6	923.3	2,473.4	0.00	0.00	
11,500.0	0.00	0.00	11,114.6	-2,294.6	923.3	2,473.4	0.00	0.00	
11,600.0	0.00	0.00	11,214.6	-2,294.6	923.3	2,473.4	0.00	0.00	
11,700.0	0.00	0.00	11,314.6	-2,294.6	923.3	2,473.4	0.00	0.00	
11,789.4	0.00	0.00	11,404.0	-2,294.6	923.3	2,473.4	0.00	0.00	Paludal
11,800.0	0.00	0.00	11,414.6	-2,294.6	923.3	2,473.4	0.00	0.00	
11,900.0	0.00	0.00	11,514.6	-2,294.6	923.3	2,473.4	0.00	0.00	
12,000.0	0.00	0.00	11,614.6	-2,294.6	923.3	2,473.4	0.00	0.00	
12,100.0	0.00	0.00	11,714.6	-2,294.6	923.3	2,473.4	0.00	0.00	
12,200.0	0.00	0.00	11,814.6	-2,294.6	923.3	2,473.4	0.00	0.00	
12,300.0	0.00	0.00	11,914.6	-2,294.6	923.3	2,473.4	0.00	0.00	
12,389.4	0.00	0.00	12,004.0	-2,294.6	923.3	2,473.4	0.00	0.00	Rollins - 8509B-36 B36 496 BHL
12,400.0	0.00	0.00	12,014.6	-2,294.6	923.3	2,473.4	0.00	0.00	
12,500.0	0.00	0.00	12,114.6	-2,294.6	923.3	2,473.4	0.00	0.00	
12,600.0	0.00	0.00	12,214.6	-2,294.6	923.3	2,473.4	0.00	0.00	
12,700.0	0.00	0.00	12,314.6	-2,294.6	923.3	2,473.4	0.00	0.00	
12,719.4	0.00	0.00	12,334.0	-2,294.6	923.3	2,473.4	0.00	0.00	Cozzette
12,800.0	0.00	0.00	12,414.6	-2,294.6	923.3	2,473.4	0.00	0.00	
12,900.0	0.00	0.00	12,514.6	-2,294.6	923.3	2,473.4	0.00	0.00	
12,909.4	0.00	0.00	12,524.0	-2,294.6	923.3	2,473.4	0.00	0.00	Corcoran
13,000.0	0.00	0.00	12,614.6	-2,294.6	923.3	2,473.4	0.00	0.00	
13,100.0	0.00	0.00	12,714.6	-2,294.6	923.3	2,473.4	0.00	0.00	
13,189.4	0.00	0.00	12,804.0	-2,294.6	923.3	2,473.4	0.00	0.00	Sego
13,200.0	0.00	0.00	12,814.6	-2,294.6	923.3	2,473.4	0.00	0.00	
13,300.0	0.00	0.00	12,914.6	-2,294.6	923.3	2,473.4	0.00	0.00	
13,389.4	0.00	0.00	13,004.0	-2,294.6	923.3	2,473.4	0.00	0.00	L Sego
13,400.0	0.00	0.00	13,014.6	-2,294.6	923.3	2,473.4	0.00	0.00	
13,500.0	0.00	0.00	13,114.6	-2,294.6	923.3	2,473.4	0.00	0.00	
13,600.0	0.00	0.00	13,214.6	-2,294.6	923.3	2,473.4	0.00	0.00	
13,639.4	0.00	0.00	13,254.0	-2,294.6	923.3	2,473.4	0.00	0.00	Driller's TD @ 13639.4' MD
13,700.0	0.00	0.00	13,314.6	-2,294.6	923.3	2,473.4	0.00	0.00	
13,800.0	0.00	0.00	13,414.6	-2,294.6	923.3	2,473.4	0.00	0.00	
13,889.4	0.00	0.00	13,504.0	-2,294.6	923.3	2,473.4	0.00	0.00	

# Directional Plus

## Planning Report

<b>Database:</b>	EDM 2003.21 US Multi User Db	<b>Local Co-ordinate Reference:</b>	Well 8509B-36 B36 496
<b>Company:</b>	EnCana Oil & Gas (USA) Inc	<b>TVD Reference:</b>	KBE @ 8374.0ft (Original Well Elev)
<b>Project:</b>	Story Gulch	<b>MD Reference:</b>	KBE @ 8374.0ft (Original Well Elev)
<b>Site:</b>	S36-T4S-R96W (B36 496)	<b>North Reference:</b>	True
<b>Well:</b>	8509B-36 B36 496	<b>Survey Calculation Method:</b>	Minimum Curvature
<b>Wellbore:</b>	DD		
<b>Design:</b>	Plan #1		

Targets									
Target Name									
- hit/miss target	Dip Angle	Dip Dir.	TVD	+N/-S	+E/-W	Northing	Easting	Latitude	Longitude
- Shape	(°)	(°)	(ft)	(ft)	(ft)	(ft)	(ft)		
8509B-36 B36 496 BHL	0.00	0.00	12,004.0	-2,294.6	923.3	1,675,044.96	2,265,222.85	39° 39' 28.11 N	108° 6' 36.42 W
- plan hits target center									
- Rectangle (sides W30.0 H50.0 D0.0)									
8509B-36 B36 496 TGT	0.00	0.00	8,344.0	-2,294.6	923.3	1,675,044.96	2,265,222.85	39° 39' 28.11 N	108° 6' 36.42 W
- plan hits target center									
- Point									

Formations						
Measured Depth	Vertical Depth	Name	Lithology	Dip	Dip Direction	
(ft)	(ft)			(°)	(°)	
1,656.6	1,604.0	Mahog Bench		0.00		
5,445.6	5,204.0	Was G		0.00		
8,689.4	8,304.0	WF		0.00		
8,729.4	8,344.0	TOG		0.00		
9,389.4	9,004.0	Price_GR		0.00		
11,789.4	11,404.0	Paludal		0.00		
12,389.4	12,004.0	Rollins		0.00		
12,719.4	12,334.0	Cozzette		0.00		
12,909.4	12,524.0	Corcoran		0.00		
13,189.4	12,804.0	Sego		0.00		
13,389.4	13,004.0	L Sego		0.00		

Plan Annotations				
Measured Depth	Vertical Depth	Local Coordinates		Comment
(ft)	(ft)	+N/-S (ft)	+E/-W (ft)	
200.0	200.0	0.0	0.0	KOP @ 200' MD
805.9	795.8	-88.4	35.6	EOB; Inc=18.18°
8,123.5	7,748.2	-2,206.2	887.7	Start Drop -3.00
8,729.4	8,344.0	-2,294.6	923.3	EOD; Inc=0°
13,639.4	13,254.0	-2,294.6	923.3	Driller's TD @ 13639.4' MD
13,889.4	13,504.0	-2,294.6	923.3	Permit TD @ 13889.4' MD