

T4S, R96W, 6th P.M.

Encana Oil & Gas (USA) INC.

1953 Brass Cap,  
0.8' High, Mound  
of Stones  
Lat: 39.66042°  
Long: 108.126567°

1953 Brass Cap,  
0.6' High, Steel Post  
Lat: 39.66053°  
Long: 108.117142°

1953 Brass Cap,  
0.4' High, Steel Post  
Lat: 39.66064°  
Long: 108.107683°

Well location, STORY GULCH UNIT #8509B-36 B36 496, located as shown in Lot 2 of Section 36, T4S, R96W, 6th P.M., Garfield County, Colorado

BASIS OF ELEVATION

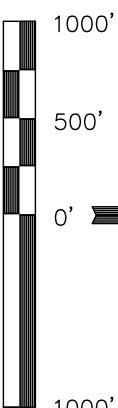
BENCH MARK (H79) LOCATED IN THE NE 1/4 OF SECTION 25, T4S, R98W, 6th P.M. TAKEN FROM THE BULL FORK QUADRANGLE, COLORADO, 7.5 MINUTE SERIES (TOPO GRAPHICAL MAP) PUBLISHED BY THE UNITED STATES DEPARTMENT OF THE INTERIOR, GEOLOGICAL SURVEY. SAID ELEVATION IS MARKED AS BEING 8535 FEET.

BASIS OF BEARINGS

BASIS OF BEARINGS IS A G.P.S. OBSERVATION.

Sheet 10 of 11

1953 Brass Cap  
0.4' High, "T" Post  
Lat: 39.658806°  
Long: 108.107661°



CERTIFICATE

THIS IS TO CERTIFY THAT THE ABOVE PLAT WAS PREPARED FROM FIELD NOTES OF ACTUAL SURVEYS MADE BY ME OR UNDER MY SUPERVISION AND THAT THE SAME ARE TRUE AND CORRECT TO THE BEST OF MY KNOWLEDGE AND BELIEF.

1953 Brass Cap  
0.5' Below Ground,  
E/W Fence Line  
Lat: 39.658806°  
Long: 108.107661°

REVISED: 09-10-09

REGISTERED LAND SURVEYOR  
REGISTRATION NO. 1492  
STATE OF COLORADO

UNTIAH ENGINEERING & LAND SURVEYING  
85 SOUTH 200 EAST - VERNAL, UTAH 84078  
(435) 789-1017

SCALE	DATE SURVEYED:	DATE DRAWN:
1" = 1000'	08-06-09	08-27-09

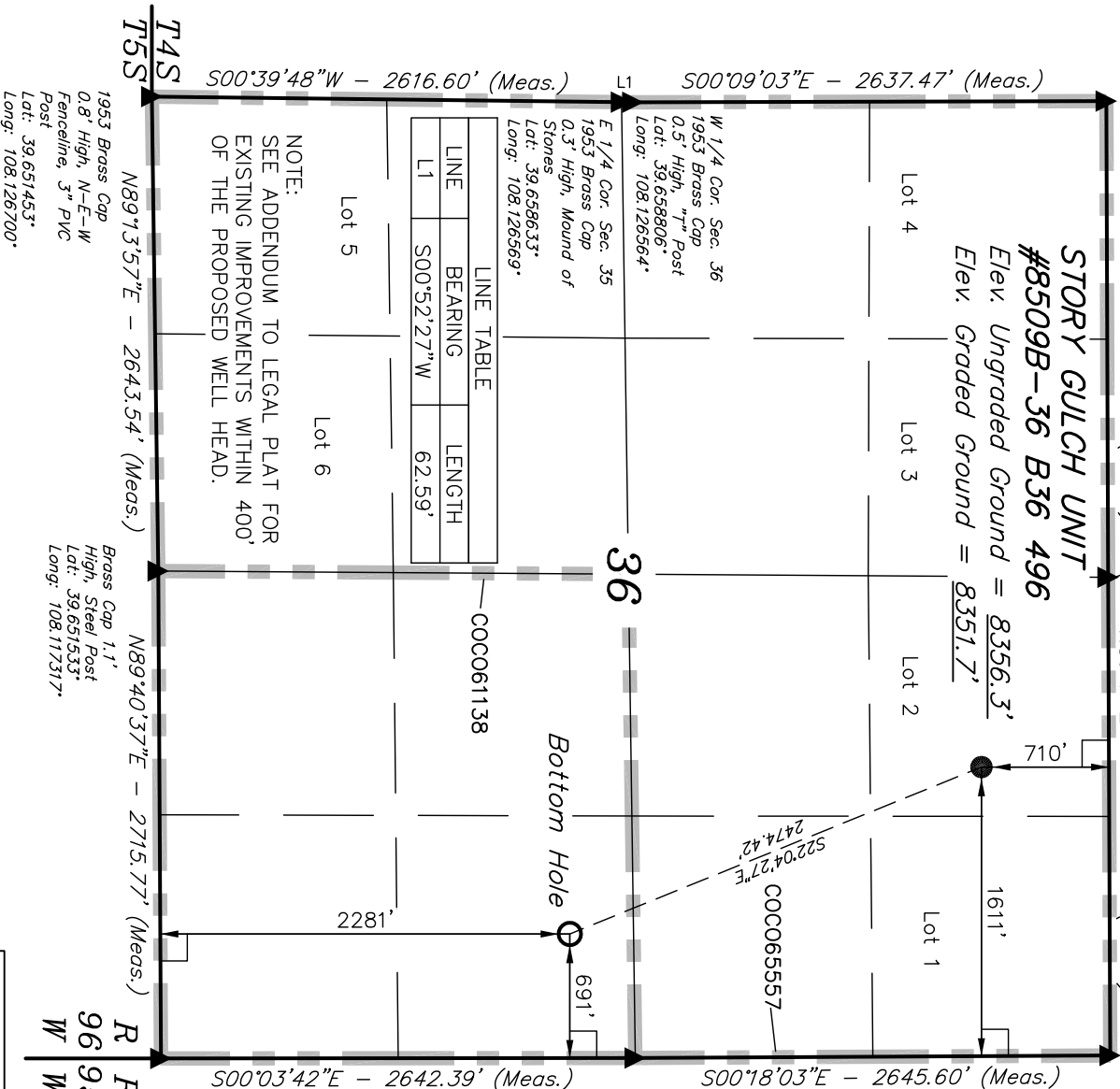
PARTY	REFERENCES
D.K. J.R. C.H.	G.L.O. PLAT
WEATHER	FILE
WARM	Encana Oil & Gas (USA) INC.

LEGEND:

- = 90° SYMBOL
- = PROPOSED WELL HEAD.
- = SECTION CORNERS LOCATED

NAD 83 (TARGET BOTTOM HOLE)	NAD 83 (SURFACE LOCATION)
LATITUDE = 39°39'28.11" (39.657808)	LATITUDE = 39°39'50.79" (39.664108)
LONGITUDE = 108°06'36.42" (108.110117)	LONGITUDE = 108°06'48.23" (108.113397)
NAD 27 (TARGET BOTTOM HOLE)	NAD 27 (SURFACE LOCATION)
LATITUDE = 39°39'28.20" (39.657833)	LATITUDE = 39°39'50.87" (39.664131)
LONGITUDE = 108°06'34.14" (108.109483)	LONGITUDE = 108°06'45.94" (108.112761)

PDOP = 2.0



500°39'48"W - 2616.60' (Meas.)

500°09'03"E - 2637.47' (Meas.)

N89°46'52"E - 2653.74' (Meas.)

N89°44'26"E - 2664.30' (Meas.)

T4S  
T5S  
N89°3'57"E - 2643.54' (Meas.)

N89°40'37"E - 2715.77' (Meas.)

500°03'42"E - 2642.39' (Meas.)

500°18'03"E - 2645.60' (Meas.)

R96  
W95  
W96

1953 Brass Cap  
0.8' High, N-E-W  
Fence Line, 3" PVC  
Post  
Lat: 39.651453°  
Long: 108.126700°

Brass Cap 1.1'  
High, Steel Post  
Lat: 39.651533°  
Long: 108.117317°

LINE	BEARING	LENGTH
L1	S00°52'27"W	62.59'

NOTE:  
SEE ADDENDUM TO LEGAL PLAT FOR  
EXISTING IMPROVEMENTS WITHIN 400'  
OF THE PROPOSED WELL HEAD.

Lot 5

Lot 6

COC061138

Bottom Hole

S22°04'27"E  
2474.42'

COC065557

Lot 4

Lot 3

Lot 2

Lot 1

1611'

710'