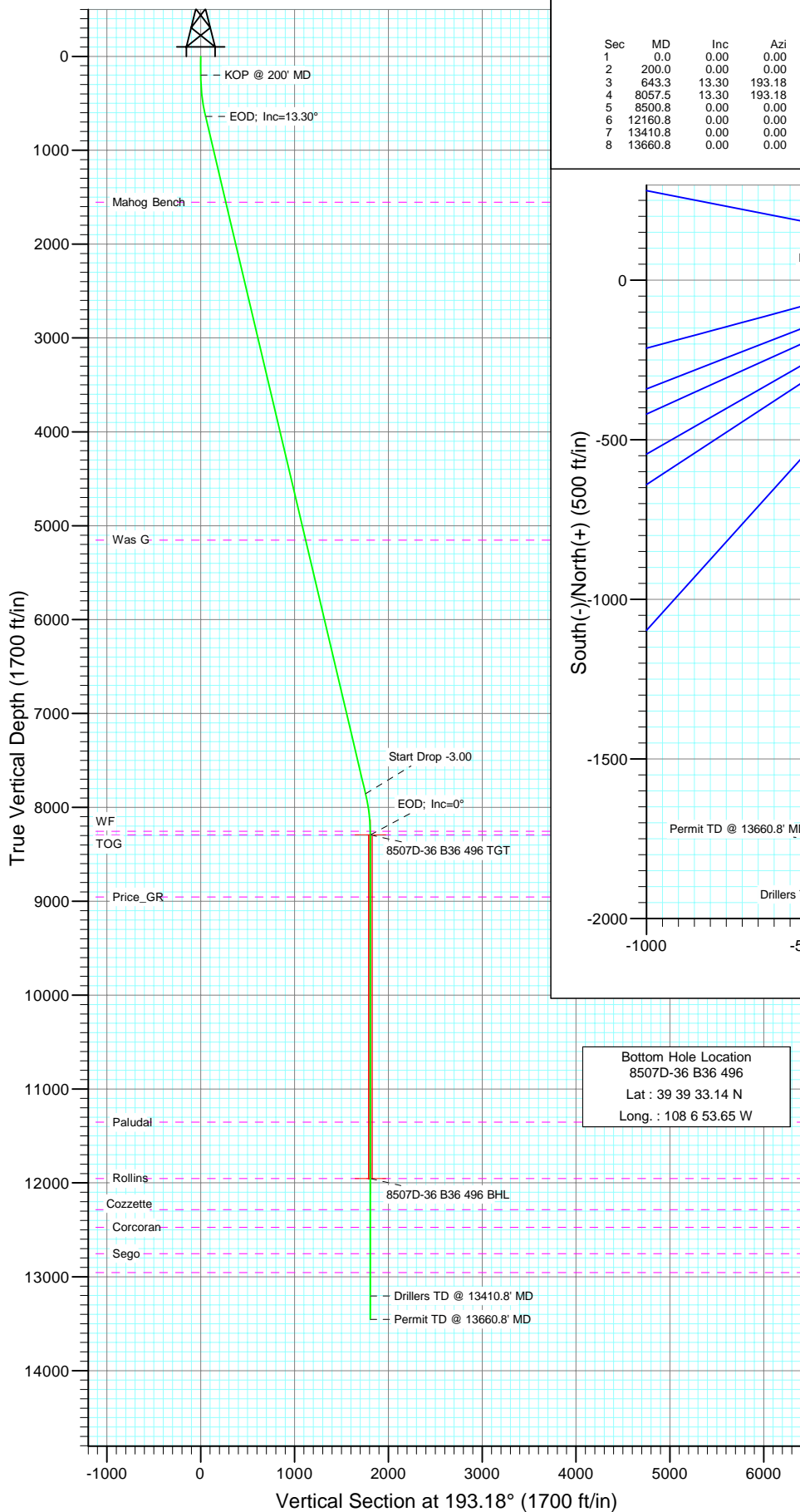
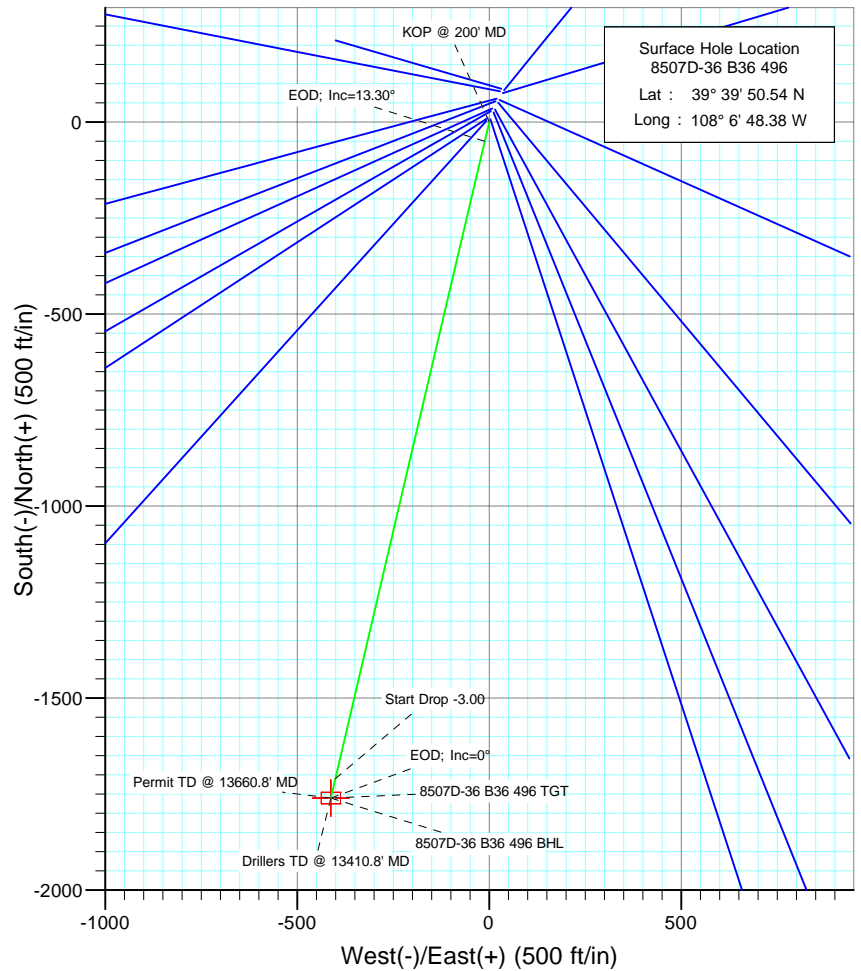




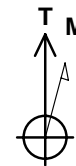
Project: Story Gulch
 Site: S36-T4S-R96W (B36 496)
 Well: 8507D-36 B36 496
 Wellbore: DD
 Design: Plan #1



SECTION DETAILS										Target
Sec	MD	Inc	Azi	TVD	+N/-S	+E/-W	DLeg	TFace	VSec	
1	0.0	0.00	0.00	0.0	0.0	0.0	0.00	0.00	0.0	
2	200.0	0.00	0.00	200.0	0.0	0.0	0.00	0.00	0.0	
3	643.3	13.30	193.18	639.3	-48.9	-11.7	3.00	193.18	51.2	
4	8057.5	13.30	193.18	7854.7	-1710.5	-400.7	0.00	0.00	1756.8	
5	8500.8	0.00	0.00	8294.0	-1760.3	-412.4	3.00	180.00	1808.0	8507D-36 B36 496 TGT
6	12160.8	0.00	0.00	11954.0	-1760.3	-412.4	0.00	0.00	1808.0	8507D-36 B36 496 BHL
7	13410.8	0.00	0.00	13204.0	-1760.3	-412.4	0.00	0.00	1808.0	
8	13660.8	0.00	0.00	13454.0	-1760.3	-412.4	0.00	0.00	1808.0	



Bottom Hole Location
 8507D-36 B36 496
 Lat : 39 39 33.14 N
 Long. : 108 6 53.65 W



Azimuths to True North
 Magnetic North: 10.63°

Magnetic Field
 Strength: 52514.2snT
 Dip Angle: 65.91°
 Date: 9/1/2009
 Model: IGRF200510

FORMATION TOP DETAILS

TVDPath	MDPath	Formation
1554.0	1583.2	Mahog Bench
5154.0	5282.4	Was G
8254.0	8460.8	WF
8294.0	8500.8	TOG
8954.0	9160.8	Price_GR
11354.0	11560.8	Paludal
11954.0	12160.8	Rollins
12284.0	12490.8	Cozzette
12474.0	12680.8	Corcoran
12754.0	12960.8	Sego
12954.0	13160.8	L Sego

DESIGN DETAILS: Plan #1

95XXX: BH
 KBE @ 8374.0ft (Original Well Elev)

Target	Azimuth	Origin Type/N/S	E/W	From TVD
8507D-36 B36 496 BHL	193.18	Slot	0.0	0.0

Directional Plus

Planning Report

Database:	EDM 2003.21 US Multi User Db	Local Co-ordinate Reference:	Well 8507D-36 B36 496
Company:	EnCana Oil & Gas (USA) Inc	TVD Reference:	KBE @ 8374.0ft (Original Well Elev)
Project:	Story Gulch	MD Reference:	KBE @ 8374.0ft (Original Well Elev)
Site:	S36-T4S-R96W (B36 496)	North Reference:	True
Well:	8507D-36 B36 496	Survey Calculation Method:	Minimum Curvature
Wellbore:	DD		
Design:	Plan #1		

Project	Story Gulch		
Map System:	US State Plane 1983	System Datum:	Mean Sea Level
Geo Datum:	North American Datum 1983		
Map Zone:	Colorado Central Zone		

Site		S36-T4S-R96W (B36 496)			
Site Position:		Northing:	1,677,422.27 ft	Latitude:	39° 39' 51.36 N
From:	Lat/Long	Easting:	2,264,394.80 ft	Longitude:	108° 6' 47.88 W
Position Uncertainty:	0.0 ft	Slot Radius:	in	Grid Convergence:	-1.65 °

Well	8507D-36 B36 496					
Well Position	+N/-S	0.0 ft	Northing:	1,677,340.19 ft	Latitude:	39° 39' 50.54 N
	+E/-W	0.0 ft	Easting:	2,264,353.34 ft	Longitude:	108° 6' 48.38 W
Position Uncertainty		0.0 ft	Wellhead Elevation:	ft	Ground Level:	8,352.0 ft

Wellbore	DD				
Magnetics	Model Name	Sample Date	Declination (°)	Dip Angle (°)	Field Strength (nT)
	IGRF200510	9/1/2009	10.63	65.91	52,514

Design	Plan #1				
Audit Notes:					
Version:	Phase:	PLAN	Tie On Depth:	0.0	
Vertical Section:	Depth From (TVD) (ft)	+N/-S (ft)	+E/-W (ft)	Direction (°)	
	0.0	0.0	0.0	193.18	

Plan Sections										
Measured Depth (ft)	Inclination (°)	Azimuth (°)	Vertical Depth (ft)	+N/-S (ft)	+E/-W (ft)	Dogleg Rate (°/100ft)	Build Rate (°/100ft)	Turn Rate (°/100ft)	TFO (°)	Target
0.0	0.00	0.00	0.0	0.0	0.0	0.00	0.00	0.00	0.00	
200.0	0.00	0.00	200.0	0.0	0.0	0.00	0.00	0.00	0.00	
643.3	13.30	193.18	639.3	-49.9	-11.7	3.00	3.00	0.00	193.18	
8,057.5	13.30	193.18	7,854.7	-1,710.5	-400.7	0.00	0.00	0.00	0.00	
8,500.8	0.00	0.00	8,294.0	-1,760.3	-412.4	3.00	-3.00	0.00	180.00	8507D-36 B36 496 TC
12,160.8	0.00	0.00	11,954.0	-1,760.3	-412.4	0.00	0.00	0.00	0.00	8507D-36 B36 496 Bf
13,410.8	0.00	0.00	13,204.0	-1,760.3	-412.4	0.00	0.00	0.00	0.00	
13,660.8	0.00	0.00	13,454.0	-1,760.3	-412.4	0.00	0.00	0.00	0.00	

Directional Plus

Planning Report

Database:	EDM 2003.21 US Multi User Db	Local Co-ordinate Reference:	Well 8507D-36 B36 496
Company:	EnCana Oil & Gas (USA) Inc	TVD Reference:	KBE @ 8374.0ft (Original Well Elev)
Project:	Story Gulch	MD Reference:	KBE @ 8374.0ft (Original Well Elev)
Site:	S36-T4S-R96W (B36 496)	North Reference:	True
Well:	8507D-36 B36 496	Survey Calculation Method:	Minimum Curvature
Wellbore:	DD		
Design:	Plan #1		

Planned Survey

Measured Depth (ft)	Inclination (°)	Azimuth (°)	Vertical Depth (ft)	+N/-S (ft)	+E/-W (ft)	Vertical Section (ft)	Dogleg Rate (°/100ft)	Build Rate (°/100ft)	Comments / Formations
0.0	0.00	0.00	0.0	0.0	0.0	0.0	0.00	0.00	
100.0	0.00	0.00	100.0	0.0	0.0	0.0	0.00	0.00	
200.0	0.00	0.00	200.0	0.0	0.0	0.0	0.00	0.00	KOP @ 200' MD
300.0	3.00	193.18	300.0	-2.5	-0.6	2.6	3.00	3.00	
400.0	6.00	193.18	399.6	-10.2	-2.4	10.5	3.00	3.00	
500.0	9.00	193.18	498.8	-22.9	-5.4	23.5	3.00	3.00	
600.0	12.00	193.18	597.1	-40.6	-9.5	41.7	3.00	3.00	
643.3	13.30	193.18	639.3	-49.9	-11.7	51.2	3.00	3.00	EOD; Inc=13.30°
700.0	13.30	193.18	694.5	-62.6	-14.7	64.3	0.00	0.00	
800.0	13.30	193.18	791.8	-85.0	-19.9	87.3	0.00	0.00	
900.0	13.30	193.18	889.1	-107.4	-25.2	110.3	0.00	0.00	
1,000.0	13.30	193.18	986.5	-129.8	-30.4	133.3	0.00	0.00	
1,100.0	13.30	193.18	1,083.8	-152.2	-35.6	156.3	0.00	0.00	
1,200.0	13.30	193.18	1,181.1	-174.6	-40.9	179.3	0.00	0.00	
1,300.0	13.30	193.18	1,278.4	-197.0	-46.1	202.3	0.00	0.00	
1,400.0	13.30	193.18	1,375.7	-219.3	-51.4	225.3	0.00	0.00	
1,500.0	13.30	193.18	1,473.1	-241.7	-56.6	248.3	0.00	0.00	
1,583.2	13.30	193.18	1,554.0	-260.4	-61.0	267.4	0.00	0.00	Mahog Bench
1,600.0	13.30	193.18	1,570.4	-264.1	-61.9	271.3	0.00	0.00	
1,700.0	13.30	193.18	1,667.7	-286.5	-67.1	294.3	0.00	0.00	
1,800.0	13.30	193.18	1,765.0	-308.9	-72.4	317.3	0.00	0.00	
1,900.0	13.30	193.18	1,862.3	-331.3	-77.6	340.3	0.00	0.00	
2,000.0	13.30	193.18	1,959.6	-353.7	-82.9	363.3	0.00	0.00	
2,100.0	13.30	193.18	2,057.0	-376.1	-88.1	386.3	0.00	0.00	
2,200.0	13.30	193.18	2,154.3	-398.5	-93.4	409.3	0.00	0.00	
2,300.0	13.30	193.18	2,251.6	-420.9	-98.6	432.3	0.00	0.00	
2,400.0	13.30	193.18	2,348.9	-443.3	-103.9	455.3	0.00	0.00	
2,500.0	13.30	193.18	2,446.2	-465.7	-109.1	478.3	0.00	0.00	
2,600.0	13.30	193.18	2,543.6	-488.1	-114.3	501.3	0.00	0.00	
2,700.0	13.30	193.18	2,640.9	-510.5	-119.6	524.3	0.00	0.00	
2,800.0	13.30	193.18	2,738.2	-532.9	-124.8	547.3	0.00	0.00	
2,900.0	13.30	193.18	2,835.5	-555.3	-130.1	570.3	0.00	0.00	
3,000.0	13.30	193.18	2,932.8	-577.7	-135.3	593.4	0.00	0.00	
3,100.0	13.30	193.18	3,030.1	-600.1	-140.6	616.4	0.00	0.00	
3,200.0	13.30	193.18	3,127.5	-622.5	-145.8	639.4	0.00	0.00	
3,300.0	13.30	193.18	3,224.8	-644.9	-151.1	662.4	0.00	0.00	
3,400.0	13.30	193.18	3,322.1	-667.3	-156.3	685.4	0.00	0.00	
3,500.0	13.30	193.18	3,419.4	-689.7	-161.6	708.4	0.00	0.00	
3,600.0	13.30	193.18	3,516.7	-712.1	-166.8	731.4	0.00	0.00	
3,700.0	13.30	193.18	3,614.1	-734.5	-172.1	754.4	0.00	0.00	
3,800.0	13.30	193.18	3,711.4	-756.9	-177.3	777.4	0.00	0.00	
3,900.0	13.30	193.18	3,808.7	-779.3	-182.6	800.4	0.00	0.00	
4,000.0	13.30	193.18	3,906.0	-801.7	-187.8	823.4	0.00	0.00	
4,100.0	13.30	193.18	4,003.3	-824.1	-193.0	846.4	0.00	0.00	
4,200.0	13.30	193.18	4,100.6	-846.5	-198.3	869.4	0.00	0.00	
4,300.0	13.30	193.18	4,198.0	-868.9	-203.5	892.4	0.00	0.00	
4,400.0	13.30	193.18	4,295.3	-891.3	-208.8	915.4	0.00	0.00	
4,500.0	13.30	193.18	4,392.6	-913.7	-214.0	938.4	0.00	0.00	
4,600.0	13.30	193.18	4,489.9	-936.1	-219.3	961.4	0.00	0.00	
4,700.0	13.30	193.18	4,587.2	-958.5	-224.5	984.4	0.00	0.00	
4,800.0	13.30	193.18	4,684.6	-980.9	-229.8	1,007.4	0.00	0.00	
4,900.0	13.30	193.18	4,781.9	-1,003.3	-235.0	1,030.4	0.00	0.00	

Directional Plus

Planning Report

Database:	EDM 2003.21 US Multi User Db	Local Co-ordinate Reference:	Well 8507D-36 B36 496
Company:	EnCana Oil & Gas (USA) Inc	TVD Reference:	KBE @ 8374.0ft (Original Well Elev)
Project:	Story Gulch	MD Reference:	KBE @ 8374.0ft (Original Well Elev)
Site:	S36-T4S-R96W (B36 496)	North Reference:	True
Well:	8507D-36 B36 496	Survey Calculation Method:	Minimum Curvature
Wellbore:	DD		
Design:	Plan #1		

Planned Survey

Measured Depth (ft)	Inclination (°)	Azimuth (°)	Vertical Depth (ft)	+N/-S (ft)	+E/-W (ft)	Vertical Section (ft)	Dogleg Rate (°/100ft)	Build Rate (°/100ft)	Comments / Formations
5,000.0	13.30	193.18	4,879.2	-1,025.7	-240.3	1,053.4	0.00	0.00	
5,100.0	13.30	193.18	4,976.5	-1,048.1	-245.5	1,076.4	0.00	0.00	
5,200.0	13.30	193.18	5,073.8	-1,070.5	-250.8	1,099.4	0.00	0.00	
5,282.4	13.30	193.18	5,154.0	-1,088.9	-255.1	1,118.4	0.00	0.00	Was G
5,300.0	13.30	193.18	5,171.1	-1,092.9	-256.0	1,122.4	0.00	0.00	
5,400.0	13.30	193.18	5,268.5	-1,115.3	-261.3	1,145.4	0.00	0.00	
5,500.0	13.30	193.18	5,365.8	-1,137.7	-266.5	1,168.4	0.00	0.00	
5,600.0	13.30	193.18	5,463.1	-1,160.0	-271.7	1,191.5	0.00	0.00	
5,700.0	13.30	193.18	5,560.4	-1,182.4	-277.0	1,214.5	0.00	0.00	
5,800.0	13.30	193.18	5,657.7	-1,204.8	-282.2	1,237.5	0.00	0.00	
5,900.0	13.30	193.18	5,755.1	-1,227.2	-287.5	1,260.5	0.00	0.00	
6,000.0	13.30	193.18	5,852.4	-1,249.6	-292.7	1,283.5	0.00	0.00	
6,100.0	13.30	193.18	5,949.7	-1,272.0	-298.0	1,306.5	0.00	0.00	
6,200.0	13.30	193.18	6,047.0	-1,294.4	-303.2	1,329.5	0.00	0.00	
6,300.0	13.30	193.18	6,144.3	-1,316.8	-308.5	1,352.5	0.00	0.00	
6,400.0	13.30	193.18	6,241.6	-1,339.2	-313.7	1,375.5	0.00	0.00	
6,500.0	13.30	193.18	6,339.0	-1,361.6	-319.0	1,398.5	0.00	0.00	
6,600.0	13.30	193.18	6,436.3	-1,384.0	-324.2	1,421.5	0.00	0.00	
6,700.0	13.30	193.18	6,533.6	-1,406.4	-329.5	1,444.5	0.00	0.00	
6,800.0	13.30	193.18	6,630.9	-1,428.8	-334.7	1,467.5	0.00	0.00	
6,900.0	13.30	193.18	6,728.2	-1,451.2	-340.0	1,490.5	0.00	0.00	
7,000.0	13.30	193.18	6,825.6	-1,473.6	-345.2	1,513.5	0.00	0.00	
7,100.0	13.30	193.18	6,922.9	-1,496.0	-350.4	1,536.5	0.00	0.00	
7,200.0	13.30	193.18	7,020.2	-1,518.4	-355.7	1,559.5	0.00	0.00	
7,300.0	13.30	193.18	7,117.5	-1,540.8	-360.9	1,582.5	0.00	0.00	
7,400.0	13.30	193.18	7,214.8	-1,563.2	-366.2	1,605.5	0.00	0.00	
7,500.0	13.30	193.18	7,312.1	-1,585.6	-371.4	1,628.5	0.00	0.00	
7,600.0	13.30	193.18	7,409.5	-1,608.0	-376.7	1,651.5	0.00	0.00	
7,700.0	13.30	193.18	7,506.8	-1,630.4	-381.9	1,674.5	0.00	0.00	
7,800.0	13.30	193.18	7,604.1	-1,652.8	-387.2	1,697.5	0.00	0.00	
7,900.0	13.30	193.18	7,701.4	-1,675.2	-392.4	1,720.5	0.00	0.00	
8,000.0	13.30	193.18	7,798.7	-1,697.6	-397.7	1,743.5	0.00	0.00	
8,057.5	13.30	193.18	7,854.7	-1,710.5	-400.7	1,756.8	0.00	0.00	Start Drop -3.00
8,100.0	12.02	193.18	7,896.2	-1,719.5	-402.8	1,766.1	3.00	-3.00	
8,200.0	9.02	193.18	7,994.5	-1,737.3	-407.0	1,784.4	3.00	-3.00	
8,300.0	6.02	193.18	8,093.6	-1,750.1	-410.0	1,797.4	3.00	-3.00	
8,400.0	3.02	193.18	8,193.3	-1,757.7	-411.8	1,805.3	3.00	-3.00	
8,460.8	1.20	193.18	8,254.0	-1,759.9	-412.3	1,807.6	3.00	-3.00	WF
8,500.0	0.02	193.18	8,293.2	-1,760.3	-412.4	1,808.0	3.00	-3.00	
8,500.8	0.00	0.00	8,294.0	-1,760.3	-412.4	1,808.0	3.00	-3.00	EOD; Inc=0° - TOG - 8507D-36 B36 496 TGT
8,600.0	0.00	0.00	8,393.2	-1,760.3	-412.4	1,808.0	0.00	0.00	
8,700.0	0.00	0.00	8,493.2	-1,760.3	-412.4	1,808.0	0.00	0.00	
8,800.0	0.00	0.00	8,593.2	-1,760.3	-412.4	1,808.0	0.00	0.00	
8,900.0	0.00	0.00	8,693.2	-1,760.3	-412.4	1,808.0	0.00	0.00	
9,000.0	0.00	0.00	8,793.2	-1,760.3	-412.4	1,808.0	0.00	0.00	
9,100.0	0.00	0.00	8,893.2	-1,760.3	-412.4	1,808.0	0.00	0.00	
9,160.8	0.00	0.00	8,954.0	-1,760.3	-412.4	1,808.0	0.00	0.00	Price_GR
9,200.0	0.00	0.00	8,993.2	-1,760.3	-412.4	1,808.0	0.00	0.00	
9,300.0	0.00	0.00	9,093.2	-1,760.3	-412.4	1,808.0	0.00	0.00	
9,400.0	0.00	0.00	9,193.2	-1,760.3	-412.4	1,808.0	0.00	0.00	
9,500.0	0.00	0.00	9,293.2	-1,760.3	-412.4	1,808.0	0.00	0.00	
9,600.0	0.00	0.00	9,393.2	-1,760.3	-412.4	1,808.0	0.00	0.00	

Directional Plus

Planning Report

Database:	EDM 2003.21 US Multi User Db	Local Co-ordinate Reference:	Well 8507D-36 B36 496
Company:	EnCana Oil & Gas (USA) Inc	TVD Reference:	KBE @ 8374.0ft (Original Well Elev)
Project:	Story Gulch	MD Reference:	KBE @ 8374.0ft (Original Well Elev)
Site:	S36-T4S-R96W (B36 496)	North Reference:	True
Well:	8507D-36 B36 496	Survey Calculation Method:	Minimum Curvature
Wellbore:	DD		
Design:	Plan #1		

Planned Survey									
Measured Depth (ft)	Inclination (°)	Azimuth (°)	Vertical Depth (ft)	+N/-S (ft)	+E/-W (ft)	Vertical Section (ft)	Dogleg Rate (°/100ft)	Build Rate (°/100ft)	Comments / Formations
9,700.0	0.00	0.00	9,493.2	-1,760.3	-412.4	1,808.0	0.00	0.00	
9,800.0	0.00	0.00	9,593.2	-1,760.3	-412.4	1,808.0	0.00	0.00	
9,900.0	0.00	0.00	9,693.2	-1,760.3	-412.4	1,808.0	0.00	0.00	
10,000.0	0.00	0.00	9,793.2	-1,760.3	-412.4	1,808.0	0.00	0.00	
10,100.0	0.00	0.00	9,893.2	-1,760.3	-412.4	1,808.0	0.00	0.00	
10,200.0	0.00	0.00	9,993.2	-1,760.3	-412.4	1,808.0	0.00	0.00	
10,300.0	0.00	0.00	10,093.2	-1,760.3	-412.4	1,808.0	0.00	0.00	
10,400.0	0.00	0.00	10,193.2	-1,760.3	-412.4	1,808.0	0.00	0.00	
10,500.0	0.00	0.00	10,293.2	-1,760.3	-412.4	1,808.0	0.00	0.00	
10,600.0	0.00	0.00	10,393.2	-1,760.3	-412.4	1,808.0	0.00	0.00	
10,700.0	0.00	0.00	10,493.2	-1,760.3	-412.4	1,808.0	0.00	0.00	
10,800.0	0.00	0.00	10,593.2	-1,760.3	-412.4	1,808.0	0.00	0.00	
10,900.0	0.00	0.00	10,693.2	-1,760.3	-412.4	1,808.0	0.00	0.00	
11,000.0	0.00	0.00	10,793.2	-1,760.3	-412.4	1,808.0	0.00	0.00	
11,100.0	0.00	0.00	10,893.2	-1,760.3	-412.4	1,808.0	0.00	0.00	
11,200.0	0.00	0.00	10,993.2	-1,760.3	-412.4	1,808.0	0.00	0.00	
11,300.0	0.00	0.00	11,093.2	-1,760.3	-412.4	1,808.0	0.00	0.00	
11,400.0	0.00	0.00	11,193.2	-1,760.3	-412.4	1,808.0	0.00	0.00	
11,500.0	0.00	0.00	11,293.2	-1,760.3	-412.4	1,808.0	0.00	0.00	
11,560.8	0.00	0.00	11,354.0	-1,760.3	-412.4	1,808.0	0.00	0.00	Paludal
11,600.0	0.00	0.00	11,393.2	-1,760.3	-412.4	1,808.0	0.00	0.00	
11,700.0	0.00	0.00	11,493.2	-1,760.3	-412.4	1,808.0	0.00	0.00	
11,800.0	0.00	0.00	11,593.2	-1,760.3	-412.4	1,808.0	0.00	0.00	
11,900.0	0.00	0.00	11,693.2	-1,760.3	-412.4	1,808.0	0.00	0.00	
12,000.0	0.00	0.00	11,793.2	-1,760.3	-412.4	1,808.0	0.00	0.00	
12,100.0	0.00	0.00	11,893.2	-1,760.3	-412.4	1,808.0	0.00	0.00	
12,160.8	0.00	0.00	11,954.0	-1,760.3	-412.4	1,808.0	0.00	0.00	Rollins - 8507D-36 B36 496 BHL
12,200.0	0.00	0.00	11,993.2	-1,760.3	-412.4	1,808.0	0.00	0.00	
12,300.0	0.00	0.00	12,093.2	-1,760.3	-412.4	1,808.0	0.00	0.00	
12,400.0	0.00	0.00	12,193.2	-1,760.3	-412.4	1,808.0	0.00	0.00	
12,490.8	0.00	0.00	12,284.0	-1,760.3	-412.4	1,808.0	0.00	0.00	Cozzette
12,500.0	0.00	0.00	12,293.2	-1,760.3	-412.4	1,808.0	0.00	0.00	
12,600.0	0.00	0.00	12,393.2	-1,760.3	-412.4	1,808.0	0.00	0.00	
12,680.8	0.00	0.00	12,474.0	-1,760.3	-412.4	1,808.0	0.00	0.00	Corcoran
12,700.0	0.00	0.00	12,493.2	-1,760.3	-412.4	1,808.0	0.00	0.00	
12,800.0	0.00	0.00	12,593.2	-1,760.3	-412.4	1,808.0	0.00	0.00	
12,900.0	0.00	0.00	12,693.2	-1,760.3	-412.4	1,808.0	0.00	0.00	
12,960.8	0.00	0.00	12,754.0	-1,760.3	-412.4	1,808.0	0.00	0.00	Sego
13,000.0	0.00	0.00	12,793.2	-1,760.3	-412.4	1,808.0	0.00	0.00	
13,100.0	0.00	0.00	12,893.2	-1,760.3	-412.4	1,808.0	0.00	0.00	
13,160.8	0.00	0.00	12,954.0	-1,760.3	-412.4	1,808.0	0.00	0.00	L Sego
13,200.0	0.00	0.00	12,993.2	-1,760.3	-412.4	1,808.0	0.00	0.00	
13,300.0	0.00	0.00	13,093.2	-1,760.3	-412.4	1,808.0	0.00	0.00	
13,400.0	0.00	0.00	13,193.2	-1,760.3	-412.4	1,808.0	0.00	0.00	
13,410.8	0.00	0.00	13,204.0	-1,760.3	-412.4	1,808.0	0.00	0.00	Drillers TD @ 13410.8' MD
13,500.0	0.00	0.00	13,293.2	-1,760.3	-412.4	1,808.0	0.00	0.00	
13,600.0	0.00	0.00	13,393.2	-1,760.3	-412.4	1,808.0	0.00	0.00	
13,660.8	0.00	0.00	13,454.0	-1,760.3	-412.4	1,808.0	0.00	0.00	

Directional Plus

Planning Report

Database:	EDM 2003.21 US Multi User Db	Local Co-ordinate Reference:	Well 8507D-36 B36 496
Company:	EnCana Oil & Gas (USA) Inc	TVD Reference:	KBE @ 8374.0ft (Original Well Elev)
Project:	Story Gulch	MD Reference:	KBE @ 8374.0ft (Original Well Elev)
Site:	S36-T4S-R96W (B36 496)	North Reference:	True
Well:	8507D-36 B36 496	Survey Calculation Method:	Minimum Curvature
Wellbore:	DD		
Design:	Plan #1		

Targets									
Target Name									
- hit/miss target	Dip Angle	Dip Dir.	TVD	+N/-S	+E/-W	Northing	Easting	Latitude	Longitude
- Shape	(°)	(°)	(ft)	(ft)	(ft)	(ft)	(ft)		
8507D-36 B36 496 BHL	0.00	0.00	11,954.0	-1,760.3	-412.4	1,675,592.45	2,263,890.51	39° 39' 33.14 N	108° 6' 53.65 W
- plan hits target center									
- Rectangle (sides W30.0 H50.0 D0.0)									
8507D-36 B36 496 TGT	0.00	0.00	8,294.0	-1,760.3	-412.4	1,675,592.45	2,263,890.51	39° 39' 33.14 N	108° 6' 53.65 W
- plan hits target center									
- Point									

Formations						
Measured Depth	Vertical Depth	Name	Lithology	Dip	Dip Direction	
(ft)	(ft)			(°)	(°)	
1,583.2	1,554.0	Mahog Bench		0.00		
5,282.4	5,154.0	Was G		0.00		
8,460.8	8,254.0	WF		0.00		
8,500.8	8,294.0	TOG		0.00		
9,160.8	8,954.0	Price_GR		0.00		
11,560.8	11,354.0	Paludal		0.00		
12,160.8	11,954.0	Rollins		0.00		
12,490.8	12,284.0	Cozzette		0.00		
12,680.8	12,474.0	Corcoran		0.00		
12,960.8	12,754.0	Sego		0.00		
13,160.8	12,954.0	L Sego		0.00		

Plan Annotations				
Measured Depth	Vertical Depth	Local Coordinates		Comment
(ft)	(ft)	+N/-S (ft)	+E/-W (ft)	
200.0	200.0	0.0	0.0	KOP @ 200' MD
643.3	639.3	-49.9	-11.7	EOD; Inc=13.30°
8,057.5	7,854.7	-1,710.5	-400.7	Start Drop -3.00
8,500.8	8,294.0	-1,760.3	-412.4	EOD; Inc=0°
13,410.8	13,204.0	-1,760.3	-412.4	Drillers TD @ 13410.8' MD
13,660.8	13,454.0	-1,760.3	-412.4	Permit TD @ 13660.8' MD