

T4S, R96W, 6th P.M.

Encana Oil & Gas (USA) INC.

1953 Brass Cap,
0.8' High, Mound
of Stones
Lot: 39.66042°
Long: 108.126567°

1953 Brass Cap,
0.6' High, Steel Post
Lot: 39.66053°
Long: 108.117142°

1953 Brass Cap,
0.4' High, Steel Post
Lot: 39.66064°
Long: 108.107683°

Well location, STORY GULCH UNIT #8506A-36 B36 496, located as shown in Lot 2 of Section 36, T4S, R96W, 6th P.M., Garfield County, Colorado

BASIS OF ELEVATION

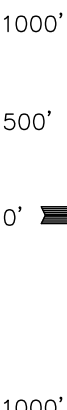
BENCH MARK (H79) LOCATED IN THE NE 1/4 OF SECTION 25, T4S, R98W, 6th P.M. TAKEN FROM THE BULL FORK QUADRANGLE, COLORADO, 7.5 MINUTE SERIES (TOPO GRAPHICAL MAP) PUBLISHED BY THE UNITED STATES DEPARTMENT OF THE INTERIOR, GEOLOGICAL SURVEY. SAID ELEVATION IS MARKED AS BEING 8535 FEET.

BASIS OF BEARINGS

BASIS OF BEARINGS IS A G.P.S. OBSERVATION.

Sheet 1j of 11

1953 Brass Cap
0.4' High, "T" Post
Lot: 39.658806°
Long: 108.107661°



SCALE

CERTIFICATE

THIS IS TO CERTIFY THAT THE ABOVE PLAT WAS PREPARED FROM FIELD NOTES OF ACTUAL SURVEYS MADE BY ME OR UNDER MY SUPERVISION AND THAT THE SAME ARE TRUE AND CORRECT TO THE BEST OF MY KNOWLEDGE AND BELIEF.

1953 Brass Cap
0.5' Below Ground,
E/W Fence Line
Lot: 39.658806°
Long: 108.107661°

REGISTERED LAND SURVEYOR
REGISTRATION NO. 1492
STATE OF COLORADO

REVISED: 09-10-09

UNTANH ENGINEERING & LAND SURVEYING
85 SOUTH 200 EAST - VERNAL, UTAH 84078
(435) 789-1017

SCALE 1" = 1000' DATE SURVEYED: 08-06-09 DATE DRAWN: 08-27-09

PARTY D.K. J.R. C.H. REFERENCES G.L.O. PLAT

WEATHER WARM FILE ENCAN OIL & GAS (USA) INC.

LEGEND:

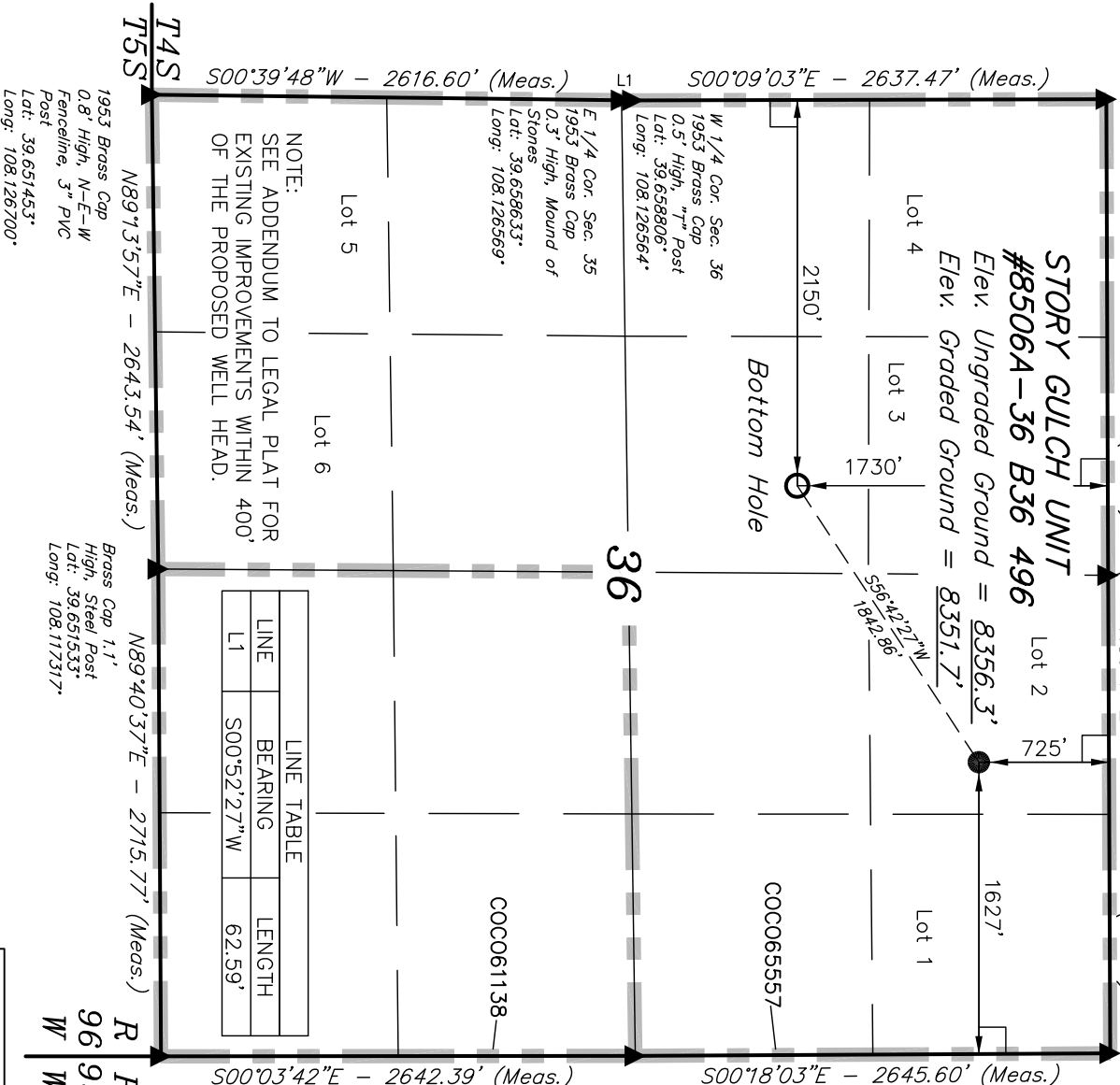
90° SYMBOL

PROPOSED WELL HEAD.

SECTION CORNERS LOCATED

NAD 83 (TARGET BOTTOM HOLE)		NAD 83 (SURFACE LOCATION)	
LATITUDE = 39°39'40.69" (39.661303)	LATITUDE = 39°39'50.64" (39.664067)		
LONGITUDE = 108°07'08.15" (108.118931)	LONGITUDE = 108°06'48.43" (108.113453)		
NAD 27 (TARGET BOTTOM HOLE)		NAD 27 (SURFACE LOCATION)	
LATITUDE = 39°39'40.78" (39.661328)	LATITUDE = 39°39'50.73" (39.664092)		
LONGITUDE = 108°07'05.86" (108.118294)	LONGITUDE = 108°06'46.14" (108.112817)		

PDOP = 2.0



NOTE:
SEE ADDENDUM TO LEGAL PLAT FOR
EXISTING IMPROVEMENTS WITHIN 400'
OF THE PROPOSED WELL HEAD.

LINE TABLE		
LINE	BEARING	LENGTH
L1	S00°52'27"W	62.59'