

Steil Surveying Services, LLC

1102 West 19th Street P.O. BOX 2073

Cheyenne, Wyoming 82009

WELL LOCATION CERTIFICATE

THIS MAP DOES NOT REPRESENT A BOUNDARY SURVEY

SECTION 10
TOWNSHIP 7 NORTH
RANGE 64 WEST

3/4" ALUMINUM CAP
(LS 7242)

N.89°31'40"E. 2642.34'

N.89°31'40"E. 2642.34'

2 1/2" ALUMINUM CAP
(LS 9644)

N.00°44'18"E. 2633.12'

S.00°39'48"W. 2631.81'

S.00°35'18"W. 2630.50'

PROPOSED
DILLARD AB10-07
ELEV. 4832'

1805'

N.89°30'03"E. 2645.80'

N.89°30'03"E. 2645.81'

N.00°44'18"E. 2633.11'

S.00°39'48"W. 2631.80'

S.00°35'18"W. 2630.50'

2 1/2" ALUMINUM CAP
(LS 32828)

S.89°28'27"W. 2649.27'

S.89°28'27"W. 2649.28'

3/4" ALUMINUM CAP
(LS 22098)



0 1000

Scale: 1" = 1000'

IN ACCORDANCE WITH A REQUEST FROM ERIK VAN DECAR - NOBLE ENERGY INC, STEIL SURVEYING SERVICES, LLC HAS DETERMINED THE LOCATION OF THE DILLARD AB10-07 WELL TO BE 2150' FNL, 1805' FEL, AS MEASURED AT NINETY (90) DEGREES FROM THE SECTION LINES, SECTION 10, TOWNSHIP 7 NORTH, RANGE 64 WEST, 6TH PRINCIPLE MERIDIAN, WELD COUNTY, COLORADO.

I HEREBY CERTIFY THAT THIS WELL LOCATION CERTIFICATE WAS PREPARED BY ME, OR UNDER MY DIRECT SUPERVISION, THAT THE FIELD WORK WAS COMPLETED ON 12/03/2009, FOR AND ON BEHALF OF NOBLE ENERGY INC, THAT IT IS NOT A LAND SURVEY PLAT OR AN IMPROVEMENT SURVEY PLAT, AND THAT IT IS NOT TO BE RELIED UPON FOR ESTABLISHMENT OF FENCE, BUILDING, OR OTHER FUTURE IMPROVEMENT LINES.

NOTES:

- 1) BASIS OF BEARINGS FOR THIS MAP ARE BASED UPON GPS OBSERVATIONS MADE ON 03/12/2008 BETWEEN MONUMENTS LOCATED AT THE SOUTHEAST SECTION CORNER AND THE NORTHEAST SECTION CORNER OF SAID SECTION AND WITH ALL BEARINGS SHOWN HEREON RELATIVE THERETO.
- 2) ELEVATIONS ARE BASED UPON NGS OPUS SOLUTION NAVD 88 DATUM.
- 3) THE NEAREST EXISTING WELL IS: NOT IN THIS QUARTER.
- 4) SEE VISIBLE IMPROVEMENTS EXHIBIT FOR ALL IMPROVEMENTS WITHIN 400'.
- 5) THE LOCATION FALLS IN PASTURE LAND.

LATITUDE & LONGITUDE (NAD 83 SURFACE HOLE):

LATITUDE: N 40.58899°

LONGITUDE: W 104.53241°

PDOP: 2.3

QUARTER-QUARTER: SW/4NE/4

NEAREST PROPERTY LINE: 480' TO THE SOUTH

LEGEND



FOUND SURVEY MONUMENT PER
MONUMENT RECORD - EXCEPTIONS NOTED.



CALCULATED DIMENSION

Completed 12/08/2009

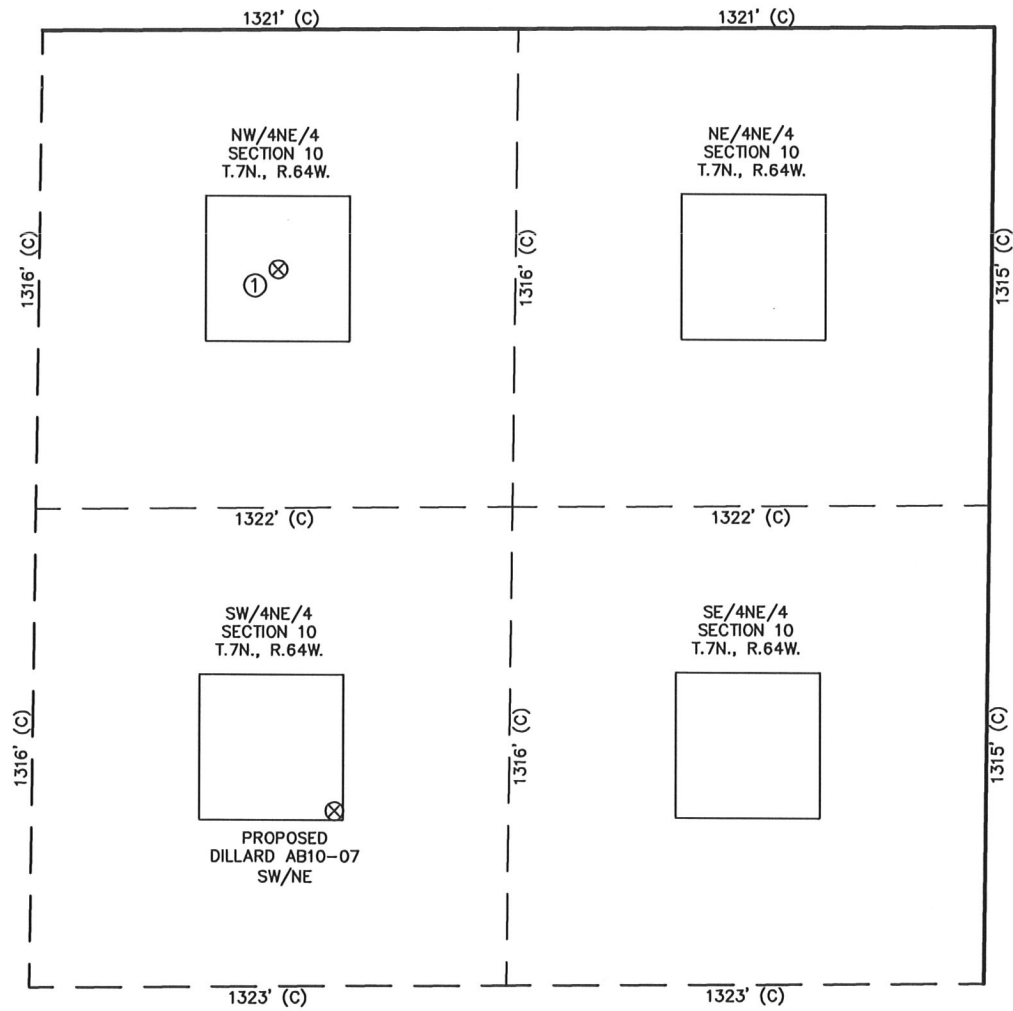
David C. Holmes
Professional Land Surveyor Registration No. 32828
State of Colorado

JOB #: 09086



SITE SKETCH – DILLARD AB10-07

SECTION 10
TOWNSHIP 7 NORTH
RANGE 64 WEST



①

GROVES-FA
31-10
NW/NE SEC. 10
RECORD LOCATION
660' FNL
1980' FEL
(PLUGGED &
ABANDONED)

NOTES:

- 1) THIS SKETCH DOES NOT REPRESENT A BOUNDARY SURVEY.
- 2) THE DATUM FOR THE LATITUDES AND LONGITUDES ON THIS SKETCH IS NAD83.

