

804 Grand Avenue  
Platteville, CO 80651

Tel: 970.785.5000  
Fax: 970.785.5099

www.nobleenergyinc.com



#4037



March 18, 2008

Mr. Randall Ferguson  
Department Of Natural Resources  
Oil & Gas Conservation Commission  
1120 Lincoln St., Suite 801  
Denver CO 80203-2136

RE: Monitoring Well Installation, & First Quarter  
Groundwater Monitoring Report  
Strong 1,P 21-2,7,8,9,10J,16,1J1,2J1,7J1  
Sec. 21 T3N R67W  
Weld County, Colorado

Dear Mr. Ferguson:

As proposed in previously submitted correspondence, four groundwater monitoring wells have been installed at the abovementioned location. The first quarterly groundwater monitoring event took place on January 18, 2008. A summary of well installation activities and groundwater monitoring analytical results can be found in the attached LT Environmental report. The second quarterly groundwater monitoring event is scheduled for April 2008.

Please contact the NEI environmental department at (970) 785-5025 if you have any questions or require additional information.

Sincerely,

A handwritten signature in black ink that reads 'Janelle Wadas'.

Janelle Wadas  
Environmental Engineer

A handwritten signature in black ink that reads 'Mikel Cox'.

Mikel Cox  
Environmental Coordinator

Attachments



March 12, 2008

Mr. Marty Faraguna  
Environmental Coordinator  
Noble Energy, Inc.  
804 Grand Avenue  
Platteville, Colorado 80651

RE: Well Installation and Sampling Report, Strong 1, P21-2, 7, 8,  
9, 10J, 2J1, 7J1 Tank Battery  
Weld County, Colorado

Dear Mr. Faraguna:

LT Environmental, Inc. (LTE) was retained by Noble Energy, Inc. (Noble) to install post remediation monitoring wells and conduct sampling activities at the Strong 1, P21-2, 7, 8, 9, 10J, 2J1, 7J1 Tank Battery (Site). The Site is located approximately 0.55 miles north of the intersection of Weld County Road (WCR) 19 and State Highway 66 (WCR 30) in Weld County, Colorado (Figure 1). This report summarizes the installation of four monitoring wells and the analytical results of the soil and groundwater sampling conducted January 11 through 18, 2008, respectively.

## **SITE SUMMARY**

The Site is located in Weld County, Colorado (Figure 1). The tank battery is surrounded on all sides by agricultural land, in addition to an irrigation ditch to the west. LTE personnel were onsite October 3 through 16, 2007 to direct excavation of petroleum hydrocarbon impacted soil and groundwater. During the excavation activities, approximately 1,335 cubic yards of impacted soil were hauled offsite for disposal. In addition to soil removal, approximately 1,392 barrels (58,000 gallons) of groundwater were evacuated from the excavation. Details of source removal remediation activities were presented in the *Excavation Summary Report* dated November 2007.

## **MONITORING WELL INSTALLATION**

LTE personnel were onsite January 11, 2008 to install four monitoring wells (MW-1 through MW-4) to determine if impacted groundwater remained at the Site. The monitoring wells were installed using a direct-push probe. The monitoring wells were advanced between 10 feet and 12 feet below ground surface (bgs). The monitoring wells were completed with one-inch diameter,



0.010-inch slotted, schedule 40, poly-vinyl chloride (PVC) casing. Boreholes were filled with 10-20 silica sand to 3 feet bgs. Bentonite chips were then placed from the sand pack to ground surface and hydrated. Three monitoring wells (MW-2 through MW-4) were installed along the north side of the excavation footprint (downgradient). The remaining monitoring well (MW-1) was installed to the southeast of the excavation, as an upgradient well. The location of the four monitoring wells relative to the tank battery and excavation is presented as Figure 2. Borehole lithologic logs are included as Attachment 1.

### **SOIL SAMPLING PROCEDURES**

One soil sample was collected from each soil boring location. The soil samples were collected from the soil interval directly above the groundwater table. The samples were preserved on ice and submitted to Origins Laboratory, Inc. (Origins) in Denver, Colorado under chain of custody for analysis of benzene, toluene, ethylbenzene, and total xylenes (BTEX) by United States Environmental Protection Agency Method 8260B. The soil samples were also analyzed for total volatile hydrocarbons-gasoline range organics (TVH-GRO) by EPA Method 8260B.

### **SOIL SAMPLING RESULTS**

There are currently no soil standards for BTEX. Soil samples are analyzed for BTEX to evaluate the potential for leaching to groundwater. Analytical results are compared to risk based screening levels (RBSLs) established by the Colorado Department of Labor and Employment-Division of Oil and Public Safety (CDLE-OPS). Laboratory analytical results for BTEX in soil are below method detection limits and CDLE-OPS RBSLs at all four monitoring well locations.

Laboratory analytical results for TVH-GRO are below method detection limits and the Colorado Oil and Gas Conservation Commission (COGCC) Sensitive Area Standard at all four monitoring well locations. Soil analytical results are summarized in Table 1. The laboratory analytical report is included as Attachment 2.

### **GROUNDWATER SAMPLING PROCEDURES**

LTE personnel were onsite January 18, 2008 to conduct groundwater sampling activities at the newly installed monitoring wells. Groundwater level measurements were collected from each monitoring well to calculate well-specific purge volumes. Depth to water from the top of casing ranged from 8.19 feet at monitoring well MW01 to 9.90 feet at monitoring well MW04.

Three casing volumes were purged from each well prior to sample collection. Samples were collected from monitoring wells MW01, MW02, MW03, and MW04. The samples were submitted under chain of custody to Origins for analysis of BTEX by EPA Method 8260B.



## GROUNDWATER ANALYTICAL RESULTS

Analytical results for BTEX in groundwater are below method detection limits and Colorado Groundwater Quality Standards (CGWQS). Groundwater analytical results are summarized in Table 2. The laboratory analytical report is included as Attachment 2.

LTE, on behalf of Noble, will continue quarterly monitoring until four consecutive quarters of groundwater analytical results in compliance with the CGWQS have been achieved. At that time, a No Further Action request will be submitted to the COGCC. The second quarterly sampling event will be conducted in April, 2008.

Please call us at 303-433-9788 if you have any questions or comments regarding this report.

Sincerely,

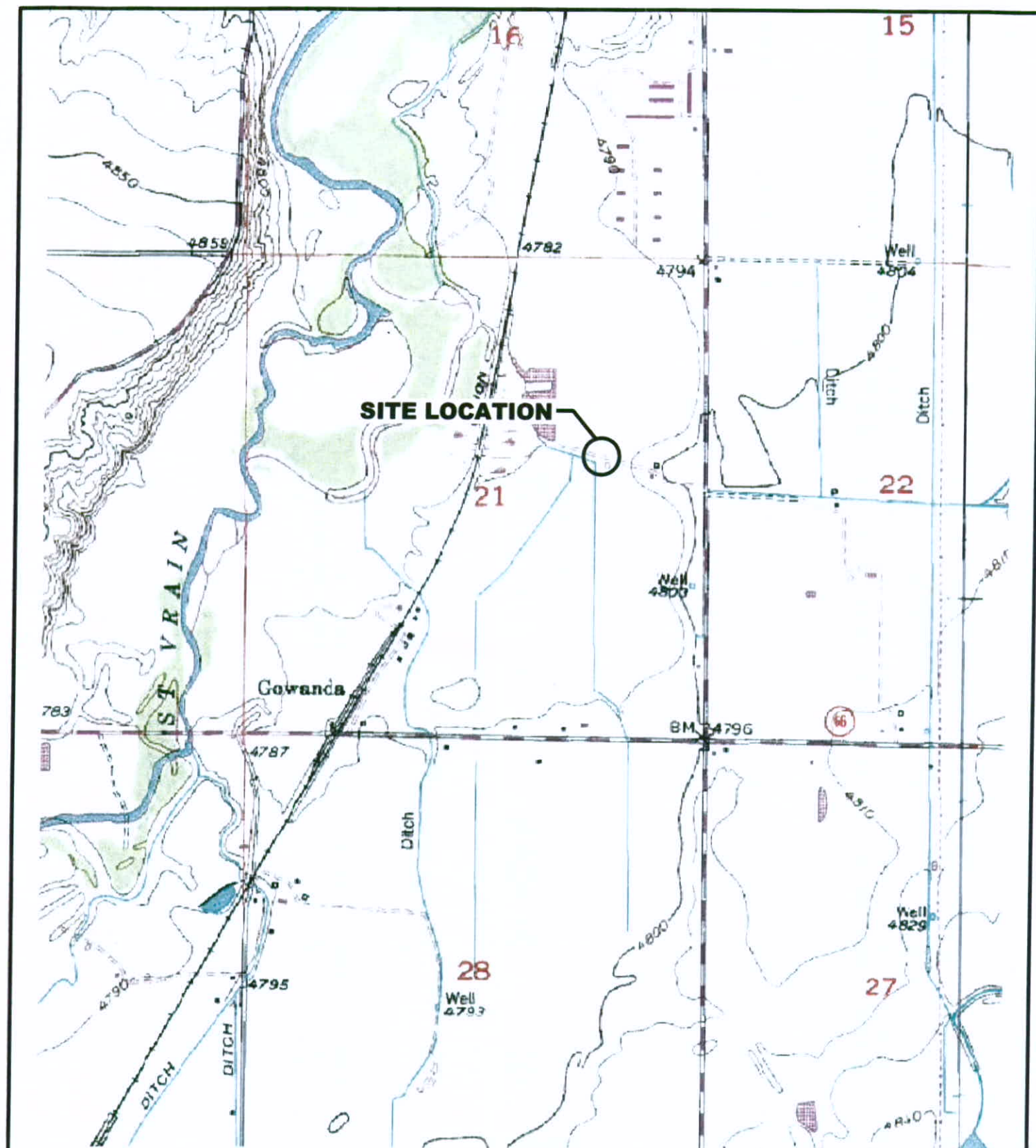
LT ENVIRONMENTAL, INC.

Brian Dodek, P.G.  
Project Manager

  
for Steve Kahn, P.E.  
Senior Engineer

Attachments

**FIGURES**



# **LEGEND**

○ SITE LOCATION



SOURCE: TOPOZONE.COM  
USGS 7.5' QUADRANGLE  
GOWANDA, CO 1978  
(NAD27)

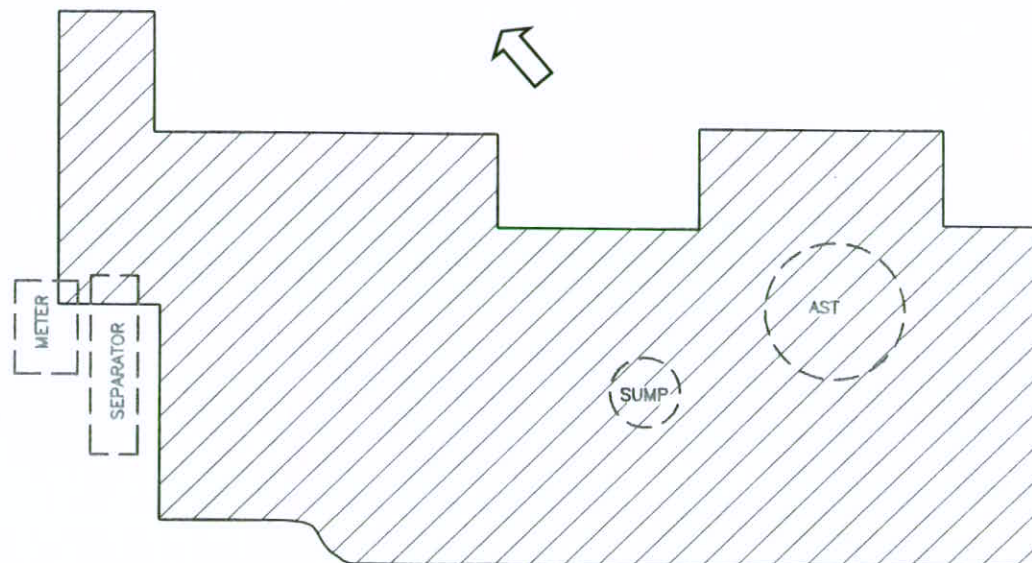
**FIGURE 1**  
**SITE LOCATION MAP**  
**STRONG 1, P21-2, 7, 8, 9, 10J, 16, 1J1, 2J1, 7J1**  
**TANK BATTERY**  
**WELD COUNTY, COLORADO**  
**NOBLE ENERGY, INC.**



MW04

MW03

MW02

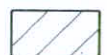


# LEGEND

MW01



MONITORING WELL LOCATION



EXCAVATION AREA



ESTIMATED GROUNDWATER FLOW DIRECTION

SOURCE:  
LTE SKETCH



FIGURE 2  
MONITORING WELL LOCATION MAP  
STRONG 1, P21-2, 7, 8, 9, 10J, 16, 1JI, 2JI, 7JI  
TANK BATTERY  
WELD COUNTY, COLORADO  
NOBLE ENERGY, INC.



NEP072202 2/08

**TABLES**

TABLE 1

**SOIL ANALYTICAL DATA**  
**STRONG 1, P21-2,7,8,9,10J,16,1JI, 2JI, 7JI TANK BATTERY**  
**WELD COUNTY, COLORADO**  
**NOBLE ENERGY, INC.**

| SAMPLE<br>ID                          | DATE      | BENZENE<br>(mg/kg) | TOLUENE<br>(mg/kg) | ETHYLBENZENE<br>(mg/kg) | XYLENES<br>(mg/kg) | TVH-GRO<br>(mg/kg) |
|---------------------------------------|-----------|--------------------|--------------------|-------------------------|--------------------|--------------------|
| MW-1 (4'-6')                          | 1/11/2008 | <0.005             | <0.005             | <0.005                  | <0.010             | <0.2               |
| MW-2 (4'-6')                          | 1/11/2008 | <0.005             | <0.005             | <0.005                  | <0.010             | <0.2               |
| MW-3 (6'-8')                          | 1/11/2008 | <0.005             | <0.005             | <0.005                  | <0.010             | <0.2               |
| MW-4 (6'-8')                          | 1/11/2008 | <0.005             | <0.005             | <0.005                  | <0.010             | <0.2               |
| <b>CDLE-OPS RBSLs</b>                 |           | <b>0.26</b>        | <b>170</b>         | <b>200</b>              | <b>1,900</b>       |                    |
| <b>COGCC Sensitive Area Standard*</b> |           |                    |                    |                         |                    | <b>&lt;1,000</b>   |

## NOTES:

Benzene, toluene, ethylbenzene, total xylenes analyzed by EPA Method 8260B

TVH-GRO - Total volatile hydrocarbons - gasoline range organics analyzed by EPA Method 8260B

mg/kg - milligrams per kilogram

< indicates result is less than the stated laboratory method detection limit

CDLE-OPS RBSLs - Colorado Department of Labor and Employment, Division of Oil and Public Safety  
Risk-Based Screening Levels

COGCC - Colorado Oil and Gas Conservation Commission

\*Applies to contaminated subsurface soil >2 feet below ground surface (bgs)  
and where the distance to groundwater is < 20 feet bgs



TABLE 2

**GROUNDWATER ANALYTICAL DATA**  
**STRONG 1, P21-2,7,8,9,10J,16,1JI, 2JI, 7JI TANK BATTERY**  
**WELD COUNTY, COLORADO**  
**NOBLE ENERGY, INC.**

| MONITORING   |           | DEPTH TO             | BENZENE    | TOLUENE      | ETHYLBENZENE | XYLENES      |
|--------------|-----------|----------------------|------------|--------------|--------------|--------------|
| WELL         | DATE      | WATER<br>(feet btoc) | (ug/L)     | (ug/L)       | (ug/L)       | (ug/L)       |
| MW-1         | 1/18/2008 | 8.19                 | <1.0       | <1.0         | <1.0         | <2.0         |
| MW-2         | 1/18/2008 | 8.50                 | <1.0       | <1.0         | <1.0         | <2.0         |
| MW-3         | 1/18/2008 | 8.95                 | <1.0       | <1.0         | 29.3         | 65.52        |
| MW-4         | 1/18/2008 | 9.90                 | <1.0       | <1.0         | <1.0         | <2.0         |
| <b>CGWQS</b> |           |                      | <b>5.0</b> | <b>1,000</b> | <b>700</b>   | <b>1,400</b> |

## NOTES:

Benzene, toluene, ethylbenzene, total xylenes analyzed by EPA Method 8260B

btoc - below top of casing

ug/L - micrograms per liter

< indicates result is less than the stated laboratory method detection limit

CGWQS - Colorado Groundwater Quality Standards



**ATTACHMENT 1**  
**BOREHOLE LITHOLOGIC LOGS**



Well Location Sketch:



MW-1



Compliance · Engineering · Remediation

LT Environmental, Inc.

4600 W. 60th Avenue

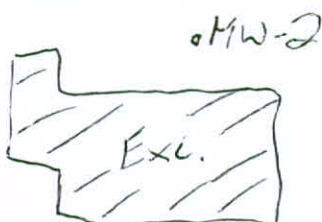
Arvada, Colorado 80003

## BORING LOG/MONITORING WELL COMPLETION DIAGRAM

|                                 |                                    |
|---------------------------------|------------------------------------|
| Boring/Well Number:<br>MW-1     | Project:<br>Strong                 |
| Date:<br>1/11/2008              | Project Number:<br>NEP0722         |
| Logged By:<br>BDD               | Drilled By:<br>High Plains (Lenny) |
| Drilling Method:<br>Direct Push | Sampling Method:<br>Continuous     |
| Gravel Pack:<br>CSSI 10x20      | Seal:<br>Bentonite Chips           |
| Casing Type:<br>Sch 40 PVC      | Grout:<br>NA                       |
| Screen Type:<br>Sch 40 PVC      | Slot:<br>0.010"                    |
| Diameter:<br>1"                 | Length:<br>7'                      |
| Hole Diameter:<br>2"            | Depth to Liquid:<br>6'             |
| Total Depth:<br>10'             | Depth to Water:<br>6'              |

| Penetration Resistance | Moisture Content | Vapor (ppm) | Staining | Sample # | Depth (ft. bgs.) | Sample Run | Recovery | Soil/Rock Type | Lithology/Remarks                               | Well Completion Diagram |
|------------------------|------------------|-------------|----------|----------|------------------|------------|----------|----------------|---|-------------------------|
|                        |                  |             |          |          | 0                |            |          |                |   |                         |
| Moist                  | 0.0              | N           |          |          | 2                | X          |          | SM             | Sand, fg, silty, dk brown, w/ organics, no odor |                         |
| Moist                  | 0.0              | N           |          |          | 4                | X          |          | SC             | Sand, clayey, fg, brown, no odor                |                         |
| Moist                  | 0.0              | N           |          | MW-1 4-6 | 6                | X          |          |                | Sand, f to cg, w/ gravel, lt brown, no odor     |                         |
| Wet                    | 0.0              | N           |          |          | 8                | X          |          |                |   |                         |
| Wet                    | 0.0              | N           |          |          | 10               | X          |          |                |   |                         |
|                        |                  |             |          |          | 12               |            |          |                |   |                         |
|                        |                  |             |          |          | 14               |            |          |                |   |                         |
|                        |                  |             |          |          | 16               |            |          |                |   |                         |
|                        |                  |             |          |          | 18               |            |          |                |   |                         |
|                        |                  |             |          |          | 20               |            |          |                |   |                         |
|                        |                  |             |          |          | 22               |            |          |                |   |                         |
|                        |                  |             |          |          | 24               |            |          |                |   |                         |
|                        |                  |             |          |          | 26               |            |          |                |   |                         |
|                        |                  |             |          |          | 28               |            |          |                |   |                         |
|                        |                  |             |          |          | 30               |            |          |                |   |                         |
|                        |                  |             |          |          | 32               |            |          |                |   |                         |
|                        |                  |             |          |          | 34               |            |          |                |   |                         |
|                        |                  |             |          |          | 36               |            |          |                |   |                         |
|                        |                  |             |          |          | 38               |            |          |                |   |                         |
|                        |                  |             |          |          | 40               |            |          |                |   |                         |

Well Location Sketch:




Compliance · Engineering · Remediation

LT Environmental, Inc.

4600 W. 60th Avenue

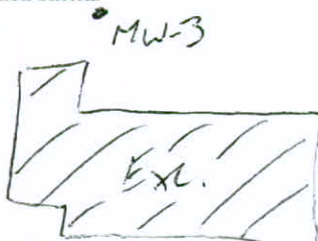
Arvada, Colorado 80003

## BORING LOG/MONITORING WELL COMPLETION DIAGRAM

|  |                      |   |   |
|--|----------------------|---|---|
| Boring/Well Number:<br><i>MW-2</i>     |                      | Project:<br><b>Strong</b>                 |   |
| Date:<br><b>1/11/2008</b>              |                      | Project Number:<br><b>NEP0722</b>         |   |
| Logged By:<br><b>BDD</b>               |                      | Drilled By:<br><b>High Plains (Lenny)</b> |   |
| Drilling Method:<br><b>Direct Push</b> |                      | Sampling Method:<br><b>Continuous</b>     |   |
| Seal:<br><b>Bentonite Chips</b>        |                      | Grout:<br><b>NA</b>                       |   |
| Diameter:<br><b>1"</b>                 | Length:<br><i>8'</i> | Hole Diameter:<br><b>2"</b>               | Depth to Liquid:<br> |
| Diameter:<br><b>1"</b>                 | Length:<br><b>5'</b> | Total Depth:<br><i>11'</i>                | Depth to Water:<br><i>~7'</i>   |

| Penetration Resistance | Moisture Content | Vapor (ppm) | Staining | Sample #     | Depth (ft. bgs.) | Sample Run | Recovery | Soil/Rock Type | Lithology/Remarks  | Well Completion Diagram |
|------------------------|------------------|-------------|----------|--------------|------------------|------------|----------|----------------|--|-------------------------|
|                        |                  |             |          |              | 0                |            |          |                |  |                         |
|                        | Moist 0.0        | N           |          |              | 2                |            |          | SM             | Sand, f.g. silty, dk brown, w/ organics, no odor           |                         |
|                        | Moist 0.0        | N           |          |              | 4                |            |          | CL             | Clay, sandy, dk brown to gray, weathered staining, no odor |                         |
|                        | Moist 0.5        | N           |          | MW-2 (4'-6') | 6                |            |          |                |  |                         |
|                        | Wet 0.0          | N           |          |              | 8                |            |          | SW             | Sand, f to cg, w/ gravel, no odor                          |                         |
|                        | Wet 0.0          | N           |          |              | 10               |            |          |                |  |                         |
|                        | Wet 0.3          | N           |          |              | 12               |            |          |                |  |                         |
|                        |                  |             |          |              | 14               |            |          |                |  |                         |
|                        |                  |             |          |              | 16               |            |          |                |  |                         |
|                        |                  |             |          |              | 18               |            |          |                |  |                         |
|                        |                  |             |          |              | 20               |            |          |                |  |                         |
|                        |                  |             |          |              | 22               |            |          |                |  |                         |
|                        |                  |             |          |              | 24               |            |          |                |  |                         |
|                        |                  |             |          |              | 26               |            |          |                |  |                         |
|                        |                  |             |          |              | 28               |            |          |                |  |                         |
|                        |                  |             |          |              | 30               |            |          |                |  |                         |
|                        |                  |             |          |              | 32               |            |          |                |  |                         |
|                        |                  |             |          |              | 34               |            |          |                |  |                         |
|                        |                  |             |          |              | 36               |            |          |                |  |                         |
|                        |                  |             |          |              | 38               |            |          |                |  |                         |
|                        |                  |             |          |              | 40               |            |          |                |  |                         |

Well Location Sketch:



Compliance · Engineering · Remediation

LT Environmental, Inc.

4600 W. 60th Avenue

Arvada, Colorado 80003

## BORING LOG/MONITORING WELL COMPLETION DIAGRAM

|  |   |                             |                                |
|--|---|-----------------------------|--------------------------------|
| Boring/Well Number:<br><b>MW-3</b>     | Project:<br><b>Strong</b>                 |                             |                                |
| Date:<br><b>1/11/2008</b>              | Project Number:<br><b>NEP0722</b>         |                             |                                |
| Logged By:<br><b>BDD</b>               | Drilled By:<br><b>High Plains (Lenny)</b> |                             |                                |
| Drilling Method:<br><b>Direct Push</b> | Sampling Method:<br><b>Continuous</b>     |                             |                                |
| Seal:<br><b>Bentonite Chips</b>        | Grout:<br><b>NA</b>                       |                             |                                |
| Diameter:<br><b>1"</b>                 | Length:<br><b>9'</b>                      | Hole Diameter:<br><b>2"</b> | Depth to Liquid:<br><b>28'</b> |
| Diameter:<br><b>1"</b>                 | Length:<br><b>5'</b>                      | Total Depth:<br><b>12'</b>  | Depth to Water:<br><b>28'</b>  |

| Penetration Resistance | Moisture Content | Vapor (ppm) | Staining | Sample # | Depth (ft. bgs.) | Sample Run | Recovery | Soil/Rock Type | Lithology/Remarks   | Well Completion Diagram |
|------------------------|------------------|-------------|----------|----------|------------------|------------|----------|----------------|---|-------------------------|
|                        |                  |             |          |          | 0                |            |          |                |   |                         |
| Moist                  | 0.0              | N           |          |          | 2                |            |          | CL             | Clay, sandy, dk brown, w/ organics, no odor                         |                         |
| Moist                  | 0.1              | N           |          |          | 4                |            |          |                |   |                         |
| Moist                  | 0.1              | N           |          |          | 6                |            |          | SC             | Sand, fg, clayey, lt brown, no odor                                 |                         |
| Moist                  | 1.7              | N           |          |          | 8                |            |          | SC             | Sand, fg, clayey, black stained, no odor                            |                         |
| Wet                    | 23.3             | Y           |          |          | 10               |            |          |                |   |                         |
| Wet                    | 18.3             | Y           |          |          | 12               |            |          | 3W             | Sand, fg to gg, w/ gravel, black stained, mod. odor, clean at 11'6" |                         |
|                        | 42.6             | Y           |          |          | 14               |            |          |                |   |                         |
|                        |                  |             |          |          | 16               |            |          |                |   |                         |
|                        |                  |             |          |          | 18               |            |          |                |   |                         |
|                        |                  |             |          |          | 20               |            |          |                |   |                         |
|                        |                  |             |          |          | 22               |            |          |                |   |                         |
|                        |                  |             |          |          | 24               |            |          |                |   |                         |
|                        |                  |             |          |          | 26               |            |          |                |   |                         |
|                        |                  |             |          |          | 28               |            |          |                |   |                         |
|                        |                  |             |          |          | 30               |            |          |                |   |                         |
|                        |                  |             |          |          | 32               |            |          |                |   |                         |
|                        |                  |             |          |          | 34               |            |          |                |   |                         |
|                        |                  |             |          |          | 36               |            |          |                |   |                         |
|                        |                  |             |          |          | 38               |            |          |                |   |                         |
|                        |                  |             |          |          | 40               |            |          |                |   |                         |

Well Location Sketch:

MW-4



Compliance · Engineering · Remediation

LT Environmental, Inc.

4600 W. 60th Avenue

Arvada, Colorado 80003

## BORING LOG/MONITORING WELL COMPLETION DIAGRAM

|                                 |                                    |                      |                        |
|---------------------------------|------------------------------------|----------------------|------------------------|
| Boring/Well Number:<br>MW-4     | Project:<br>Strong                 |                      |                        |
| Date:<br>1/11/2008              | Project Number:<br>NEP0722         |                      |                        |
| Logged By:<br>BDD               | Drilled By:<br>High Plains (Lenny) |                      |                        |
| Drilling Method:<br>Direct Push | Sampling Method:<br>Continuous     |                      |                        |
| Seal:<br>Bentonite Chips        | Grout:<br>NA                       |                      |                        |
| Diameter:<br>1"                 | Length:<br>8'                      | Hole Diameter:<br>2" | Depth to Liquid:<br>—  |
| Diameter:<br>1"                 | Length:<br>5'                      | Total Depth:<br>11'  | Depth to Water:<br>~8' |

| Penetration Resistance | Moisture Content | Vapor (ppm) | Staining | Sample # | Depth (ft. bgs.) | Sample Run | Recovery | Soil/Rock Type | Lithology/Remarks  | Well Completion Diagram |
|------------------------|------------------|-------------|----------|----------|------------------|------------|----------|----------------|--|-------------------------|
|                        |                  |             |          |          | 0                |            |          |                |  |                         |
|                        | Moist            | 0.0         | N        |          | 2                |            |          | SM             | Sand, silty, f to mg, w/organics, dk brown, no odor            |                         |
|                        | Moist            | 0.0         | N        |          | 4                |            |          | SC             | Sand, gy, clayey, lt brown to gray, no odor                    |                         |
|                        | Moist            | 0.2         | N        |          | 6                |            |          |                |  |                         |
|                        | Moist            | 5.9         | -Y-      |          | 8                |            |          | SW             | Sand, f to gy, w/ gravel, black stained, mud odor from 10'-11' |                         |
|                        | Wet              | 77.7        | Y        |          | 10               |            |          |                |  |                         |
|                        | Wet              | 1040        | Y        |          | 12               |            |          |                |  |                         |
|                        |                  | 6.9         | -N-      |          | 12               |            |          |                |  |                         |
|                        |                  |             |          |          | 14               |            |          |                | TD - 12'   |                         |
|                        |                  |             |          |          | 16               |            |          |                | Set screen - 11'   |                         |
|                        |                  |             |          |          | 18               |            |          |                |  |                         |
|                        |                  |             |          |          | 20               |            |          |                |  |                         |
|                        |                  |             |          |          | 22               |            |          |                |  |                         |
|                        |                  |             |          |          | 24               |            |          |                |  |                         |
|                        |                  |             |          |          | 26               |            |          |                |  |                         |
|                        |                  |             |          |          | 28               |            |          |                |  |                         |
|                        |                  |             |          |          | 30               |            |          |                |  |                         |
|                        |                  |             |          |          | 32               |            |          |                |  |                         |
|                        |                  |             |          |          | 34               |            |          |                |  |                         |
|                        |                  |             |          |          | 36               |            |          |                |  |                         |
|                        |                  |             |          |          | 38               |            |          |                |  |                         |
|                        |                  |             |          |          | 40               |            |          |                |  |                         |

**ATTACHMENT 2**  
**ANALYTICAL LABORATORY REPORTS**





4640 Pecos Street | Unit C | Denver, Colorado 80211  
303.433.1322 Phone 303.265.9645 Fax

---

January 23, 2008

---

LT Environmental, Inc.  
4600 West 60th Avenue  
Arvada CO 80003

Brian Dodek  
Project Number: NEP0722  
Project: Strong Tank Battery

---

Attached are the analytical results for Strong Tank Battery received by Origins Laboratory, Inc. 1/14/2008 8:00:00AM. Please let us know if you have any questions, or if we can help with anything at all.

Laboratory Manager  
Noelle E Doyle

The analytical results in the following report were analyzed under the guidelines of EPA Methods specified in SW-846. The analytical results apply specifically to the samples and analyses specified per the attached Chain of Custody. This laboratory report is intended solely for the above addressee and it is only to be used and or reproduced in its entirety.

4640 Pecos Street | Unit C  
Denver, Colorado 80211  
303.433.1322 | Laboratory  
303.265.9645 | Fax



LT Environmental, Inc.  
4600 West 60th Avenue  
Arvada CO 80003

Brian Dodek  
Project Number: NEP0722  
Project: Strong Tank Battery

### CROSS REFERENCE REPORT

| Laboratory ID | Sample ID  | Matrix | Sampled              | Date Received    |
|---------------|------------|--------|----------------------|------------------|
| MW-1 @ 4'-6'  | X801030-01 | Soil   | 1/11/2008 9:40:00AM  | 01/14/2008 08:00 |
| MW-2 @ 4'-6'  | X801030-02 | Soil   | 1/11/2008 10:15:00AM | 01/14/2008 08:00 |
| MW-3 @ 6'-8'  | X801030-03 | Soil   | 1/11/2008 11:00:00AM | 01/14/2008 08:00 |
| MW-4 @ 6'-8'  | X801030-04 | Soil   | 1/11/2008 11:45:00AM | 01/14/2008 08:00 |

Origins Laboratory, Inc.

Noelle E Doyle, Laboratory Manager

*The results in this report apply to the samples analyzed in accordance with the chain of custody document. This analytical report must be reproduced in its entirety.*

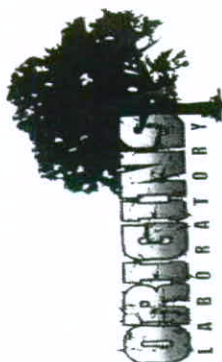
4640 Pecos Street | Unit C  
Denver, Colorado 80211  
303.433.1322 | Laboratory  
303.265.9645 | Fax



LT Environmental, Inc.  
4600 West 60th Avenue  
Arvada CO 80003

Brian Dodek  
Project Number: NEP0722  
Project: Strong Tank Battery

page 1 of 1  
X801030



originslaboratory.com

Project Manager: Brian Dodek  
Project Name: Strong Tank Battery  
Project Number: NEP0722  
Samples Collected by: BDD

Client: LT Environmental  
Address: 4600 W 60th Ave

On file

Telephone Number  
E-Mail Address

| Sample ID - Description | Date Sampled | Time Sampled | Number of Containers |     | Preservative     |       | Matrix      |      | Analysis               |       |
|-------------------------|--------------|--------------|----------------------|-----|------------------|-------|-------------|------|------------------------|-------|
|                         |              |              | Unpreserved          | HCl | HNO <sub>3</sub> | Other | Groundwater | Soil | Air - Summa Canister # | Other |
| MW-1 (4-6')             | 1-11-08      | 9:40         | 1                    |     |                  |       |             |      |                        |       |
| MW-2 (4-6')             |              | 10:15        | 1                    |     |                  |       |             |      |                        |       |
| MW-3 (6-8')             |              | 11:00        | 1                    |     |                  |       |             |      |                        |       |
| MW-4 (6-8')             |              | 11:45        | 1                    |     |                  |       |             |      |                        |       |

Relinquished by: Brian Dodek  
Date: 1-13-08  
Time: 8:00  
Relinquished by: [Signature]  
Date: 1-14-08  
Time: 8:00  
Temperature Upon Receipt: 72°F  
Time Around Time: 24-hr  
Same Day: 48-hr  
Standard: 72-hr

4640 North Pecos Street Unit C Denver, Colorado 80211 Laboratory - 303.433.1322 Fax - 303.265.9645

Origins Laboratory, Inc.

Noelle E Doyle

The results in this report apply to the samples analyzed in accordance with the chain of custody document. This analytical report must be reproduced in its entirety.

Noelle E Doyle, Laboratory Manager

4640 Pecos Street | Unit C  
Denver, Colorado 80211  
303.433.1322 | Laboratory  
303.265.9645 | Fax



LT Environmental, Inc.  
4600 West 60th Avenue  
Arvada CO 80003

Brian Dodek  
Project Number: NEP0722  
Project: Strong Tank Battery

MW-1 @ 4'-6'  
X801030-01 (Soil)

| Analyte | Reporting |       |       |          |       |          |          |       |
|---------|-----------|-------|-------|----------|-------|----------|----------|-------|
|         | Result    | Limit | Units | Dilution | Batch | Prepared | Analyzed | Notes |

Origins Laboratory, Inc.

GBTEX by EPA 8260B

|                             |    |     |       |   |         |            |            |  |
|-----------------------------|----|-----|-------|---|---------|------------|------------|--|
| Gasoline Range Hydrocarbons | ND | 200 | ug/kg | 1 | 8A16002 | 01/16/2008 | 01/17/2008 |  |
| Benzene                     | ND | 5.0 | "     | " | "       | "          | "          |  |
| Toluene                     | ND | 5.0 | "     | " | "       | "          | "          |  |
| Ethyl Benzene               | ND | 5.0 | "     | " | "       | "          | "          |  |
| m,p-Xylene                  | ND | 10  | "     | " | "       | "          | "          |  |
| o-Xylene                    | ND | 5.0 | "     | " | "       | "          | "          |  |

|                                  |        |        |  |  |   |   |   |  |
|----------------------------------|--------|--------|--|--|---|---|---|--|
| Surrogate: 1,2-Dichloroethane-d4 | 99.8 % | 65-135 |  |  | " | " | " |  |
| Surrogate: Toluene-d8            | 96.1 % | 65-135 |  |  | " | " | " |  |
| Surrogate: 4-Bromofluorobenzene  | 101 %  | 65-135 |  |  | " | " | " |  |

Origins Laboratory, Inc.

Noelle E Doyle, Laboratory Manager

*The results in this report apply to the samples analyzed in accordance with the chain of custody document. This analytical report must be reproduced in its entirety.*

4640 Pecos Street | Unit C  
Denver, Colorado 80211  
303.433.1322 | Laboratory  
303.265.9645 | Fax



LT Environmental, Inc.  
4600 West 60th Avenue  
Arvada CO 80003

Brian Dodek  
Project Number: NEP0722  
Project: Strong Tank Battery

MW-2 @ 4'-6'  
X801030-02 (Soil)

| Analyte | Result | Reporting |  | Units | Dilution | Batch | Prepared | Analyzed | Notes |
|---------|--------|-----------|--|-------|----------|-------|----------|----------|-------|
|         |        | Limit     |  |       |          |       |          |          |       |

Origins Laboratory, Inc.

GBTEX by EPA 8260B

|                             |    |     |       |   |         |            |            |
|-----------------------------|----|-----|-------|---|---------|------------|------------|
| Gasoline Range Hydrocarbons | ND | 200 | ug/kg | 1 | 8A16002 | 01/16/2008 | 01/17/2008 |
| Benzene                     | ND | 5.0 | "     | " | "       | "          | "          |
| Toluene                     | ND | 5.0 | "     | " | "       | "          | "          |
| Ethyl Benzene               | ND | 5.0 | "     | " | "       | "          | "          |
| m,p-Xylene                  | ND | 10  | "     | " | "       | "          | "          |
| o-Xylene                    | ND | 5.0 | "     | " | "       | "          | "          |

|                                  |        |        |   |   |   |
|----------------------------------|--------|--------|---|---|---|
| Surrogate: 1,2-Dichloroethane-d4 | 94.6 % | 65-135 | " | " | " |
| Surrogate: Toluene-d8            | 97.4 % | 65-135 | " | " | " |
| Surrogate: 4-Bromofluorobenzene  | 98.9 % | 65-135 | " | " | " |

Origins Laboratory, Inc.

The results in this report apply to the samples analyzed in accordance with the chain of custody document. This analytical report must be reproduced in its entirety.

Noelle E Doyle, Laboratory Manager

4640 Pecos Street | Unit C  
Denver, Colorado 80211  
303.433.1322 | Laboratory  
303.265.9645 | Fax



LT Environmental, Inc.  
4600 West 60th Avenue  
Arvada CO 80003

Brian Dodek  
Project Number: NEP0722  
Project: Strong Tank Battery

MW-3 @ 6'-8'  
X801030-03 (Soil)

| Analyte | Result | Reporting |  | Units | Dilution | Batch | Prepared | Analyzed | Notes |
|---------|--------|-----------|--|-------|----------|-------|----------|----------|-------|
|         |        | Limit     |  |       |          |       |          |          |       |

Origins Laboratory, Inc.

GBTEX by EPA 8260B

|                             |    |     |       |   |         |            |            |
|-----------------------------|----|-----|-------|---|---------|------------|------------|
| Gasoline Range Hydrocarbons | ND | 200 | ug/kg | 1 | 8A16002 | 01/16/2008 | 01/17/2008 |
| Benzene                     | ND | 5.0 | "     | " | "       | "          | "          |
| Toluene                     | ND | 5.0 | "     | " | "       | "          | "          |
| Ethyl Benzene               | ND | 5.0 | "     | " | "       | "          | "          |
| m,p-Xylene                  | ND | 10  | "     | " | "       | "          | "          |
| o-Xylene                    | ND | 5.0 | "     | " | "       | "          | "          |

|                                  |        |        |   |   |   |
|----------------------------------|--------|--------|---|---|---|
| Surrogate: 1,2-Dichloroethane-d4 | 99.5 % | 65-135 | " | " | " |
| Surrogate: Toluene-d8            | 93.3 % | 65-135 | " | " | " |
| Surrogate: 4-Bromofluorobenzene  | 102 %  | 65-135 | " | " | " |

Origins Laboratory, Inc.

Noelle E Doyle, Laboratory Manager

*The results in this report apply to the samples analyzed in accordance with the chain of custody document. This analytical report must be reproduced in its entirety.*

4640 Pecos Street | Unit C  
Denver, Colorado 80211  
303.433.1322 | Laboratory  
303.265.9645 | Fax



LT Environmental, Inc.  
4600 West 60th Avenue  
Arvada CO 80003

Brian Dodek  
Project Number: NEP0722  
Project: Strong Tank Battery

MW-4 @ 6'-8'  
X801030-04 (Soil)

| Analyte | Reporting |       | Units | Dilution | Batch | Prepared | Analyzed | Notes |
|---------|-----------|-------|-------|----------|-------|----------|----------|-------|
|         | Result    | Limit |       |          |       |          |          |       |

Origins Laboratory, Inc.

GBTEX by EPA 8260B

|                             |    |     |       |   |         |            |            |  |
|-----------------------------|----|-----|-------|---|---------|------------|------------|--|
| Gasoline Range Hydrocarbons | ND | 200 | ug/kg | 1 | 8A16002 | 01/16/2008 | 01/17/2008 |  |
| Benzene                     | ND | 5.0 | "     | " | "       | "          | "          |  |
| Toluene                     | ND | 5.0 | "     | " | "       | "          | "          |  |
| Ethyl Benzene               | ND | 5.0 | "     | " | "       | "          | "          |  |
| m,p-Xylene                  | ND | 10  | "     | " | "       | "          | "          |  |
| o-Xylene                    | ND | 5.0 | "     | " | "       | "          | "          |  |

|                                  |        |        |  |  |   |   |   |  |
|----------------------------------|--------|--------|--|--|---|---|---|--|
| Surrogate: 1,2-Dichloroethane-d4 | 99.5 % | 65-135 |  |  | " | " | " |  |
| Surrogate: Toluene-d8            | 97.3 % | 65-135 |  |  | " | " | " |  |
| Surrogate: 4-Bromofluorobenzene  | 110 %  | 65-135 |  |  | " | " | " |  |

Origins Laboratory, Inc.

Noelle E Doyle, Laboratory Manager

*The results in this report apply to the samples analyzed in accordance with the chain of custody document. This analytical report must be reproduced in its entirety.*

4640 Pecos Street | Unit C  
Denver, Colorado 80211  
303.433.1322 | Laboratory  
303.265.9645 | Fax



LT Environmental, Inc.  
4600 West 60th Avenue  
Arvada CO 80003

Brian Dodek  
Project Number: NEP0722  
Project: Strong Tank Battery

**Volatile Organic Compounds by EPA Method 8260B – Quality Control**  
**Origins Laboratory, Inc.**

| Analyte | Result | Reporting Limit | Units | Spike Level | Source Result | %REC | %REC Limits | RPD | RPD Limit | Notes |
|---------|--------|-----------------|-------|-------------|---------------|------|-------------|-----|-----------|-------|
|---------|--------|-----------------|-------|-------------|---------------|------|-------------|-----|-----------|-------|

**Batch 8A16002 – EPA 5030B**

**Blank (8A16002-BLK1)**

Prepared: 01/16/2008 Analyzed: 01/17/2008

|                                  |      |     |       |      |  |      |        |  |  |  |
|----------------------------------|------|-----|-------|------|--|------|--------|--|--|--|
| Gasoline Range Hydrocarbons      | ND   | 200 | ug/kg |      |  |      |        |  |  |  |
| Benzene                          | ND   | 5.0 | "     |      |  |      |        |  |  |  |
| Toluene                          | ND   | 5.0 | "     |      |  |      |        |  |  |  |
| Ethyl Benzene                    | ND   | 5.0 | "     |      |  |      |        |  |  |  |
| m,p-Xylene                       | ND   | 10  | "     |      |  |      |        |  |  |  |
| o-Xylene                         | ND   | 5.0 | "     |      |  |      |        |  |  |  |
| Surrogate: 1,2-Dichloroethane-d4 | 59.2 |     | ug/L  | 62.5 |  | 94.8 | 65-135 |  |  |  |
| Surrogate: Toluene-d8            | 60.3 |     | "     | 62.5 |  | 96.4 | 65-135 |  |  |  |
| Surrogate: 4-Bromofluorobenzene  | 64.6 |     | "     | 62.5 |  | 103  | 65-135 |  |  |  |

**LCS (8A16002-BS1)**

Prepared: 01/16/2008 Analyzed: 01/17/2008

|                                  |      |     |       |      |  |      |        |  |  |  |
|----------------------------------|------|-----|-------|------|--|------|--------|--|--|--|
| Benzene                          | 170  | 5.0 | ug/kg | 200  |  | 83.9 | 0-200  |  |  |  |
| Toluene                          | 180  | 5.0 | "     | 200  |  | 89.3 | 0-200  |  |  |  |
| Surrogate: 1,2-Dichloroethane-d4 | 64.2 |     | ug/L  | 62.5 |  | 103  | 65-135 |  |  |  |
| Surrogate: Toluene-d8            | 64.3 |     | "     | 62.5 |  | 103  | 65-135 |  |  |  |
| Surrogate: 4-Bromofluorobenzene  | 59.1 |     | "     | 62.5 |  | 94.5 | 65-135 |  |  |  |

**Matrix Spike (8A16002-MS1)**

Source: X801030-01

Prepared: 01/16/2008 Analyzed: 01/17/2008

|                                  |      |     |       |      |    |      |        |  |  |  |
|----------------------------------|------|-----|-------|------|----|------|--------|--|--|--|
| Benzene                          | 170  | 5.0 | ug/kg | 200  | ND | 87.2 | 65-135 |  |  |  |
| Toluene                          | 180  | 5.0 | "     | 200  | ND | 90.2 | 65-135 |  |  |  |
| Surrogate: 1,2-Dichloroethane-d4 | 65.1 |     | ug/L  | 62.5 |    | 104  | 65-135 |  |  |  |
| Surrogate: Toluene-d8            | 57.4 |     | "     | 62.5 |    | 91.9 | 65-135 |  |  |  |
| Surrogate: 4-Bromofluorobenzene  | 57.1 |     | "     | 62.5 |    | 91.4 | 65-135 |  |  |  |

**Matrix Spike Dup (8A16002-MSD1)**

Source: X801030-01

Prepared: 01/16/2008 Analyzed: 01/17/2008

|                                  |      |     |       |      |    |      |        |      |    |  |
|----------------------------------|------|-----|-------|------|----|------|--------|------|----|--|
| Benzene                          | 150  | 5.0 | ug/kg | 200  | ND | 77.4 | 65-135 | 12.0 | 20 |  |
| Toluene                          | 160  | 5.0 | "     | 200  | ND | 78.9 | 65-135 | 13.3 | 20 |  |
| Surrogate: 1,2-Dichloroethane-d4 | 63.3 |     | ug/L  | 62.5 |    | 101  | 65-135 |      |    |  |
| Surrogate: Toluene-d8            | 58.3 |     | "     | 62.5 |    | 93.3 | 65-135 |      |    |  |
| Surrogate: 4-Bromofluorobenzene  | 60.0 |     | "     | 62.5 |    | 96.0 | 65-135 |      |    |  |

Origins Laboratory, Inc.

*The results in this report apply to the samples analyzed in accordance with the chain of custody document. This analytical report must be reproduced in its entirety.*

Noelle E Doyle, Laboratory Manager

4640 Pecos Street | Unit C  
Denver, Colorado 80211  
303.433.1322 | Laboratory  
303.265.9645 | Fax



LT Environmental, Inc.  
4600 West 60th Avenue  
Arvada CO 80003

Brian Dodek  
Project Number: NEP0722  
Project: Strong Tank Battery

### Notes and Definitions

DET Analyte DETECTED  
ND Analyte NOT DETECTED at or above the reporting limit  
NR Not Reported  
DRY Sample results reported on a dry weight basis  
RPD Relative Percent Difference

Origins Laboratory, Inc.

Noelle E Doyle, Laboratory Manager

*The results in this report apply to the samples analyzed in accordance with the chain of custody document. This analytical report must be reproduced in its entirety.*

# ORIGINS LABORATORY



4640 Pecos Street | Unit C | Denver, Colorado 80211  
303.433.1322 Phone 303.265.9645 Fax

---

January 25, 2008

---

LT Environmental, Inc.  
4600 West 60th Avenue  
Arvada CO 80003

Brian Dodek  
Project Number: NEP0722  
Project: Strong Tank Battery

---

Attached are the analytical results for Strong Tank Battery received by Origins Laboratory, Inc. 1/21/2008 1:45:00PM. Please let us know if you have any questions, or if we can help with anything at all.

A handwritten signature in black ink, appearing to read 'Noelle E Doyle'. The signature is fluid and cursive, with a large, stylized 'N' and 'D'.

Laboratory Manager  
Noelle E Doyle

The analytical results in the following report were analyzed under the guidelines of EPA Methods specified in SW-846. The analytical results apply specifically to the samples and analyses specified per the attached Chain of Custody. This laboratory report is intended solely for the above addressee and it is only to be used and or reproduced in its entirety.

4640 Pecos Street | Unit C  
Denver, Colorado 80211  
303.433.1322 | Laboratory  
303.265.9645 | Fax



LT Environmental, Inc.  
4600 West 60th Avenue  
Arvada CO 80003

Brian Dodek  
Project Number: NEP0722  
Project: Strong Tank Battery

### CROSS REFERENCE REPORT

| Laboratory ID | Sample ID  | Matrix | Sampled              | Date Received    |
|---------------|------------|--------|----------------------|------------------|
| MW-01         | X801045-01 | Water  | 1/18/2008 9:00:00AM  | 01/21/2008 13:45 |
| MW-02         | X801045-02 | Water  | 1/18/2008 9:30:00AM  | 01/21/2008 13:45 |
| MW-03         | X801045-03 | Water  | 1/18/2008 9:45:00AM  | 01/21/2008 13:45 |
| MW-04         | X801045-04 | Water  | 1/18/2008 10:05:00AM | 01/21/2008 13:45 |

Origins Laboratory, Inc.

Noelle E Doyle, Laboratory Manager

*The results in this report apply to the samples analyzed in accordance with the chain of custody document. This analytical report must be reproduced in its entirety.*

4640 Pecos Street | Unit C  
 Denver, Colorado 80211  
 303.433.1322 | Laboratory  
 303.265.9645 | Fax



LT Environmental, Inc.  
 4600 West 60th Avenue  
 Arvada CO 80003

Brian Dodek  
 Project Number: NEP0722  
 Project: Strong Tank Battery

page 1 of 1  
 X801045  


originslaboratory.com

|                        |                      |
|------------------------|----------------------|
| Client                 | Project Manager      |
| LT Environmental, Inc. | Brian Dodek          |
| Address                | Project Name         |
| 4600 W. 60th Ave.      | Strong Battery       |
| Arvada, CO 80003       | Project Number       |
|                        | NEP0722              |
| Telephone Number       | Samples Collected by |
| 303.433.9788           | Steve Siviliano      |
| E-Mail Address         |                      |
| bdodek@ltenvi.com      |                      |

| Sample ID - Description | Date Sampled | Time Sampled | Number of Containers | Preservative |     |                  |       | Matrix      |      |                        | Analysis | Sample Instructions |    |
|-------------------------|--------------|--------------|----------------------|--------------|-----|------------------|-------|-------------|------|------------------------|----------|---------------------|----|
|                         |              |              |                      | Unpreserved  | HCl | HNO <sub>3</sub> | Other | Groundwater | Soil | Air - Summa Canister # |          |                     |    |
| MW01                    | 1-18-08      | 0900         | 3                    | X            |     |                  |       |             |      |                        |          |                     | 1  |
| MW02                    |              | 0930         | 3                    | X            |     |                  |       |             |      |                        |          |                     | 2  |
| MW03                    |              | 0945         | 3                    | X            |     |                  |       |             |      |                        |          |                     | 3  |
| MW04                    |              | 1005         | 3                    | X            |     |                  |       |             |      |                        |          |                     | 4  |
|                         |              |              |                      |              |     |                  |       |             |      |                        |          |                     | 5  |
|                         |              |              |                      |              |     |                  |       |             |      |                        |          |                     | 6  |
|                         |              |              |                      |              |     |                  |       |             |      |                        |          |                     | 7  |
|                         |              |              |                      |              |     |                  |       |             |      |                        |          |                     | 8  |
|                         |              |              |                      |              |     |                  |       |             |      |                        |          |                     | 9  |
|                         |              |              |                      |              |     |                  |       |             |      |                        |          |                     | 10 |

Relinquished by: *Steve Siviliano* Date: 1-21-08 Time: 13:45  
 Relinquished by: *[Signature]* Date: 12-08 Time: 14:45  
 Turn Around Time: 24 hr  
 Standard: ☒

4640 North Pecos Street Unit C Denver, Colorado 80211 Laboratory - 303.433.1322 Fax - 303.265.9645

Origins Laboratory, Inc.

*Noelle E Doyle*

Noelle E Doyle, Laboratory Manager

The results in this report apply to the samples analyzed in accordance with the chain of custody document. This analytical report must be reproduced in its entirety.

4640 Pecos Street | Unit C  
Denver, Colorado 80211  
303.433.1322 | Laboratory  
303.265.9645 | Fax



LT Environmental, Inc.  
4600 West 60th Avenue  
Arvada CO 80003

Brian Dodek  
Project Number: NEP0722  
Project: Strong Tank Battery

MW-01

X801045-01 (Water)

| Analyte | Result | Reporting |  | Units | Dilution | Batch | Prepared | Analyzed | Notes |
|---------|--------|-----------|--|-------|----------|-------|----------|----------|-------|
|         |        | Limit     |  |       |          |       |          |          |       |

Origins Laboratory, Inc.

BTEX by EPA 8260B

|              |    |      |      |   |         |            |            |
|--------------|----|------|------|---|---------|------------|------------|
| Benzene      | ND | 1.00 | ug/L | 1 | 8A23001 | 01/23/2008 | 01/23/2008 |
| Toluene      | ND | 1.00 | "    | " | "       | "          | "          |
| Ethylbenzene | ND | 1.00 | "    | " | "       | "          | "          |
| o-Xylene     | ND | 1.00 | "    | " | "       | "          | "          |
| m,p-Xylene   | ND | 2.00 | "    | " | "       | "          | "          |

|                                  |        |        |   |   |   |
|----------------------------------|--------|--------|---|---|---|
| Surrogate: 1,2-Dichloroethane-d4 | 92.7 % | 65-135 | " | " | " |
| Surrogate: Toluene-d8            | 94.9 % | 65-135 | " | " | " |
| Surrogate: 4-Bromofluorobenzene  | 99.6 % | 65-135 | " | " | " |

Origins Laboratory, Inc.

Noelle E Doyle, Laboratory Manager

*The results in this report apply to the samples analyzed in accordance with the chain of custody document. This analytical report must be reproduced in its entirety.*

4640 Pecos Street | Unit C  
Denver, Colorado 80211  
303.433.1322 | Laboratory  
303.265.9645 | Fax



LT Environmental, Inc.  
4600 West 60th Avenue  
Arvada CO 80003

Brian Dodek  
Project Number: NEP0722  
Project: Strong Tank Battery

MW-02  
X801045-02 (Water)

| Analyte | Result | Reporting |  | Units | Dilution | Batch | Prepared | Analyzed | Notes |
|---------|--------|-----------|--|-------|----------|-------|----------|----------|-------|
|         |        | Limit     |  |       |          |       |          |          |       |

Origins Laboratory, Inc.

BTEX by EPA 8260B

|              |    |      |      |   |         |            |            |
|--------------|----|------|------|---|---------|------------|------------|
| Benzene      | ND | 1.00 | ug/L | 1 | 8A23001 | 01/23/2008 | 01/23/2008 |
| Toluene      | ND | 1.00 | "    | " | "       | "          | "          |
| Ethylbenzene | ND | 1.00 | "    | " | "       | "          | "          |
| o-Xylene     | ND | 1.00 | "    | " | "       | "          | "          |
| m,p-Xylene   | ND | 2.00 | "    | " | "       | "          | "          |

|                                  |        |        |   |   |   |
|----------------------------------|--------|--------|---|---|---|
| Surrogate: 1,2-Dichloroethane-d4 | 86.5 % | 65-135 | " | " | " |
| Surrogate: Toluene-d8            | 111 %  | 65-135 | " | " | " |
| Surrogate: 4-Bromofluorobenzene  | 106 %  | 65-135 | " | " | " |

Origins Laboratory, Inc.

Noelle E Doyle, Laboratory Manager

*The results in this report apply to the samples analyzed in accordance with the chain of custody document. This analytical report must be reproduced in its entirety.*

4640 Pecos Street | Unit C  
Denver, Colorado 80211  
303.433.1322 | Laboratory  
303.265.9645 | Fax



LT Environmental, Inc.  
4600 West 60th Avenue  
Arvada CO 80003

Brian Dodek  
Project Number: NEP0722  
Project: Strong Tank Battery

MW-03  
X801045-03 (Water)

| Analyte | Result | Reporting |  | Units | Dilution | Batch | Prepared | Analyzed | Notes |
|---------|--------|-----------|--|-------|----------|-------|----------|----------|-------|
|         |        | Limit     |  |       |          |       |          |          |       |

Origins Laboratory, Inc.

BTEX by EPA 8260B

|              |      |      |      |   |         |            |            |
|--------------|------|------|------|---|---------|------------|------------|
| Benzene      | ND   | 1.00 | ug/L | 1 | 8A23001 | 01/23/2008 | 01/23/2008 |
| Toluene      | ND   | 1.00 | "    | " | "       | "          | "          |
| Ethylbenzene | 29.3 | 1.00 | "    | " | "       | "          | "          |
| o-Xylene     | 1.02 | 1.00 | "    | " | "       | "          | "          |
| m,p-Xylene   | 64.5 | 2.00 | "    | " | "       | "          | "          |

|                                  |        |        |   |   |   |
|----------------------------------|--------|--------|---|---|---|
| Surrogate: 1,2-Dichloroethane-d4 | 90.6 % | 65-135 | " | " | " |
| Surrogate: Toluene-d8            | 107 %  | 65-135 | " | " | " |
| Surrogate: 4-Bromofluorobenzene  | 106 %  | 65-135 | " | " | " |

Origins Laboratory, Inc.

Noelle E Doyle, Laboratory Manager

*The results in this report apply to the samples analyzed in accordance with the chain of custody document. This analytical report must be reproduced in its entirety.*

4640 Pecos Street | Unit C  
Denver, Colorado 80211  
303.433.1322 | Laboratory  
303.265.9645 | Fax



LT Environmental, Inc.  
4600 West 60th Avenue  
Arvada CO 80003

Brian Dodek  
Project Number: NEP0722  
Project: Strong Tank Battery

MW-04  
X801045-04 (Water)

| Analyte | Reporting |       | Units | Dilution | Batch | Prepared | Analyzed | Notes |
|---------|-----------|-------|-------|----------|-------|----------|----------|-------|
|         | Result    | Limit |       |          |       |          |          |       |

Origins Laboratory, Inc.

BTEX by EPA 8260B

|              |    |      |      |   |         |            |            |  |
|--------------|----|------|------|---|---------|------------|------------|--|
| Benzene      | ND | 1.00 | ug/L | 1 | 8A23001 | 01/23/2008 | 01/23/2008 |  |
| Toluene      | ND | 1.00 | "    | " | "       | "          | "          |  |
| Ethylbenzene | ND | 1.00 | "    | " | "       | "          | "          |  |
| o-Xylene     | ND | 1.00 | "    | " | "       | "          | "          |  |
| m,p-Xylene   | ND | 2.00 | "    | " | "       | "          | "          |  |

|                                  |        |        |  |  |   |   |   |  |
|----------------------------------|--------|--------|--|--|---|---|---|--|
| Surrogate: 1,2-Dichloroethane-d4 | 93.4 % | 65-135 |  |  | " | " | " |  |
| Surrogate: Toluene-d8            | 110 %  | 65-135 |  |  | " | " | " |  |
| Surrogate: 4-Bromofluorobenzene  | 111 %  | 65-135 |  |  | " | " | " |  |

Origins Laboratory, Inc.

Noelle E Doyle, Laboratory Manager

*The results in this report apply to the samples analyzed in accordance with the chain of custody document. This analytical report must be reproduced in its entirety.*

4640 Pecos Street | Unit C  
Denver, Colorado 80211  
303.433.1322 | Laboratory  
303.265.9645 | Fax



LT Environmental, Inc.  
4600 West 60th Avenue  
Arvada CO 80003

Brian Dodek  
Project Number: NEP0722  
Project: Strong Tank Battery

**Volatile Organic Compounds by EPA Method 8260B – Quality Control**  
**Origins Laboratory, Inc.**

| Analyte | Result | Reporting Limit | Units | Spike Level | Source Result | %REC | %REC Limits | RPD | RPD Limit | Notes |
|---------|--------|-----------------|-------|-------------|---------------|------|-------------|-----|-----------|-------|
|---------|--------|-----------------|-------|-------------|---------------|------|-------------|-----|-----------|-------|

**Batch 8A23001 – EPA 5030B**

**Blank (8A23001-BLK1)**

Prepared: 01/23/2008 Analyzed: 01/23/2008

|                                  |      |      |      |      |  |      |        |  |  |  |
|----------------------------------|------|------|------|------|--|------|--------|--|--|--|
| Benzene                          | ND   | 1.00 | ug/L |      |  |      |        |  |  |  |
| Toluene                          | ND   | 1.00 | "    |      |  |      |        |  |  |  |
| Ethylbenzene                     | ND   | 1.00 | "    |      |  |      |        |  |  |  |
| o-Xylene                         | ND   | 1.00 | "    |      |  |      |        |  |  |  |
| m,p-Xylene                       | ND   | 2.00 | "    |      |  |      |        |  |  |  |
| Surrogate: 1,2-Dichloroethane-d4 | 59.2 |      | "    | 62.5 |  | 94.8 | 65-135 |  |  |  |
| Surrogate: Toluene-d8            | 63.6 |      | "    | 62.5 |  | 102  | 65-135 |  |  |  |
| Surrogate: 4-Bromofluorobenzene  | 68.7 |      | "    | 62.5 |  | 110  | 65-135 |  |  |  |

**LCS (8A23001-BS1)**

Prepared: 01/23/2008 Analyzed: 01/23/2008

|                                  |      |      |      |      |  |      |        |  |  |  |
|----------------------------------|------|------|------|------|--|------|--------|--|--|--|
| Benzene                          | 47.1 | 1.00 | ug/L | 50.0 |  | 94.2 | 0-200  |  |  |  |
| Toluene                          | 54.6 | 1.00 | "    | 50.0 |  | 109  | 0-200  |  |  |  |
| Surrogate: 1,2-Dichloroethane-d4 | 58.3 |      | "    | 62.5 |  | 93.2 | 65-135 |  |  |  |
| Surrogate: Toluene-d8            | 68.6 |      | "    | 62.5 |  | 110  | 65-135 |  |  |  |
| Surrogate: 4-Bromofluorobenzene  | 57.1 |      | "    | 62.5 |  | 91.3 | 65-135 |  |  |  |

**Matrix Spike (8A23001-MS1)**

Source: X801043-01

Prepared: 01/23/2008 Analyzed: 01/23/2008

|                                  |      |      |      |      |    |      |        |  |  |  |
|----------------------------------|------|------|------|------|----|------|--------|--|--|--|
| Benzene                          | 43.1 | 1.00 | ug/L | 50.0 | ND | 86.2 | 65-135 |  |  |  |
| Toluene                          | 49.9 | 1.00 | "    | 50.0 | ND | 99.7 | 65-135 |  |  |  |
| Surrogate: 1,2-Dichloroethane-d4 | 55.9 |      | "    | 62.5 |    | 89.5 | 65-135 |  |  |  |
| Surrogate: Toluene-d8            | 64.2 |      | "    | 62.5 |    | 103  | 65-135 |  |  |  |
| Surrogate: 4-Bromofluorobenzene  | 63.6 |      | "    | 62.5 |    | 102  | 65-135 |  |  |  |

**Matrix Spike Dup (8A23001-MSD1)**

Source: X801043-01

Prepared: 01/23/2008 Analyzed: 01/23/2008

|                                  |      |      |      |      |    |      |        |      |    |  |
|----------------------------------|------|------|------|------|----|------|--------|------|----|--|
| Benzene                          | 43.7 | 1.00 | ug/L | 50.0 | ND | 87.4 | 65-135 | 1.38 | 25 |  |
| Toluene                          | 49.3 | 1.00 | "    | 50.0 | ND | 98.6 | 65-135 | 1.11 | 25 |  |
| Surrogate: 1,2-Dichloroethane-d4 | 58.3 |      | "    | 62.5 |    | 93.2 | 65-135 |      |    |  |
| Surrogate: Toluene-d8            | 68.2 |      | "    | 62.5 |    | 109  | 65-135 |      |    |  |
| Surrogate: 4-Bromofluorobenzene  | 59.3 |      | "    | 62.5 |    | 94.9 | 65-135 |      |    |  |

Origins Laboratory, Inc.

*The results in this report apply to the samples analyzed in accordance with the chain of custody document. This analytical report must be reproduced in its entirety.*

Noelle E Doyle, Laboratory Manager

4640 Pecos Street | Unit C  
Denver, Colorado 80211  
303.433.1322 | Laboratory  
303.265.9645 | Fax



LT Environmental, Inc.  
4600 West 60th Avenue  
Arvada CO 80003

Brian Dodek  
Project Number: NEP0722  
Project: Strong Tank Battery

### Notes and Definitions

DET Analyte DETECTED  
ND Analyte NOT DETECTED at or above the reporting limit  
NR Not Reported  
DRY Sample results reported on a dry weight basis  
RPD Relative Percent Difference

Origins Laboratory, Inc.

Noelle E Doyle, Laboratory Manager

*The results in this report apply to the samples analyzed in accordance with the chain of custody document. This analytical report must be reproduced in its entirety.*